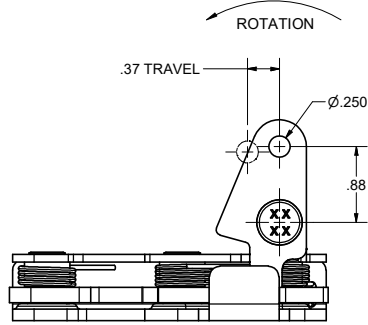
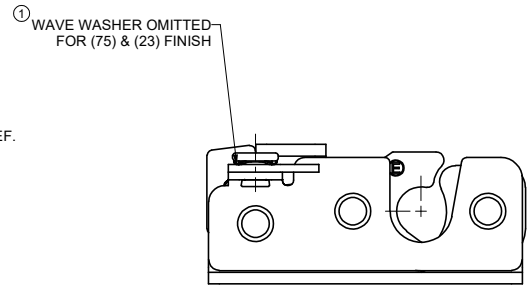
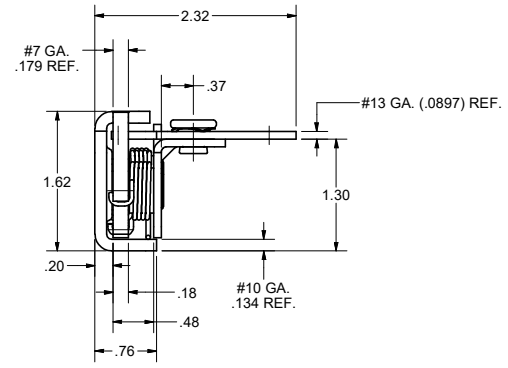
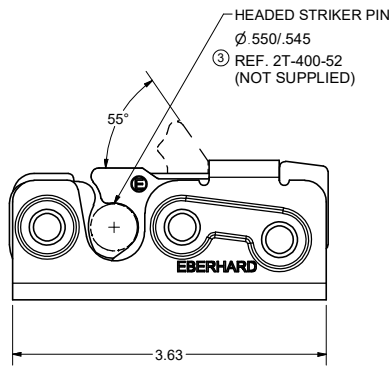
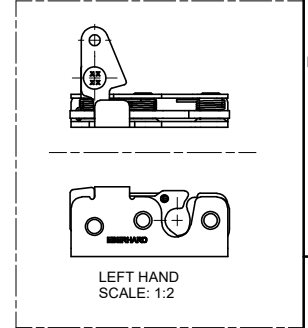
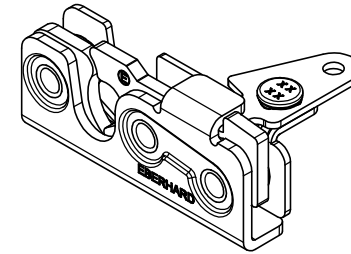


CONFIDENTIAL NOTICE: This drawing and the designs, specifications and engineering information disclosed hereon are the property of Eberhard Manufacturing Company and are not to be disseminated or reproduced without express written consent. The drawing is loaned in confidence and then only for consideration of the matter disclosed hereon. In accepting loan of this drawing, recipient agrees to keep it and the matter disclosed hereon in confidence and not to use nor permit their use in any way detrimental to Eberhard Manufacturing Company, Division of the Eastern Company, 2184 Drake Road, Cleveland, Ohio 44149-9712, © 2015 EBERHARD MFG. CO.

REV	DESCRIPTION	REVISION HISTORY			
		EN	DATE	REV BY	APVD BY
1	REVISED AND REDRAWN	EN 5193	4-15-05		
1	REVISED NOTE #3 ADDED (23) FINISH	EN 5199	5-27-05		
2	ADDED FINISH 206 STRIKER	EN 5283	12-19-08		
3	REVISED NOTE	5745	3-25-10	FLP	MR



- AVAILABLE FINISHES:
 (25) ELECTROPLATED ZINC
 (BG) BEARING GREASE WITH
 EVERLUBE INTERNAL COMPONENTS
 (75) ZINC W/ OLIVE DRAB CHROMATE
 (23) E-COAT WITH (76) EVERLUBE
 INTERNAL COMPONENTS.



- NOTES:
 1. USE Ø.312 GRADE 8 BOLTS FOR INSTALLATION TO MEET FMVSS 206 SAFETY STANDARDS
 2. RECOMMENDED TORQUE FOR TIGHTENING: 130±10 IN. LBS.
 ① 3. ORDER 400-BXL (75), (23) OR 400-BXR (75), (23) FOR 100 PIECES PER BOX

SHEET 1 OF 2
 RIGHT HAND SHOWN
 LEFT HAND OPPOSITE

EBERHARD MANUFACTURING CO. DIVISION OF THE EASTERN COMPANY CLEVELAND, OHIO 44149-9712	
ROTARY LOCK	
PART NUMBER 400-R/L	MATERIAL -----

UNLESS OTHERWISE SPECIFIED TOLERANCES ARE AS FOLLOWS:	DATE 04/2009	NAME
ANGLES: ±2	DR BY JFB	
2 PLACE DEC.: ±.03	SCALE 1:1	
3 PLACE DEC.: ±.015	CHECK BY	
ALL HOLES: ±.005		

SUPERSEDES DRAWING 400-R/L DATED 4-29-91.