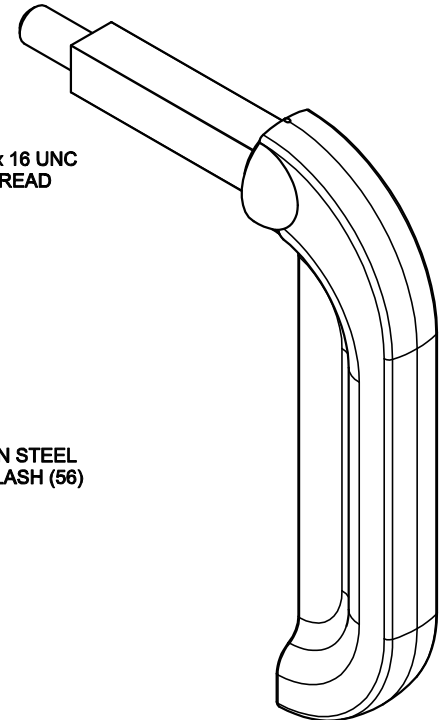
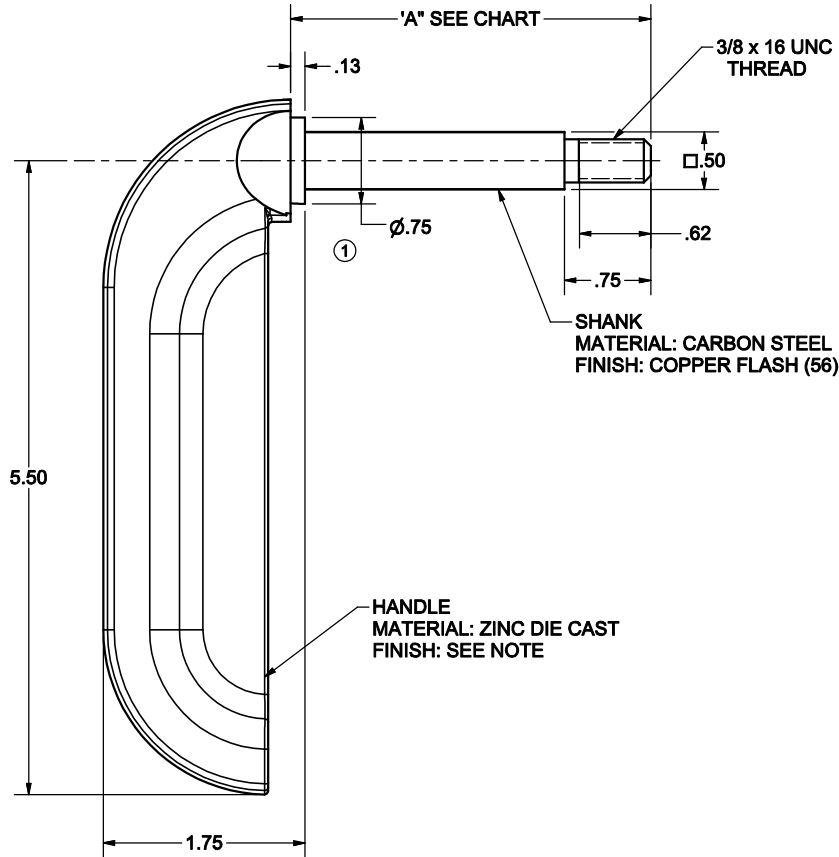
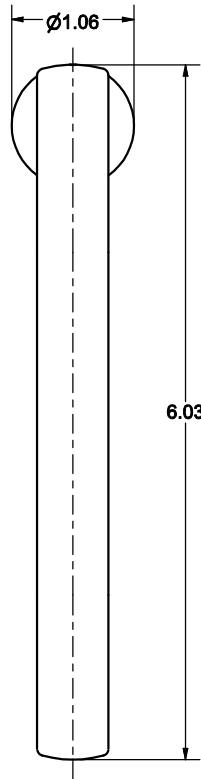


CONFIDENTIAL NOTICE: This drawing and the designs, specifications and engineering information disclosed hereon are the property of Eberhard Manufacturing Company and are not to be disseminated or reproduced without express written consent. The drawing is loaned in confidence and then only for consideration of the matter disclosed hereon. In accepting loan of this drawing, recipient agrees to keep it and the matter disclosed hereon in confidence and not to use nor permit their use in any way detrimental to Eberhard Manufacturing Company, Division of the Eastern Company, 21944 Drake Road, Cleveland, Ohio 44149-9712 © 2015 EBERHARD MFG. CO.

REVISION HISTORY					
REV	DESCRIPTION	EN	DATE	REV BY	APVD BY
	CONVERTED TO 3D	9690	4-16-14		
1	REVISED NOTE, REMOVED VIEW, REVISED VIEW	5715	8-7-15	FLP	MR

OUTSIDE EMERGENCY DOOR HANDLE LESS PIN		
PART NO.	DESCRIPTION	LENGTH "A"
4-2390-50	HANDLE, DOOR OUTSIDE SIDE EMERGENCY	3.25
7-2390-50	HANDLE, DOOR OUTSIDE SIDE EMERGENCY	4.10



NOTE:
 AVAILABLE FINISHES:
 A. EXTERIOR BRIGHT POLISH CHROME (SC4), FC (08)
 B. BLACK POWDER (POLY SEMI-GLOSS), FC (30)
 C. SCHOOL BUS YELLOW POWDER, FC (YN)
 D. WINTER WHITE PAINT, FC (WW)

SUPERSEDES DRAWING 4-2390-50 CHART SHEET 1 OF 3 DATED 7-18-05.

THIS DOCUMENT IS IN ACCORDANCE WITH ASME Y14.15-2009		DATE	4/18/2014
LINEAR MEASURE: INCH		DR BY	FLP
UNLESS OTHERWISE SPECIFIED TOLERANCES ARE AS FOLLOWS:		SCALE	FULL
ANGLES:	$\pm 2^\circ$ $\pm 2^\circ$	CHK BY	
2 PLACE DEC.:	$\pm .03$ $\pm .76$		
3 PLACE DEC.:	$\pm .015$ $\pm .38$		
ALL HOLES:	$\pm .005$ $\pm .13$		

CUSTOMER PRINT SHEET 1 OF 3	
EBERHARD MANUFACTURING CO. DIVISION OF THE EASTERN COMPANY CLEVELAND, OHIO 44149-9712	
NAME	OUTSIDE EMERGENCY DOOR HANDLE LESS PIN
MATERIAL	PART NUMBER
	4-2390-50
CHART	

C:\TEMP\ledc6ef13-97df-41e8-90ec-e9a8ace8eff5e\Prod\2\2390_9114-2390-50 CH SH1.idw