

PROJ. NO: 3728

DESTROY ALL PRINTS PREVIOUS TO

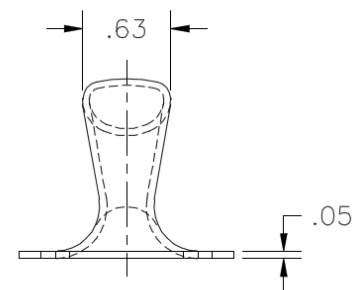
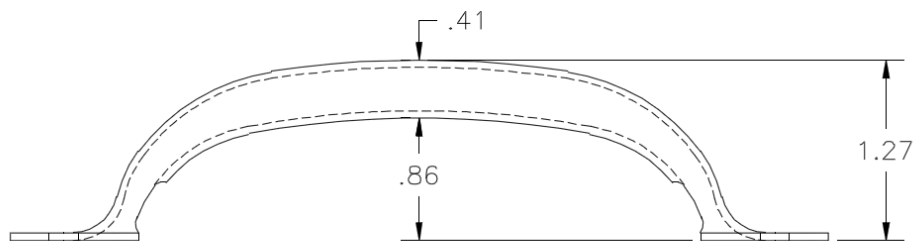
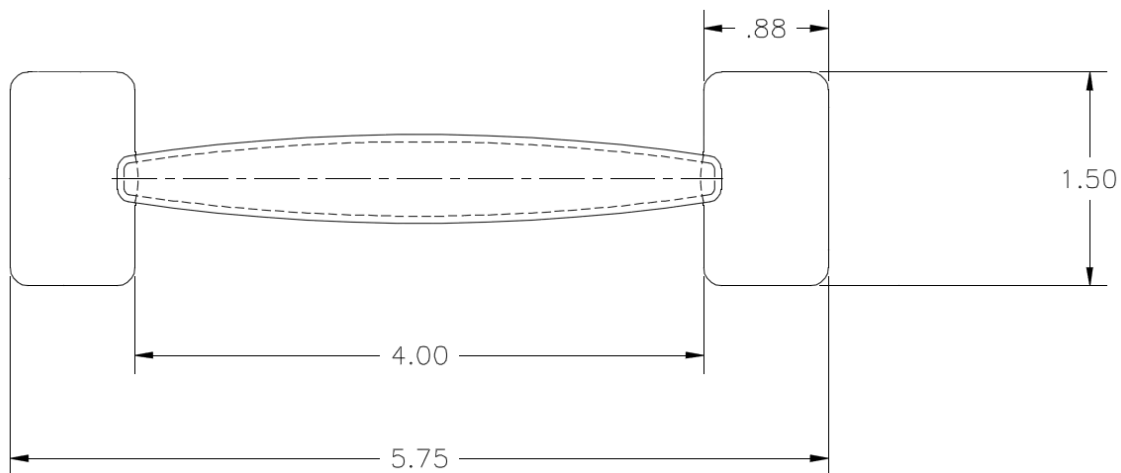
PART NO:

349F258

REV.
NO.

0

6/23/2017

**NOTES:**

1. Packaging: 100 pcs per shelf pack, 400 pcs per master carton.

THIS DRAWING IS THE EXCLUSIVE PROPERTY OF THE ILLINOIS LOCK COMPANY / CCL SECURITY PRODUCTS, AND IS SUBMITTED ONLY ON A CONFIDENTIAL BASIS. UNAUTHORIZED USE OR DISCLOSURE OF ITS CONTENTS AND REPRODUCTION IS PROHIBITED. THIS DRAWING, UNLESS OTHERWISE DIRECTED IS TO BE RETURNED TO THE ILLINOIS LOCK COMPANY / CCL SECURITY PRODUCTS.

MATERIAL: CARBON STEEL

FINISH: POLISHED STEEL

ENG:.

SCALE:

CHECKED BY: A.O.

DATE: 6/23/2017

TOLERANCES, UNLESS OTHERWISE SPECIFIED

VALUE INCHES [mm]

X. ± .030 [.762]

X.X ± .015 [.381]

X.XX ± .010 [.254]

X.XXX ± .005 [.127]

FRACTIONS: ± 1/32 ANGLES: ± 2°

Illinois Lock Company
CCL SECURITY PRODUCTS

WHEELING, IL.

(3284) S14810 PULL HANDLE

CUST. NAME:

CUST. PART NO:

SHEET: 1 OF 1