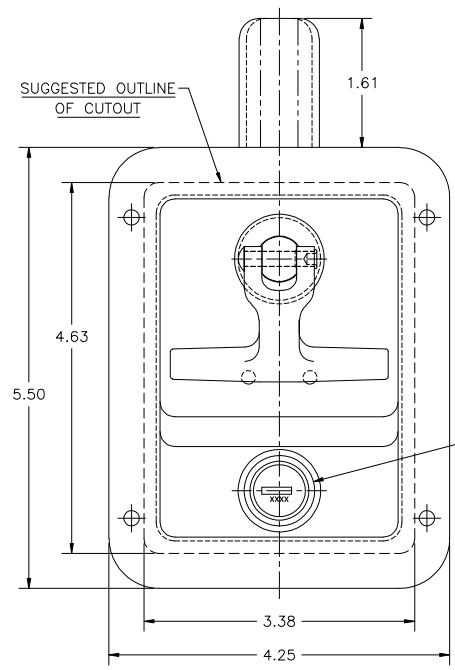
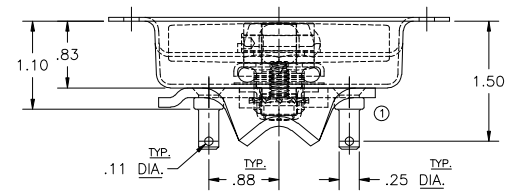


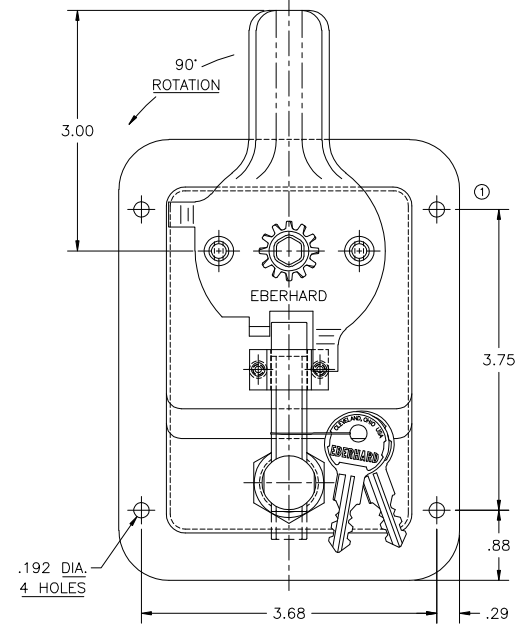
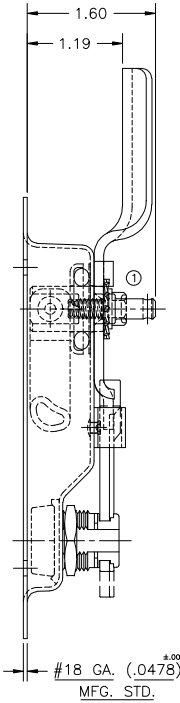
36930501

CONFIDENTIAL NOTICE: This drawing and the design, specifications and engineering information disclosed herein are the property of Eberhard Manufacturing Company and are not to be disseminated or reproduced without express written consent. The drawing is based in confidence and then only for consideration of the motor disclosed herein. In accepting use of this drawing, recipient agrees to keep it and the motor disclosed herein in confidence and not to use nor permit their use in any way detrimental to Eberhard Manufacturing Company, Division of the Eastern Company, 21944 Drake Road, Cleveland, Ohio 44149-9712 © 2003 EBERHARD MFG. CO.

NO.	CHANGE	ENG. NO.	DATE
	REVISED AND REDRAWN	EN 5099	3-21-03
1	REVISED TO DETAIL	EN 5098	5-23-03



KEY CYLINDER
W/DUST COVER,
INTERNAL O-RING &
2 DOUBLE BITTED KEYS



CUSTOMER PRINT
SHEET 1 OF 2

NOTE:
FOR MOUNTING .22 THICK RODS, ONLY SEPERATELY:
(2) 9X-101-COTTER PINS, (2) 5646-7-SPRING WASHERS,
AND (2) 1-6902-10-SPACERS. ALL PARTS TO BE
SHIPPED LOOSE, BULK PACKED.

EBERHARD MANUFACTURING CO.
DIVISION OF
THE EASTERN COMPANY
CLEVELAND, OHIO 44149-9712

UNLESS OTHERWISE SPECIFIED TOLERANCES ARE AS FOLLOWS:	ONE 3-12-03	NAME THREE POINT T-HANDLE CENTER CASE - KEY-LOCKING	MATERIAL -----	PART NUMBER 3-6903DB-50/SS50
	DRAWN BY			
ANGLES: 2 PLACE DEC.: ±.03 3 PLACE DEC.: ±.015 ALL HOLES: ±.005	SCALE FULL			
CHK BY:				

SUPERSEDES DRAWING 3-6903DB-50/SS50 SHEET 1 OF 2 DATED 5-31-96