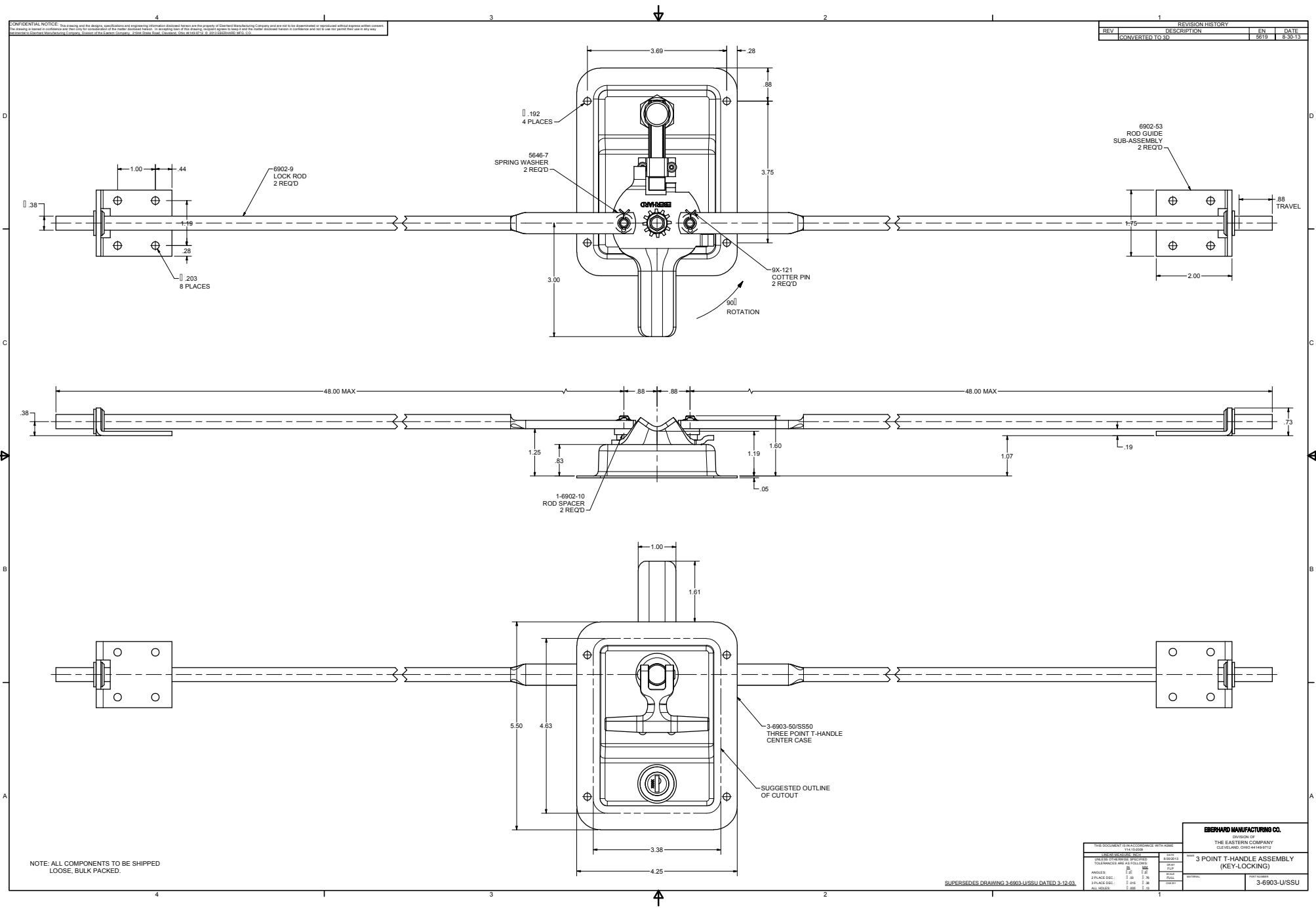


CONFIDENTIAL NOTICE: This drawing and the design identification and engineering information disclosed herein are the property of Eberhard Manufacturing Company and are not to be disseminated or reproduced without express written consent. The drawing is issued in confidence and the only authorized copy is the original. In accordance with this drawing, no other copies shall be made or the holder shall be liable to the extent of the law for any use in any way.

REVISION HISTORY			
REV	DESCRIPTION	EN	DATE
1	CONVERTED TO 3D	5615	8-30-13



NOTE: ALL COMPONENTS TO BE SHIPPED LOOSE, BULK PACKED.

THIS DOCUMENT IS TO BE CONSIDERED VOID EXCEPT WHEN USED IN CONJUNCTION WITH THE FOLLOWING:		FORM 8-1002-13
DATE OF THIS DRAWING SPECIFIED:	DATE OF THIS DRAWING SPECIFIED:	FORM 8-1002-13
TOLERANCES ARE AS FOLLOWS:	TOLERANCES ARE AS FOLLOWS:	FORM 8-1002-13
ANGLES:	ANGLES:	FORM 8-1002-13
PLACEMENT:	PLACEMENT:	FORM 8-1002-13
SPACING:	SPACING:	FORM 8-1002-13
ALL HOLES:	ALL HOLES:	FORM 8-1002-13

EBERHARD MANUFACTURING CO.
 DIVISION OF
 THE EASTERN COMPANY
 CLEVELAND, OHIO 44116-9712

3 POINT T-HANDLE ASSEMBLY (KEY-LOCKING)
 3-6903-UJSSU

SUPERSEDES DRAWING 3-6903-UJSSU DATED 3-12-03.

C:\Working_Folder\Ame\Prod\8900_43\8903_UJSSU.dwg