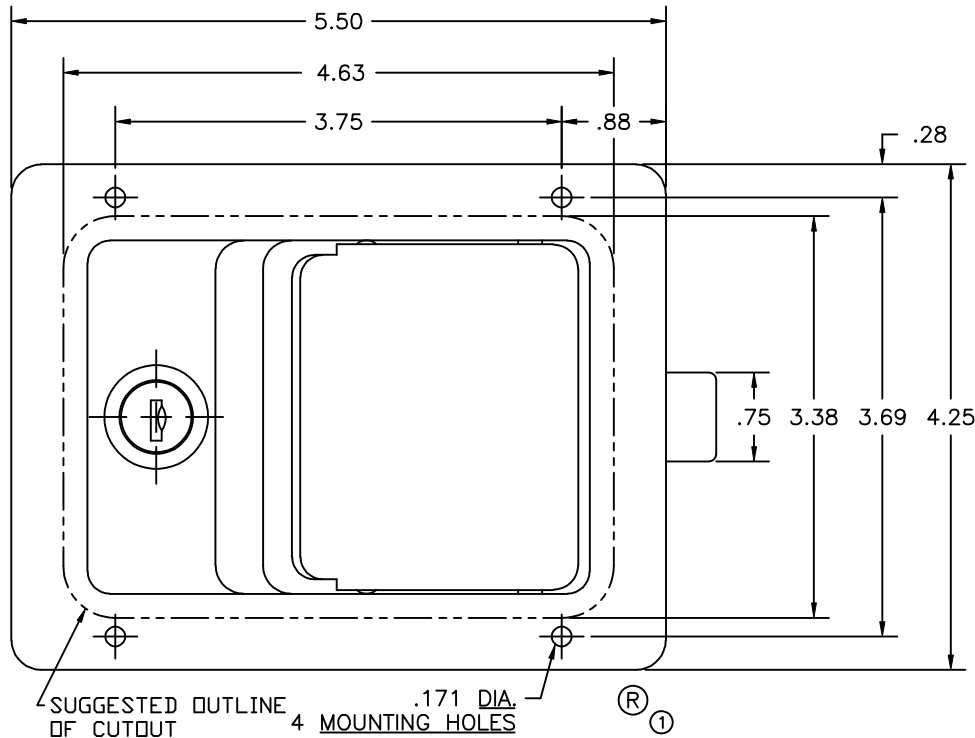


34904-SS

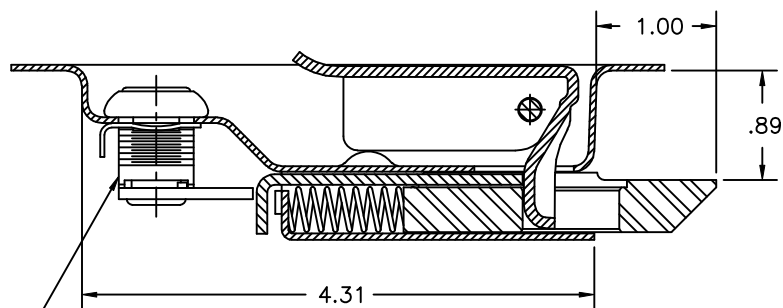
CONFIDENTIAL NOTICE: This drawing and the designs, specifications and engineering information disclosed hereon are the property of Eberhard Manufacturing Company and are not to be disseminated or reproduced without express written consent. The drawing is loaned in confidence and then only for consideration of the matter disclosed hereon. In accepting loan of this drawing, recipient agrees to keep it and the matter disclosed hereon in confidence and not to use nor permit their use in any way detrimental to Eberhard Manufacturing Company, Division of the Eastern Company, 21944 Drake Road, Cleveland, Ohio 44149-9712 © 2016 EBERHARD MFG. CO.

NO	CHANGE	ENG.NO.	DATE
	RELEASED	EN5531	12-2-11
1	ADDED NOTE, ©	EN 5779	11-18-16



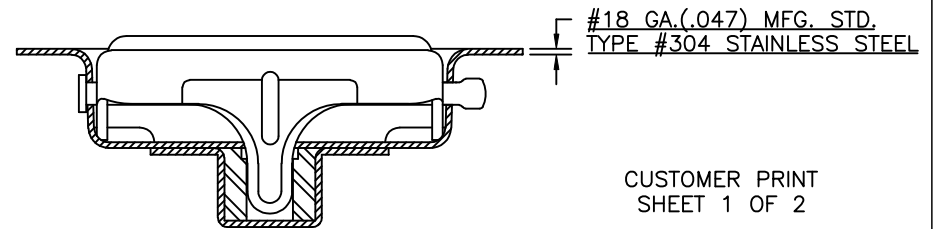
NOTE:
P#3-4904-SS-10 - ATTACHED KEY TO ASSEMBLY.
P#3-4904-SSU-10 - KEYS SHIPPED IN BULK.

FINISH: (10) BRIGHT STAINLESS STEEL



KEY CYLINDER AVAILABLE WITH KEY COMBINATIONS
501CH-550CH,LL22, 8025 & 1250

① NOTE: REGISTERED IN THE U.S. PATENT AND TRADEMARK OFFICE



EBERHARD MANUFACTURING CO.
DIVISION OF
THE EASTERN COMPANY
CLEVELAND, OHIO 44149-9712

UNLESS OTHERWISE SPECIFIED TOLERANCES ARE AS FOLLOWS:	DATE 12/2/11
ANGLES: ±2°	DR BY KAB
2 PLACE DEC.: ±.03	SCALE FULL
3 PLACE DEC.: ±.015	CHK BY
ALL HOLES: ±.005	

NAME UNIVERSAL (SLAM BOLT LOCKING) PADDLE LOCK	PART NUMBER 3-4904-SS/SSU
MATERIAL -----	