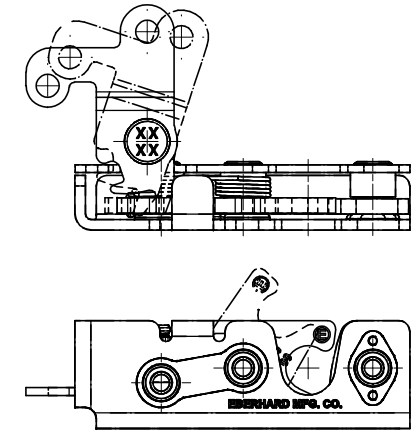
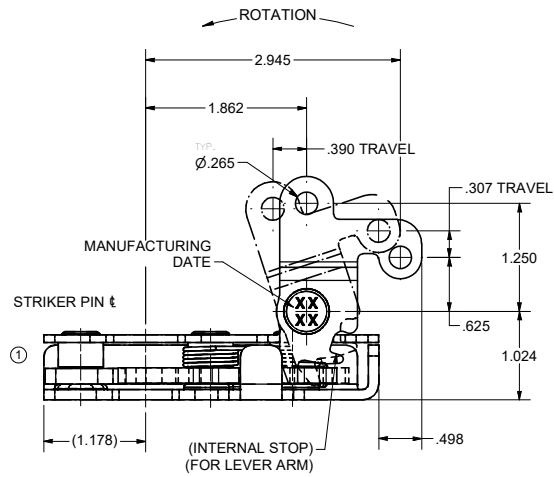
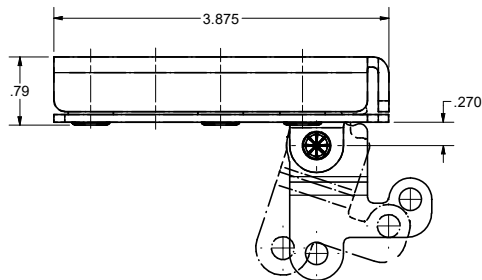
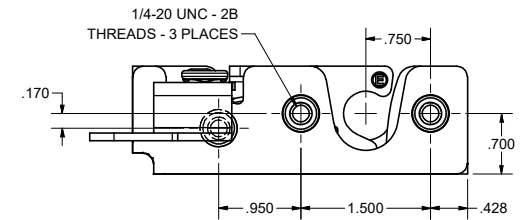
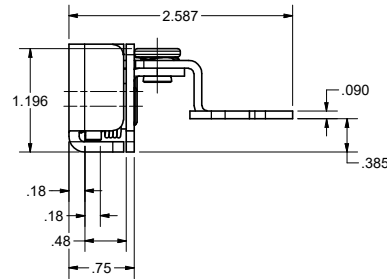
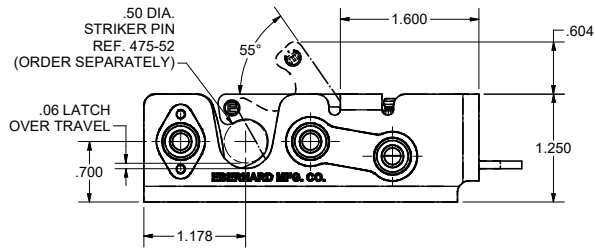


CONFIDENTIAL NOTICE: This drawing and the designs, specifications and engineering information disclosed hereon are the property of Eberhard Manufacturing Company and are not to be disseminated or reproduced without express written consent. The drawing is loaned in confidence and then only for consideration of the matter disclosed hereon. In accepting loan of this drawing, recipient agrees to keep it and the matter disclosed hereon in confidence and not to use nor permit their use in any way whatsoever by Eberhard Manufacturing Company, Division of the Eastern Company, 21844 Drake Road, Cleveland, Ohio 44149-9712, © 2012 EBERHARD MFG. CO.

REVISION HISTORY					
REV	DESCRIPTION	EN	DATE	REV BY	APVD BY
1	REVISED AND REDRAWN, CONVERTED TO 3D	EN 5583	12/14/2012		
1	REVISED TO DETAIL	5798	4-14-17	FLP	MR
2	FRONT PLATE CHANGE PER ECR 209	5940	2/14/2020	KAB	MR



2T-475-L
LEFT HAND
LOW PROFILE ROTARY LOCK ASSEMBLY WITH
THREADED SPACERS & OFFSET LEVER ARM



NOTES:

- 1) THIS ROTARY LOCK ASSEMBLY MEETS ALL REQUIREMENTS FOR FMVSS 206 SAFETY STANDARD WHEN MOUNTED WITH THREE 1/4-20 UNC-2A, GRADE 8 BOLTS.
- 2) RECOMMENDED TORQUE FOR TIGHTENING: 105 ±10 in./lbs.

SPRING RATE:

- LATCH: 1.07 lbs.*in. - UNLATCHED POSITION.
PAWL: 1.03 lbs.*in. - ACTUATED POSITION.

FINISH:

- (64) YELLOW ZINC WITH EVERLUBE
INTERNAL COMPONENTS.
(BG) BEARING GREASE WITH EVERLUBE
INTERNAL COMPONENTS.

CUSTOMER PRINT
SHEET 1 OF 2
RIGHT HAND SHOWN
LEFT HAND OPPOSITE

EBERHARD MANUFACTURING CO.
DIVISION OF
THE EASTERN COMPANY
CLEVELAND, OHIO 44149-9712

NAME: **LOW PROFILE ROTARY LOCK ASSEMBLY WITH THREADED SPACERS AND OFFSET LEVER ARM**

MATERIAL: ----- PART NUMBER: **2T-475-R/L**



THIS DOCUMENT IS IN ACCORDANCE WITH ASME Y14.5-2009		DATE 12/11/2012
LINEAR MEASURE: INCH UNLESS OTHERWISE SPECIFIED TOLERANCES ARE AS FOLLOWS:		DRY BY SAA
IN	MM	SCALE FULL
ANGLES: # 2 # 2		CHECK BY
2 PLACE DEC: # .03 # .76		
3 PLACE DEC: # .015 # .38		
ALL HOLES: # .005 # .13		