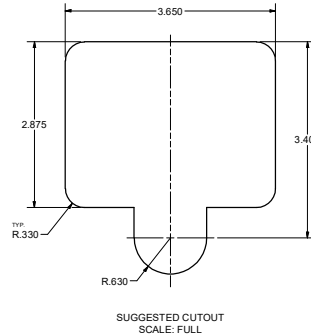
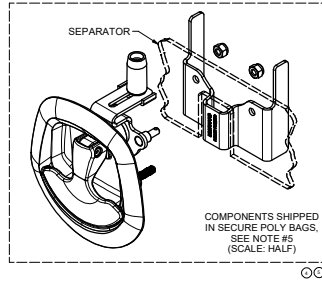
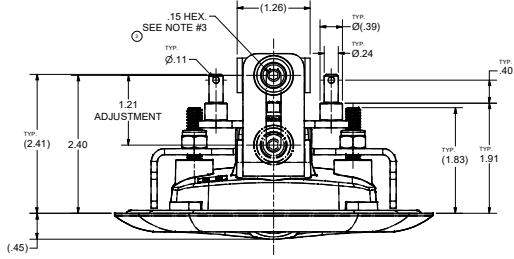
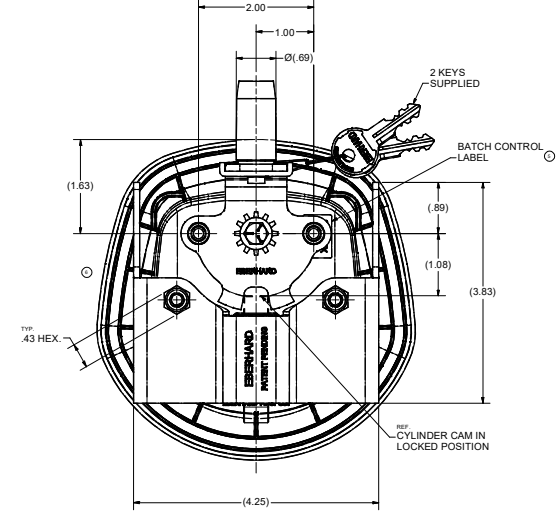
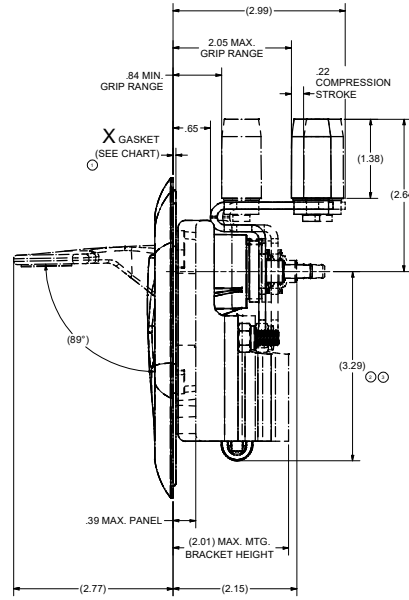
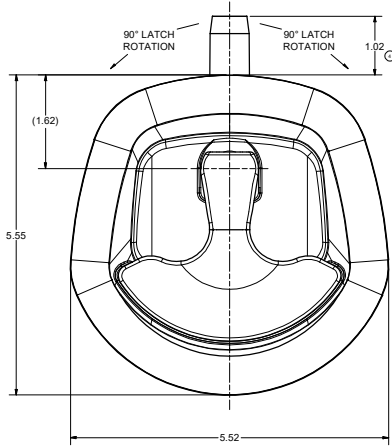
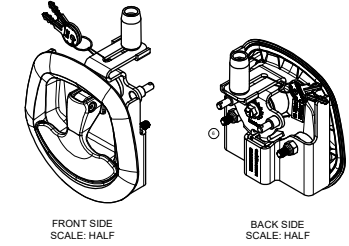


CONFIDENTIAL NOTICE: This drawing and the design, specifications and engineering information is the property of Eberhard Manufacturing Company and shall not be disseminated or reproduced without express written consent of the company. It is intended for the use of the customer and is not to be used for any other purpose. It is the responsibility of the customer to ensure that the drawing is used for the intended purpose and that the customer does not use it for any other purpose.

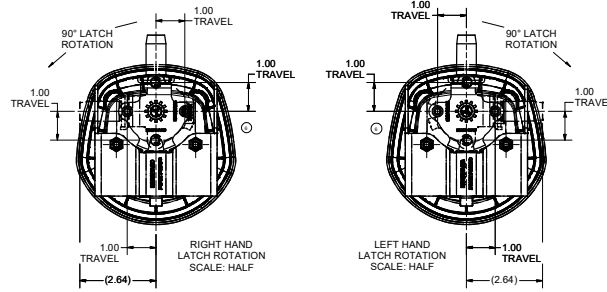
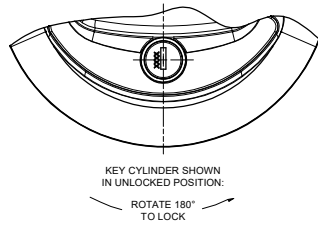


REVISION HISTORY					
REV	DESCRIPTION	EN	DATE	REV. BY	APVD. BY
	RELEASED, WAS 9-M11718 SHEET 1 OF 2	EN 5861	7/13/2018	SAA	LSW
1	REVISED VIEWS TO DETAIL, ADDED CHART, REVISED/ADDED NOTES, REVISED DIMENSION	EN 5869	9/7/2018	SAA	LSW
2	REVISED DIMENSION CHART	EN 5861	10/7/2018	SAA	LSW
3	REVISED DIMENSIONS, ADDED NOTE	EN 5930	11/22/2019	SAA	LSW
4	REVISED DIMENSION, REVISED/ADDED NOTES	EN 5935	1/10/2020	SAA	LSW
5	REVISED VIEW/NOTE, ADDED BATCH CONTROL LABEL	EN 5945	3/20/2020	SAA	LSW
6	REVISED VIEWS TO DETAIL	EN 5947	4/3/2020	SAA	LSW



GASKET THICKNESS			
PART NUMBER	X DIM.	GASKET TYPE	
28530	.05	25 DUROMETER TPE (O-RING)	
28530-A	.20	30 DUROMETER EPDM CLOSED CELL SPONGE	

- NOTES:
- FINISHES:
 - BLACK PLASTIC RECEPTACLE (TEXTURED), CHROME HANDLE, FC (03)
 - BLACK PLASTIC RECEPTACLE (TEXTURED), BLACK POWDER (TEXTURED) HANDLE, FC (02)
 - ASSEMBLY SHIPPED IN THE UNLOCKED POSITION.
 - RECOMMENDED TORQUE FOR TIGHTENING ADJUSTABLE ROLLER SCREW: 40-50 in.-lbs.
 - RECOMMENDED TORQUE FOR TIGHTENING MOUNTING HEX NUTS: 10 in.-lbs. MAX.
 - ASSEMBLIES SHIPPED IN A PARTITIONED BOX WITH THE HANDLE ASSEMBLY PLACED IN A SECURE POLY BAG AND THE MOUNTING BRACKET AND TWO HEX NUTS PLACED IN A SEPARATE SECURE POLY-BAG WITH A SEPARATOR BETWEEN THE COMPONENTS.
 - KEY CYLINDER WITH 10 KEY CHANGES, J201 THRU J210 SUPPLIED WITH TWO DOUBLE BITTED KEYS. EXAMPLE ORDER AS: 28530-A-JXXX-XX



ADD "A" FOR THICKER GASKET
FINISH CODE SEE NOTE #1
KEY NUMBER

CUSTOMER PRINT SHEET 1 OF 2

EBERHARD MANUFACTURING CO.
DIVISION OF THE EASTERN COMPANY
CLEVELAND, OHIO 44116-8712

KEY LOCKING THREE POINT COMPRESSION LATCH

28530