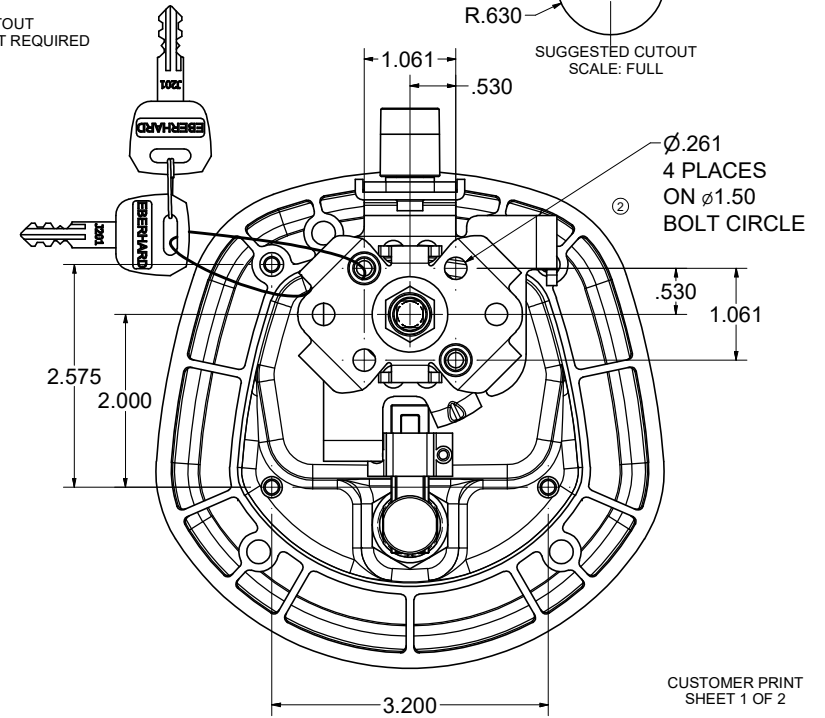
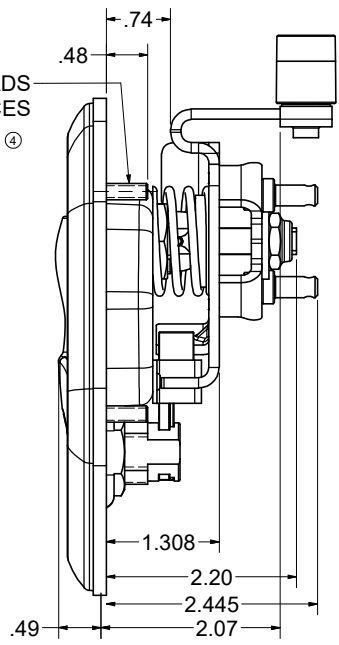
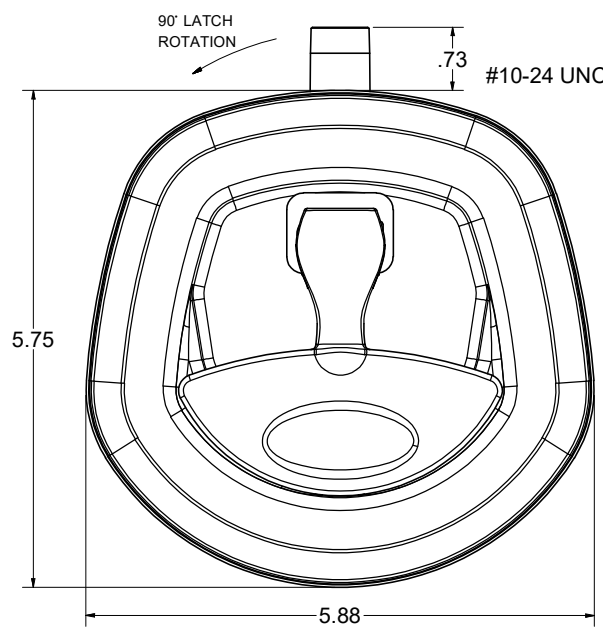
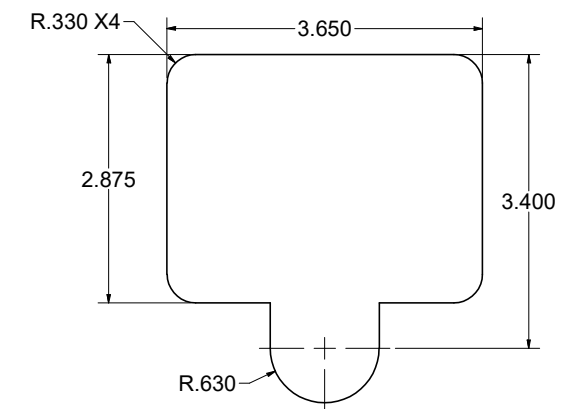
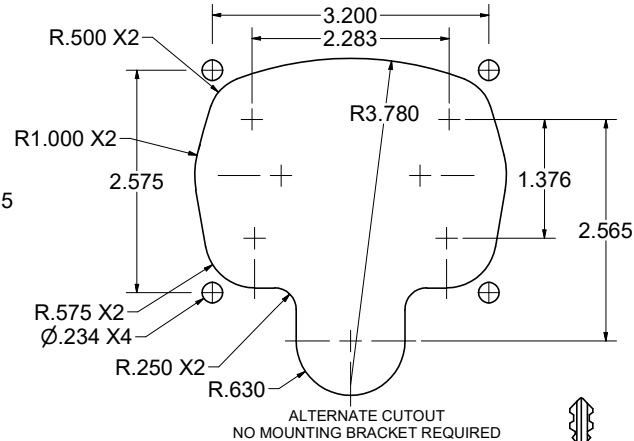
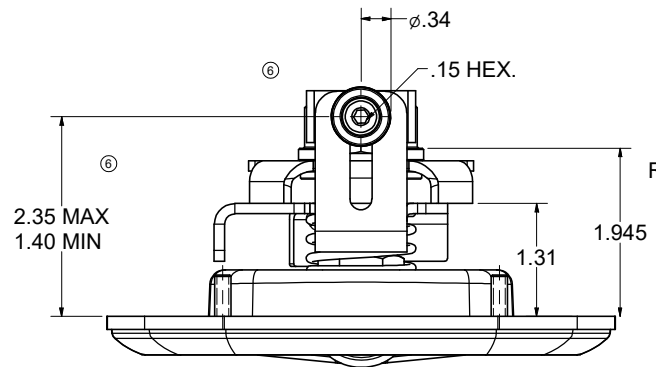


CONFIDENTIAL NOTICE: This drawing and the designs, specifications and engineering information disclosed hereon are the property of Eberhard Manufacturing Company and are not to be disseminated or reproduced without express written consent. The drawing is loaned in confidence and then only for consideration of the matter disclosed hereon. In accepting loan of this drawing, recipient agrees to keep it and the matter disclosed hereon in confidence and not to use nor permit their use in any way whatsoever by Eberhard Manufacturing Company, Division of the Eastern Company, 2184 Drake Road, Cleveland, Ohio 44116-9712. © 2015 EBEMANCO MFG CO.

REVISION HISTORY		EN	DATE	REV BY	APVD BY
REV	DESCRIPTION				
-	REVISED AND REDRAWN	5580	11-16-12		
1	REVISED STUD LOCATION	5583	12-14-2012		
2	REVISED STUD LOCATION: 10 & 4 O'CLOCK WAS 2 & 8 O'CLOCK	5592	2-22-2013		
3	ADDED FLAT WASHER BEHIND ROLLER	5595	3-15-2013		
4	ADDED THREAD CALLOUT FOR #10-24 THREADS	5648	4-4-2014		
5	PATENTED WAS PATENT PENDING, REVISED NOTE	5684	12-19-14		
6	ADDED: 2.35 MAX/1.40 MIN, ADJUSTMENT (.95), .69 DIA.	5685	1-9-15		
7	MODIFIED LATCH & ROLLER SUB-ASSEMBLY	5758	6/24/16	KAB	MR
8	CHANGE KEY NUMBERS TO J201 THRU J225 & J236	5890	2-15-2019	VRB	MR



NOTES:
 1. FINISHES:
 A. BRIGHT POLISHED RECEPTACLE AND CHROME HANDLE: FC (03)
 B. BLACK POWDER (TEXTURED) RECEPTACLE AND HANDLE, FC (42)
 C. BLACK POWDER (TEXTURED) RECEPTACLE AND CHROME HANDLE: FC (35)
 2. 35 IN-LBS MAX. TORQUE ON MOUNTING STUDS
 3. KEY CYLINDER KEY CHANGES: J201 THRU J225 & J236
 SUPPLIED WITH TWO DOUBLE BITTED KEYS (NOT SHOWN)
 EXAMPLE FOR 42 or 35 FINISH, ORDER: 28430-R/L-JXXX-42/35
 FOR 03 FINISH, ORDER 28430-R/LSS-JXXX-03
 KEY NUMBER FINISH CODE (SEE NOTE #1)

SUPERSEDES DRAWING 28430-RL DATED 1/19/2012

ASSEMBLY P/N	PANNEL THICKNESS	MOUNTING BRACKET KIT P/N	CUTOUT TYPE
28430-RL	.047	NONE	ALTERNATE
28430A-URL	.047	28400A-60U	STANDARD
28430B-URL	.079	28400B-60U	STANDARD
28430C-URL	.135	28400C-60U	STANDARD

5 PATENTED

THIS DOCUMENT IS IN ACCORDANCE WITH ASME Y14.19-2009

LINEAR MEASURE: INCH UNLESS OTHERWISE SPECIFIED TOLERANCES ARE AS FOLLOWS:	DATE 11/15/2012	NAME KEY LOCKING COMPRESSION LATCH - THREE POINT
ANGLES: # 2 # 2	SCALE FULL	MATERIAL
2 PLACE DEC: # .03 # .76	CHECK BY	PART NUMBER 28430-RL
3 PLACE DEC: # .015 # .38	CHK BY	CHG#
ALL HOLES: # .005 # .13		

EBERHARD MANUFACTURING CO.
 DIVISION OF
 THE EASTERN COMPANY
 CLEVELAND, OHIO 44116-9712

CUSTOMER PRINT SHEET 1 OF 2
 LEFT HAND SHOWN
 RIGHT HAND OPPOSITE