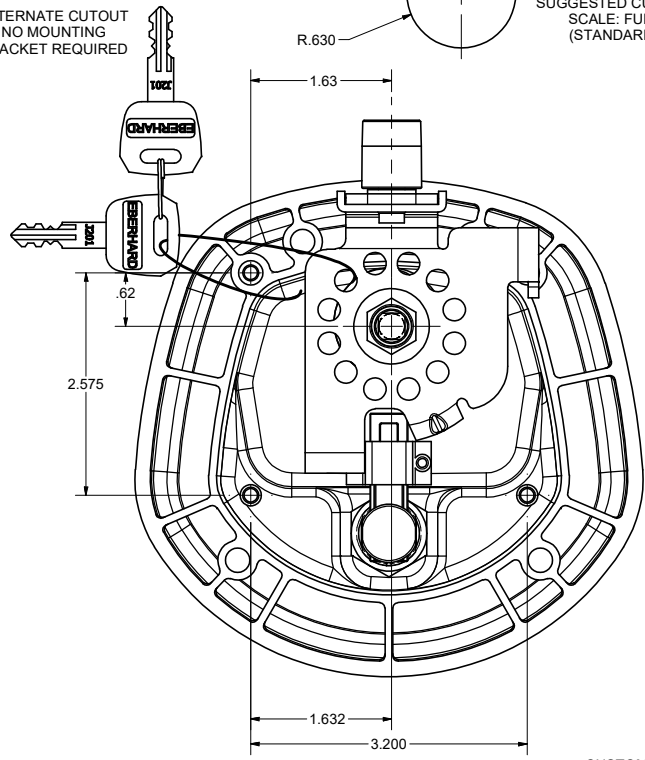
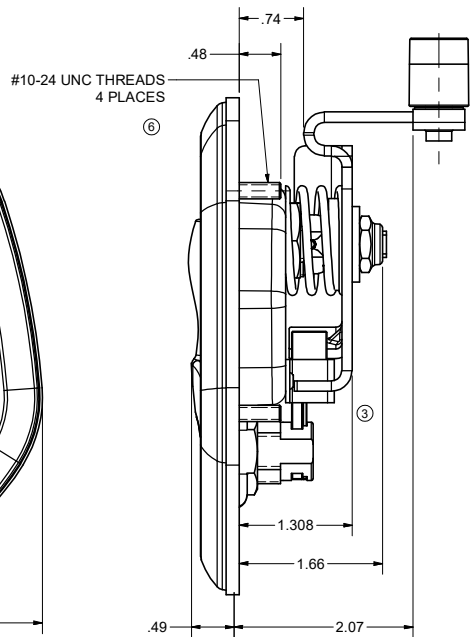
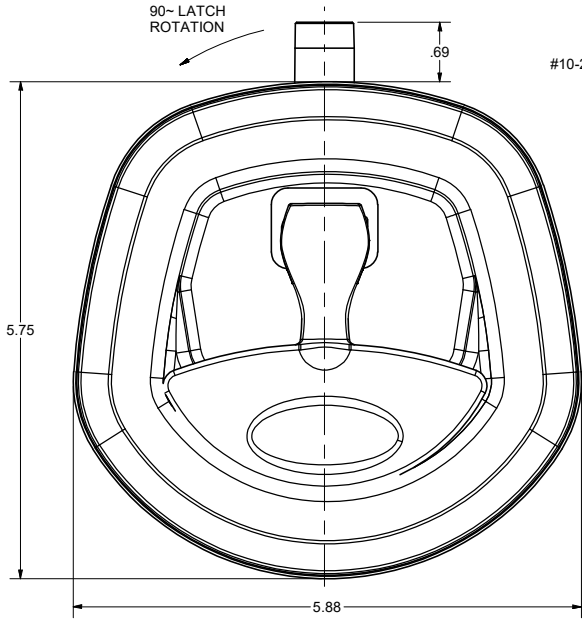
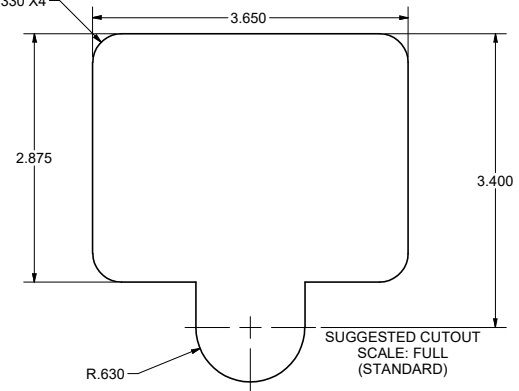
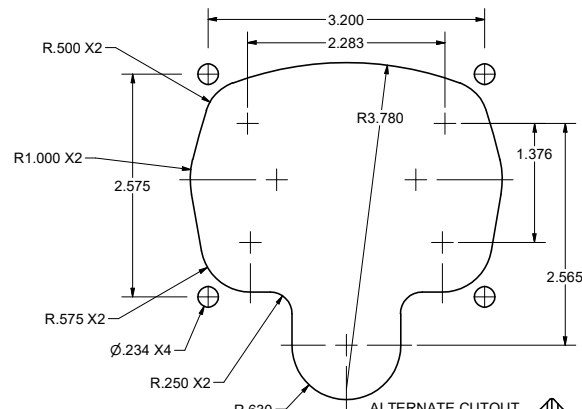
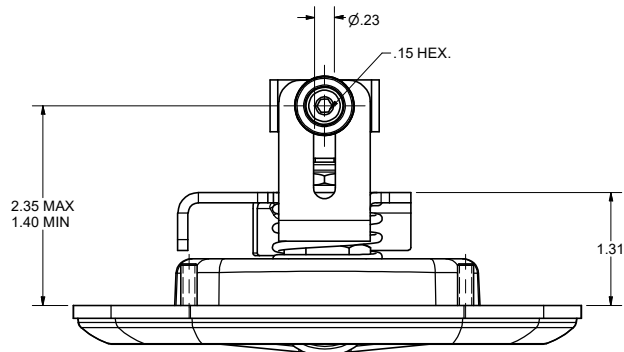


CONFIDENTIAL NOTICE: This drawing and the designs, specifications and engineering information disclosed hereon are the property of Eberhard Manufacturing Company and are not to be disseminated or reproduced without express written consent. The drawing is loaned in confidence and then only for consideration of the matter disclosed hereon. In accepting loan of this drawing, recipient agrees to keep it and the matter disclosed hereon in confidence and not to use nor permit their use in any way (except as directed) by Eberhard Manufacturing Company, Division of the Eastern Company, 2184 Drake Road, Cleveland, Ohio 44116-9712. © 2014 EBERHARD MFG. CO.

REVISION HISTORY					
REV	DESCRIPTION	EN	DATE	REV BY	APVD BY
1	RELEASED, REF 22-M10114-RV	5538	1-27-12		
1	3.650 WAS 3.680	5548	4-8-12		
2	REVISED FINISH NOTES	5552	5-4-12		
3	REVISED TO SERIAL	5556	6-1-12		
4	ADDED CHART WITH DIFFERENT PANEL THICKNESSES	5575	10-12-2012		
5	REVISED MOUNTING BRACKET PARTS NUMBER 60U WAS -60	5580	11-16-2012		
6	ADDED THE THREAD CALLOUTS	5648	4-4-2014		
7	PATENTED WAS PATENT PENDING	5684	12-19-14		
8	LATCH & ROLLER SUB-ASSY UPDATED	5758	6/24/2016	KAB	MR



- NOTES:
 1. FINISHES:
 A. BRIGHT POLISHED RECEPTACLE AND CHROME HANDLE: FC (03)
 B. BLACK POWDER (TEXTURED) RECEPTACLE AND HANDLE, FC (42)
 C. BLACK POWDER (TEXTURED) RECEPTACLE AND CHROME HANDLE: FC (35)
 2. 35 IN-LBS MAX. TORQUE ON MOUNTING STUDS
 3. KEY CYLINDER WITH 10 KEY CHANGES, J201 THRU J210
 SUPPLIED WITH TWO DOUBLE BITTED KEYS (NOT SHOWN)
 EXAMPLE ORDER AS: 28400-R/L-JXXX-XX

FINISH CODE
(SEE NOTE #1)
 KEY NUMBER

ASSEMBLY P/N	PANNEL THICKNESS	MOUNTING BRACKET KIT P/N	CUTOUT TYPE
28400-RL	N/A	NONE	ALTERNATE
28400A-URL	.047	28400A-60U	STANDARD
28400B-URL	.079	28400B-60U	STANDARD
28400C-URL	.135	28400C-60U	STANDARD

7 PATENTED

THIS DOCUMENT IS IN ACCORDANCE WITH ASME Y14.15-2009

UNLESS OTHERWISE SPECIFIED	1/19/2012
RELEASED AND	FLP
ANGLES: 1° 2° 3° 4° 5° 6° 8° 10° 15° 20° 25° 30° 35° 45° 60° 75° 90° 105° 120° 135° 150° 165° 180°	FULL
2 PLACE DEC: 0.01 0.05 0.10 0.25 0.50 1.00 2.00 5.00 10.00	DATE
3 PLACE DEC: 0.015 0.050 0.100 0.250 0.500 1.000 2.000 5.000 10.000	REV

CUSTOMER PRINT SHEET 1 OF 2
 LEFT HAND SHOWN
 RIGHT HAND OPPOSITE

EBERHARD MANUFACTURING CO.
 DIVISION OF
 THE EASTERN COMPANY
 CLEVELAND, OHIO 44148-9712

KEY LOCKING COMPRESSION LATCH

PART NUMBER: 28400-R/L