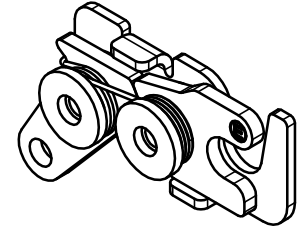
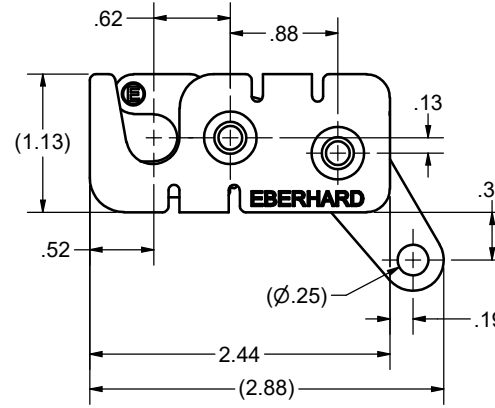
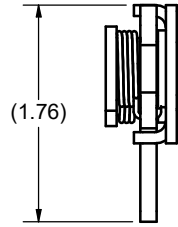
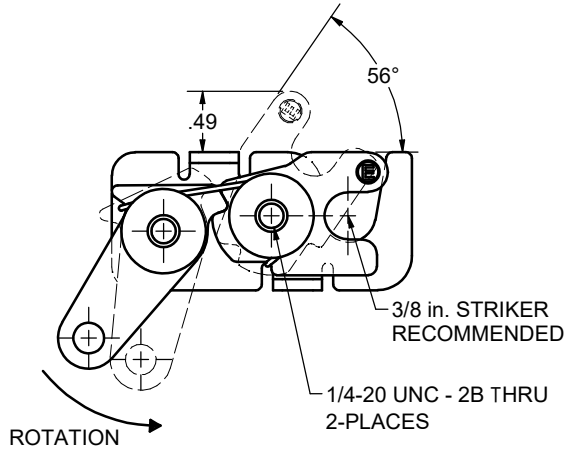
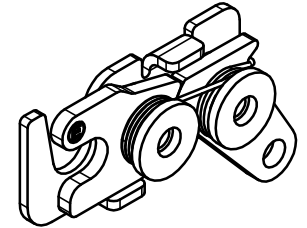


**CONFIDENTIAL NOTICE:** This drawing and the designs, specifications, and engineering information hereon are the property of Eberhard Manufacturing Company and are not to be disseminated or reproduced without express written consent. This drawing is loaned in confidence and then only for the consideration of the matter disclosed hereon. In accepting loan of this drawing, recipient agrees to keep it and the matter disclosed hereon in confidence and not to use or permit their use in any way detrimental to Eberhard Manufacturing Company, Division of The Eastern Company, 21944 Drake Road, Cleveland, Ohio, 44149-9712 © 2024 EBERHARD MFG. CO.

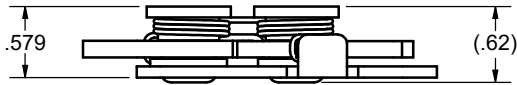
REVISION HISTORY					
REV	DESCRIPTION	EN	DATE	REV. BY	APVD BY
-	RELEASED PER NPD 50010	6162	8/9/2024	DJK	MR
1	ADDED LOAD RATING TO PRINT	6177	11/22/2024	DJK	MR



26-26241-R  
SCALE 1:1



26-26241-L  
SCALE 1:1



- NOTES:
1. EBERHARD AVAILABLE FINISH:  
(24) ELECTROPLATED ZINC
  2. USE 1/4-20 GRADE 8 BOLTS FOR INSTALLATION.
  - ① 3. MAX LOAD RATING: 500 LBS

## WARNING

THIS PRODUCT IS NOT CERTIFIED FOR FMVSS 206 OR PERSONAL RESTRAINT APPLICATIONS

THIS DOCUMENT IS IN ACCORDANCE WITH ASME Y14.5-2009		
LINEAR MEASUREMENT - INCH	DATE	
UNLESS OTHERWISE SPECIFIED TOLERANCES ARE AS FOLLOWS:	8/9/2024	
ANGLES:	IN	MM
2 PLACE DEC.:	± .03	± .076
3 PLACE DEC.:	± .015	± .38
ALL HOLES:	± .005	± .13

CUSTOMER PRINT

**EBERHARD MANUFACTURING CO.**  
DIVISION OF  
THE EASTERN COMPANY  
CLEVELAND, OHIO 44149-9712

NAME	
OPEN FRAME ROTARY BOTTOM REARSE	
MATERIAL	PART NUMBER
	26-26241-RL