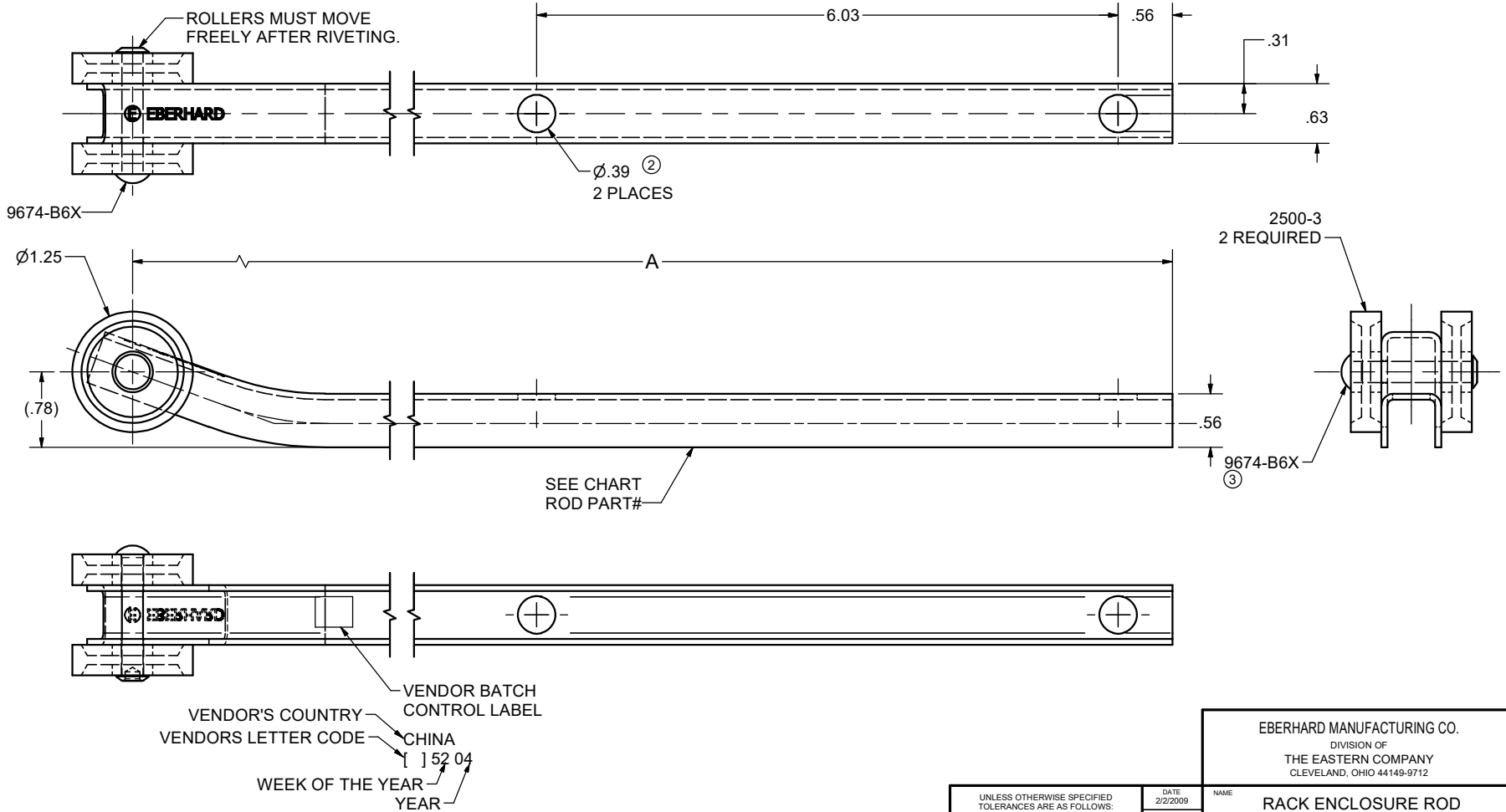


CONFIDENTIAL NOTICE: This drawing and the designs, specifications and engineering information disclosed hereon are the property of Eberhard Manufacturing Company and are not to be disseminated or reproduced without express written consent. The drawing is loaned in confidence and then only for consideration of the matter disclosed hereon. In accepting loan of this drawing, recipient agrees to keep it and the matter disclosed hereon in confidence and not to use nor permit their use in any way detrimental to Eberhard Manufacturing Company, Division of the Eastern Company, 21944 Drake Road, Cleveland, Ohio 44149-9712 © 2010 EBERHARD MFG. CO.

REVISION HISTORY					
REV	DESCRIPTION	EN	DATE	REV BY	APVD BY
-	CONVERTED TO 3D	EN 5391	2/27/2009		
1	ADDED BATCH ID	EN 5439	2-5-10		
2	ADDED: .39 DIA, 2 PLACES	5829	11-17-17	FLP	MR
3	ADD 19-2500-50, ADD LEADER NOTE, SEE PP12965	5947	4-3-2020	VRB	MR
4	17.81 WAS 17.75	5948	4/24/2020	VRB	MR

TABLE		
SUB ASSEMBLY	ROD PART #	A LENGTH
2500-50	2500-6	34.59
1-2500-50	1-2500-6	47.59
2-2500-50	2-2500-6	59.59
③ 19-2500-50	19-2500-6	17.81



NOTES:  
FINISH: (65) ELECTROPLATED ZINC W/YELLOW CONVERTER

SUPERSEDES DRAWING 2500-50 DATED 8-16-93.  
SUPERSEDES DRAWING 1-2500-50 DATED 4-16-97.  
SUPERSEDES DRAWING 2-2500-50 DATED 10-1-91.

UNLESS OTHERWISE SPECIFIED TOLERANCES ARE AS FOLLOWS:	
ANGLES:	±2°
2 PLACE DEC.:	±.03
3 PLACE DEC.:	±.015
ALL HOLES:	±.005

DATE 2/2/2009	NAME RACK ENCLOSURE ROD SUB-ASSEMBLY	
DR BY MAR	MATERIAL	
SCALE FULL	PART NUMBER 2500-50	CHART
CHK BY		

EBERHARD MANUFACTURING CO.  
DIVISION OF  
THE EASTERN COMPANY  
CLEVELAND, OHIO 44149-9712

C:\TEMP\16a6aedf-99a9-447e-8980-0b0e32ae9492\FASTENER\RODS\ROLLERS ON END\2500-50.idw