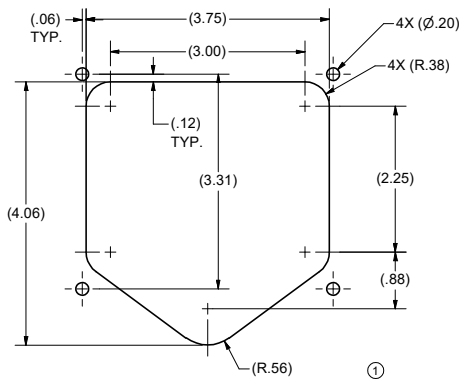
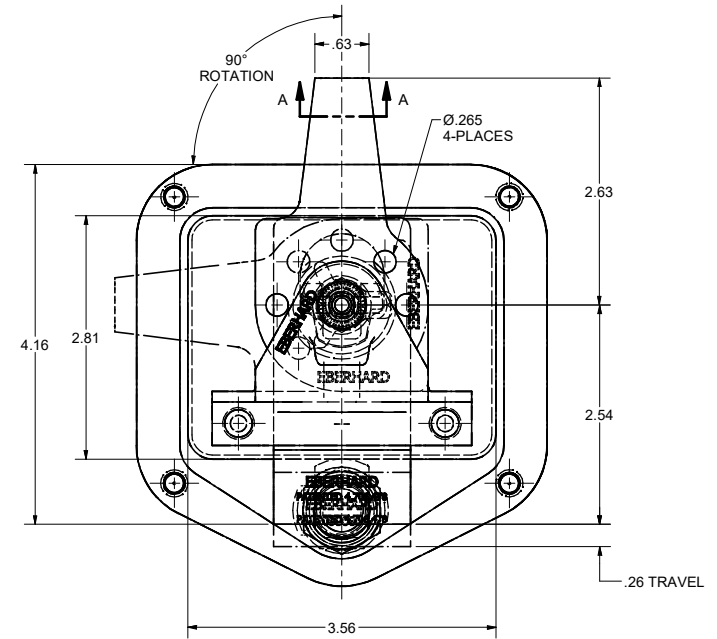
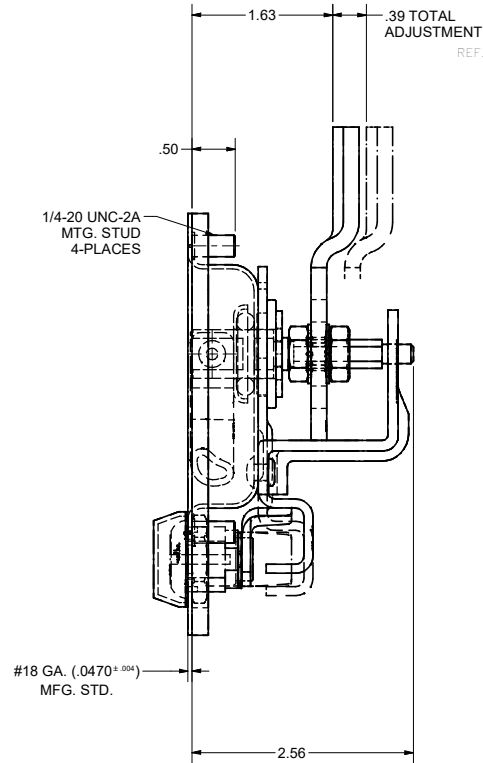
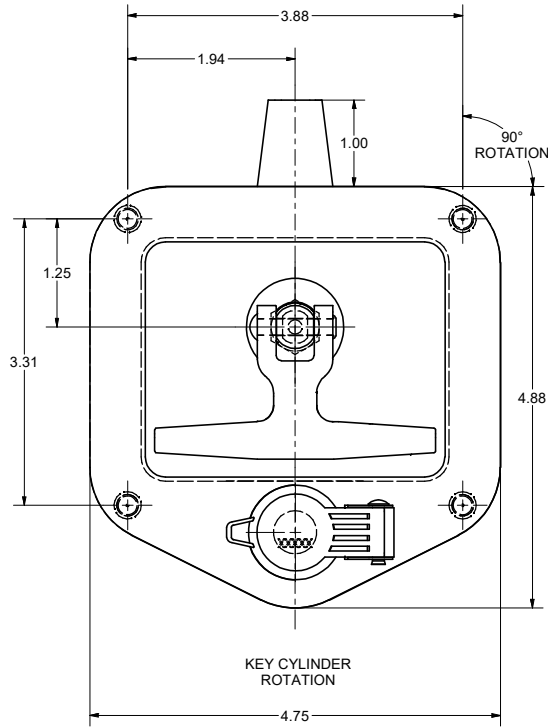


CONFIDENTIAL NOTICE: This drawing and the designs, specifications and engineering information disclosed hereon are the property of Eberhard Manufacturing Company and are not to be disseminated or reproduced without express written consent. The drawing is loaned in confidence and then only for consideration of the matter disclosed hereon. In accepting loan of this drawing, recipient agrees to keep it and the matter disclosed hereon in confidence and not to use nor permit their use in any way whatsoever to Eberhard Manufacturing Company, Division of the Eastern Company, 2184 Drake Road, Cleveland, Ohio 44149-0712. © 2011 EBERHARD MFG. CO.

REVISION HISTORY		EN	DATE	REV. BY	APVD. BY
REV	DESCRIPTION				
1	REVISED & REDRAWN, CONVERTED TO 3D	EN 5520	9-9-2011		
1	MODIFIED SUGGESTED CUTOFF VIEW	5722	09/25/2015		
2	CREATED SHEET 1 AND 2, ADDED KEY #	5963	8/14/2020	DJK	MR



- NOTE:
1. RECEPTACLE GASKET TO BE FULLY ASSEMBLED ONTO THE MOUNTING STUDS AND POSITIONED AGAINST THE RECEPTACLE FLANGE.
 2. GREASE BOTTOM OF LOCK SLIDE PRIOR TO ASSEMBLY USING LUBRIPLATE 1200-2.
 3. MAX. FASTENER TORQUE: 43 IN-LB
 4. AVAILABLE KEY NO'S: 501CH THRU 510CH, 513CH, AND 530CH THRU 550CH. EXAMPLE ORDER P/N: 25-8400-SSRL-501-10

PART NUMBER → KEY NUMBER → FINISH CODE

② CUSTOMER PRINT SHEET 1 OF 2
RIGHT HAND SHOWN
LEFT HAND OPPOSITE

EBERHARD MANUFACTURING CO. DIVISION OF THE EASTERN COMPANY CLEVELAND, OHIO 44148-9712	
KEY LOCKING FOLDING HANDLE W/ADJUSTABLE LATCH, DUST COVER, AND WATER RESISTANT FEATURE	
25-8400-SSRL	

UNLESS OTHERWISE SPECIFIED TOLERANCES ARE AS FOLLOWS:		9-8-2011
ANGLES:	±.2°	
2 PLACE DEC.:	±.03	
3 PLACE DEC.:	±.015	
ALL HOLES:	±.005	

SUPERSEDES DRAWING 25-8400-SS RL DATED 3-10-03.