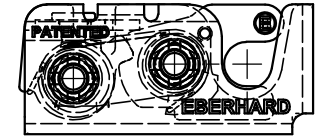
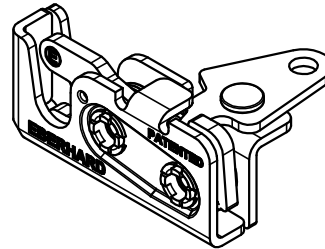
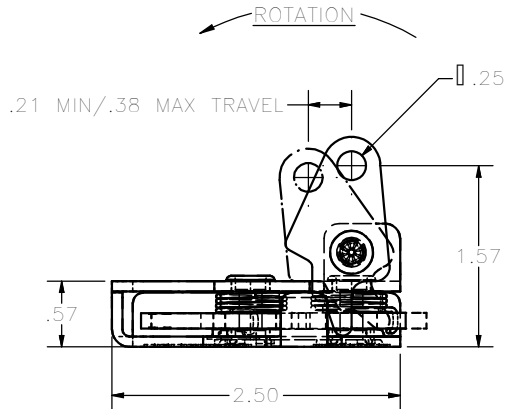
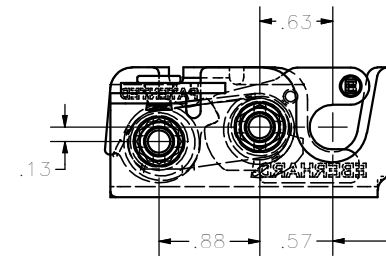
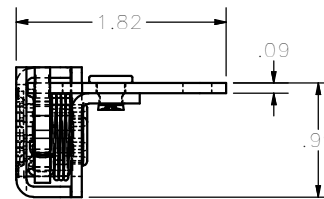
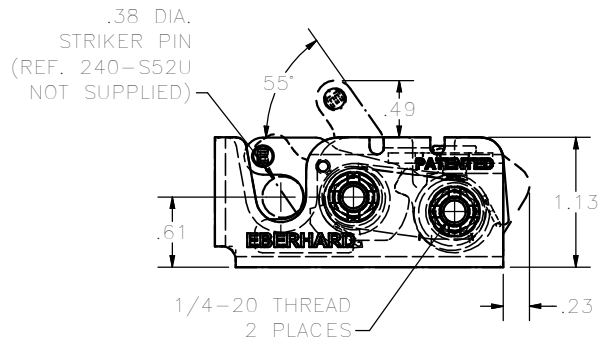


CONFIDENTIAL NOTICE: This drawing and the designs, specifications and engineering information disclosed hereon are the property of Eberhard Manufacturing Company and are not to be disseminated or reproduced without express written consent. The drawing is loaned in confidence and then only for consideration of the matter disclosed hereon. In accepting loan of this drawing, recipient agrees to keep it and the matter disclosed hereon in confidence and not to use nor permit their use in any way detrimental to Eberhard Manufacturing Company, Division of the Eastern Company, 21944 Drake Road, Cleveland, Ohio 44149-9712 © 2012 EBERHARD MFG. CO.

REVISION HISTORY			
REV	DESCRIPTION	EN	DATE
	REVISED, REDRAWN AND CONVERTED TO 3D	5575	10-12-12



241-L
LEFT HAND
SINGLE STAGE
MINI-ROTARY™ LOCK



- NOTES:
- USE 1/4-20 GRADE 8 BOLTS FOR INSTALLATION.
RECOMMENDED TORQUE FOR TIGHTENING: 14 FT./LBS.
 - MAX LOAD RATING: 750 LBS
 - FINISH: PASSIVATED QQ-P-35 TYPE 1, FC (22)

CUSTOMER PRINT
SHEET 1 OF 2

PATENTED
RIGHT HAND SHOWN
LEFT HAND OPPOSITE

EBERHARD MANUFACTURING CO.
DIVISION OF
THE EASTERN COMPANY
CLEVELAND, OHIO 44149-9712

THIS DOCUMENT IS IN ACCORDANCE WITH ASME Y14.15-2009		DATE 10/12/2012
UNLESS OTHERWISE SPECIFIED TOLERANCES ARE AS FOLLOWS:		DESIGNER FLP
ANGLES:	0.00 0.00	SCALE FULL
2 PLACE DEC.:	0.03 0.76	MATERIAL
3 PLACE DEC.:	0.015 0.38	CHECKED BY
ALL DIMS:	0.015 0.25	

NAME SINGLE STAGE MINI-ROTARY LOCK	
MATERIAL	PART NUMBER 241-SSR/L

WARNING
THIS PRODUCT MUST NOT BE USED FOR
PERSONAL RESTRAINT APPLICATIONS

MINI-ROTARY™ IS A TRADEMARK OF EBERHARD MFG. CO.,
DIVISION OF THE EASTERN COMPANY.

SUPERSEDES DRAWING 241-SS RL SH1 DATED 8-27-96.