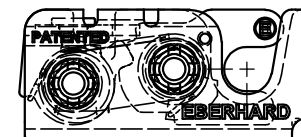
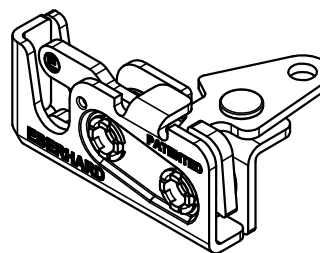
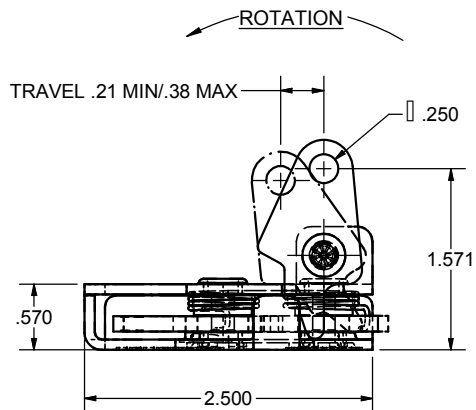
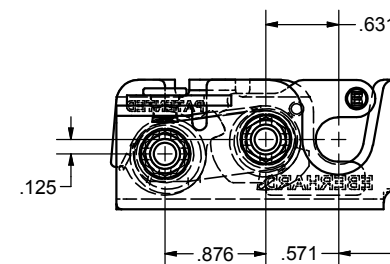
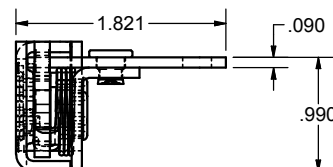
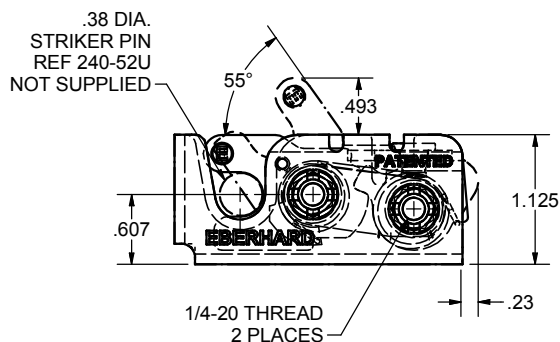


CONFIDENTIAL NOTICE: This drawing and the designs, specifications and engineering information disclosed hereon are the property of Eberhard Manufacturing Company and are not to be disseminated or reproduced without express written consent. The drawing is loaned in confidence and then only for consideration of the matter disclosed hereon. In accepting loan of this drawing, recipient agrees to keep it and the matter disclosed hereon in confidence and not to use nor permit their use in any way detrimental to Eberhard Manufacturing Company, Division of the Eastern Company. 21944 Drake Road, Cleveland, Ohio 44149-9712 © 2016 EBERHARD MFG. CO.

REVISION HISTORY					
REV	DESCRIPTION	EN	DATE	REV BY	APVD BY
	REVISED, REDRAWN AND CONVERTED TO 3D	5575	10-12-12		
1	REVISED NOTE	5742	3-4-16	FLP	MR



240-L  
LEFT HAND  
MINI-ROTARY LOCK



PATENTED  
RIGHT HAND SHOWN  
LEFT HAND OPPOSITE

CUSTOMER PRINT  
SHEET 1 OF 2

- NOTES:
- USE 1/4-20 GRADE 8 BOLTS FOR INSTALLATION.  
RECOMMENDED TORQUE FOR TIGHTENING: 14 FT./LBS.
  - MAX LOAD RATING: 750 LBS
  - FINISHES:  
A. EVERLUBE INTERNAL COMPONENTS, FC (54)  
B. BEARING GREASE WITH EVERLUBE INTERNAL COMPONENTS, FC (BG)
  - TO ORDER 50 PCS. PER BOX, ORDER: 240-R/L-BX50-54 OR 240-R/L-BX50-BG.



MINI-ROTARY IS A TRADEMARK OF EBERHARD MFG. CO.,  
DIVISION OF THE EASTERN COMPANY.

SUPERSEDES DRAWING 240 RL SH1 DATED 5-21-96.

THIS DOCUMENT IS IN ACCORDANCE WITH ASME Y14.5-2009		THE EASTERN COMPANY CLEVELAND, OHIO 44149-9712				
LINEAR MEASURE: INCH		DATE	NAME			
UNLESS OTHERWISE SPECIFIED TOLERANCES ARE AS FOLLOWS:		10/11/2012				
		DR BY	DUAL STAGE MINI-ROTARY LOCK			
		FLP				
		SCALE				
ANGLES:	<table><tr><td>0.00</td><td>0.01</td><td>0.02</td></tr></table>	0.00	0.01	0.02	SCALE	PART NUMBER
0.00	0.01	0.02				
2 PLACE DEC.:	<table><tr><td>0.03</td><td>0.04</td><td>0.05</td></tr></table>	0.03	0.04	0.05	FULL	
0.03	0.04	0.05				
3 PLACE DEC.:	<table><tr><td>0.015</td><td>0.02</td><td>0.025</td></tr></table>	0.015	0.02	0.025	CHK BY	
0.015	0.02	0.025				
ALL HOLES:	<table><tr><td>0.015</td><td>0.02</td><td>0.025</td></tr></table>	0.015	0.02	0.025	MATERIAL	
0.015	0.02	0.025				
		-----				
		240-R/L				

C:\Working\_Folder\Archive\Pro2\240 RL SH1.idw