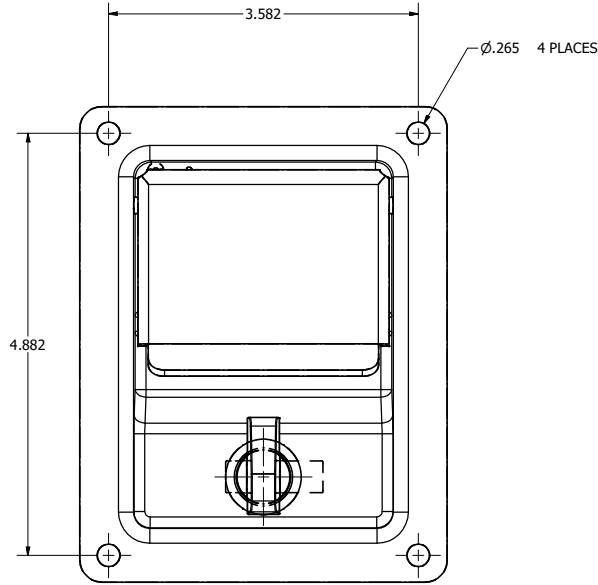
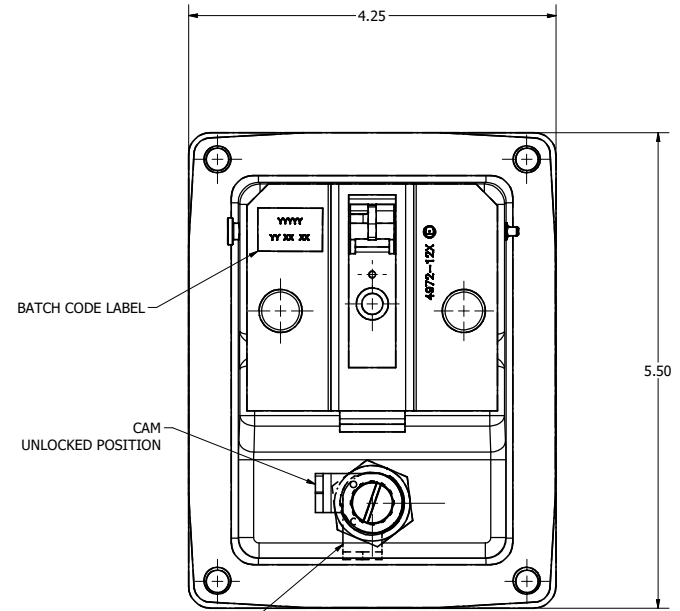
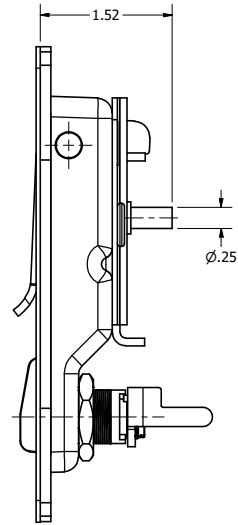


CONFIDENTIAL NOTICE: This drawing and the designs, specifications and engineering information disclosed hereon are the property of Eberhard Manufacturing Company and are not to be disseminated or reproduced without express written consent. The drawing is loaned in confidence and then only for consideration of the matter disclosed hereon. In accepting loan of this drawing, recipient agrees to keep it and the matter disclosed hereon in confidence and not to use nor permit their use in any way detrimental to Eberhard Manufacturing Company, Division of the Eastern Company, 2184 Drake Road, Cleveland, Ohio 44149-0712. © 2016 EBERHARD MFG. CO.

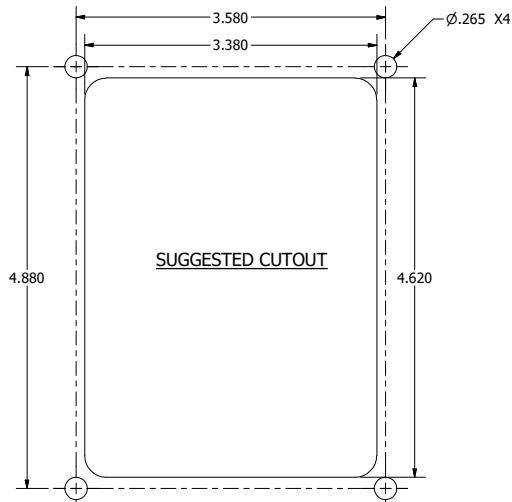
REVISION HISTORY					
REV	DESCRIPTION	EN	DATE	REV. BY	APVD. BY
1	RELEASE TO PRODUCTION SAME AS 23-5974-51, REF:PP11871	5765	8/12/2016	KAB	MR
1	ADDED: NOTE, ®	5797	4-7-17	FLP	MR



LOCK ROTATION THIS DIRECTION 90°



CAM ROTATION THIS DIRECTION 90°



SUGGESTED CUTOUT

- NOTES:
 1. EBERHARD FINISH CODE: ELECTROZINC, FC (25)
 2. MOUNTING FASTENERS MAX. FASTENING TORQUE:43 IN-LBS.
 ① 3. REGISTERED IN THE U.S. PATENT AND TRADEMARK OFFICE.

CUSTOMER PRINT SHEET 1 OF 2

EBERHARD MANUFACTURING CO.
 DIVISION OF
 THE EASTERN COMPANY
 CLEVELAND, OHIO 44149-0712

INSIDE PADDLE HANDLE FOR ROD LOCK SYSTEM

THIS DOCUMENT IS IN ACCORDANCE WITH ASME Y14.15-2009		DATE	8/12/2016
UNLESS OTHERWISE SPECIFIED TOLERANCES ARE AS FOLLOWS:		DR BY	K.BRALIN
LINEAR MEASURE: INCH	MM	SCALE	NTS
2 PLACE DEC:	± .03	3 PLACE DEC:	± .015
ALL HOLES:	± .005	CHK BY:	MR

MATERIAL	PART NUMBER
	23C-5974-51