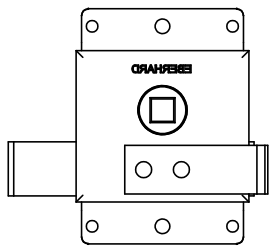
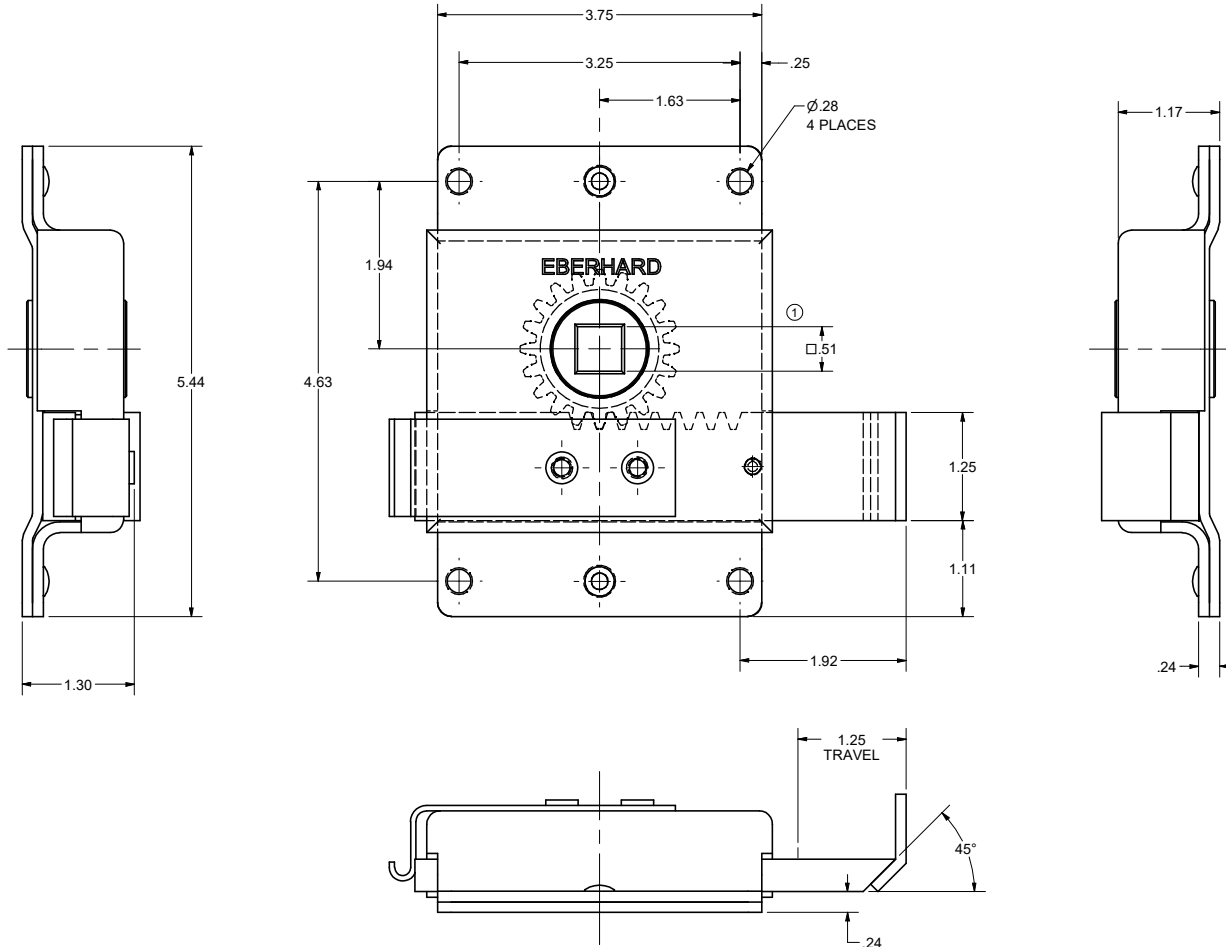
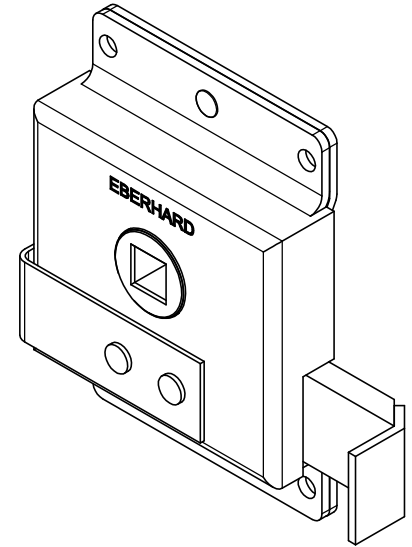


CONFIDENTIAL NOTICE: This drawing and the designs, specifications and engineering information disclosed hereon are the property of Eberhard Manufacturing Company and are not to be disseminated or reproduced without express written consent. The drawing is loaned in confidence and then only for consideration of the matter disclosed hereon. In accepting loan of this drawing, recipient agrees to keep it and the matter disclosed hereon in confidence and not to use nor permit their use in any way detrimental to Eberhard Manufacturing Company, Division of the Eastern Company, 21944 Drake Road, Cleveland, Ohio 44149-9712, © 2010 EBERHARD MFG. CO.

REVISION HISTORY					
REV	DESCRIPTION	EN	DATE	REV BY	APVD BY
1	REVISED, REDRAWN AND CONVERTED TO 3D	550	4-18-14	FLP	
1	ADDED: 51 SQ.	579	11-18-18	FLP	MR



LEFT HAND



NOTE: FINISH: ZINC, FC (25)

LEFT HAND OPPOSITE
RIGHT HAND SHOWN
CUSTOMER PRINT
SHEET 1 OF 2

THIS DOCUMENT IS IN ACCORDANCE WITH ASME Y14.5-2009		DATE 4/18/2014	NAME EMERGENCY REAR DOOR LOCK ASSEMBLY WITH BOLT EXTENSION
UNLESS OTHERWISE SPECIFIED TOLERANCES ARE AS FOLLOWS:		DR BY FLP	MATERIAL ----
LINEAR MEASURE: INCH		SCALE FULL	PART NUMBER 2390-AMR/L
2 PLACE DEC: ± .03	± .75	CHK BY	
3 PLACE DEC: ± .015	± .35		
ALL HOLES: ± .005	± .13		

SUPERSEDES DRAWING 2390-AMR/L SHEET 1 OF 2 DATED 1-10-00.

C:\Working_Folder\Archive\Pro\2390_9\102390-AMR SH11.dwg