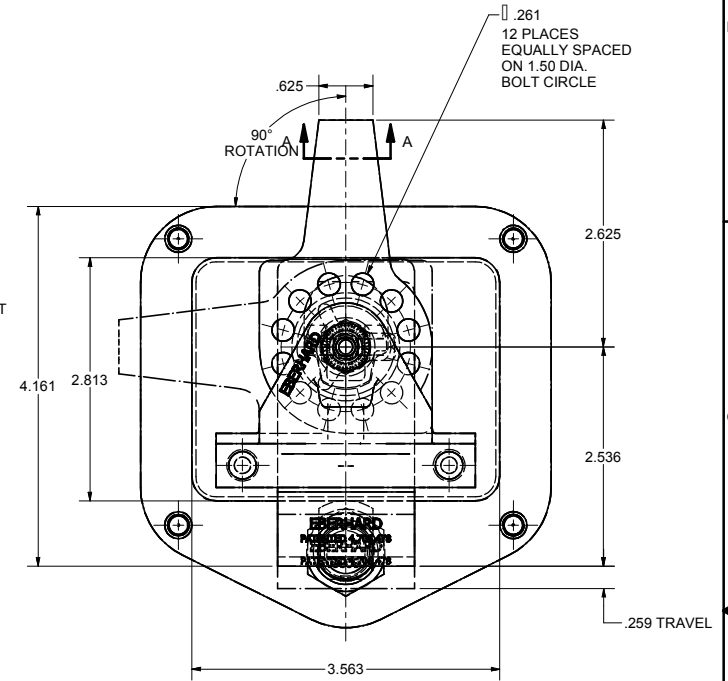
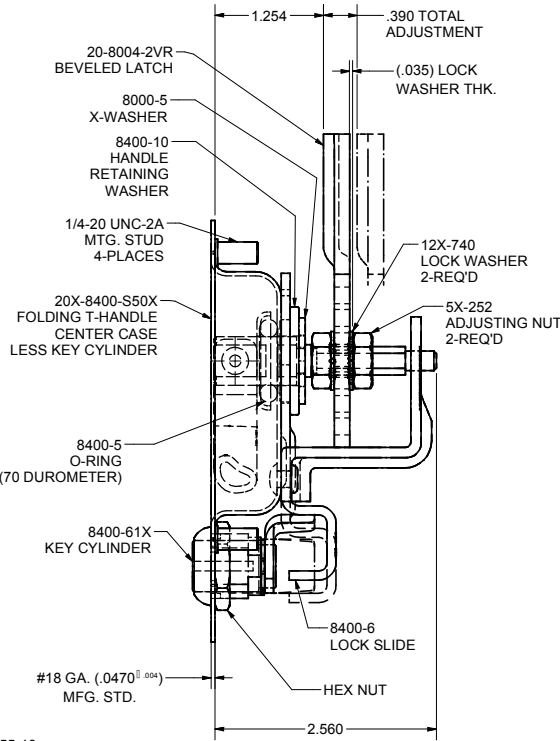
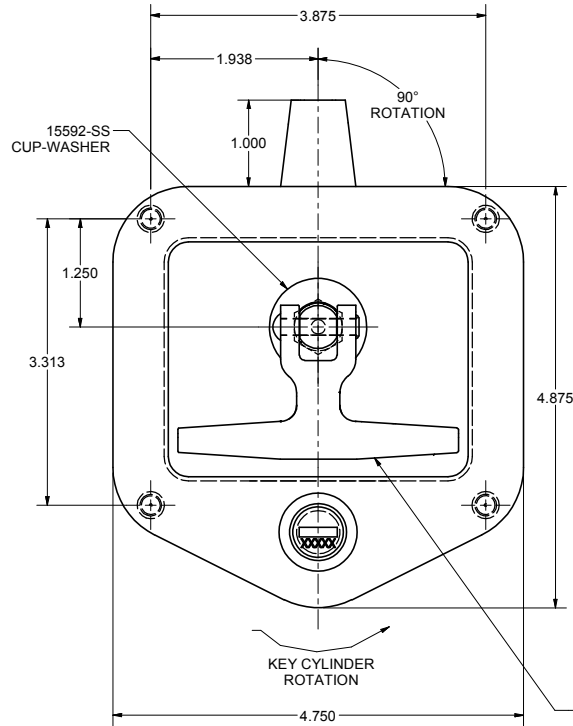


CONFIDENTIAL NOTICE: This drawing and the designs, specifications and engineering information disclosed herein are the property of Eberhard Manufacturing Company and are not to be disseminated or reproduced without express written consent. The drawing is loaned in confidence and then only for consideration of the matter disclosed herein. In accepting loan of this drawing, recipient agrees to keep it and the matter disclosed herein in confidence and not to use nor permit their use in any way (except as approved by Eberhard Manufacturing Company, Division of the Eastern Company, 21944 Drake Road, Cleveland, Ohio 44148-9712, © 2011 EBERHARD MFG. CO.)

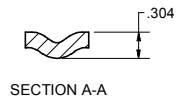
REVISION HISTORY			
REV	DESCRIPTION	EN	DATE
7	REVISED & REDRAWN, CONVERTED TO 3D	EN 8521	9-16-2011
1	MODIFIED SUGGESTED CUTOUT VIEW	8721	09-18-2015



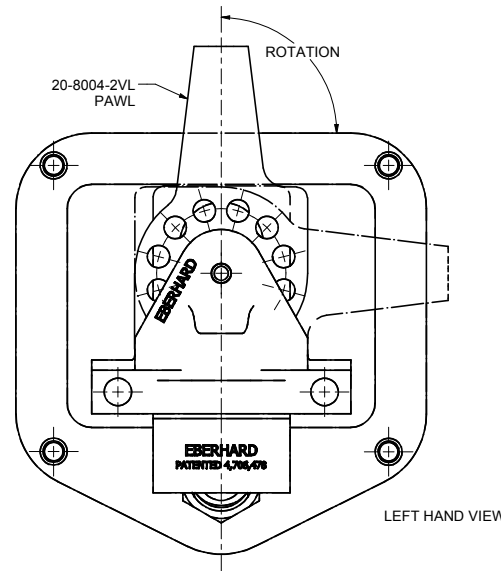
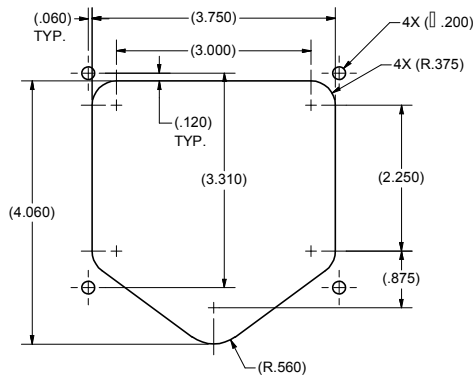
NOTE:  
 OPTIONAL GASKET AVAILABLE  
 ORDER P/N: 16553  
 MATERIAL: EPDM CLOSED CELL SPONGE  
 THICKNESS: .19  
 COLOR: BLACK

NOTE:  
 GREASE BOTTOM OF LOCK SLIDE PRIOR  
 TO ASSEMBLY USING LUBRIPLATE 1200-2.

NOTE:  
 MAX. FASTENER TORQUE  
 43 IN./LBS.



RIGHT HAND SHOWN  
 LEFT HAND OPPOSITE



UNLESS OTHERWISE SPECIFIED TOLERANCES ARE AS FOLLOWS:		9-13-2011
ANGLES:	± .01	MBH
2 PLACE DEC.:	± .03	FULL
3 PLACE DEC.:	± .015	
ALL HOLES:	± .005	

<b>EBERHARD MANUFACTURING CO.</b> DIVISION OF THE EASTERN COMPANY CLEVELAND, OHIO 44148-9712	
<b>KEY LOCKING FOLDING HANDLE WITH ADJUSTABLE LATCH AND WATER RESISTANT FEATURE</b>	
20X-8400-SSR/L	

SUPERSEDES DRAWING 20X-8400-SS RL DATED 2-25-03.