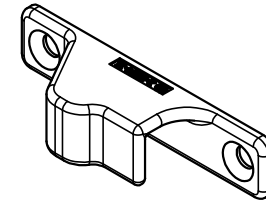
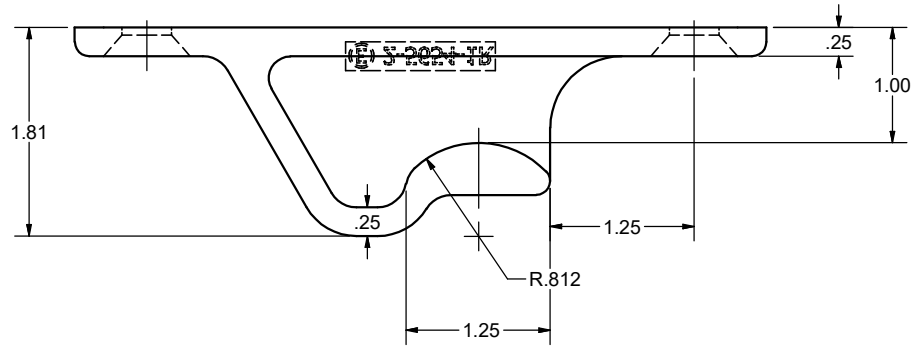
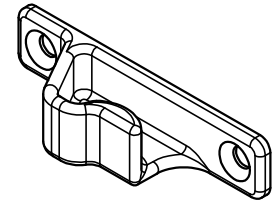


CONFIDENTIAL NOTICE: This drawing and the designs, specifications and engineering information disclosed hereon are the property of Eberhard Manufacturing Company and are not to be disseminated or reproduced without express written consent. The drawing is loaned in confidence and then only for consideration of the matter disclosed hereon. In accepting loan of this drawing, recipient agrees to keep it and the matter disclosed hereon in confidence and not to use nor permit their use in any way detrimental to Eberhard Manufacturing Company, Division of the Eastern Company, 21944 Drake Road, Cleveland, Ohio 44149-9712 © 2014 EBERHARD MFG. CO.

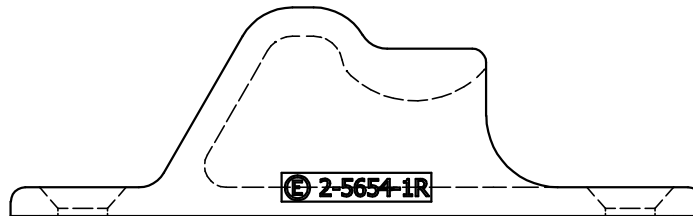
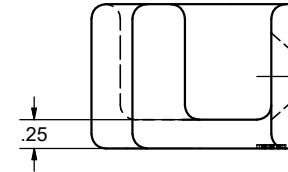
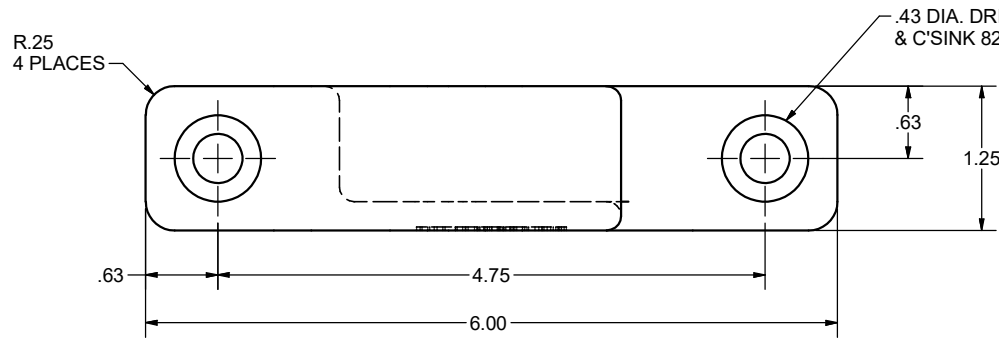
REVISION HISTORY					
REV	DESCRIPTION	EN	DATE	REV BY	APVD BY
	RELEASED, REF PP 12313-A	5812	7-21-17	FLP	MR



LEFT HAND
SCALE: HALF



RIGHT HAND
SCALE: HALF



RIGHT HAND SHOWN
LEFT HAND OPPOSITE
CUSTOMER PRINT
SHEET 1 OF 2

EBERHARD MANUFACTURING CO.
DIVISION OF
THE EASTERN COMPANY
CLEVELAND, OHIO 44149-9712

THIS DOCUMENT IS IN ACCORDANCE WITH ASME Y14.15-2009		THE EASTERN COMPANY CLEVELAND, OHIO 44149-9712	
LINEAR MEASURE: INCH		NAME	KEEPER
UNLESS OTHERWISE SPECIFIED TOLERANCES ARE AS FOLLOWS:		DATE 7/21/2017	
IN MM		DR BY FLP	
ANGLES: ± 2° ± 2°		SCALE FULL	
2 PLACE DEC.: ± .03 ± .76		MATERIAL	
3 PLACE DEC.: ± .015 ± .38		GRADE 32510 MALLEABLE IRON	
ALL HOLES: ± .005 ± .13		PART NUMBER 2-5654-1R/L	