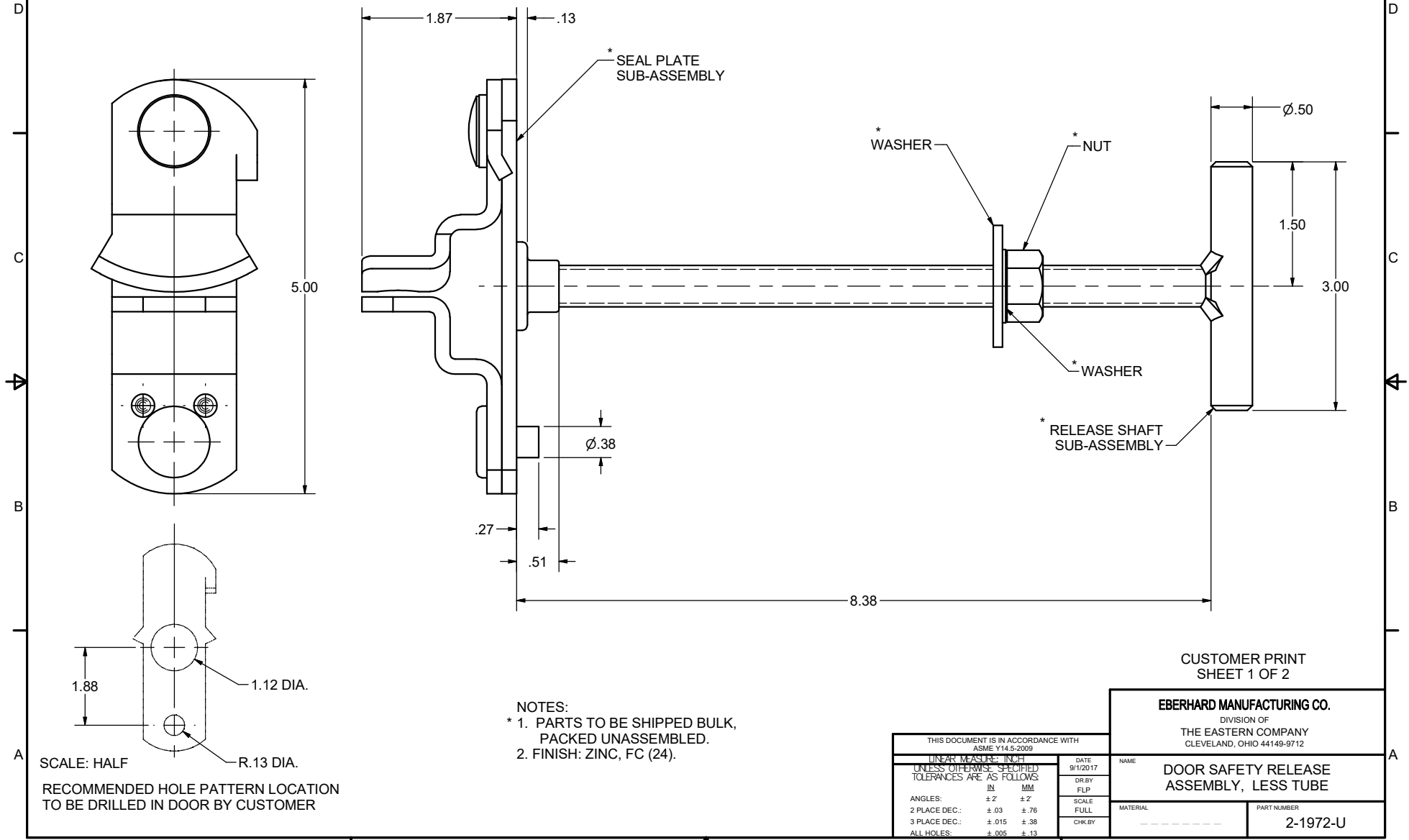


CONFIDENTIAL NOTICE: This drawing and the designs, specifications and engineering information disclosed herein are the property of Eberhard Manufacturing Company and are not to be disseminated or reproduced without express written consent. The drawing is loaned in confidence and then only for consideration of the matter disclosed herein. In accepting loan of this drawing, recipient agrees to keep it and the matter disclosed herein in confidence and not to use nor permit their use in any way detrimental to Eberhard Manufacturing Company, Division of the Eastern Company, 21944 Drake Road, Cleveland, Ohio 44149-9712 © 2017 EBERHARD MFG. CO.

REVISION HISTORY					
REV	DESCRIPTION	EN	DATE	REV BY	APVD BY
1	RELEASED	5818	9-1-17	FLP	MR



- NOTES:
 * 1. PARTS TO BE SHIPPED BULK, PACKED UNASSEMBLED.
 2. FINISH: ZINC, FC (24).

SCALE: HALF
 RECOMMENDED HOLE PATTERN LOCATION TO BE DRILLED IN DOOR BY CUSTOMER

CUSTOMER PRINT SHEET 1 OF 2

EBERHARD MANUFACTURING CO.
 DIVISION OF
THE EASTERN COMPANY
 CLEVELAND, OHIO 44149-9712

THIS DOCUMENT IS IN ACCORDANCE WITH ASME Y14.5-2009		DATE 9/1/2017
LINEAR MEASURE: INCH UNLESS OTHERWISE SPECIFIED TOLERANCES ARE AS FOLLOWS:		DR BY FLP
ANGLES:	± 2° ± 2°	SCALE FULL
2 PLACE DEC.:	± .03 ± .76	CHK BY
3 PLACE DEC.:	± .015 ± .38	
ALL HOLES:	± .005 ± .13	

NAME DOOR SAFETY RELEASE ASSEMBLY, LESS TUBE	
MATERIAL	PART NUMBER 2-1972-U