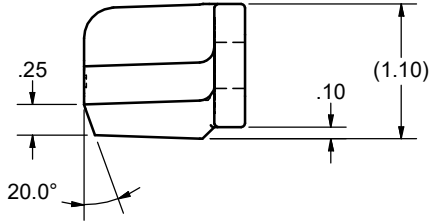
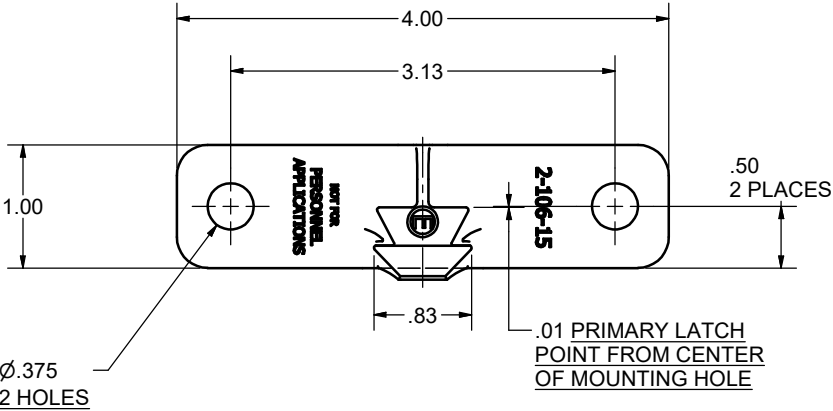
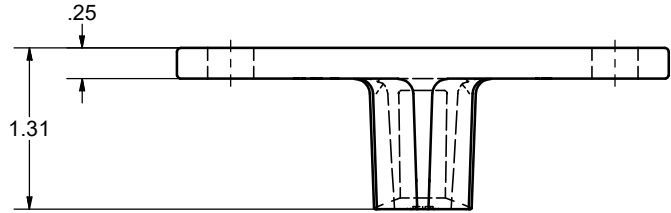
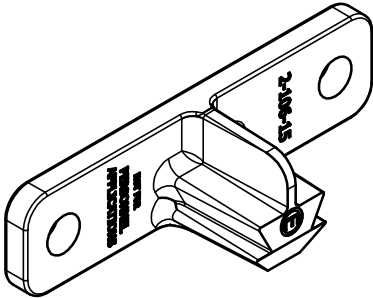


CONFIDENTIAL NOTICE: This drawing and the designs, specifications, and engineering information hereon are the property of Eberhard Manufacturing Company and are not to be disseminated or reproduced without express written consent. This drawing is loaned in confidence and then only for the consideration of the matter disclosed hereon. In accepting loan of this drawing, recipient agrees to keep it and the matter disclosed hereon in confidence and not to use or permit their use in any way detrimental to Eberhard Manufacturing Company, Division of The Eastern Company, 21944 Drake Road, Cleveland, Ohio, 44149-9712 © 2022 EBERHARD MFG. CO.

**WARNING**

THIS PRODUCT IS NOT CERTIFIED FOR
FMVSS 206 OR PERSONAL RESTRAINT APPLICATIONS

REVISION HISTORY					
REV	DESCRIPTION	EN	DATE	REV. BY	APVD. BY
-	REVISED, REDRAWN & CONVERTED TO 3-D	EN 6053	5-27-22	NTE	MR



- NOTES:**
1. FINISH: ZINC FLASH WITH YELLOW CHROMATE (67)

SUPERSEDES DRAWING 2-106-15 SHEET 2 OF 2 DATED 3-6-91

CUSTOMER PRINT
SHEET 1 OF 2

EBERHARD MANUFACTURING CO.
DIVISION OF
THE EASTERN COMPANY
CLEVELAND, OHIO 44149-9712

THIS DOCUMENT IS IN ACCORDANCE WITH ASME Y14.5-2009			NAME
LINEAR MEASUREMENT: INCH		DATE	
UNLESS OTHERWISE SPECIFIED TOLERANCES ARE AS FOLLOWS:		5/24/2022	
ANGLES:	IN	MM	DWN. BY
2 PLACE DEC.:	± .03	± .76	NTE
3 PLACE DEC.:	± .015	± .38	SCALE
ALL HOLES:	± .005	± .13	1 : 1
			CHK. BY
			MATERIAL
			ZA-12 (ASTM B669-84)
			PART NUMBER
			2-106-15