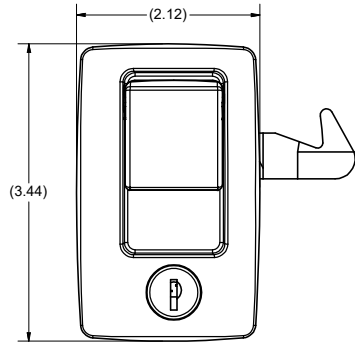


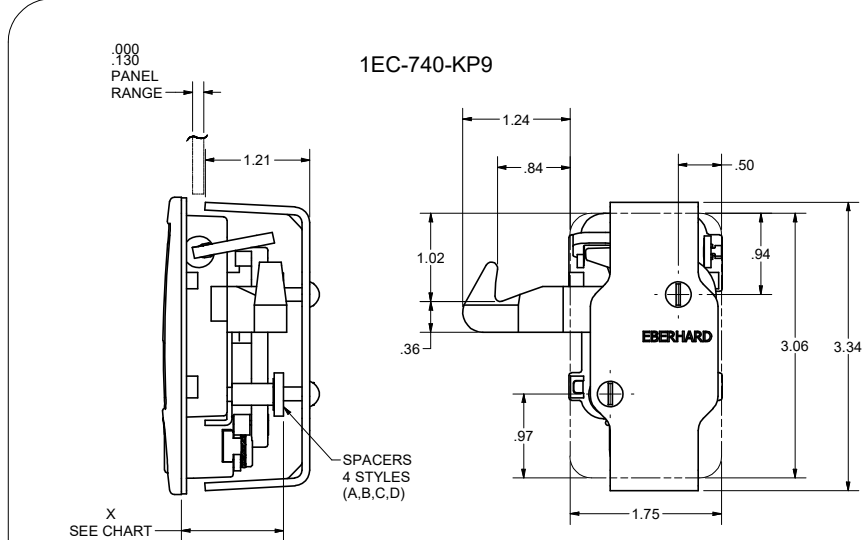
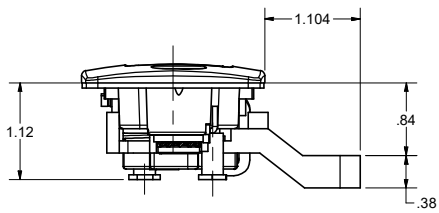
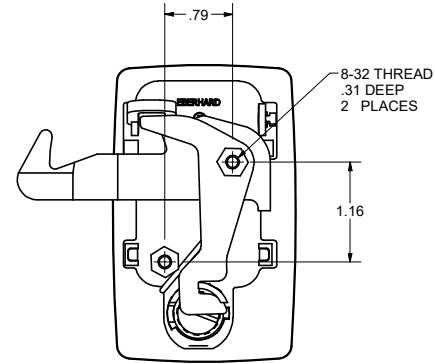
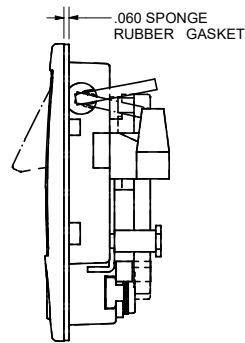
CONFIDENTIAL NOTICE: this drawing and the designs, specifications and engineering information disclosed hereon are the property of Eberhard Manufacturing Company and are not to be disseminated or reproduced without express written consent. The drawing is loaned in confidence and then only for consideration of the matter disclosed hereon. In accepting loan of this drawing, recipient agrees to keep it and the matter disclosed hereon in confidence and not to use nor permit their use in any way detrimental to Eberhard Manufacturing Company, Division of the Eastern Company, 21944 Drake Road, Cleveland, Ohio 44148-9712, © 2018 EBERHARD MFG. CO.

REVISION HISTORY					
REV	DESCRIPTION	EN	DATE	REV BY	APVD BY
1	CONVERTED TO 3D	5758	6-24-16	FLP	MR

SPACER	A	B	C	D
X DIM.	1.17	1.21	1.24	1.27



1EC-740-K



1EC-740-KP9

SUGGESTED OUTLINE OF CUTOUT AND MOUNTING BRACKET CLEARANCE.

NOTE: TORQUE MOUNTING BRACKET SCREWS TO 14 +/- 3 IN./LBS.

PART NUMBER	DESCRIPTION
1EC-740	ASSEMBLY WITH GASKET (NON-KEY LOCKING)
1EC-740-LP9	ASSEMBLY WITH GASKET, MTG. BRKT, SPACERS & SCREWS
1EC-740-K	ASSEMBLY WITH GASKET (KEY LOCKING)
1EC-740-LKP9	ASSEMBLY WITH GASKET, MTG. BRKT, SPACERS & SCREWS



NON LOCKING

eclipse SERIES

THIS DOCUMENT IS IN ACCORDANCE WITH ASME Y14.5-2009		DATE	NAME
LINEAR MEASURE: INCH		6/24/2016	FLP
UNLESS OTHERWISE SPECIFIED TOLERANCES ARE AS FOLLOWS:		DR BY	FLP
2 PLACE DEC:	± .03	SCALE	FULL
3 PLACE DEC:	± .015	CHECK BY	
ALL HOLES:	± .005		

PATENT NO. 5,046,340 CUSTOMER PRINT SHEET 1 OF 2	
EBERHARD MANUFACTURING CO. DIVISION OF THE EASTERN COMPANY CLEVELAND, OHIO 44148-9712	
PADDLE HANDLE ASSEMBLY WITH SLAM ACTION BOLT	
MATERIAL	PART NUMBER
	1EC-740

SUPERSEDES DRAWING 1EC-740 CHART SHEET 1 OF 2 DATED 9-3-91.

C:\Working_Folder\Archive\1EC-740 SH1.dwg