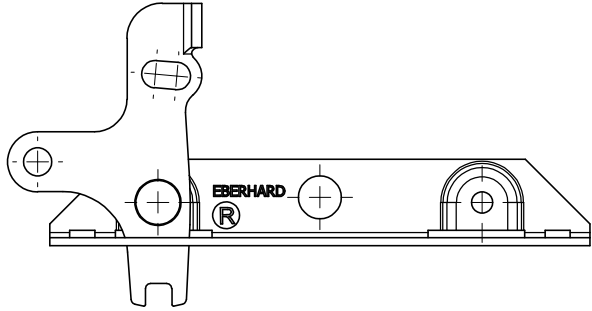
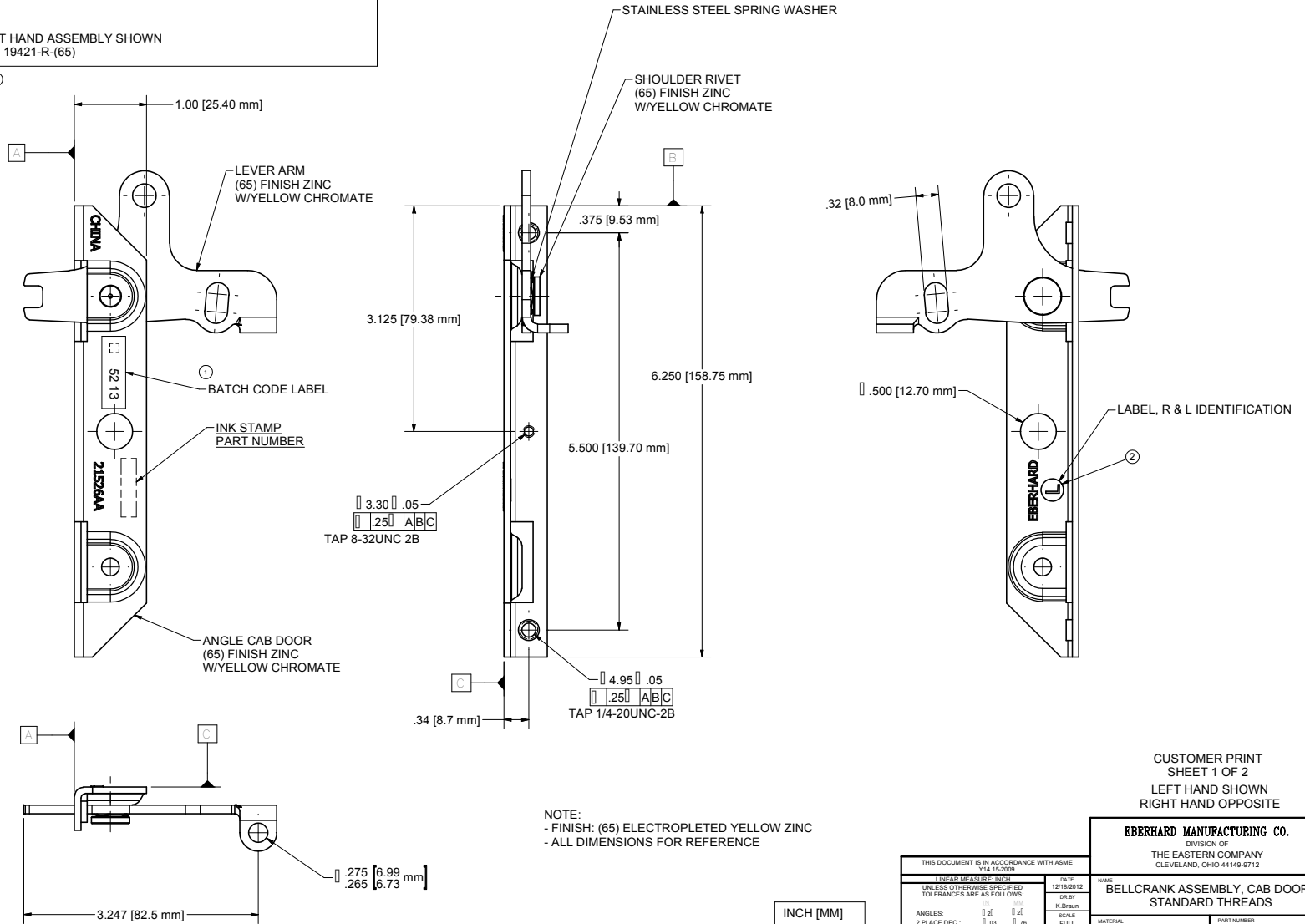


CONFIDENTIAL NOTICE: This drawing and the designs, specifications and engineering information disclosed hereon are the property of Eberhard Manufacturing Company and are not to be disseminated or reproduced without express written consent. The drawing is loaned in confidence and then only for consideration of the matter disclosed hereon. In accepting loan of this drawing, recipient agrees to keep it and the matter disclosed hereon in confidence and not to use nor permit their use in any way whatsoever by Eberhard Manufacturing Company, Division of the Eastern Company, 2194 Drake Road, Cleveland, Ohio 44149-9712, © 2013 EBERHARD MFG. CO.

REVISION HISTORY					
REV	DESCRIPTION	EN	DATE	REV BY	APVD BY
	RELEASE TO PRODUCTION // REF: PP10906-A	EN 5584	12/21/2012		
1	REVISED PART NUMBER, ADDED BATCH CODE LABEL	EN 5591	2/15/2013		
2	ADDED LABEL, R & L ADHESIVE BACKED	EN5741	2/26/2016	KAB	MR



BELL CRANK RIGHT HAND ASSEMBLY SHOWN
P/N 19421-R-(65)



NOTE:
- FINISH: (65) ELECTROPLATED YELLOW ZINC
- ALL DIMENSIONS FOR REFERENCE

CUSTOMER PRINT
SHEET 1 OF 2
LEFT HAND SHOWN
RIGHT HAND OPPOSITE

EBERHARD MANUFACTURING CO.
DIVISION OF
THE EASTERN COMPANY
CLEVELAND, OHIO 44149-9712

NAME: **BELLCRANK ASSEMBLY, CAB DOOR - STANDARD THREADS**

THIS DOCUMENT IS IN ACCORDANCE WITH ASME Y14.19-2009		DATE	12/18/2012
UNLESS OTHERWISE SPECIFIED TOLERANCES ARE AS FOLLOWS:		DR BY	K. BRADY
ANGLES:	±.25	SCALE	FULL
2 PLACE DEC.:	±.03	MATERIAL	
3 PLACE DEC.:	±.015	CHK BY	
ALL HOLES:	±.005		

PART NUMBER: **19421-R/L**

SUPERSEDES DRAWING K078-162RL DATED 12-18-12

INCH [MM]

C:\Working_Folder\Archive\Proj\1195XXX\194XXX\19421\19421-RL_SHT1.dwg