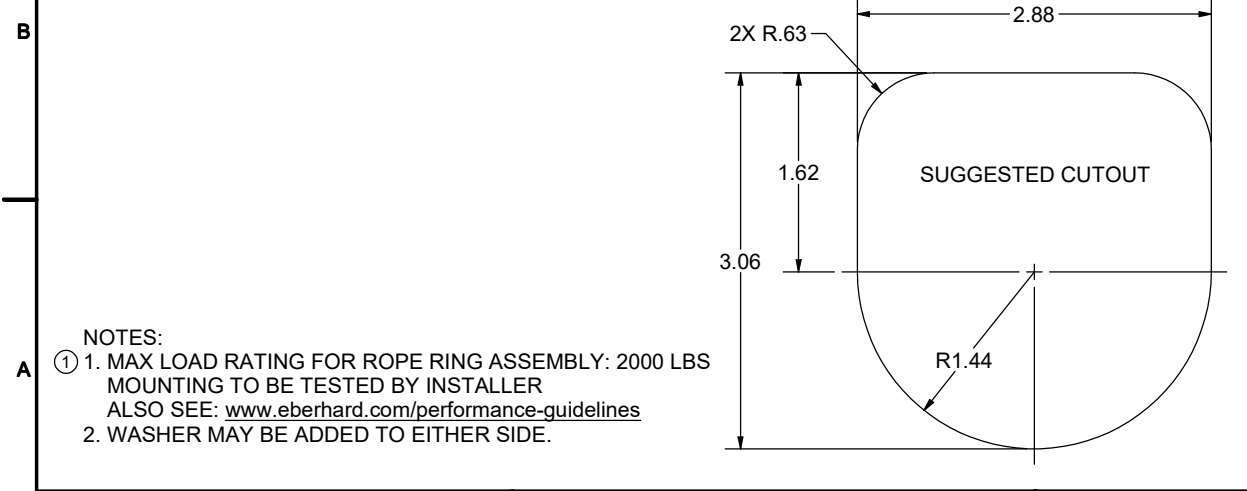
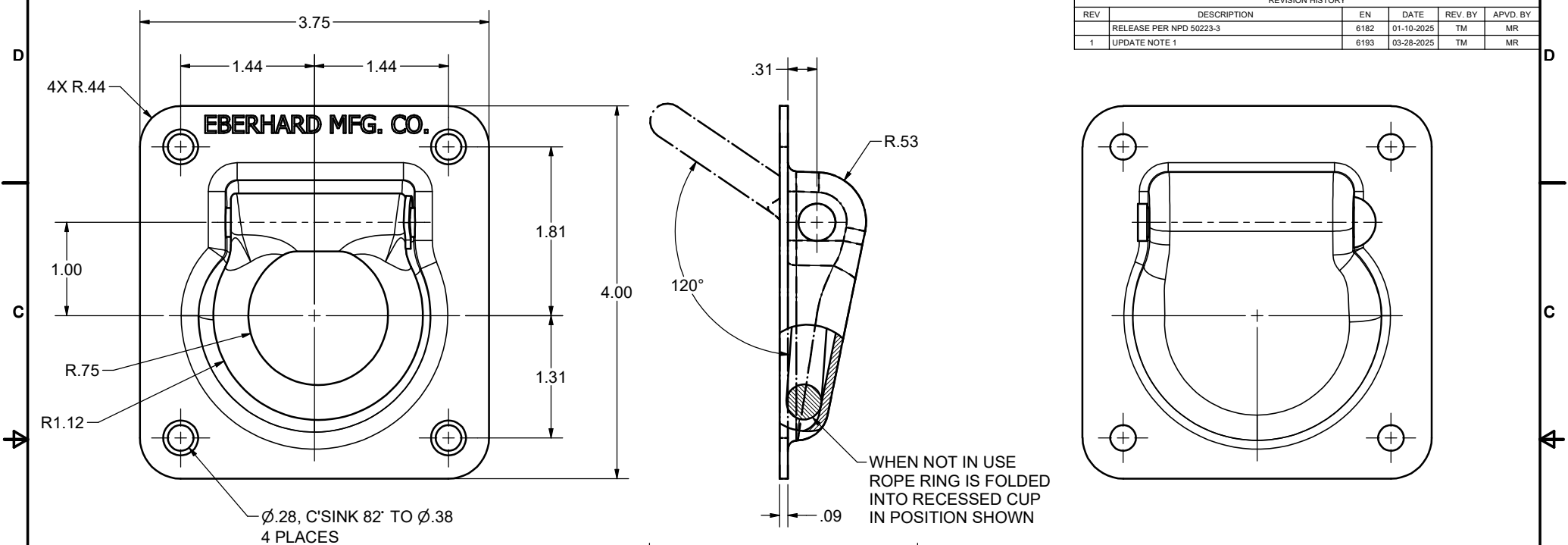


**CONFIDENTIAL NOTICE:** This drawing and the designs, specifications, and engineering information herein are the property of Eberhard Manufacturing Company and are not to be disseminated or reproduced without express written consent. This drawing is loaned in confidence and then only for the consideration of the matter disclosed herein. In accepting loan of this drawing, recipient agrees to keep it and the matter disclosed herein in confidence and not to use or permit their use in any way detrimental to Eberhard Manufacturing Company, Division of The Eastern Company, 21944 Drake Road, Cleveland, Ohio, 44149-9712 © 2024 EBERHARD MFG. CO.

REVISION HISTORY					
REV	DESCRIPTION	EN	DATE	REV. BY	APVD BY
	RELEASE PER NPD 50223-3	6182	01-10-2025	TM	MR
1	UPDATE NOTE 1	6193	03-28-2025	TM	MR



SCALE 1/2

- NOTES:
1. MAX LOAD RATING FOR ROPE RING ASSEMBLY: 2000 LBS MOUNTING TO BE TESTED BY INSTALLER  
ALSO SEE: [www.eberhard.com/performance-guidelines](http://www.eberhard.com/performance-guidelines)
  2. WASHER MAY BE ADDED TO EITHER SIDE.

THIS DOCUMENT IS IN ACCORDANCE WITH ASME Y14.5-2009		DATE		NAME	
LINEAR MEASUREMENT - INCH		1/7/2025		DWN. BY	
UNLESS OTHERWISE SPECIFIED TOLERANCES ARE AS FOLLOWS:				TM	
ANGLES:	± 2°	± 2°	SCALE	1:1	
2 PLACE DEC.:	± .03	± .76	CHK. BY	MATERIAL	
3 PLACE DEC.:	± .015	± .38	PART NUMBER		
ALL HOLES:	± .005	± .13	172C		

CUSTOMER PRINT

**EBERHARD MANUFACTURING CO.**  
DIVISION OF  
THE EASTERN COMPANY  
CLEVELAND, OHIO 44149-9712