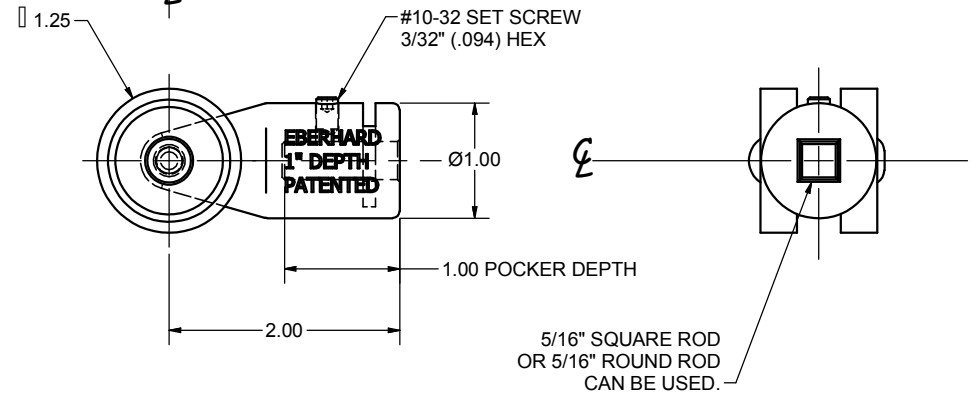
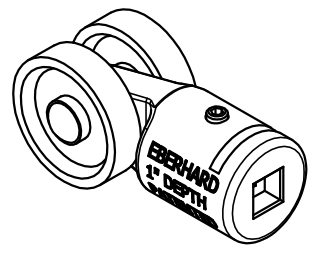
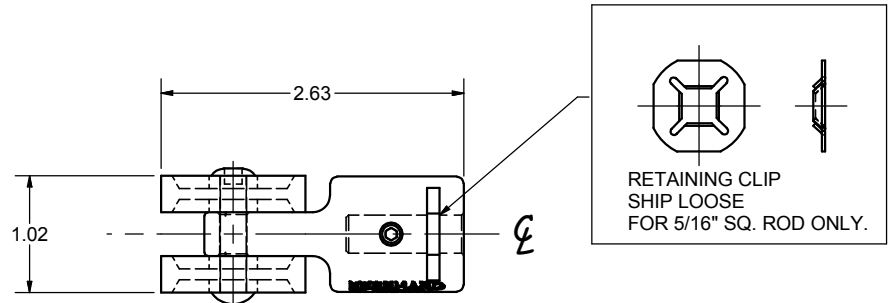


CONFIDENTIAL NOTICE: This drawing and the designs, specifications and engineering information disclosed hereon are the property of Eberhard Manufacturing Company and are not to be disseminated or reproduced without express written consent. The drawing is loaned in confidence and then only for consideration of the matter disclosed hereon. In accepting loan of this drawing, recipient agrees to keep it and the matter disclosed hereon in confidence and not to use nor permit their use in any way detrimental to Eberhard Manufacturing Company, Division of the Eastern Company, 21944 Drake Road, Cleveland, Ohio 44149-9712 © 2016 EBERHARD MFG. CO.

| REVISION HISTORY | | | | | |
|------------------|-----------------|------|---------|--------|---------|
| REV | DESCRIPTION | EN | DATE | REV BY | APVD BY |
| 1 | CONVERTED TO 3D | 5740 | 2-19-16 | FLP | MR |



5/16" SQUARE ROD OR 5/16" ROUND ROD CAN BE USED.

- NOTES:
 1. COMPONENTS TO BE SUPPLIED IN A SECURE POLY BAG.
 2. FINISH: ZINC, FC (25)

SUPSEDES DRAWING 16722-50PK SHEET 1 OF 2 DATED 4-8-03

PATENTED

| | |
|---|-----------------|
| THIS DOCUMENT IS IN ACCORDANCE WITH ASME Y14.5-2009 | |
| LINEAR MEASURE: INCH | DATE: 2/19/2016 |
| UNLESS OTHERWISE SPECIFIED TOLERANCES ARE AS FOLLOWS: | DR BY: FLP |
| INches: .03 | MM: .13 |
| ANGLES: .015 | SCALE: FULL |
| 2 PLACE DEC.: .03 | CHK BY: |
| 3 PLACE DEC.: .015 | |
| ALL HOLES: .005 | |

CUSTOMER PRINT SHEET 1 OF 2

| | |
|---|----------------------------------|
| EBERHARD MANUFACTURING CO. DIVISION OF THE EASTERN COMPANY CLEVELAND, OHIO 44149-9712 | |
| NAME SUB-ASSEMBLY ROD END, ADAPTER (WHEEL CONNECTOR) | |
| MATERIAL | PART NUMBER 16722-50PK |

C:\Working_Folder\Archive\FAS\TENERADAPTERS\16722-50PK_SH1.dwg