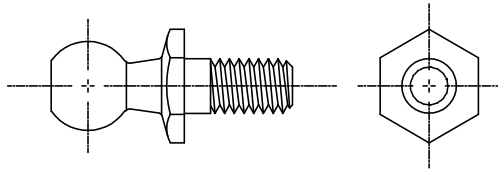


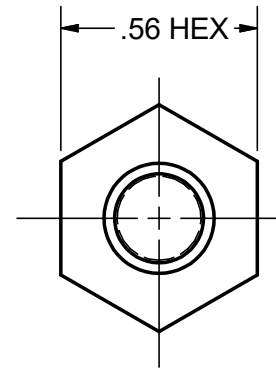
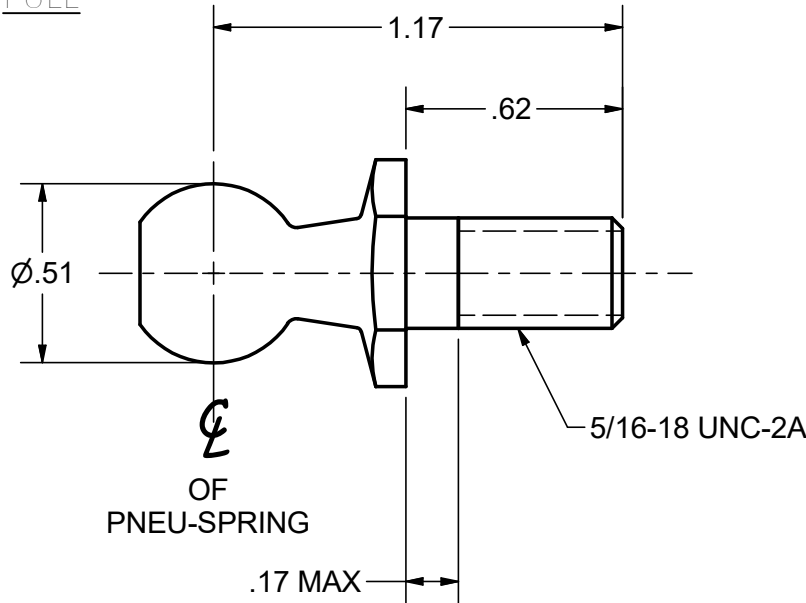
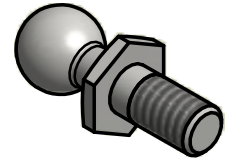
CONFIDENTIAL NOTICE: This drawing and the designs, specifications and engineering information disclosed herein are the property of Eberhard Manufacturing Company and are not to be disseminated or reproduced without express written consent. The drawing is loaned in confidence and then only for consideration of the matter disclosed herein. In accepting loan of this drawing, recipient agrees to keep it and the matter disclosed herein in confidence and not to use nor permit their use in any way detrimental to Eberhard Manufacturing Company, Division of the Eastern Company, 21944 Drake Road, Cleveland, Ohio 44149-9712 © 2012 EBERHARD MFG. CO.

NOTES:

- 1.) RECOMMENDED INSTALLATION TORQUE
12-15 FT*LB [16.3-20.3 N*m]
- ① 2.) USE SAFETY CLIP PART NUMBER 16302-SS-01.
- ① 3.) USE WITH EBB GAS SPRING SERIES.



SCALE: FULL



SUPERSEDES DRAWING 16301 DATED 8-24-94.

CUSTOMER PRINT
SHEET 1 OF 2

				LINEAR MEASURE: INCH		DATE 11/16/2012		EBERHARD MANUFACTURING CO. DIVISION OF THE EASTERN COMPANY CLEVELAND, OHIO 44149-9712		NAME BALL STUD 13 mm BALL			
				UNLESS OTHERWISE SPECIFIED TOLERANCES ARE AS FOLLOWS:		DR. BY FLP				MATERIAL CARBON STEEL		PART NUMBER 16301	
				ANGLES: IN MM		SCALE 2x				CHECK BY THIS DOCUMENT IS IN ACCORDANCE WITH ASME Y14.5-2009			
1	ADDED NOTE #2 & #3	5743	03/11/2016	2 PLACE DEC.:	± .03	± .76							
	CONVERTED TO 3D	5580	11-16-12	3 PLACE DEC.:	± .015	± .38							
REV	DESCRIPTION	EN	DATE	ALL HOLES:	± .005	± .13							