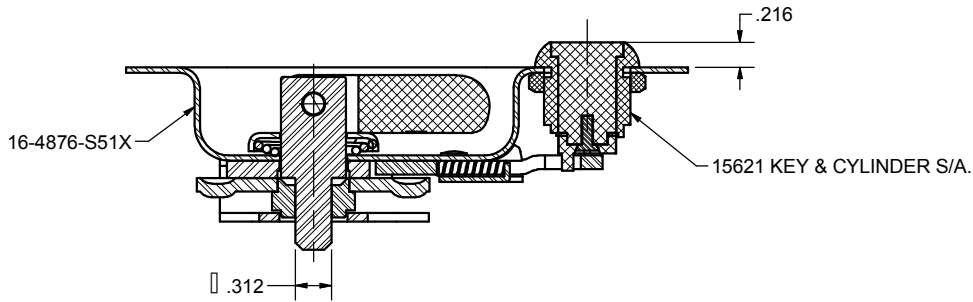
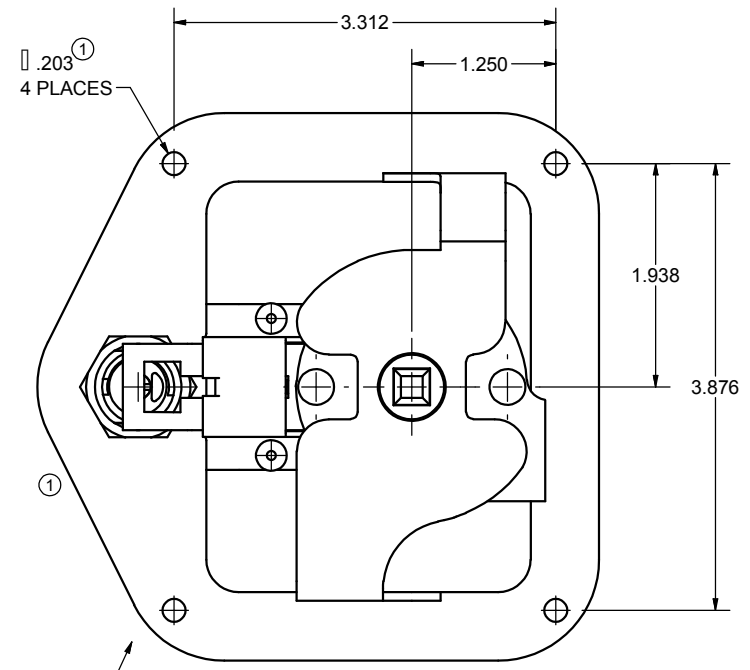
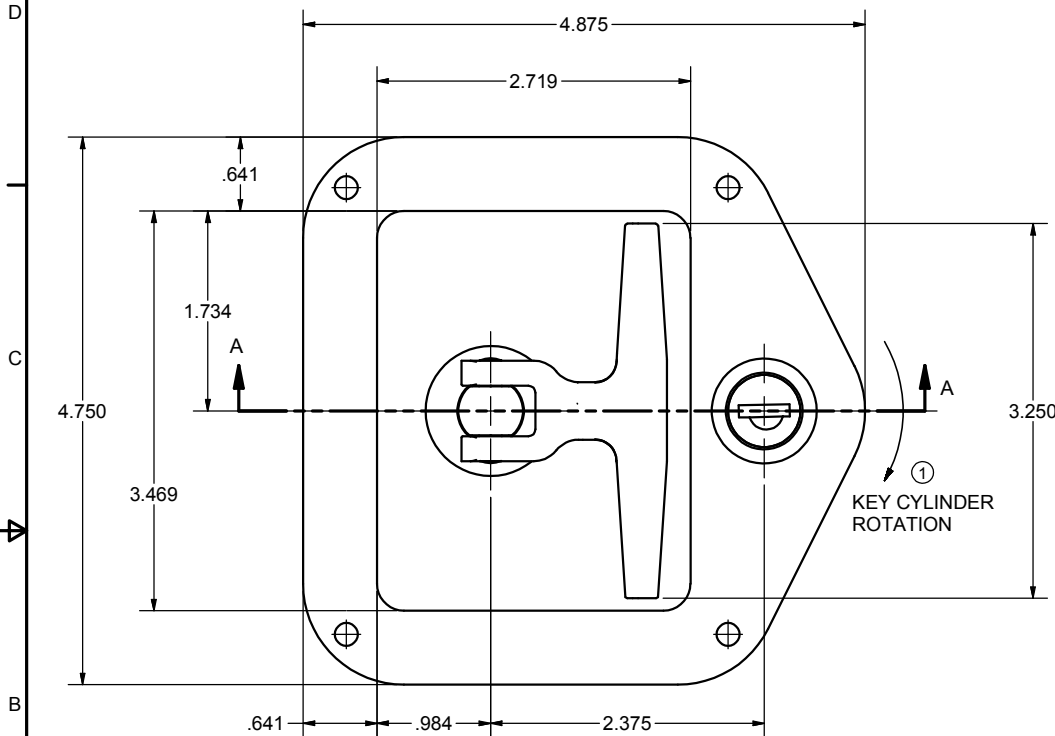


CONFIDENTIAL NOTICE: This drawing and the designs, specifications and engineering information disclosed hereon are the property of Eberhard Manufacturing Company and are not to be disseminated or reproduced without express written consent. The drawing is loaned in confidence and then only for consideration of the matter disclosed hereon. In accepting loan of this drawing, recipient agrees to keep it and the matter disclosed hereon in confidence and not to use nor permit their use in any way detrimental to Eberhard Manufacturing Company, Division of the Eastern Company, 21944 Drake Road, Cleveland, Ohio 44149-9712 © 2014 EBERHARD MFG. CO.

REVISION HISTORY					
REV	DESCRIPTION	EN	DATE	REV BY	APVD BY
	REVISED, REDRAWN AND CONVERTED TO 3D	5690	2-8-13		
1	ADDED KEY CYLINDER ROTATION, .203 WAS .20, REVISED VIEW	5681	11-21-14	FLP	MR



SECTION A-A
SCALE 1 : 1

SUPERSEDES DRAWING 16-4876-SS52 DATED 8-1-08.

THIS DOCUMENT IS IN ACCORDANCE WITH ASME Y14.15-2009	
LINEAR MEASURE: INCH	DATE: 2/8/2013
UNLESS OTHERWISE SPECIFIED TOLERANCES ARE AS FOLLOWS:	DR BY: FLP
ANGLES: $\pm .2$ $\pm .2$	SCALE: FULL
2 PLACE DEC.: $\pm .03$ $\pm .076$	CHK BY: FLP
3 PLACE DEC.: $\pm .015$ $\pm .038$	
ALL HOLES: $\pm .005$ $\pm .13$	

EBERHARD MANUFACTURING CO. DIVISION OF THE EASTERN COMPANY CLEVELAND, OHIO 44149-9712	
RECESSED FOLDING HANDLE SUB-ASSEMBLY W/ KEY CYLINDER	
MATERIAL: -----	PART NUMBER: 16-4876-SS52

C:\Working_Folder\Archive\Pro4\48XX\16-4876-SS52.idw