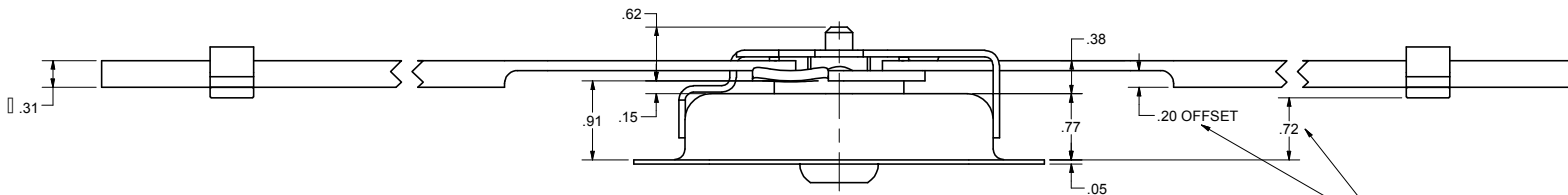
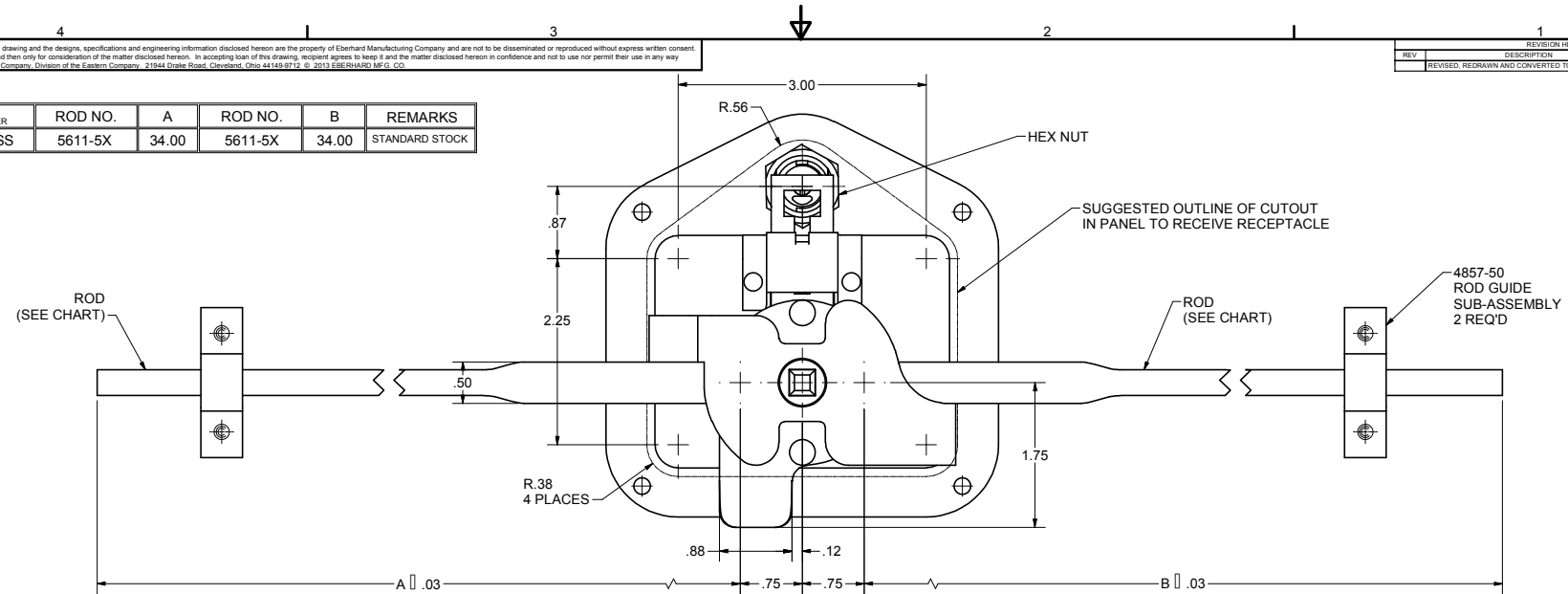


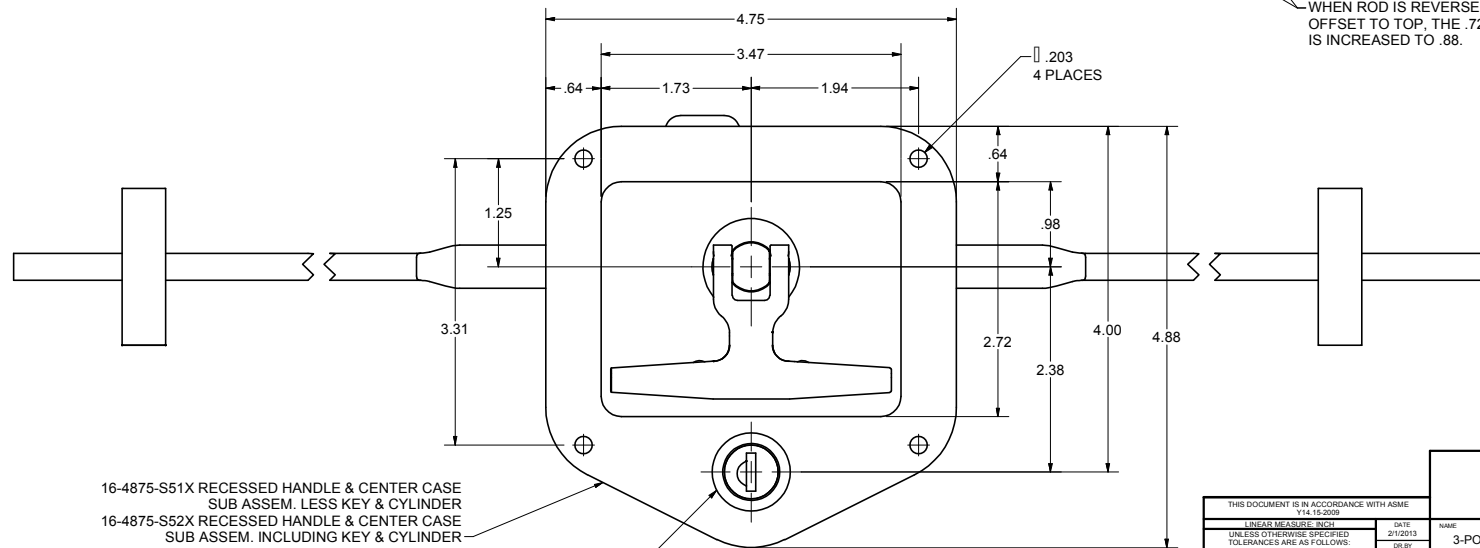
CONFIDENTIAL NOTICE: This drawing and the designs, specifications and engineering information disclosed hereon are the property of Eberhard Manufacturing Company and are not to be disseminated or reproduced without express written consent. The drawing is loaned in confidence and then only for consideration of the matter disclosed hereon. In accepting loan of this drawing, recipient agrees to keep it and the matter disclosed hereon in confidence and not to use nor permit their use in any way detrimental to Eberhard Manufacturing Company, Division of the Eastern Company, 2184 Drake Road, Cleveland, Ohio 44148-9712. © 2013 EBERHARD MFG. CO.

REVISION HISTORY			
REV	DESCRIPTION	EN	DATE
1	REVISED, REDRAWN AND CONVERTED TO 3D	5889	2-1-13

COMPLETE LOCK NUMBER	ROD NO.	A	ROD NO.	B	REMARKS
16-4875-SS	5611-5X	34.00	5611-5X	34.00	STANDARD STOCK



WHEN ROD IS REVERSED, BRINGING OFFSET TO TOP, THE .72 DIMENSION IS INCREASED TO .88.



16-4875-S51X RECESSED HANDLE & CENTER CASE SUB ASSEM. LESS KEY & CYLINDER
 16-4875-S52X RECESSED HANDLE & CENTER CASE SUB ASSEM. INCLUDING KEY & CYLINDER

THIS DOCUMENT IS IN ACCORDANCE WITH ASME Y14.19-2009	
LINEAR MEASURE INCH	DATE 2/1/2013
UNLESS OTHERWISE SPECIFIED TOLERANCES ARE AS FOLLOWS:	DR BY RLP
ANGLES: .20 .20	SCALE FULL
2 PLACE DEC: .05 .76	CHECK BY
3 PLACE DEC: .015 .38	
ALL HOLES: .005 .13	

EBERHARD MANUFACTURING CO.	
DIVISION OF THE EASTERN COMPANY CLEVELAND, OHIO 44148-9712	
3-POINT DEAD BOLT LOCK WITH FOLDING RECESSED HANDLE AND KEY	
MATERIAL	PART NUMBER
-----	16-4875-SS

SUPERSEDES DRAWING 16-4875-SS DATED 11-1-96