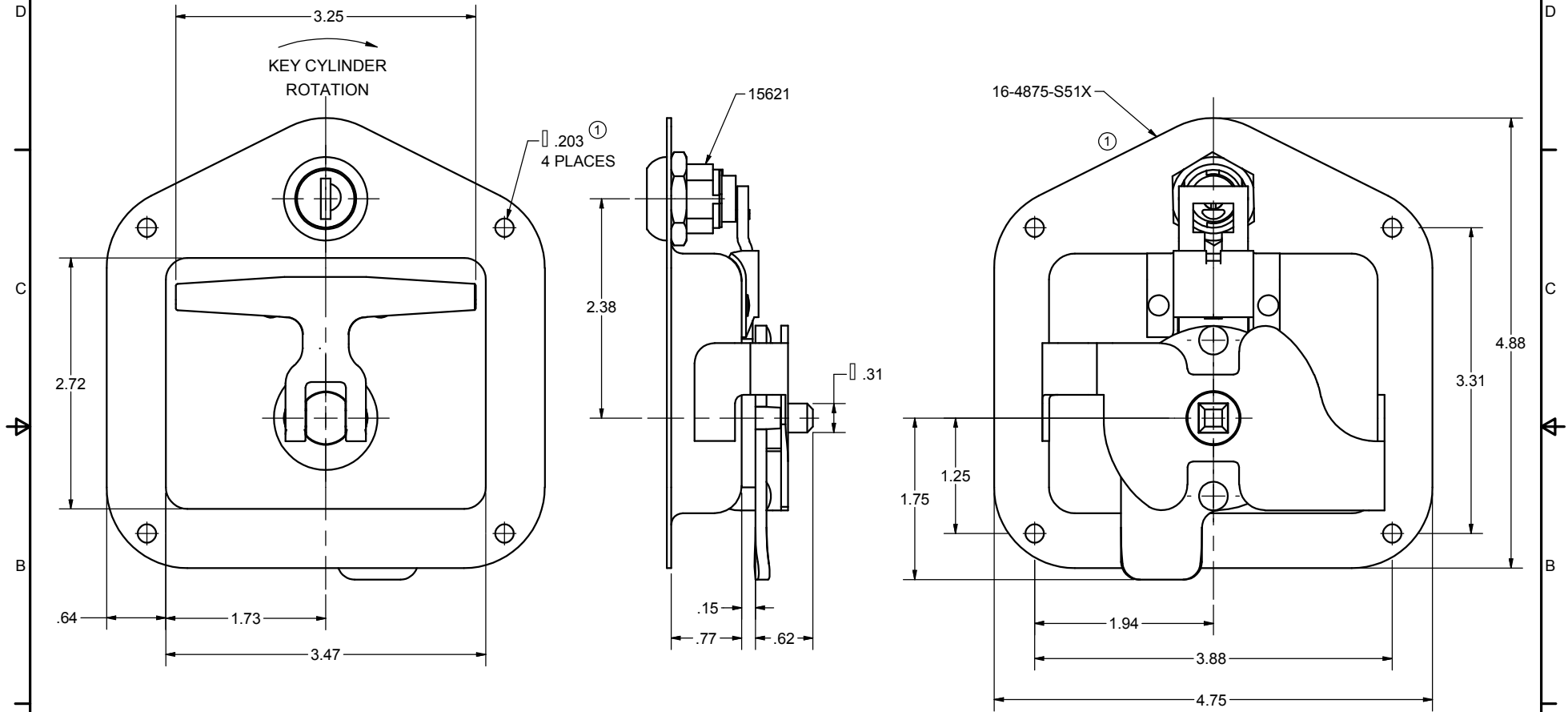


**CONFIDENTIAL NOTICE:** This drawing and the designs, specifications and engineering information disclosed hereon are the property of Eberhard Manufacturing Company and are not to be disseminated or reproduced without express written consent. The drawing is loaned in confidence and then only for consideration of the matter disclosed hereon. In accepting loan of this drawing, recipient agrees to keep it and the matter disclosed hereon in confidence and not to use nor permit their use in any way detrimental to Eberhard Manufacturing Company, Division of the Eastern Company, 21944 Drake Road, Cleveland, Ohio 44149-9712 © 2014 EBERHARD MFG. CO.

| REVISION HISTORY |                                      |      |          |        |         |
|------------------|--------------------------------------|------|----------|--------|---------|
| REV              | DESCRIPTION                          | EN   | DATE     | REV BY | APVD BY |
|                  | REVISED, REDRAWN AND CONVERTED TO 3D | 5589 | 2-1-13   |        |         |
| 1                | REVISED VIEW ...203 WAS .20          | 5681 | 11-21-14 | FLP    | MR      |



SUPERSEDES DRAWING 16-4875-S52X DATED 8-1-08

|   |              |        |          |
|---|--------------|--------|----------|
| THIS DOCUMENT IS IN ACCORDANCE WITH ASME Y14.15-2009  |              | DATE   | 2/1/2013 |
| LINEAR MEASURE: INCH                                  |              | DR BY  | FLP      |
| UNLESS OTHERWISE SPECIFIED TOLERANCES ARE AS FOLLOWS: |              | SCALE  | FULL     |
| ANGLES:   | ∠ 2∠ ∠ 2∠    | CHK BY |          |
| 2 PLACE DEC:  | ∠ .03 ∠ .76  |        |          |
| 3 PLACE DEC:  | ∠ .015 ∠ .38 |        |          |
| ALL HOLES:  | ∠ .005 ∠ .13 |        |          |

|  |   |
|--|---|
| <b>EBERHARD MANUFACTURING CO.</b><br>DIVISION OF<br><b>THE EASTERN COMPANY</b><br>CLEVELAND, OHIO 44149-9712 |   |
| NAME   | <b>RECESSED FOLDING HANDLE<br/>SUB-ASSEMBLY</b> |
| MATERIAL   | -----   |
| PART NUMBER  | <b>16-4875-S52X</b>                             |