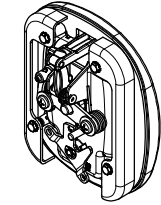
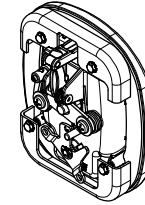
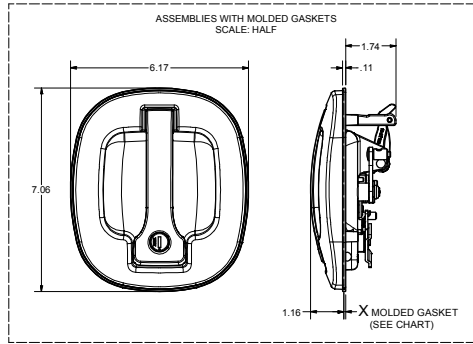
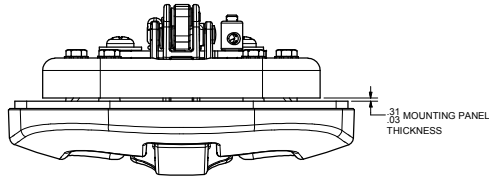
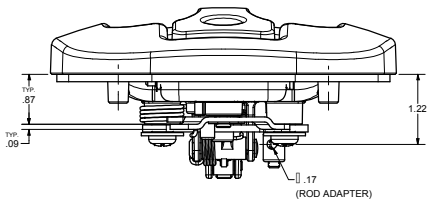
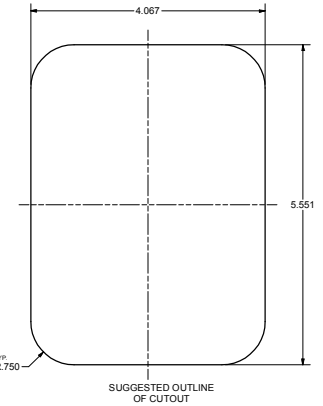
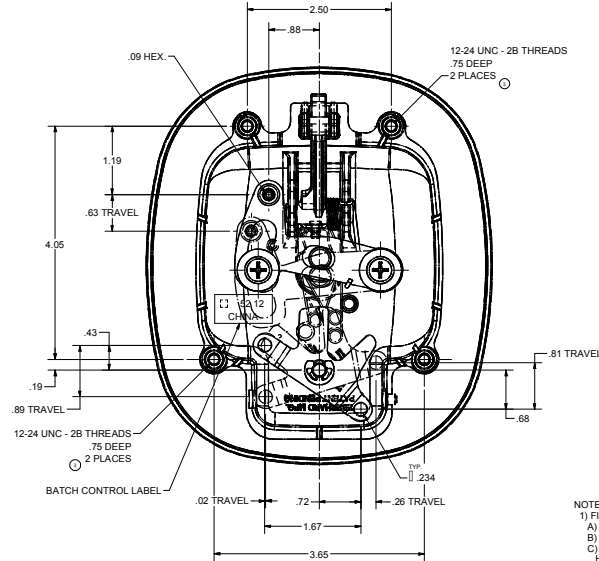
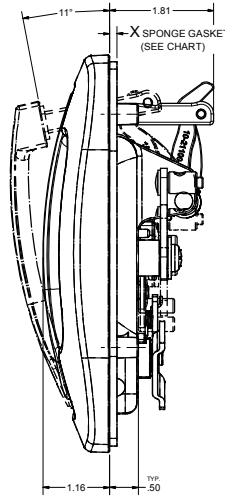
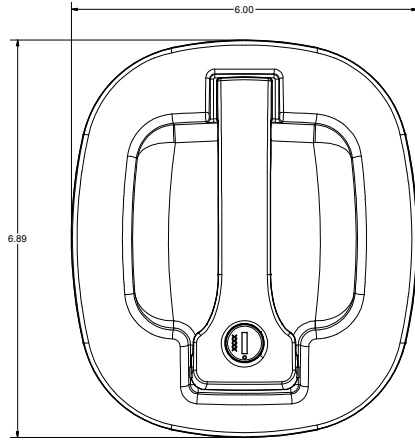


CONFIDENTIAL NOTICE: This drawing and the design, specifications and engineering information disclosed herein are the property of Eberhard Manufacturing Company and are not to be disseminated or reproduced without express written consent of Eberhard Manufacturing Company. This drawing is provided for your information only. It is not intended to be used for any other purpose without the express written consent of Eberhard Manufacturing Company.

REVISION HISTORY					
REV	DESCRIPTION	EN	DATE	REV. BY	APVD. BY
0	RELEASED, WAS 17-M857B-KULK-SHEET 1 OF 2	EN 6602	5/3/2013		
1	REVISED PART NUMBER, NAME, CHART, NOTE, REMOVED KEY, DIMENSION & NOTE, ADDED NOTE	EN 5659	5/30/2014	SA	LSW
2	ADDED DOW CORNING GREASE NOTE	EN 5872	09/19/2014	MM	LSW
3	REVISED DIMENSIONS	EN 5629	11/7/2014	SA	LSW



NOTE: MOUNTING BRACKETS AND (4) MOUNTING SCREWS SHIPPED LOOSE IN A SECURED POLY BAG.



PART NUMBER	FINISH	No. OF KEYS INCLUDED	X DIM.	GASKET TYPE	MOUNTING HARDWARE
15A-21100-XXXALK	03, 30, 31, 42, 35	0	.13	30 DUROMETER EPDM CLOSED CELL SPONGE	21100-MHPK
15A-21100-XXXBLK	03, 30, 31, 42, 35	0	.41	50 DUROMETER ETHYLENE VINYL ACETATE SPONGE	21100-MHPK
15A-21100-XXXCLK	03, 30, 31, 42, 35	0	.06	TPU - MOLDED	21100-MHPK
15A-21100LB-XXXALK	03, 30, 31, 42, 35	0	.13	30 DUROMETER EPDM CLOSED CELL SPONGE	21100LB-MHPK
15A-21100LB-XXXBLK	03, 30, 31, 42, 35	0	.41	50 DUROMETER ETHYLENE VINYL ACETATE SPONGE	21100LB-MHPK
15A-21100LB-XXXCLK	03, 30, 31, 42, 35	0	.06	TPU - MOLDED	21100LB-MHPK

KEYS PURCHASED SEPARATELY, P/N: XXX-21100-DB30

KEY NUMBER

- NOTES:
- FINISH AVAILABLE:
A) CHROME RECEPTACLE & HANDLE, FC (03)
B) BLACK POWDER (POLY SEMI-GLOSS) RECEPTACLE & HANDLE, FC (30)
C) BLACK POWDER (POLY SEMI-GLOSS) RECEPTACLE & CHROME HANDLE, FC (31)
D) BLACK POWDER (TEXTURED) RECEPTACLE & HANDLE, FC (42)
E) BLACK POWDER (TEXTURED) RECEPTACLE & CHROME HANDLE, FC (35)
 - LUBRIFLATE AERO OR EQUIVALENT GREASE USED ON ALL MOVING COMPONENTS AT CONTACT POINTS.
 - MOUNTING BRACKETS AND MOUNTING SCREWS ARE FURNISHED WITH ZINC W/YELLOW CONVERTER FINISH.
 - MAXIMUM TORQUE FOR MOUNTING SCREWS: 35/40 IN. LBS.
 - MAXIMUM TORQUE FOR HEX HEAD SET SCREW IN ROD ADAPTER: 10 IN. LBS.
 - AVAILABLE KEY NOS: J201 THRU J210, J223, J235 & J236. EXAMPLE ORDER P/N: 15A-21100-201ALK-03

KEY LOCKING/BRACKET STYLE
KEY NUMBER
GASKET TYPE
FINISH CODE
LESS KEY
CUSTOMER PRINT SHEET 1 OF 3

EBERHARD MANUFACTURING CO.
DIVISION OF THE EASTERN COMPANY
CLEVELAND, OHIO 44116-8712

LOCKING HANDLE ASSEMBLY - LESS KEY

15A-21100-ALK

C:\Working_Files\Archive\Files\21100\15A-21100-ALK.CHART SH1.DWG