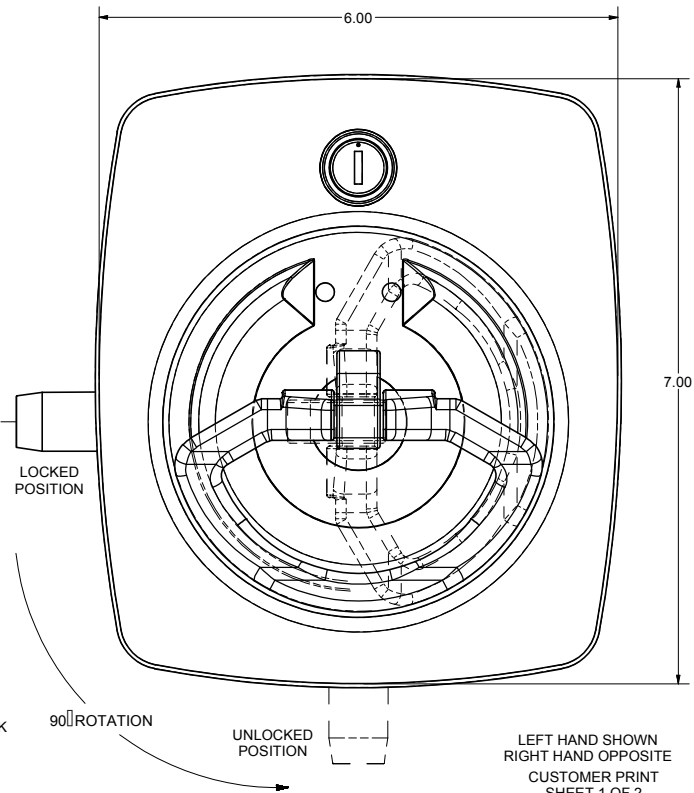
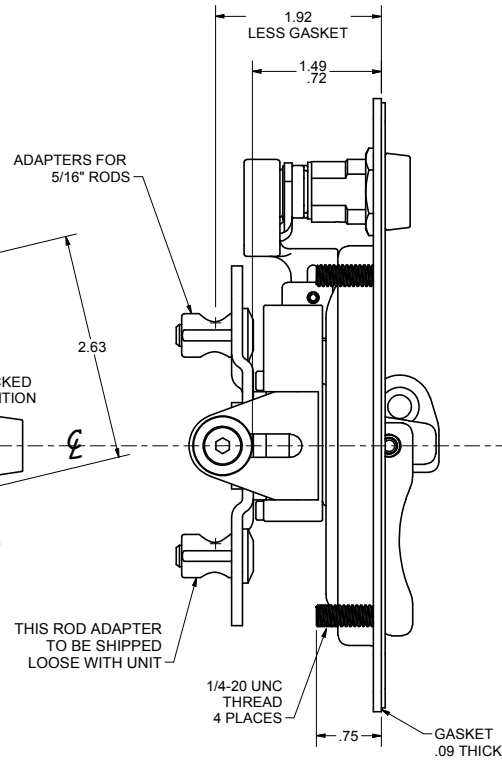
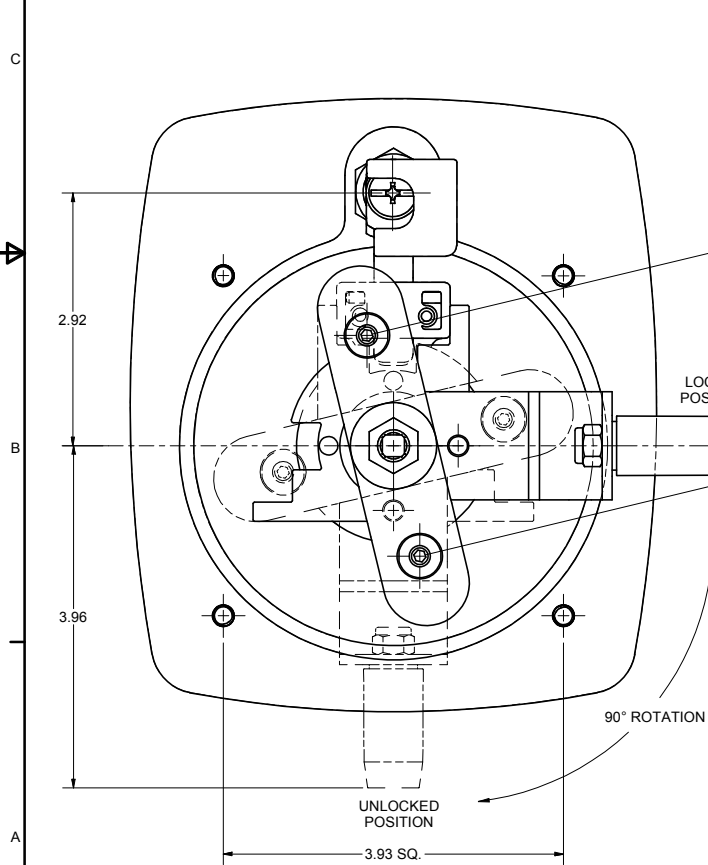
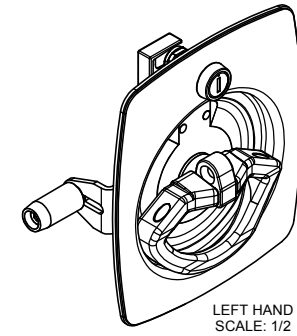
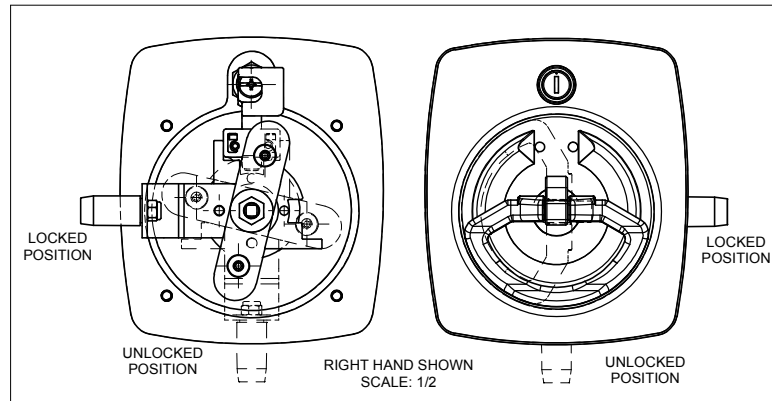
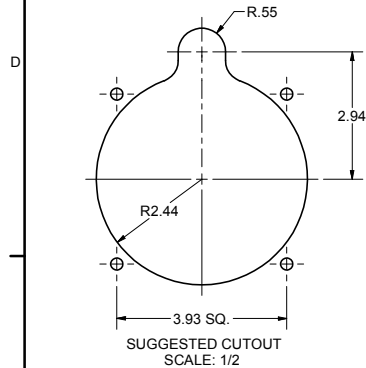
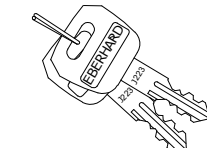


CONFIDENTIAL NOTICE: This drawing and the designs, specifications and engineering information disclosed herein are the property of Eberhard Manufacturing Company and are not to be disseminated or reproduced without express written consent. The drawing is loaned in confidence and then only for consideration of the matter disclosed herein. In accordance with this drawing, recipient agrees to keep it and the matter disclosed herein in confidence and not to use nor permit their use in any way. Eberhard Manufacturing Company, Division of The Eastern Company, 21944 Drake Road, Cleveland, Ohio 44149-9712. © 2015 EBERHARD MFG. CO.

REVISION HISTORY					
REV	DESCRIPTION	EN	DATE	REV BY	APVD BY
1	RELEASED, REF PP11440-C	575	1-15-16	FLP	MR



NOTES:
1. KEYS AND ROD ADAPTER SHIPPED IN SUCURED POLY BAG.
2. MAX FASTENING TORQUE FOR MOUNTING STUDS: 43 IN-LBS.



2 OVER-MOLDED KEYS SUPPLIED
KEY SERIES: J201

THIS DOCUMENT IS IN ACCORDANCE WITH ASME Y14.15-2009					
LINEAR MEASURE: INCH			DATE: 1/15/2016		
UNLESS OTHERWISE SPECIFIED TOLERANCES ARE AS FOLLOWS:			NAME: D-RING 3-POINT SUB ASSEMBLY LOCKING, COMPRESSION WITH LOCK AT TOP		
ANGLES:	0.25	0.25	SCALE:	FLP	
2 PLACE DEC:	0.03	0.75	MATERIAL:		
3 PLACE DEC:	0.015	0.38	CHK BY:		
ALL HOLES:	0.005	0.13			
EBERHARD MANUFACTURING CO.				PART NUMBER: 13-90320-SSBPKL/R	
DIVISION OF THE EASTERN COMPANY CLEVELAND, OHIO 44149-9712					