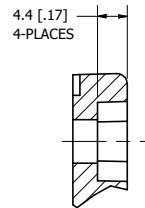
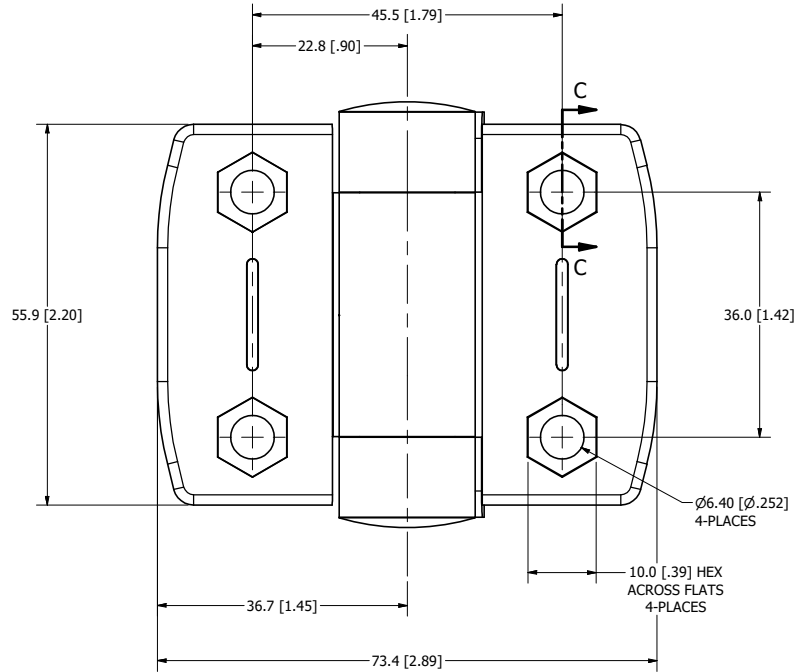
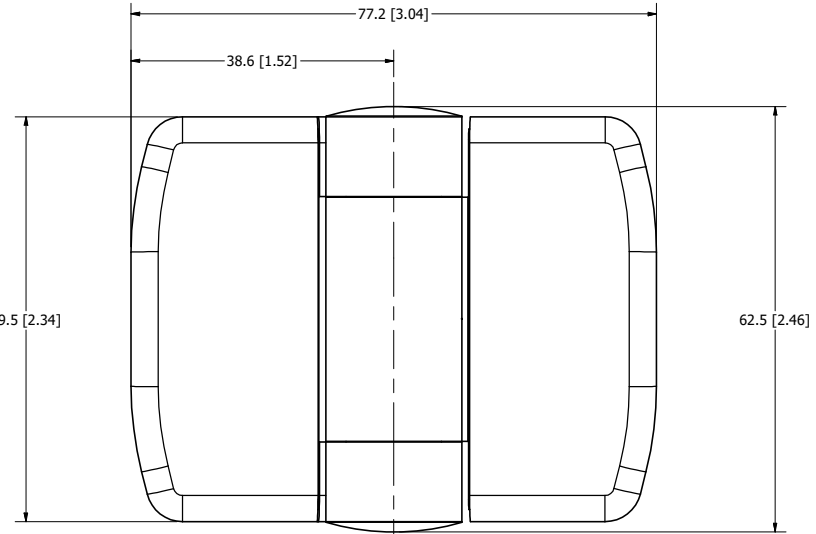
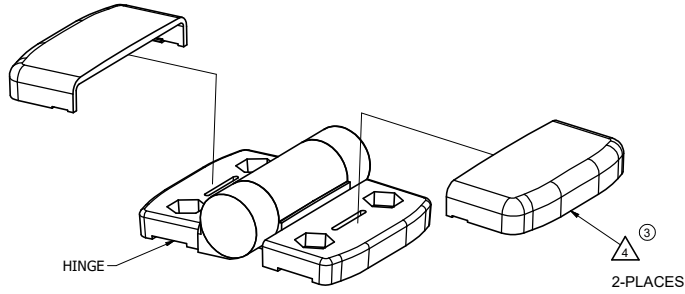
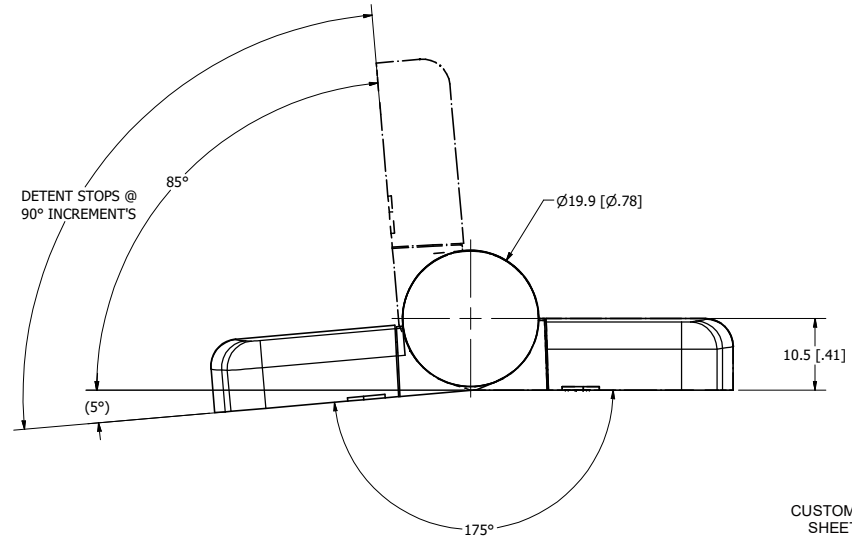


**CONFIDENTIAL NOTICE:** This drawing and the designs, specifications and engineering information disclosed hereon are the property of Eberhard Manufacturing Company and are not to be disseminated or reproduced without express written consent. The drawing is handed in confidence and then only for consideration of the matter disclosed hereon. In accepting this drawing, recipient agrees to keep it and the matter disclosed hereon in confidence and not to use nor permit their use in any way detrimental to Eberhard Manufacturing Company, Division of the Eastern Company, 21944 Drake Road, Cleveland, Ohio 44149-9772. © 2017 EBERHARD MFG. CO.

REVISION HISTORY					
REV	DESCRIPTION	EN	DATE	REV. BY	APVD. BY
	RELEASE TO PRODUCTION/ REF:PP12072 was M12072-236	5819	9/8/2017	KAB	MR
1	HINGE ANGLE CHANGES WAS 180/90DEG NOW 175/85DEG. ADDED VIEW WITH COVERS AND DIMENSIONS.	5827	11/3/2017	KAB	MR
2	REVISED TOLERANCE BLOCK WITH SPECIAL TOLERANCES	5831	12/8/2017	KAB	MR
3	HINGE AND COVERS TO BE SHIPPED TOGETHER IN ONE POLY BAG PER CUSTOMER REQUEST REFER TO PP12072-G	5958	7/10/2020	KAB	MR



SECTION C-C  
SCALE 2 : 1



③ NOTE:

- 1) MATERIAL: PA 6 GF 30 NYLON, BLACK  
MATERIAL PIN: STAINLESS STEEL
- 2) FINISH: (MB) MATTE BLACK, TEXTURE MT-1055
- 3) PART IS RoHS COMPLIANT
- △ HINGE & COVERS TO BE SHIPPED TOGETHER IN SAME POLY-BAG

CUSTOMER PRINT  
SHEET 1 OF 2

<b>SPECIAL TOLERANCES</b> <small>LINEAR MEASURE: mm(INCH)</small> UNLESS OTHERWISE SPECIFIED TOLERANCES ARE AS PER DIN-ISO 2768-M		DATE: 9/8/2017 CDR: K/Braun SCALE: 2:1 CHK BY: MR	NAME: <b>SYSTEM HINGE 40, NON-DETACHABLE</b> MATERIAL: SEE NOTE PART NUMBER: 12326
---	--	--	---

**EBERHARD MANUFACTURING CO.**  
DIVISION OF  
THE EASTERN COMPANY  
CLEVELAND, OHIO 44149-9712