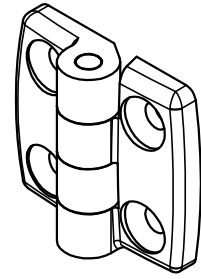
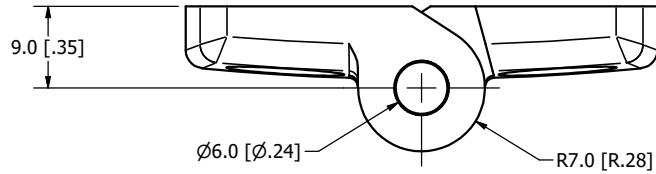
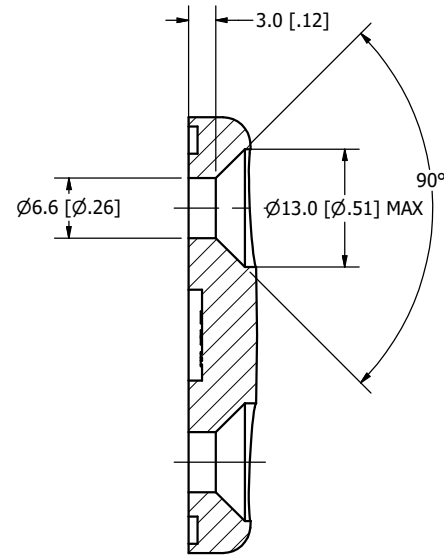


CONFIDENTIAL NOTICE: This drawing and the designs, specifications and engineering information disclosed hereon are the property of Eberhard Manufacturing Company and are not to be disseminated or reproduced without express written consent. The drawing is loaned in confidence and then only for consideration of the matter disclosed hereon. In accepting loan of this drawing, recipient agrees to keep it and the matter disclosed hereon in confidence and not to use nor permit their use in any way detrimental to Eberhard Manufacturing Company, Division of the Eastern Company, 21944 Drake Road, Cleveland, Ohio 44149-9712. © 2017 EBERHARD MFG. CO.

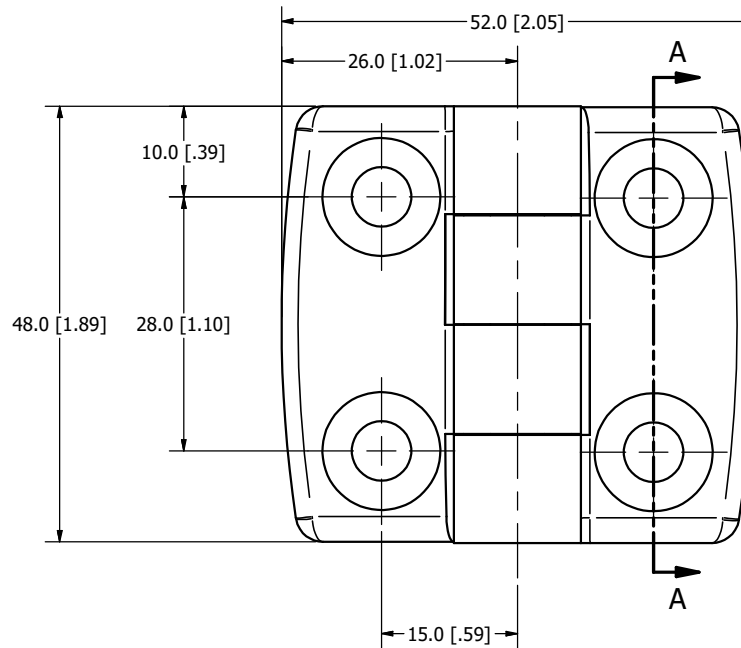
REVISION HISTORY					
REV	DESCRIPTION	EN	DATE	REV. BY	APVD. BY
1	RELEASE TO PRODUCTION/ REF:PP12072 WAS M12072-98 SH1	5819	9/8/2017	KAB	MR
1	ADDED PIN MATERIAL TO NOTES	5827	11/3/2017	KAB	MR
2	REVISED TOLERANCE BLOCK WITH SPECIAL TOLERANCE	5831	12/8/2017	KAB	MR



ISO VIEW
SCALE 1 : 1



SECTION A-A
SCALE 2 : 1
HOLE DIMENSIONS TYP.



- NOTE: ①
- 1) MATERIAL: PA 6 GF 30 NYLON, BLACK
MATERIAL PIN: STAINLESS STEEL
 - 2) FINISH: (MB) MATTE BLACK, TEXTURE MT-1055
 - 3) PART IS RoHS COMPLIANT

SPECIAL TOLERANCES	
LINEAR MEASURE: METRIC (INCH)	DATE
UNLESS OTHERWISE SPECIFIED TOLERANCES ARE AS PER DIN- ISO 2768-M	9/7/2017
	DR. BY K Braun
	SCALE 2:1
	CHK. BY MR

EBERHARD MANUFACTURING CO. DIVISION OF THE EASTERN COMPANY CLEVELAND, OHIO 44149-9712	
NAME HINGE PLASTIC, 10 & 25 SERIES 4 HOLE STANDARD	
MATERIAL	PART NUMBER 12098

CUSTOMER PRINT
SHEET 1 OF 2