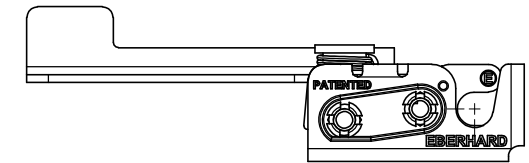
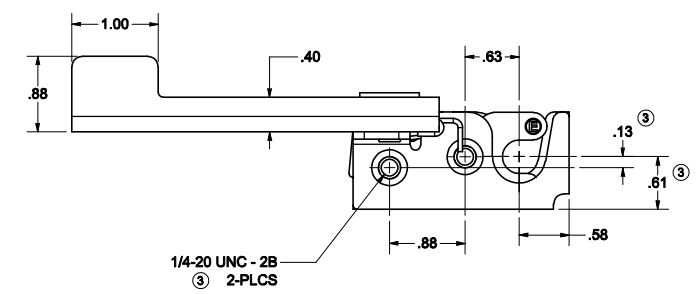
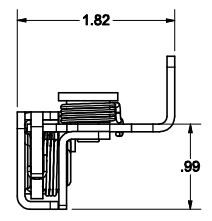
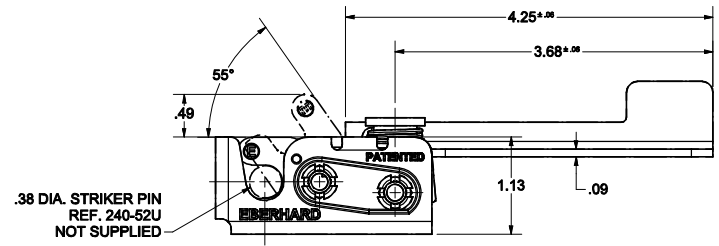
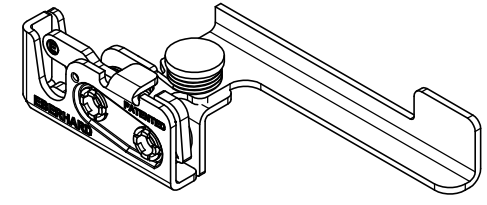
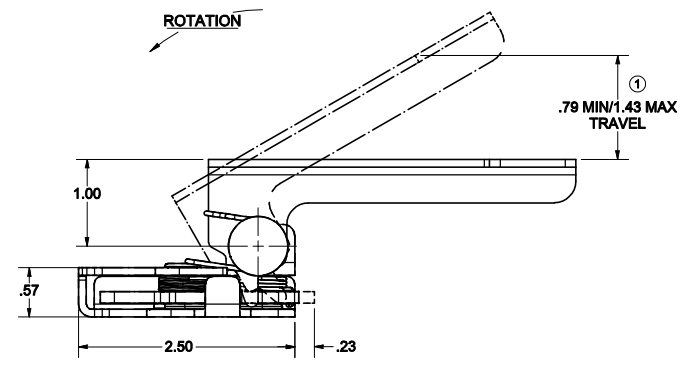


CONFIDENTIAL NOTICE: This drawing and the design, specifications and engineering information disclosed herein are the property of Eberhard Manufacturing Company and are not to be disseminated or reproduced without express written consent. The drawing is issued in confidence and then only for consideration of the matter disclosed herein. In accepting form of this drawing, recipient agrees to keep it and the matter disclosed herein in confidence and not to use nor permit their use in any way whatsoever by Eberhard Manufacturing Company, Division of the Eastern Company, 21844 Delta Road, Cleveland, Ohio 44148-9712. © 2012 EBERHARD MFG. CO.

REVISION HISTORY		REV	DESCRIPTION	EN	DATE	REV. BY	APPROV. BY
1	REVISED, REDRAWN AND CONVERTED TO 3D	5873			8-28-12		
1	.79 MIN/.43 MAX WAS .79/.143 MAX	5886			1-4-13		
2	FINISH ADDED TO (24) ELECTROPLATED ZINC	5902			8-8-13		
3	ADDED DIMENSION FOR M70 HOLE ADDED THREAD CALL OUT.	6028			8-14-13		
4	FINISH CODE UPDATED TO (26) ELECTROPLATED ZINC/NICKEL TYPE B BLACK	5846			3/27/2020	DJK	MR
5	FINISH CODE UPDATED TO (46) ELECTROPLATED ZINC/NICKEL CLEAR	5847			4/9/2020	DJK	MR



**12-240-L
LEFT HAND
MINI-ROTARY LOCK**



WARNING
THIS PRODUCT MUST NOT BE USED FOR PERSONAL RESTRAINT APPLICATIONS

MINI-ROTARY™ IS A TRADEMARK OF EBERHARD MFG. CO., DIVISION OF THE EASTERN COMPANY.

- NOTES:**
1. USE 1/4-20 GRADE 8 BOLTS FOR INSTALLATION. RECOMMENDED TORQUE FOR TIGHTENING: 14 FT./LBS.
 2. MAX LOAD RATING: 750 LBS
 - ② 3. FINISHES:
 - A. ZINC WITH YELLOW CHROMATE & EVERLUBE INTERNAL COMPONENTS, FC (64)
 - B. E-COAT WITH EVERLUBE INTERNAL COMPONENTS, FC (23)
 - C. ELECTROPLATED ZINC & EVERLUBE INTERNAL COMPONENTS, FC (24)
 - ⑤ ④ D. ELECTROPLATED ZINC/NICKEL CLEAR & EVERLUBE INTERNAL COMPONENTS, FC (46)

SUPERSEDES DRAWING 12-240 RL SH1 DATED 6-18-02.

CUSTOMER PRINT
SHEET 1 OF 2
PATENTED
RIGHT HAND SHOWN
LEFT HAND OPPOSITE

THIS DOCUMENT IS IN ACCORDANCE WITH ASME Y14.19-2009		DATE 02/26/2012		NAME	
UNLESS OTHERWISE SPECIFIED TOLERANCES ARE AS FOLLOWS:		DRAWN		MINI-ROTARY LOCK W/ SPECIAL ACTUATOR	
LINEAR MEASURE: INCH		F.P.P.		MATERIAL	
2 PLACE DEC: .010 .015 .020		SCALE		PART NUMBER	
3 PLACE DEC: .010 .015 .020		FULL		12-240-R/L	
ALL HOLE: .005 .010 .015		CHECK			

C:\TEMP\868443-0261-4823-9177-e4c2c531b1c81P03024012-240 RL SH1.dwg