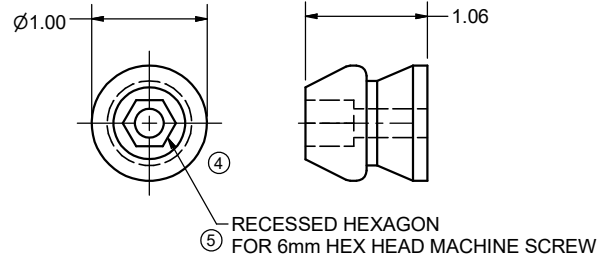
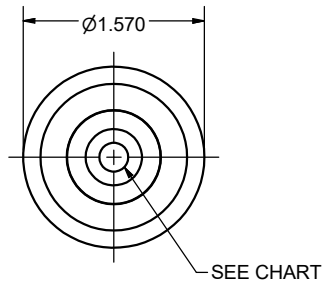
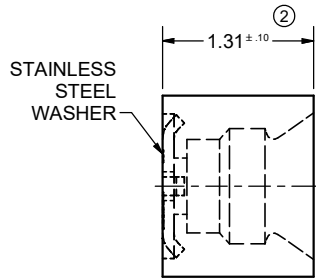


CONFIDENTIAL NOTICE: This drawing and the designs, specifications and engineering information disclosed herein are the property of Eberhard Manufacturing Company and are not to be disseminated or reproduced without express written consent. The drawing is loaned in confidence and then only for consideration of the matter disclosed herein. In accepting loan of this drawing, recipient agrees to keep it and the matter disclosed herein in confidence and not to use nor permit their use in any way detrimental to Eberhard Manufacturing Company, Division of the Eastern Company, 21944 Drake Road, Cleveland, Ohio 44149-9712 © 2016 EBERHARD MFG. CO.

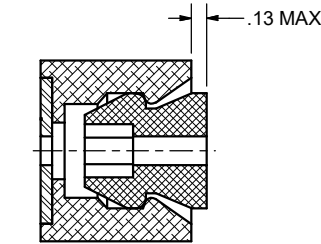
REVISION HISTORY					
REV	DESCRIPTION	EN	DATE	REV BY	APVD BY
	CONVERTED TO 3D	5595	3-15-13		
1	ADDED SECTION VIEW	5723	10-2-15		
2	1.31 +/- .10 WAS 1.31 +/- .010	5743	3-11-16	FLP	MR
3	ADDED NOTE	5772	9-30-16	FLP	MR
4	REVISED VIEW	5780	12-2-16	FLP	MR
5	REVISED NOTE	5783	12-23-16	FLP	MR

* PART NO.	STYRENE-BUTADIENE (SBR) SHORE "A"	FEMALE BASE	FINISH	WASHER HOLE	TYP. INSERT	TYP. EXTRACT	USABLE TEMP. RANGE °C/°F
1-666-2	55 - 65	666-1	(MB)	.25 DIA.	59 lbs.	66 lbs.	-60°/-76° TO +85°/185°
1-774-2	35 - 45	774-1	(MB)	.25 DIA.	25 lbs.	26 lbs.	-20°/-4° TO +100°/212°
1-775-2	35 - 45	775-1	(MB)	TAPPED 6MM	25 lbs.	26 lbs.	-20°/-4° TO +100°/212°
1-776-2	25 - 35	776-1	(MB)	.25 DIA.	19 lbs.	20 lbs.	-25°/-13° TO +50°/122°
1-777-2	55 - 65	777-1	(MB)	TAPPED 6MM	59 lbs.	66 lbs.	-60°/-76° TO +85°/185°
1-778-2	25 - 35	778-1	(MB)	TAPPED 6MM	19 lbs.	20 lbs.	-25°/-13° TO +50°/122°



FEMALE BASE
 PART NO.: SEE CHART
 MATERIAL: SEE CHART
 COLOR: SEE CHART

MALE STEM
 PART NO.: 666-2
 MATERIAL: POLYPROPYLENE
 COLOR: BLACK
 USABLE TEMP. RANGE: -20°C/-4°F TO 50°C/122°F



- NOTES:
- * PART NUMBER INCLUDES BOTH FEMALE BASE & MALE STEM PACKAGED IN A SECURE POLY BAG.
 - TYPICAL LOADS ARE TO BE USED FOR REFERENCE ONLY AS ENVIRONMENTAL CONDITIONS AND PRODUCT APPLICATIONS WILL CAUSE VARIATIONS IN PERFORMANCE.
 - FINISH: MATTE BLACK, FC (MB)
 - TO ORDER 100 PIECES PER BOX, ORDER: 1-776-2-BX100-MB (EXAMPLE)

SUPERSEDES DRAWING 1-666-2 CHART DATED 7-1-05.

THIS DOCUMENT IS IN ACCORDANCE WITH ASME Y14.15-2009		DATE 3/15/2013
LINEAR MEASURE: INCH UNLESS OTHERWISE SPECIFIED TOLERANCES ARE AS FOLLOWS:		DR BY FLP
ANGLES: ± 2° ± 2°	IN MM	SCALE FULL
2 PLACE DEC.: ± .03 ± .76		CHK BY
3 PLACE DEC.: ± .015 ± .38		
ALL HOLES: ± .005 ± .13		

CUSTOMER PRINT	
EBERHARD MANUFACTURING CO. DIVISION OF THE EASTERN COMPANY CLEVELAND, OHIO 44149-9712	
NAME	RUBBER DOOR HOLDER ASSEMBLY
MATERIAL	SEE CHART
PART NUMBER	1-666-2
CHART	