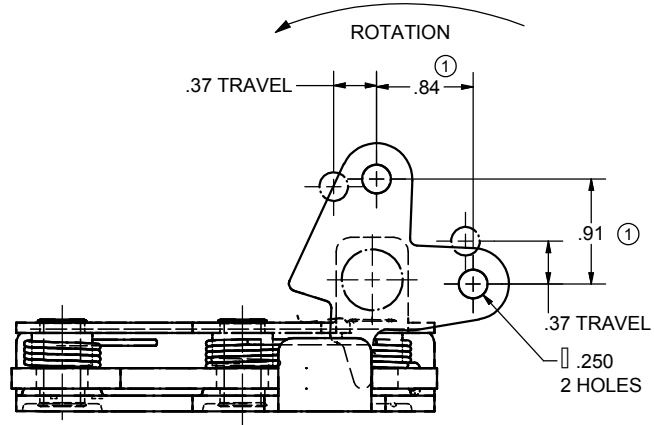


CONFIDENTIAL NOTICE: This drawing and the designs, specifications and engineering information disclosed hereon are the property of Eberhard Manufacturing Company and are not to be disseminated or reproduced without express written consent. The drawing is loaned in confidence and then only for consideration of the matter disclosed hereon. In accepting loan of this drawing, recipient agrees to keep it and the matter disclosed hereon in confidence and not to use nor permit their use in any way detrimental to Eberhard Manufacturing Company, Division of the Eastern Company, 21944 Drake Road, Cleveland, Ohio 44148-9712 © 2016 EBERHARD MFG. CO.

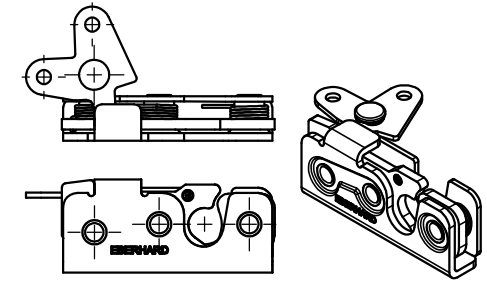
| REVISION HISTORY | | | | | |
|------------------|--------------------|---------|------------|--------|---------|
| REV | DESCRIPTION | EN | DATE | REV BY | APVD BY |
| | RELEASED IN 3D | EN 5482 | 12/10/2010 | | |
| 1 | REVISED DIMENSIONS | EN 5533 | 12/16/2011 | | |
| 2 | REVISED NOTE | EN 5745 | 3-25-16 | FLP | MR |

D
C
B
A

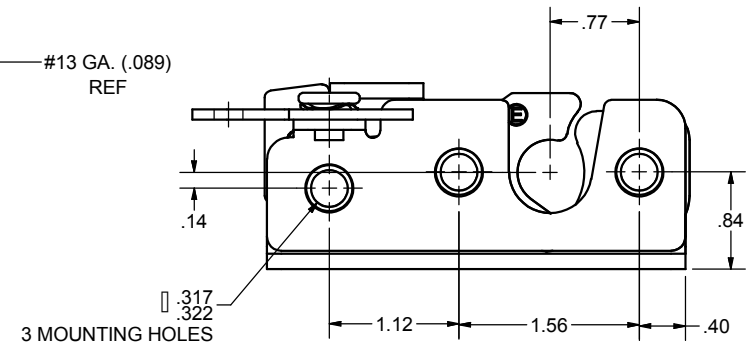
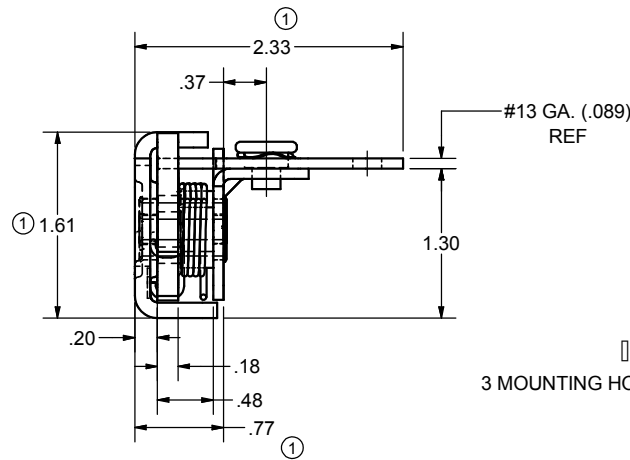
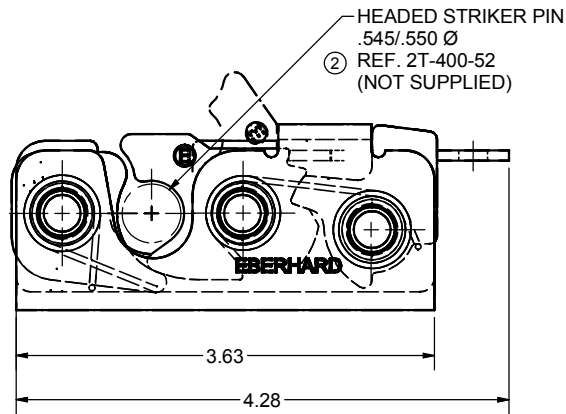
D
C
B
A



AVAILABLE FINISHES:
(25) ELECTROPLATED ZINC
(BG) BEARING GREASE WITH EVERLUBE
INTERNAL COMPONENTS



LEFT HAND
SCALE: HALF



CUSTOMER PRINT
SHEET 1 OF 2
RIGHT HAND SHOWN
LEFT HAND OPPOSITE

NOTE:
1. USE .312 DIA. GRADE 8 BOLTS FOR INSTALLATION TO MEET FMVSS 206 SAFETY STANDARDS.
2. RECOMMENDED TORQUE FOR TIGHTENING: 130±10IN. LBS.

EBERHARD MANUFACTURING CO.
DIVISION OF
THE EASTERN COMPANY
CLEVELAND, OHIO 44149-9712

ROTARY LOCK

| | | |
|---|-----------|-------------|
| UNLESS OTHERWISE SPECIFIED TOLERANCES ARE AS FOLLOWS: | DATE | NAME |
| | 12/6/2010 | |
| ANGLES: .020 | DR BY | MATERIAL |
| | JNOLD | |
| 2 PLACE DEC: .03 | SCALE | PART NUMBER |
| 3 PLACE DEC: .015 | FULL | |
| ALL HOLES: .005 | CHK BY | 1-400R/L |

SUPERSEDES DRAWING 1-400-RL DATED 10-24-08.

4

3

2

1