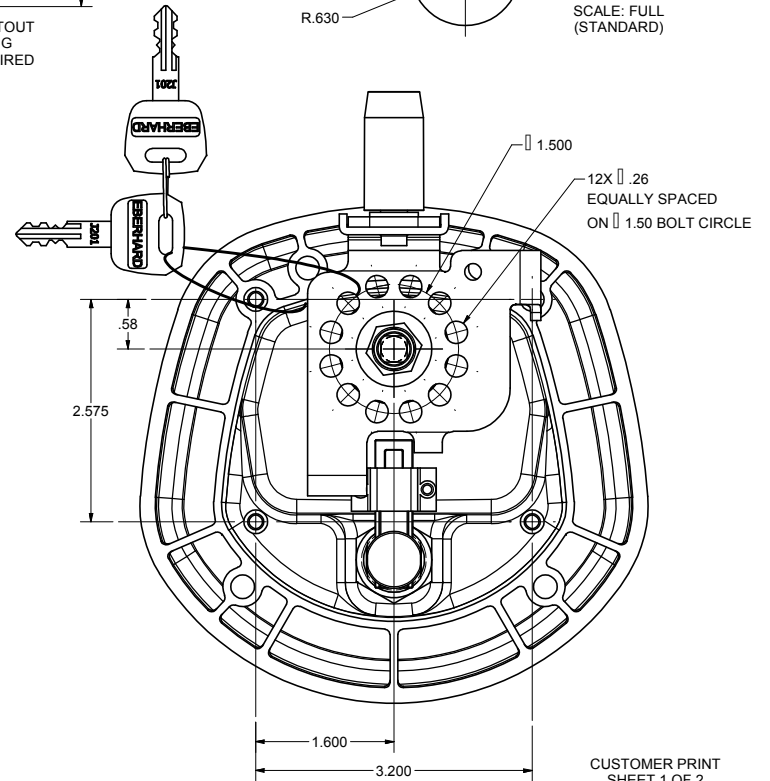
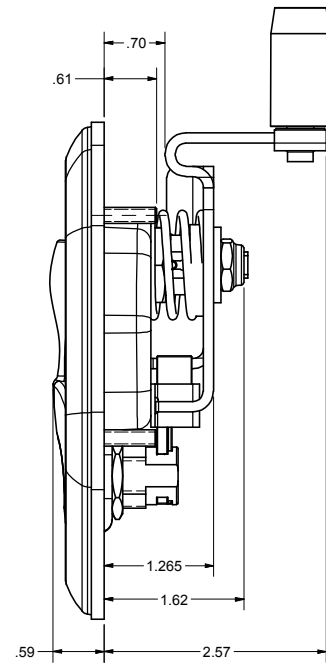
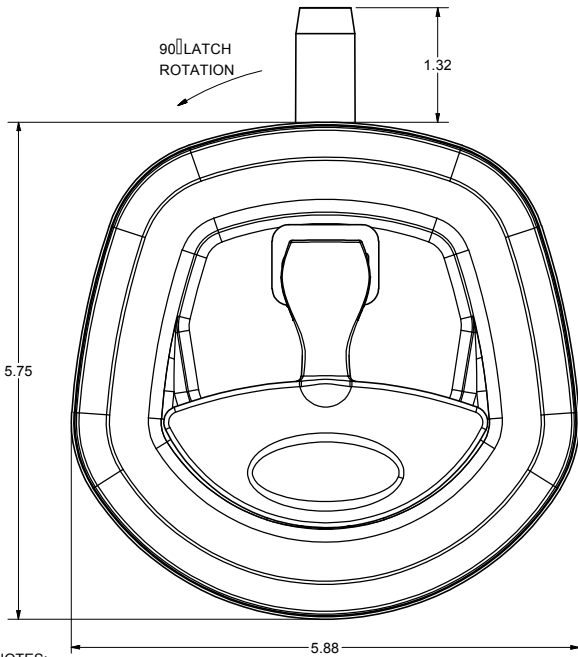
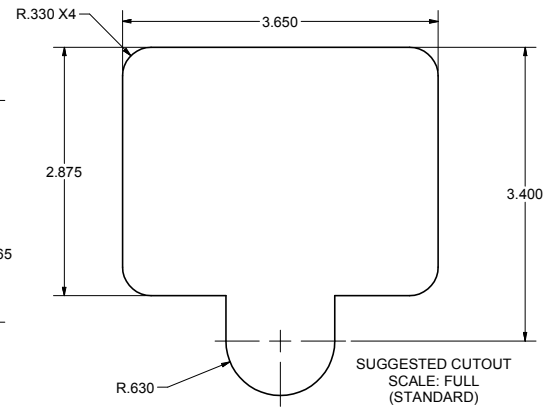
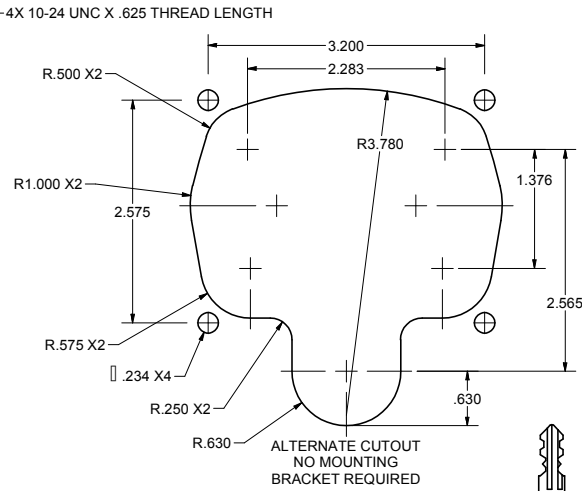
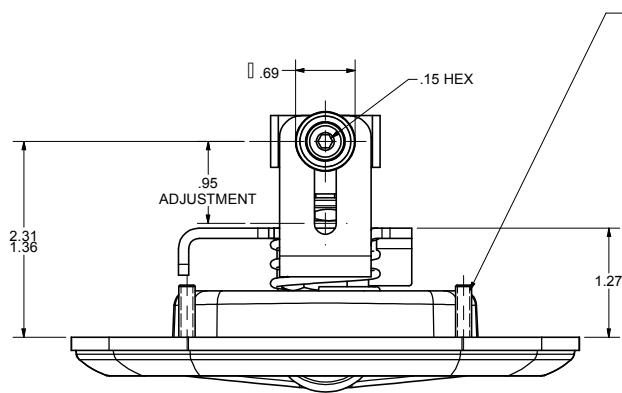


CONFIDENTIAL NOTICE: This drawing and the designs, specifications and engineering information disclosed hereon are the property of Eberhard Manufacturing Company and are not to be disseminated or reproduced without express written consent. The drawing is loaned in confidence and then only for consideration of the matter disclosed hereon. In accepting loan of this drawing, recipient agrees to keep it and the matter disclosed hereon in confidence and not to use nor permit their use in any way detrimental to Eberhard Manufacturing Company, Division of The Eastern Company, 2184 Drake Road, Cleveland, Ohio 44149-9712. © 2014 EBERHARD MFG. CO.

REVISION HISTORY				
REV	DESCRIPTION	EN	DATE	REV BY / APVD
1	RELEASED WAS 2-M10954	563	1-24-2014	
1	PATENTED WAS PATENT PENDING	568	12-18-14	FLP / MR



- NOTES:
 1. FINISHES:
 A. BRIGHT POLISHED RECEPTACLE AND CHROME HANDLE: FC (03)
 B. BLACK POWDER (TEXTURED) RECEPTACLE AND HANDLE, FC (42)
 C. BLACK POWDER (TEXTURED) RECEPTACLE AND CHROME HANDLE: FC (35)
 2. 35 IN-LBS MAX. TORQUE ON MOUNTING STUDS
 3. KEY CYLINDER WITH 10 KEY CHANGES, J201 THRU J210
 SUPPLIED WITH TWO DOUBLE BITTED KEYS
 EXAMPLE ORDER AS: 1-28400-R/L-JXXX-XX

FINISH CODE
(SEE NOTE #1)
 KEY NUMBER

ASSEMBLY P/N	PANEL THK	MOUNTING BRACKET KIT P/N	CUTOUT TYPE
1-28400-RL	N/A	NONE	ALTERNATE
1-28400A-URL	.047	28400A-60U	STANDARD
1-28400B-URL	.079	28400B-60U	STANDARD
1-28400C-URL	.135	28400C-60U	STANDARD

1 PATENTED

THIS DOCUMENT IS IN ACCORDANCE WITH ASME Y14.19-2009	
LINEAR MEASURE: INCH	DATE 1/24/2014
UNLESS OTHERWISE SPECIFIED TOLERANCES ARE AS FOLLOWS:	DR BY EBERHARD
ANGLES: 20 20	SCALE FULL
2 PLACE DEC: .05 .10	MATERIAL
3 PLACE DEC: .015 .030	CNTRY
ALL HOLES: .005 .13	

EBERHARD MANUFACTURING CO.	
DIVISION OF THE EASTERN COMPANY CLEVELAND, OHIO 44149-9712	
NAME KEY LOCKING COMPRESSION LATCH, WITH 5/8 THREAD LENGTH STUDS	
MATERIAL	PART NUMBER 1-28400-RL