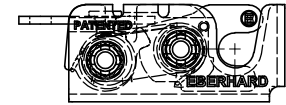
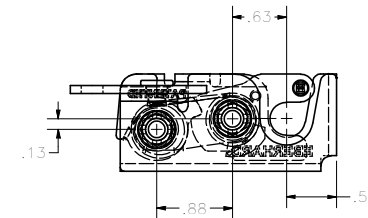
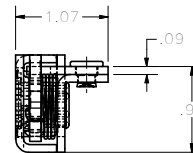
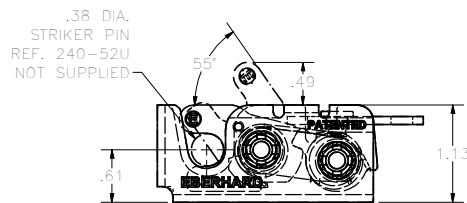
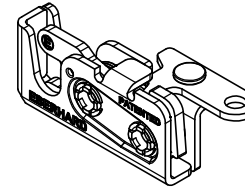
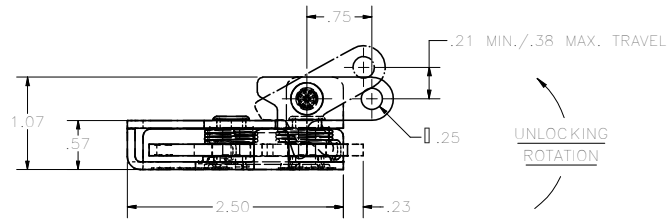


CONFIDENTIAL NOTICE: This drawing and the designs, specifications and engineering information disclosed hereon are the property of Eberhard Manufacturing Company and are not to be disseminated or reproduced without express written consent. The drawing is loaned in confidence and then only for consideration of the matter disclosed hereon. In accepting loan of this drawing, recipient agrees to keep it and the matter disclosed hereon in confidence and not to use nor permit their use in any way detrimental to Eberhard Manufacturing Company, Division of the Eastern Company, 21844 Drake Road, Cleveland, Ohio 44149-9712. © 2012 EBERHARD MFG. CO.

REVISION HISTORY			
REV	DESCRIPTION	EN	DATE
1	REVISED, REDRAWN AND CONVERTED TO 3D	9273	8-28-12



1-241-L
LEFT HAND
MINI-ROTARY™ LOCK



NOTES:

1. USE 1/4-20 GRADE 8 BOLTS FOR INSTALLATION. RECOMMENDED TORQUE FOR TIGHTENING: 14 FT./LBS.
2. MAX LOAD RATING: 750 LBS
3. FINISHES:
 - A. EVERLUBE INTERNAL COMPONENTS, FC (54)
 - B. BEARING GREASE WITH EVERLUBE INTERNAL COMPONENTS, FC (BG)

PATENTED
CUSTOMER PRINT
SHEET 1 OF 2
RIGHT HAND SHOWN
LEFT HAND OPPOSITE



MINI-ROTARY™ IS A TRADEMARK OF EBERHARD MFG. CO.,
DIVISION OF THE EASTERN COMPANY.

EBERHARD MANUFACTURING CO.
DIVISION OF
THE EASTERN COMPANY
CLEVELAND, OHIO 44149-9712

UNLESS OTHERWISE SPECIFIED		9/28/2012
DIMENSIONS ARE IN INCHES UNLESS OTHERWISE SPECIFIED		
ANGLES:	0° 0'	0° 0'
2 PLACE DEC:	0.05	0.10
3 PLACE DEC:	0.015	0.03
4 PLACE DEC:	0.005	0.01

SINGLE STAGE MINI-ROTARY LOCK	
DATE: 9/28/2012	REV: 1
DESIGNER: FLP	CHECKED: FULL
MANUFACTURED BY: -----	PART NUMBER: 1-241 RL

SUPERSEDES DRAWING 1-241 RL SH1 DATED 5-28-96.