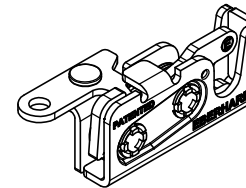
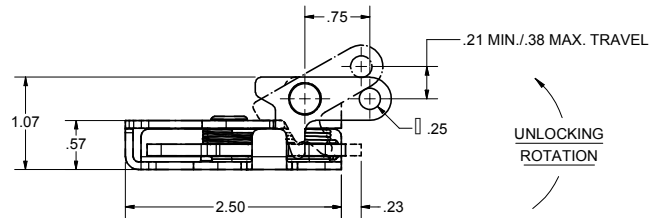
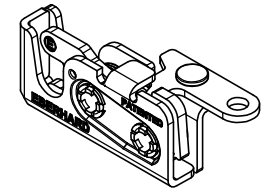


CONFIDENTIAL NOTICE: This drawing and the designs, specifications and engineering information disclosed hereon are the property of Eberhard Manufacturing Company and are not to be disseminated or reproduced without express written consent. The drawing is loaned in confidence and then only for consideration of the matter disclosed hereon. In accepting loan of this drawing, recipient agrees to keep it and the matter disclosed hereon in confidence and not to use nor permit their use in any way detrimental to Eberhard Manufacturing Company, Division of the Eastern Company, 21944 Drake Road, Cleveland, Ohio 44148-9712. © 2016 EBERHARD MFG. CO.

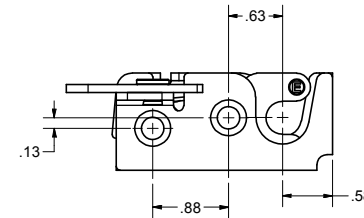
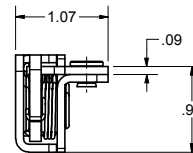
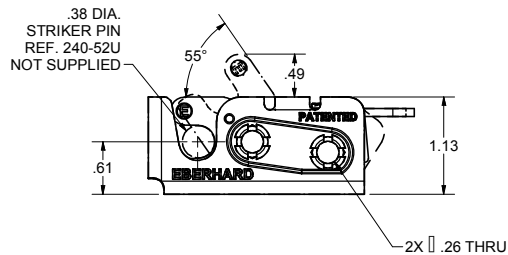
REVISION HISTORY				
REV	DESCRIPTION	EN	DATE	REV BY / APP'D BY
1	RELEASED WAS M11899	5754	5/27/2016	YWB / LSW



P/N: 1-241-NTL
LEFT HAND
SCALE 1 : 1



P/N: 1-241-NTR
RIGHT HAND
SCALE 1 : 1



- NOTES:
- USE 1/4-20 GRADE 8 BOLTS FOR INSTALLATION. RECOMMENDED TORQUE FOR TIGHTENING: 14 FT-LBS.
 - MAX LOAD RATING: 750 LBS
 - FINISHES:
 - (S4) EVERLUBE (INTERNAL COMPONENTS), WITH (24) FRONT AND BACK PLATES.
 - (BG) BEARING GREASE (ON EVERLUBE INTERNAL COMPONENTS), WITH (24) FRONT AND BACK PLATES.

MINI-ROTARY IS A TRADEMARK OF EBERHARD MFG. CO.,
DIVISION OF THE EASTERN COMPANY.



PATENTED
CUSTOMER PRINT
SHEET 1 OF 2
RIGHT HAND SHOWN
LEFT HAND OPPOSITE

THIS DOCUMENT IS IN ACCORDANCE WITH ASME Y14.19-2009		DATE: 5/27/2016		NAME: SINGLE STAGE MINI-ROTARY LOCK W/ THRU MTG HOLES	
UNLESS OTHERWISE SPECIFIED TOLERANCES ARE AS FOLLOWS:		DR BY: EBERHARD		MATERIAL: -----	
LINEAR MEASURE: INCH	MM	SCALE	DR BY	PART NUMBER	
2 PLACE DEC: .005	.005	FULL	YWB	1-241-NTR/L	
3 PLACE DEC: .015	.015	FULL	YWB		
ALL HOLES: .005	.005	FULL	YWB		