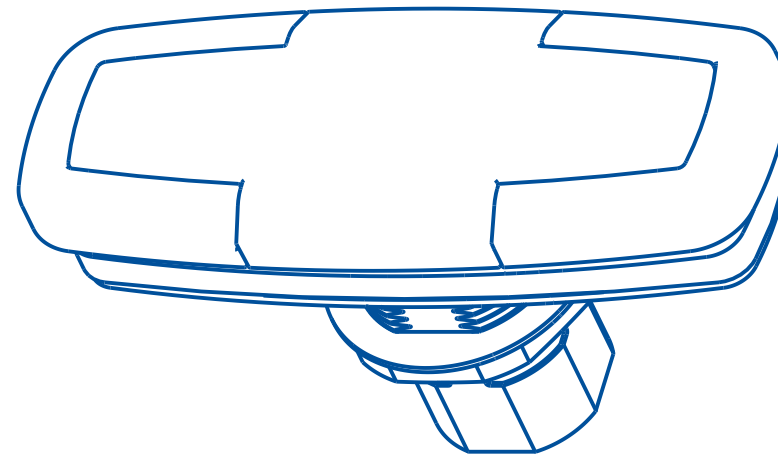
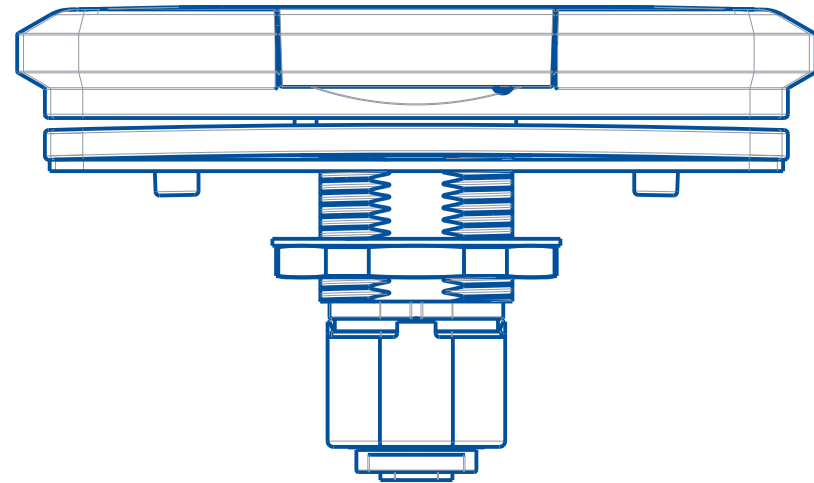


NOTES:

1. AFTER ASSEMBLING KEY CYLINDER, KEYS MUST INSERT SMOOTHLY IN EITHER DIRECTION AND MUST RETURN TO CENTER POSITION ($0^{\circ} \pm 2^{\circ}$) AFTER BEING LOCKED AND UNLOCKED.
2. LUBRICATE SPRINGS, O-RING AND DEAD BOLT MATING SURFACES ALL AROUND WITH MOBIL 1 SYNTHETIC RED GREASE.
3. LOCATING PIN TO BE REMOVED WHEN HANDLE IS BEING INSTALLED ON A CAP.
4. 1.0 ± 0.5 LB FORCE TO ACTIVATE SLIDE BOLT. DETENT MUST RETAIN BOLT AT TRAVEL STOPS WITH NO SLOP.
5. HANDLE TO RETURN TO CLOSED POSITION STOP WHEN RELEASED. WITH HANDLE AT STOP, OUTER PROFILE TO BE PARALLEL TO WITHIN $\pm 0.5^{\circ}$.
6. ROCK/SLOP: NO CONTACT ALLOWED BETWEEN HANDLE AND BUSHING WHEN ASS'Y IS COMPRESSED AT EITHER EDGE.
7. O-RINGS CRUSH 0.003" MIN.



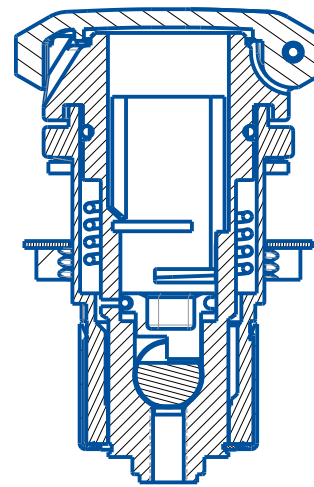
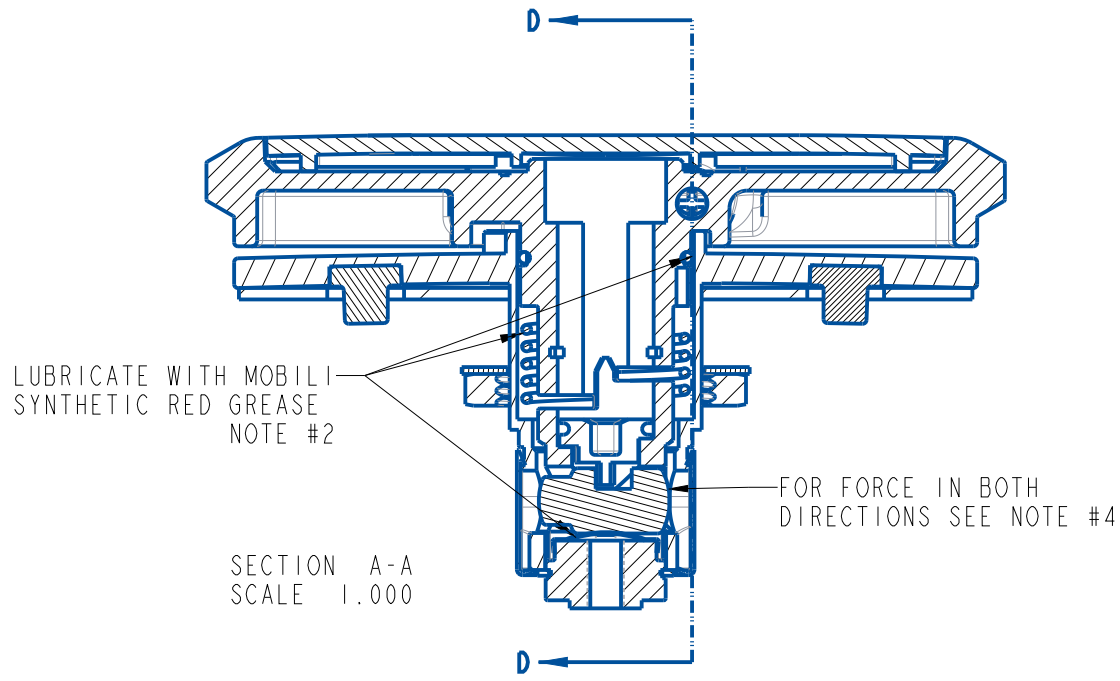
PART	REV	DESCRIPTION	QTY
02474	D	HANDLE, ET20	1
02473	C	BUSHING, HANDLE, ET20	1
02472	A	LID, HANDLE, ET20	1
02471	A	GASKET, HANDLE, ASSEMBLY, ET20	1
02470	A	SPRING, DETENT, SST, ET20	1
01855	A	SPRING, DETENT, LOCK BOLT, HALF MOON	1
01757	E	SLIDE BOLT, EGR	1
01700	B	ASM, KEY CYLINDER, SIDE CUT	1
01579	A	KEY CYL, ADAPTOR, RETAINING, PIN	1
01464	C	KEY CYLINDER SPACER, EL5	1
00695	B	WASHER WITH 4 FLATS	1
00692	B	PIN, HINGE, ET10, ET12	2
00690	C	PIN, LID DETENT, ET10, ET12	1
00660	E	CAP, DUST COVER, PLASTIC, EL2, ET10, ET15	1
00636	C	O-RING, HANDLE,	1
00593	E	SNAP RING, HANDLE, 0.590" ID, 0.720" OD, EL2, ET10, ET12, ET15	1
00591	H	SPRING, TORSION, HANDLE, EL2, ET10, ET15	1
00216	F	PIN, ANTI-ROTATION, 00655, EL1, EL2, ET15	2
00025	D	SPRING, HINGE, SST, ET-5, ET10, ET12	1
00018	E	NUT, BUSHING, 1.125-16	1

BUILD TOLERANCES X.X ± 0.030 X.XX ± 0.015 X.XXX ± 0.005 X.XXXX ± 0.003 ANGLES $\pm 1^{\circ}$ INSP. PT.	FINISH:	ASSY	MAT'L:	ASSY
	DESCRIPTION:	HANDLE, ASSEMBLY, ET20		
	REV. LEVEL:	F	REV. DATE:	07-10-20
	ECN #:	427	SHEET 1 OF 2	UNITS:
DETAILED BY:		LJH	REVISED BY:	LJH
CHECKED BY:		-	DWG SIZE	B
SCALE:	SEE NOTES	DATE:	01-28-20	

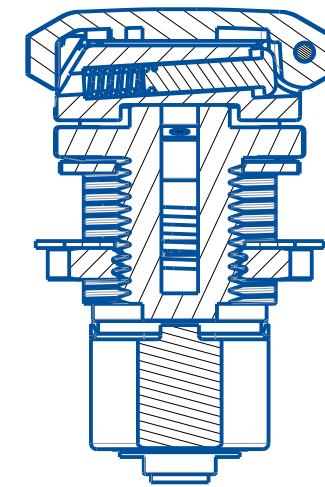
P/N: 02475



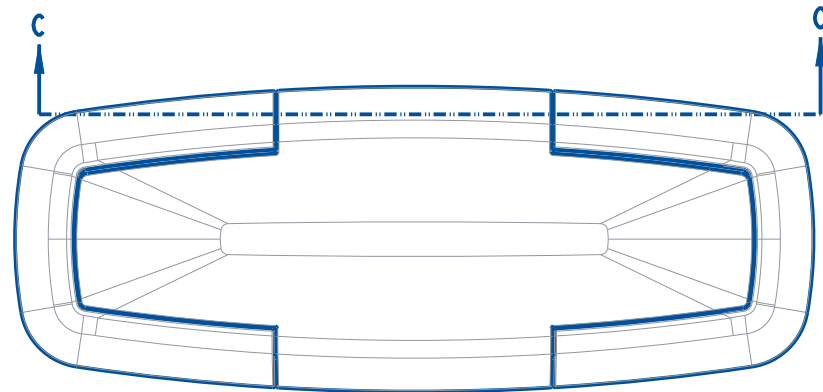
www.loadnlocksystems.com



SECTION B-B

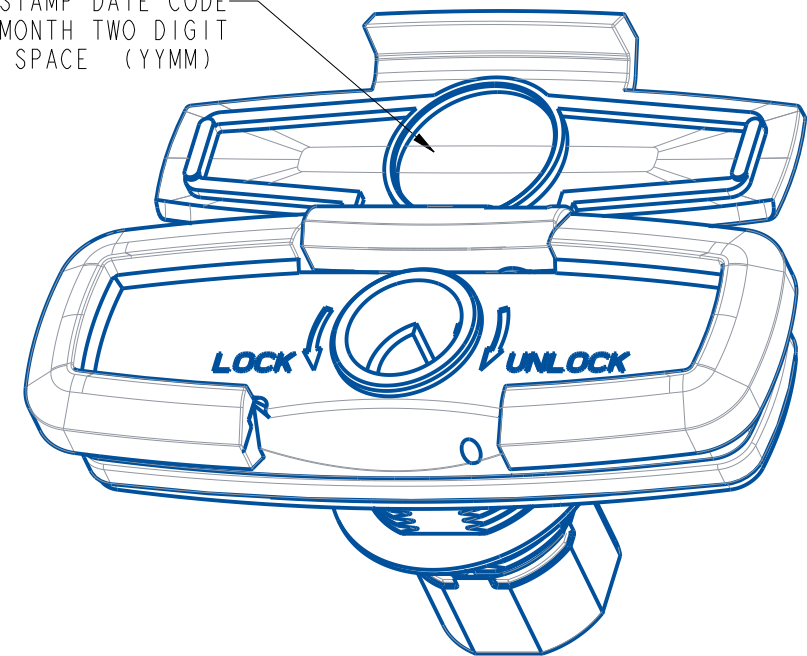


SECTION D-D



SECTION C-C

INK STAMP DATE CODE
YEAR TWO DIGIT MONTH TWO DIGIT
NO SPACE (YYMM)



BUILD TOLERANCES X.X ±0.030 X.XX ±0.015 X.XXX ±0.005 X.XXXX ±0.003 ANGLES ±1° INSP. PT.	FINISH: ASSY		MAT'L: ASSY		DWG SIZE	
	DESCRIPTION: HANDLE, ASSEMBLY, ET20					
	REV. LEVEL: F	REV. DATE: 07-10-20	DETAILED BY: LJH	REVISED BY: LJH	CHECKED BY: -	B
	ECN #: 427	SHEET 2 OF 2	UNITS: INCH	SCALE: SEE NOTES	DATE: 01-28-20	

P/N: 02475



www.loadnlocksystems.com