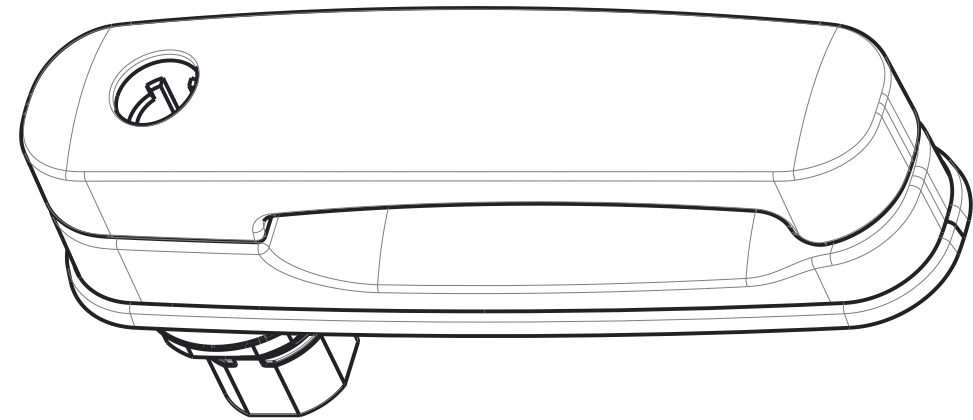
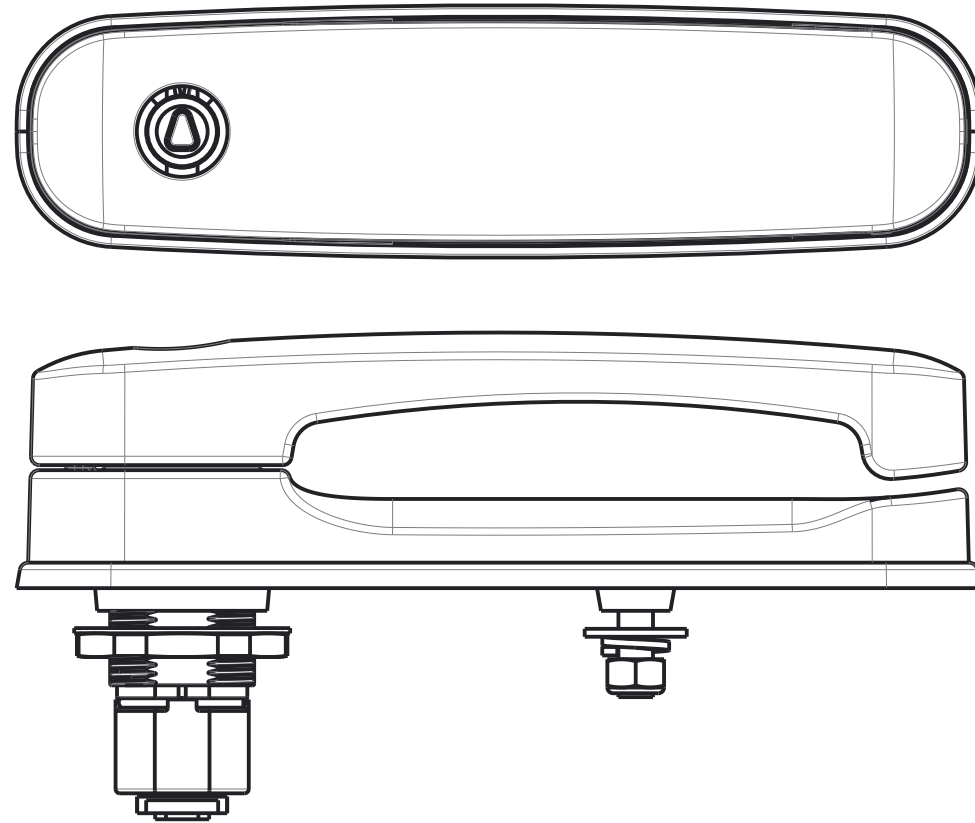


NOTES:

- KEYS INSERTED IN EITHER DIRECTION MUST RETURN TO UPRIGHT POSITION ( $0^{\circ} \pm 2^{\circ}$ ) AFTER BEING LOCKED AND UNLOCKED.
- PRODUCTION DATE STAMP LOCATED ON THE BACK OF HANDLE USE YYMM FORMAT
- LUBRICATE SPRINGS AND O-RING MATING SURFACES ALL AROUND.
- $0.75 \pm 0.25$  LB FORCE TO ACTIVATE SLIDE BOLT. DETENT MUST RETAIN BOLT AT TRAVEL STOPS WITH NO SLOP.
- HANDLE TO RETURN TO CLOSED POSITION STOP WHEN RELEASED. WITH HANDLE AT STOP, OUTER PROFILE TO BE PARALLEL TO WITHIN  $\pm 0.5^{\circ}$ .
- SALT FOG TEST PARTS TO ASTM B117-03
- ROCK/SLOP: NO CONTACT ALLOWED BETWEEN HANDLE AND BUSHING WHEN ASSY IS COMPRESSED.
- O-RINGS CRUSH 0.003" MIN.

PART	REV	DESCRIPTION	QTY
01855	A	SPRING, DETENT, LOCK BOLT, HALF MOON	1
01779	D	EL9 HANDLE ASM	1
01778	B	BUSHING, SIDE CUT, EL9, ASM	1
01757	E	SLIDE BOLT, EGR	1
01749	C	KEY CYLINDER SPACER,	1
01581	B	KEY CLY, ADAPTOR, RETAINING, PIN	1
01580	D	SPRING, TORSION, HEAVY HANDLE	1
01479	A	O-RING, HANDLE,	1
01456	A	6MM, FENDER WASHER, SS	1
01453	A	6MM, LOCK WASHER, SS	1
01445	D	GASKET, BUSHING, EL4	1
01442	A	6MM x 1 PITCH, NYLOK NUT, SS	1
00695	B	WASHER WITH 4 FLATS	1
00660	E	CAP, DUST COVER, PLASTIC, EL2, ET10, ET15	1
00018	E	NUT, BUSHING, 1.125-16	1

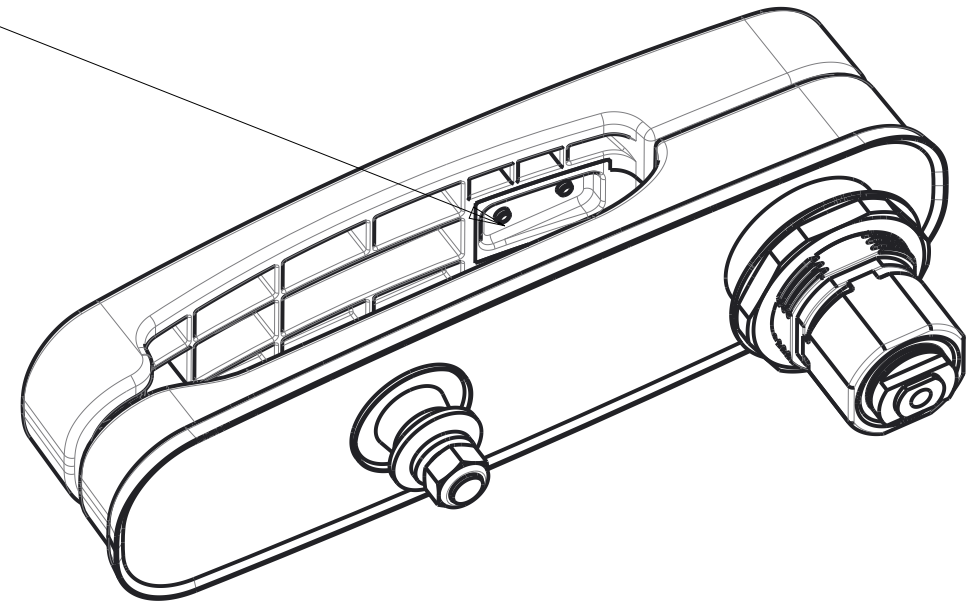
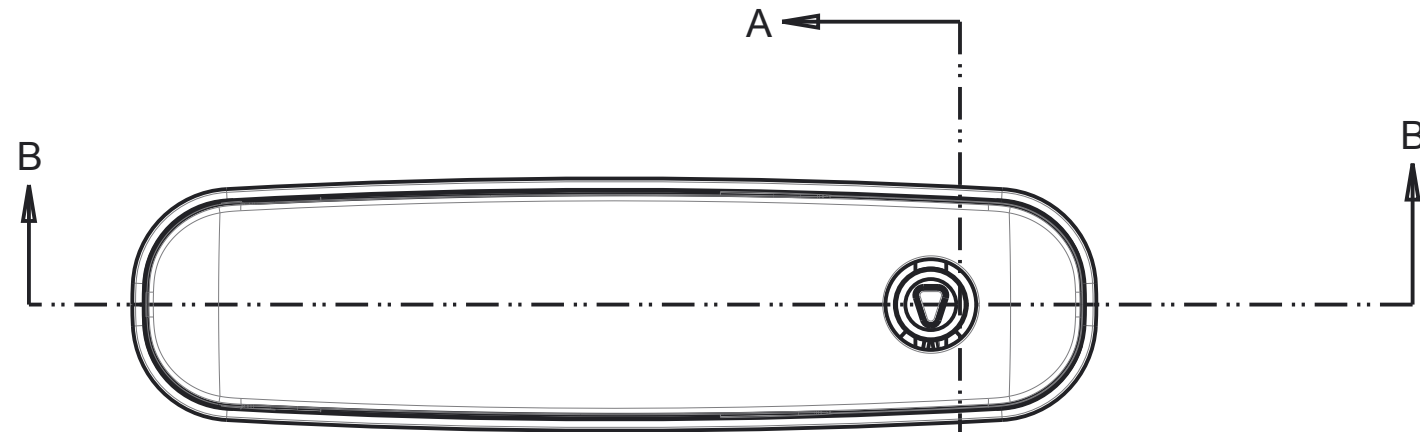


BUILD TOLERANCES		FINISH:	-	MATL:	-
X.X	$\pm 0.030$	DESCRIPTION:	EL9 COMPOSITE HANDLE		
X.XX	$\pm 0.015$	REV. LEVEL:	D	REV. DATE:	12-22-17
X.XXX	$\pm 0.005$			DETAILED BY:	LJH
X.XXXX	$\pm 0.003$			REVISED BY:	LJH
ANGLES	$\pm 1^{\circ}$			CHECKED BY:	-
INSP. PT.		ECN #:	371	UNITS:	INCH
			SHEET 1 OF 2	SCALE:	SEE NOTES
				DATE:	02-24-16
				DWG SIZE	B

P/N: **01780**

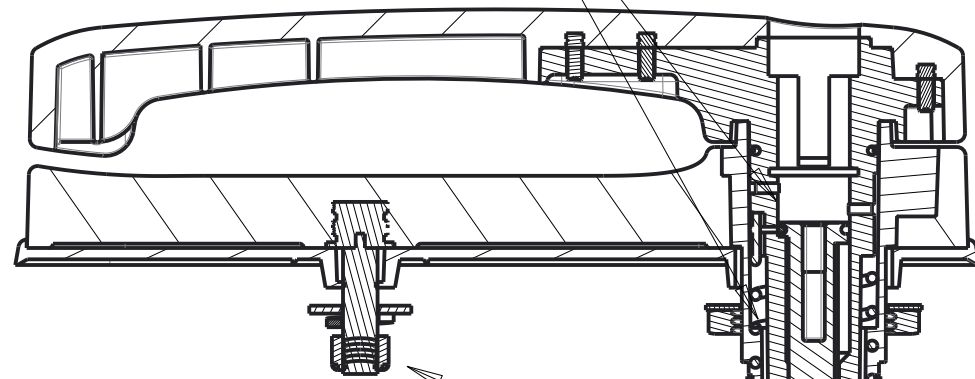
[www.loadnlocksystems.com](http://www.loadnlocksystems.com)

INK STAMP DATE CODE  
 YEAR TWO DIGIT MONTH TWO  
 DIGIT NO SPACE (YYMM)



LUBRICATE BOTH SPRINGS  
 ALL AROUND.

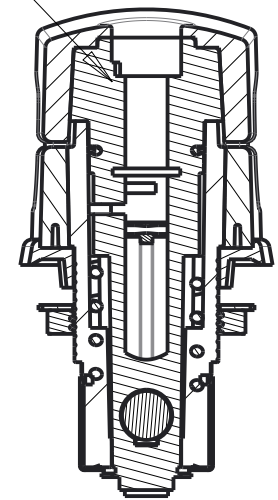
LUBRICATE O-RING  
 AREA ALL AROUND.



FOR FORCE IN BOTH  
 DIRECTIONS SEE NOTE #4

SLIDE BOLT TO BE INSTALLED  
 WITH SMALL END POINTING AWAY  
 FROM STUD.

SECTION B-B



SECTION A-A

BUILD TOLERANCES X.X ±0.030 X.XX ±0.015 X.XXX ±0.005 X.XXXX ±0.003 ANGLES ±1° INSP. PT.	FINISH:	-	MATL:	-				
	DESCRIPTION:	EL9 COMPOSITE HANDLE						
	REV. LEVEL:	D	REV. DATE:	12-22-17	DETAILED BY:	REVISED BY:	CHECKED BY:	DWG SIZE
					LJH	LJH	-	B
ECN #:	371	SHEET 2 OF 2	UNITS:	INCH	SCALE:	SEE NOTES	DATE:	02-24-16

P/N: 01780



www.loadnlocksistemas.com