



EBERHARD®



ELECTRONIC



FMVSS



DOVETAIL



MINI



ROTARY LATCH & STRIKER

PRODUCT CATALOG 2022



EBERHARD MANUFACTURING

Established in 1877, The Eberhard Manufacturing Company is a global leader in the engineering and manufacturing of access & security hardware. We have a standard product line of rotary latches, compression latches, draw latches, hinges, cam locks, key switches, padlocks, and handles to name a few. We also offer full development and program management services for custom electromechanical and mechanical systems designed for specific OEM's and customer applications. Our products are found in an expansive range of applications and products globally, virtually unnoticed in our everyday lives. Typically, you are never more than 6 feet from one of our solutions.

The Eberhard Manufacturing Company is a registered ISO9001:2015 and ISO14001:2015 company based in Strongsville, Ohio. Our core manufacturing capabilities are in die-casting, injection molding, stamping, machining and final assembly. Our passion for engineering drives us forward. Developing new products to meet our customer's design challenges is our main objective. Adding haptics and functionality to our products ultimately supports our customer's brand equity and increases the value of their end products.

Eberhard is a division of The Eastern Company (Nasdaq stock ticker EML).

LOCATIONS

USA

Corporate/Manufacturing

Eberhard Manufacturing Company
21944 Drake Road
Strongsville, OH 44149-9712

Sales & Engineering

Eberhard Manufacturing Company
3930 N Ventura Drive
Arlington Heights, IL 60004

CHINA

Manufacturing

Eberhard – Dongguan
Building 13, No. 199 Pulong Road, Tangxia Town
Shenzhen Shi Guangdong Sheng Dongguan City,
Guangdong Province 523719, China

Manufacturing

Eberhard – Eastern Industrial, Ltd. (Shanghai)
20 Lane 2248 Liuxiang Road
Shanghai, China 201801

MEXICO

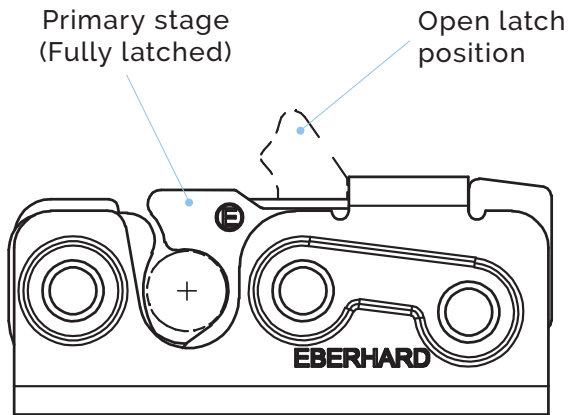
Manufacturing

Eberhard – Reynosa
Villas del Parque, 88780 Reynosa,
Tamaulipas, Mexico

COMPACT ROTARY LATCHES

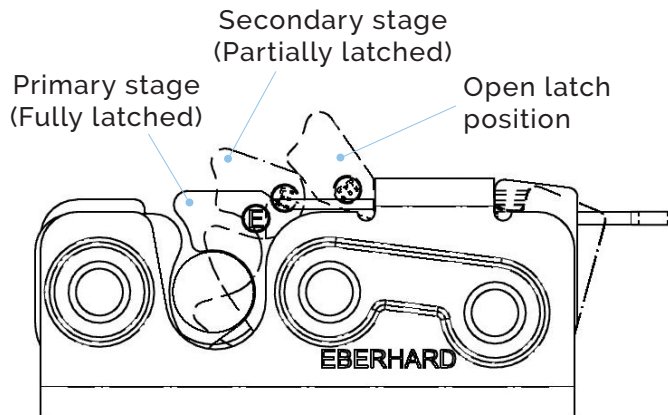


SINGLE STAGE ROTARY vs DUAL STAGE ROTARY



Single Stage latch

The latch has one latched position. The latch is either open or fully latched.



Dual Stage latch

The latch has two latched positions. The fully latched position and the partially latched position to prevent a false latching condition.

See pages 27-28 for recommended 3/8" diameter strikers

200 SERIES COMPACT ROTARY LATCH

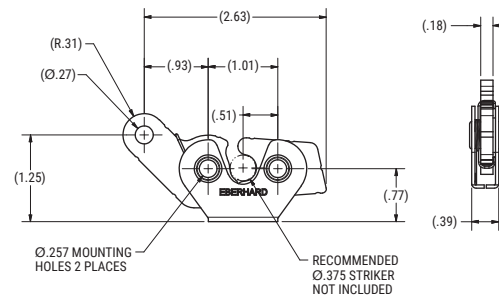
SINGLE STAGE ROTARY LATCH

| PART # | MOUNTING | STRIKER SIZE |
|--------|-----------------|--------------|
| 200-64 | 1/4" thru holes | .38" |

- Single stage
- To be used with a 3/8" diameter striker
- Rated to a max load of 500 lbs
- Does not meet FMVSS 206 Passenger Restraint standards

MATERIAL: Steel

FINISH: Zinc plated with fluorocarbon latch pawls



200-64

MINI ROTARY LATCHES



231 SERIES MINI ROTARY LATCH

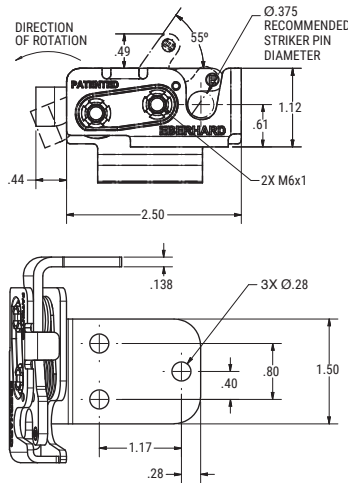
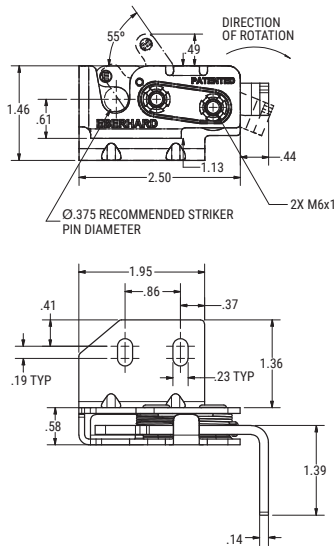
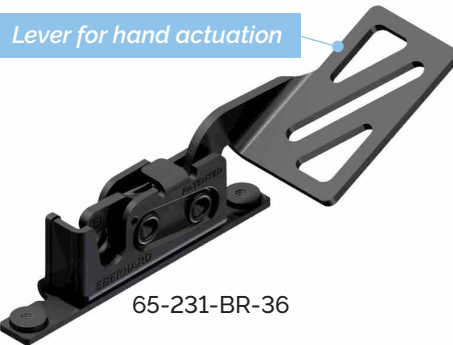
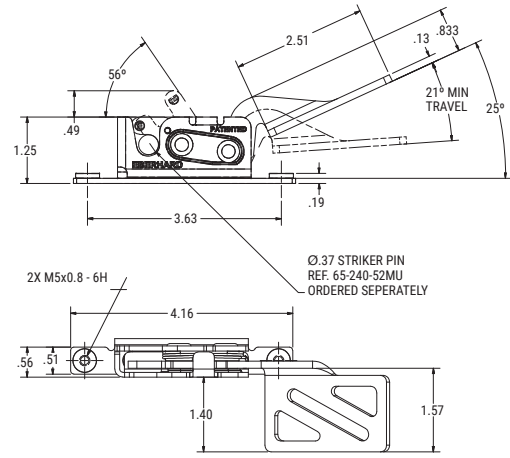
SINGLE STAGE ROTARY LATCH

| PART # | HAND | MOUNTING | STRIKER SIZE |
|--------------|------|------------------------|--------------|
| 65-231-BR-36 | RH | M5 x .8 threaded holes | .38" |
| 65-231-BL-36 | LH | M5 x .8 threaded holes | .38" |
| 77-231-MR-BG | RH | M6 x 1 threaded holes | .38" |
| 77-231-ML-BG | LH | M6 x 1 threaded holes | .38" |
| 79-231-ML-BG | LH | M6 x 1 threaded holes | .38" |

- Single stage
- To be used with a 3/8" diameter striker
- Rated to a max load of 750 lbs
- Does not meet FMVSS 206 Passenger Restraint standards

MATERIAL: Steel

FINISH: Zinc plated with fluorocarbon latch pawls



231 SERIES MINI ROTARY LATCH

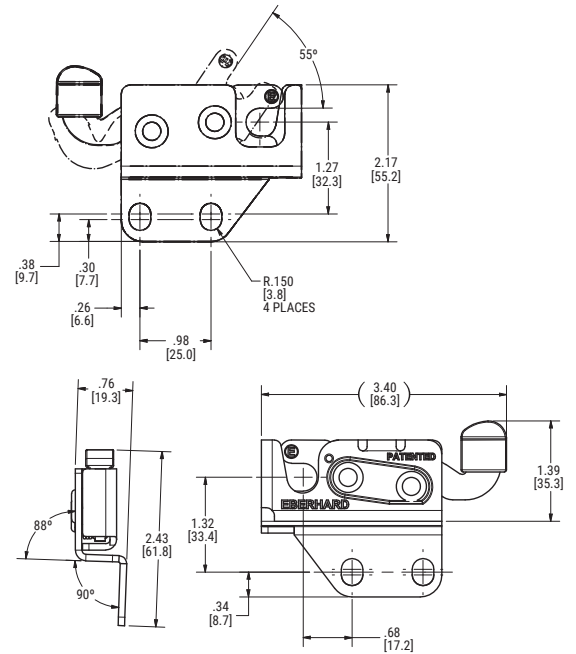
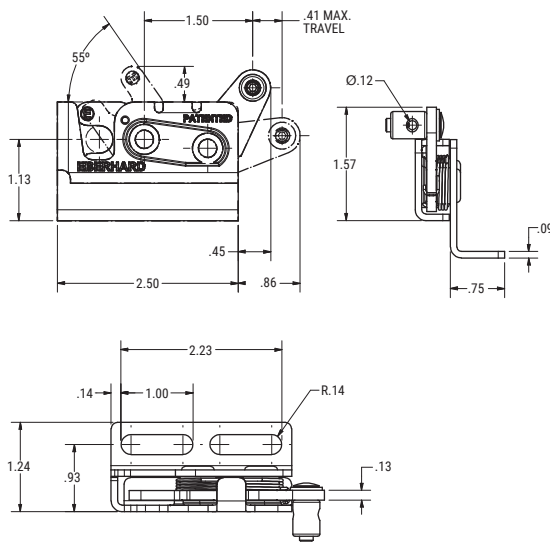
SINGLE STAGE ROTARY LATCH

| PART # | HAND | MOUNTING | STRIKER SIZE |
|--------------|------|------------------|--------------|
| 88-231-R-64 | RH | Mounting bracket | .38" |
| 58B-231-R-23 | RH | Mounting bracket | .38" |
| 58B-231-L-23 | LH | Mounting bracket | .38" |

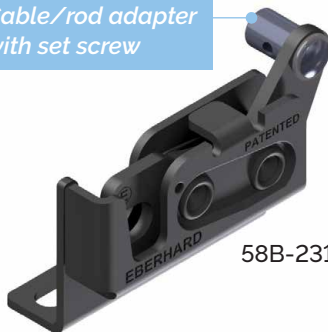
- Single stage
- To be used with a 3/8" diameter striker
- Rated to a max load of 750 lbs
- Does not meet FMVSS 206 Passenger Restraint standards

MATERIAL: Steel

FINISH: Zinc plated with fluorocarbon latch pawls; Black E-coat

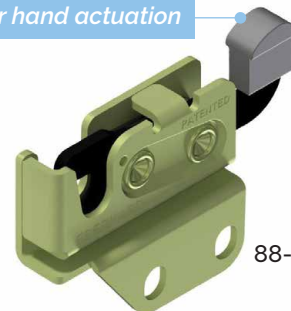


Cable/rod adapter with set screw



58B-231-R-23

Lever for hand actuation



88-231-R-64

240 SERIES MINI ROTARY LATCH

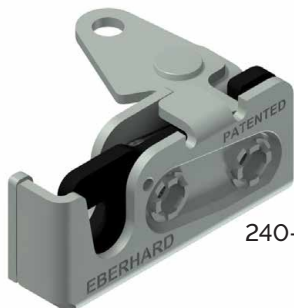
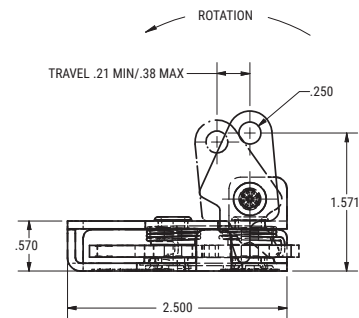
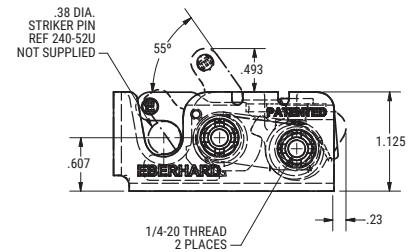
SINGLE & DUAL STAGE ROTARY LATCHES

| PART # | HAND | MATERIAL | FINISH | LEVER ARM | MOUNTING | SINGLE/DUAL STAGE | SPRING | STRIKER SIZE |
|---------------|------|-----------------|------------|-----------------------|--------------------------|-------------------|----------|--------------|
| 240-L-54 | LH | Steel | Zinc | Horizontal | 1/4" x 20 threaded holes | Dual | Standard | .38" |
| 240-R-54 | RH | Steel | Zinc | Horizontal | 1/4" x 20 threaded holes | Dual | Standard | .38" |
| 241-SSL-22 | LH | Stainless steel | Passivated | Horizontal | 1/4" x 20 threaded holes | Single | Standard | .38" |
| 1-240-L-54 | LH | Steel | Zinc | Horizontal w/bend | 1/4" x 20 threaded holes | Dual | Standard | .38" |
| 1-240-R-54 | RH | Steel | Zinc | Horizontal w/bend | 1/4" x 20 threaded holes | Dual | Standard | .38" |
| 1-241-L-54 | LH | Steel | Zinc | Horizontal w/bend | 1/4" x 20 threaded holes | Single | Standard | .38" |
| 1-241-R-54 | RH | Steel | Zinc | Horizontal w/bend | 1/4" x 20 threaded holes | Single | Standard | .38" |
| 1-241-NTR-54 | RH | Steel | Zinc | Horizontal w/bend | 1/4" thru holes | Single | Standard | .38" |
| 2-241-NTL-54 | LH | Steel | Zinc | Horizontal | 1/4" x thru holes | Single | Standard | .38" |
| 2-241-NTR-54 | RH | Steel | Zinc | Horizontal | 1/4" x thru holes | Single | Standard | .38" |
| 8-240-L-54 | LH | Steel | Zinc | Vertical | 1/4" x 20 threaded holes | Dual | Standard | .38" |
| 8-240-R-54 | RH | Steel | Zinc | Vertical | 1/4" x 20 threaded holes | Dual | Standard | .38" |
| 8-241-L-54 | LH | Steel | Zinc | Vertical | 1/4" x 20 threaded holes | Single | Standard | .38" |
| 8-241-R-54 | RH | Steel | Zinc | Vertical | 1/4" x 20 threaded holes | Single | Standard | .38" |
| 8-240-ML-54 | LH | Steel | Zinc | Vertical | M6 x 1 threaded holes | Dual | Standard | .38" |
| 8-240-MR-54 | RH | Steel | Zinc | Vertical | M6 x 1 threaded holes | Dual | Standard | .38" |
| 8-240-SSL-22 | LH | Stainless steel | Passivated | Vertical | 1/4" x 20 threaded holes | Dual | Standard | .38" |
| 8-240-SSR-22 | RH | Stainless steel | Passivated | Vertical | 1/4" x 20 threaded holes | Dual | Standard | .38" |
| 11-240-L-54 | LH | Steel | Zinc | Horizontal | 1/4" x 20 threaded holes | Dual | Standard | .38" |
| 11-240-R-54 | RH | Steel | Zinc | Horizontal | 1/4" x 20 threaded holes | Dual | Standard | .38" |
| 12-240-L-24 | LH | Steel | Zinc | 4.25" ext. horizontal | 1/4" x 20 threaded holes | Dual | Standard | .38" |
| 12-240-R-24 | RH | Steel | Zinc | 4.25" ext. horizontal | 1/4" x 20 threaded holes | Dual | Standard | .38" |
| 76-241-ML-BG | LH | Steel | Zinc | Vertical | M6 x 1 threaded holes | Single | Standard | .38" |
| 8-247-BL-54 | LH | Steel | Zinc | Vertical | 1/4" x 20 threaded holes | Single | Heavy | .38" |
| 8-247-BR-54 | RH | Steel | Zinc | Vertical | 1/4" x 20 threaded holes | Single | Heavy | .38" |
| 33-248-MBR-36 | RH | Steel | Zinc | Horizontal, stepped | M6 x 1 threaded holes | Dual | Standard | .38" |

- Single or dual stage
- To be used with a 3/8" diameter striker
- Rated to a max load of 750 lbs
- Optional rubber snubber
- Does not meet FMVSS 206 Passenger Restraint standards

MATERIAL: Steel; Stainless steel

FINISH: Zinc or polished with fluorocarbon latch pawls



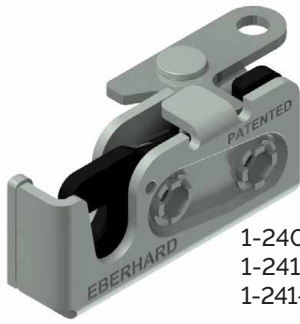
240-R-54



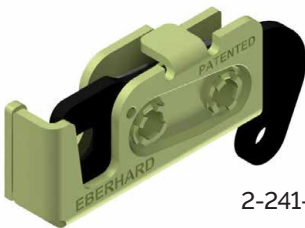
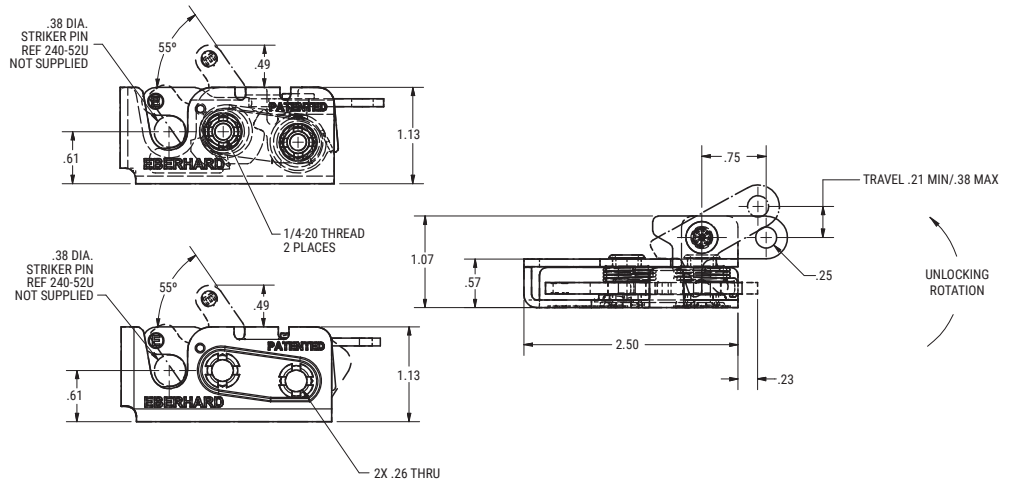
241-SSR-22

240 SERIES MINI ROTARY LATCH

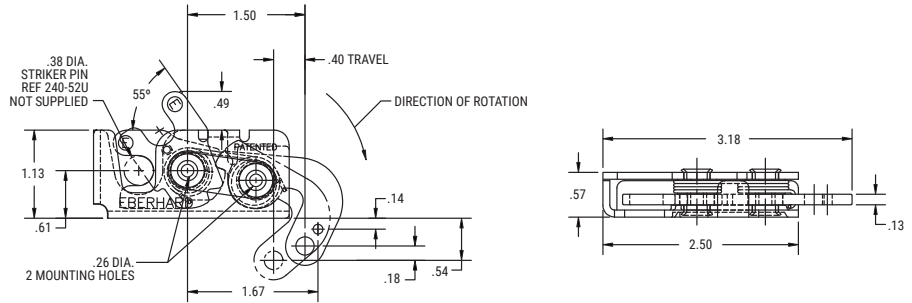
SINGLE & DUAL STAGE ROTARY LATCHES



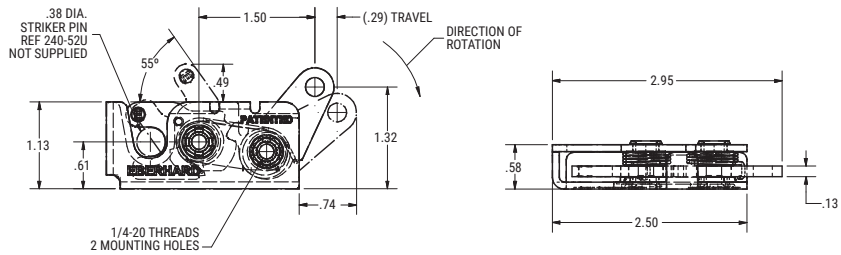
1-240-R-54
1-241-R-54
1-241-NTR-54



2-241-NTR-54



8-240-R-54
8-240-MR-54
8-241-R-54



8-240-SSR-22

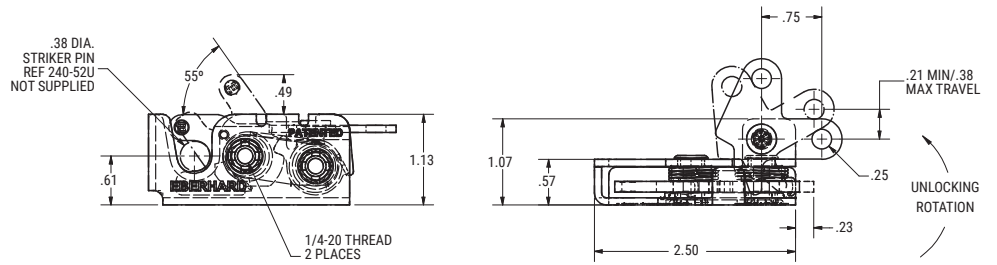
STAINLESS STEEL TO HELP PREVENT CORROSION

240 SERIES MINI ROTARY LATCH

SINGLE & DUAL STAGE ROTARY LATCHES

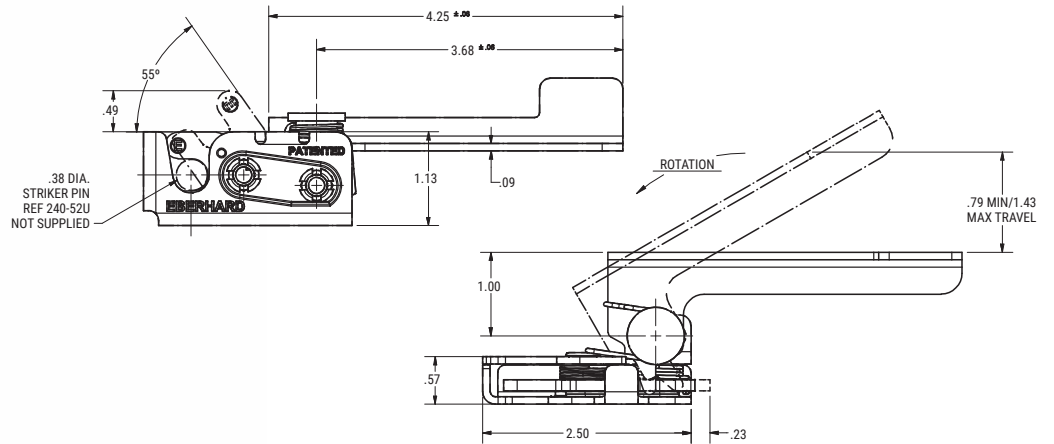


11-240-R-54

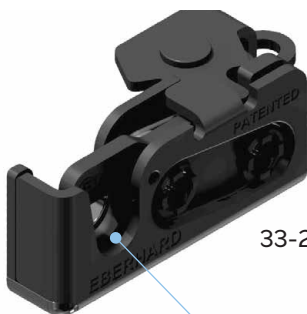
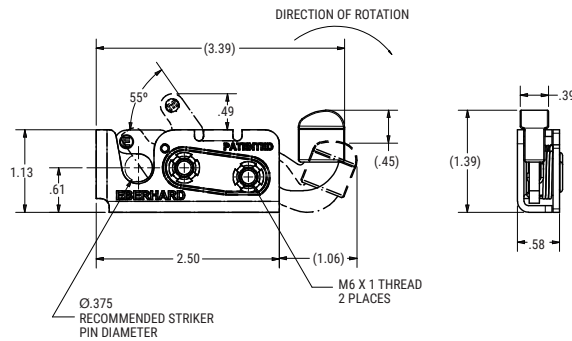


12-240-R-24

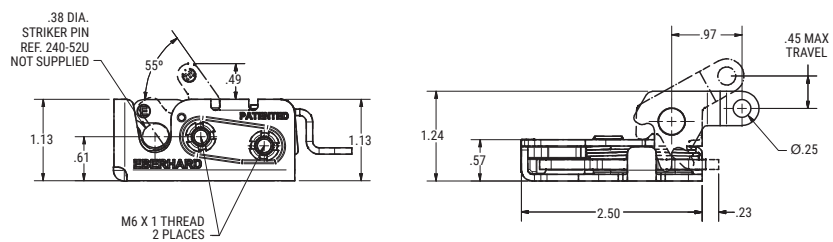
Lever for hand actuation



76-241-ML-BG



33-248-MBR-36



RUBBER SNUBBER FOR ANTI-RATTLE
Can be added to any 230/231/240/241 Series rotaries

LOAD N LOCK MINI SERIES ROTARY LATCH

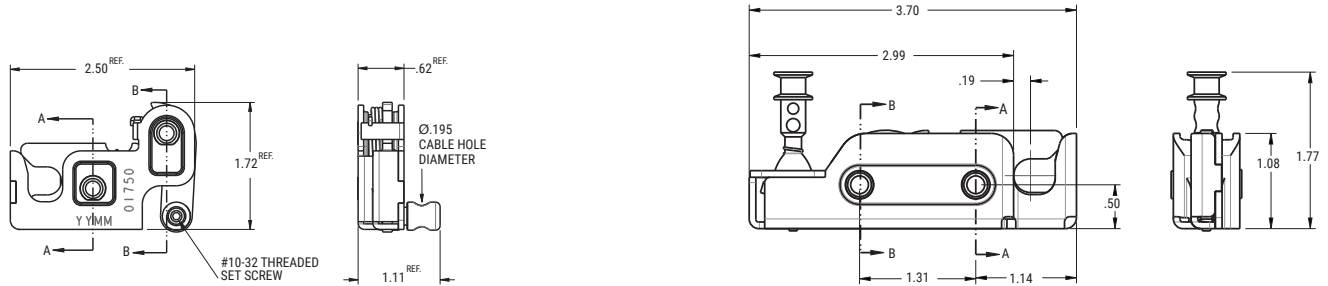
SINGLE STAGE ROTARY LATCH

| PART # | HAND | LEVER ARM | MOUNTING | SPRING | STRIKER SIZE |
|--------------|------|---------------------------|--------------------------|----------|--------------|
| LNL-77-01751 | LH | Bottom eyelet & set screw | 1/4" x 20 threaded holes | Light | .38" |
| LNL-77-01750 | RH | Bottom eyelet & set screw | 1/4" x 20 threaded holes | Light | .38" |
| LNL-77-00751 | LH | Bottom eyelet & set screw | 1/4" x 20 threaded holes | Standard | .38" |
| LNL-77-00750 | RH | Bottom eyelet & set screw | 1/4" x 20 threaded holes | Standard | .38" |
| LNL-77-00046 | n/a | 360° Joystick | 1/4" x 20 threaded holes | Standard | .38" |
| LNL-77-00289 | LH | Bottom eyelet & set screw | 1/4" x 20 threaded holes | Standard | .38" |
| LNL-77-00287 | RH | Bottom eyelet & set screw | 1/4" x 20 threaded holes | Standard | .38" |
| LNL-77-01945 | LH | Bottom eyelet & set screw | Mounting bracket | Heavy | .38" |
| LNL-77-01944 | RH | Bottom eyelet & set screw | Mounting bracket | Heavy | .38" |
| LNL-77-01956 | LH | Bottom eyelet & set screw | Mounting bracket | Heavy | .38" |
| LNL-77-01955 | RH | Bottom eyelet & set screw | Mounting bracket | Heavy | .38" |
| LNL-77-00791 | LH | Bottom eyelet & set screw | 1/4" x 20 threaded holes | Heavy | .38" |
| LNL-77-00790 | RH | Bottom eyelet & set screw | 1/4" x 20 threaded holes | Heavy | .38" |

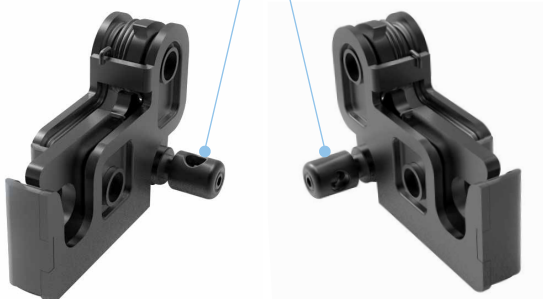
- Single stage
- To be used with a 3/8" diameter striker
- Rated to a max load of 750 lbs
- Does not meet FMVSS 206 Passenger Restraint standards
- This design features intuitive adapters, keeping the cables/rods in line with the actuator and close to the panel surface, which reduces the activation angle and trigger force.

MATERIAL: Steel

FINISH: Fluorocarbon latch pawls; Black E-coat



Cable/rod adapters with set screw



LNL-77-01750 (RH, shown)
LNL-77-01751 (LH)

LNL-77-00751 (LH, shown)
LNL-77-00750 (RH)

Joystick actuator



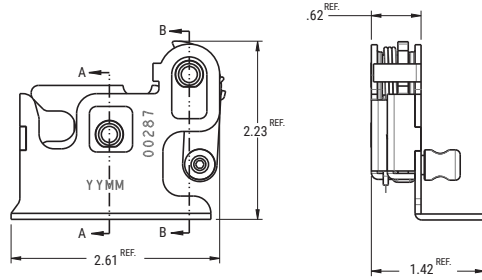
LNL-77-00046

LOAD N LOCK MINI SERIES ROTARY LATCH

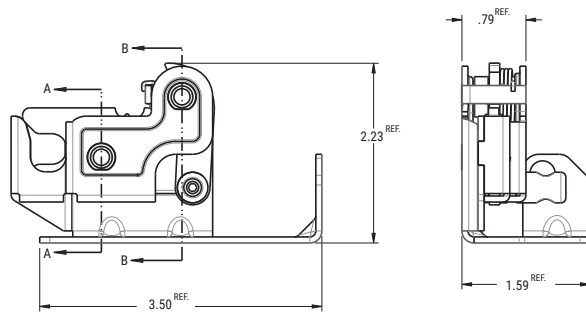
SINGLE STAGE ROTARY LATCH



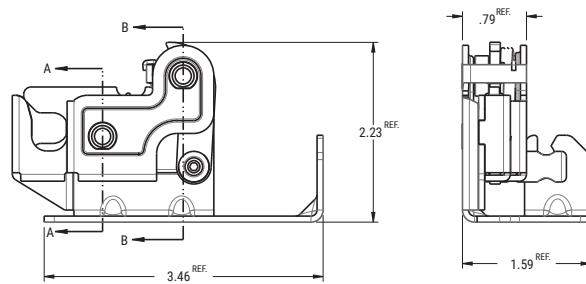
LNL-77-00287 (RH, shown)
LNL-77-00289 (LH)



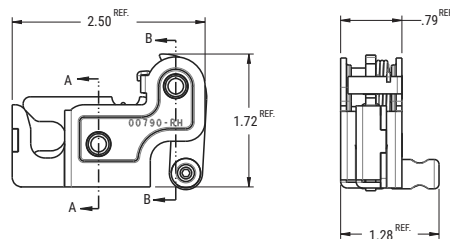
LNL-77-01944 (RH, shown)
LNL-77-01945 (LH)



LNL-77-01955 (RH, shown)
LNL-77-01956 (LH)



LNL-77-00790 (RH, shown)
LNL-77-00791 (LH)



LARGE ROTARY LATCHES



LARGE SERIES ROTARY LATCH

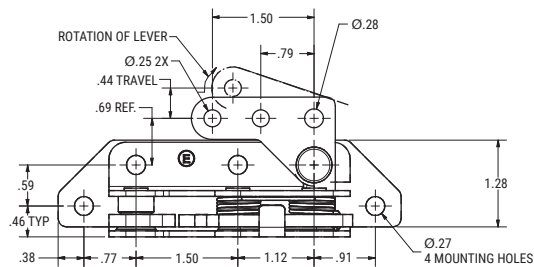
DUAL STAGE ROTARY LATCH

| PART # | HAND | MOUNTING | STRIKER SIZE |
|------------------|------|------------------|--------------|
| 1-300-R-25 | RH | Mounting bracket | .55" |
| 1-300-L-25 | LH | Mounting bracket | .55" |
| 20X-17400-SSR-BG | RH | .32" thru holes | .55" |
| 16898-SSBXL-23 | LH | .33" thru holes | .55" |

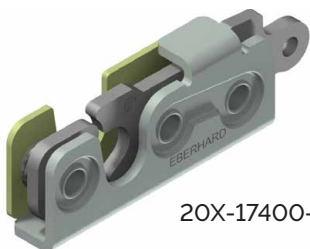
- Dual stage
- To be used with a .55" diameter striker
- Rated to a max load of 750 lbs
- Does not meet FMVSS 206 Passenger Restraint standards

MATERIAL: Steel; Stainless steel

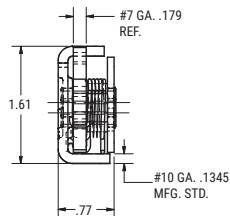
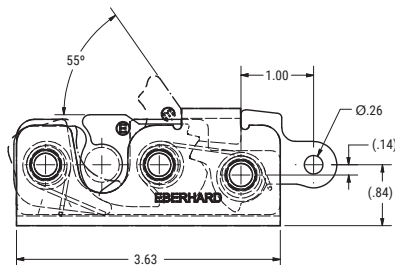
FINISH: Zinc plated with fluorocarbon latch pawls; Black E-coat



1-300-R-25



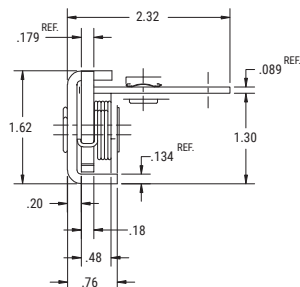
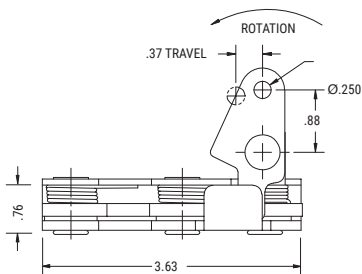
20X-17400-SSR-BG



STAINLESS STEEL TO HELP PREVENT CORROSION



16898-SSBXL-23



STAINLESS STEEL TO HELP PREVENT CORROSION

FMVSS LARGE SERIES ROTARY LATCH

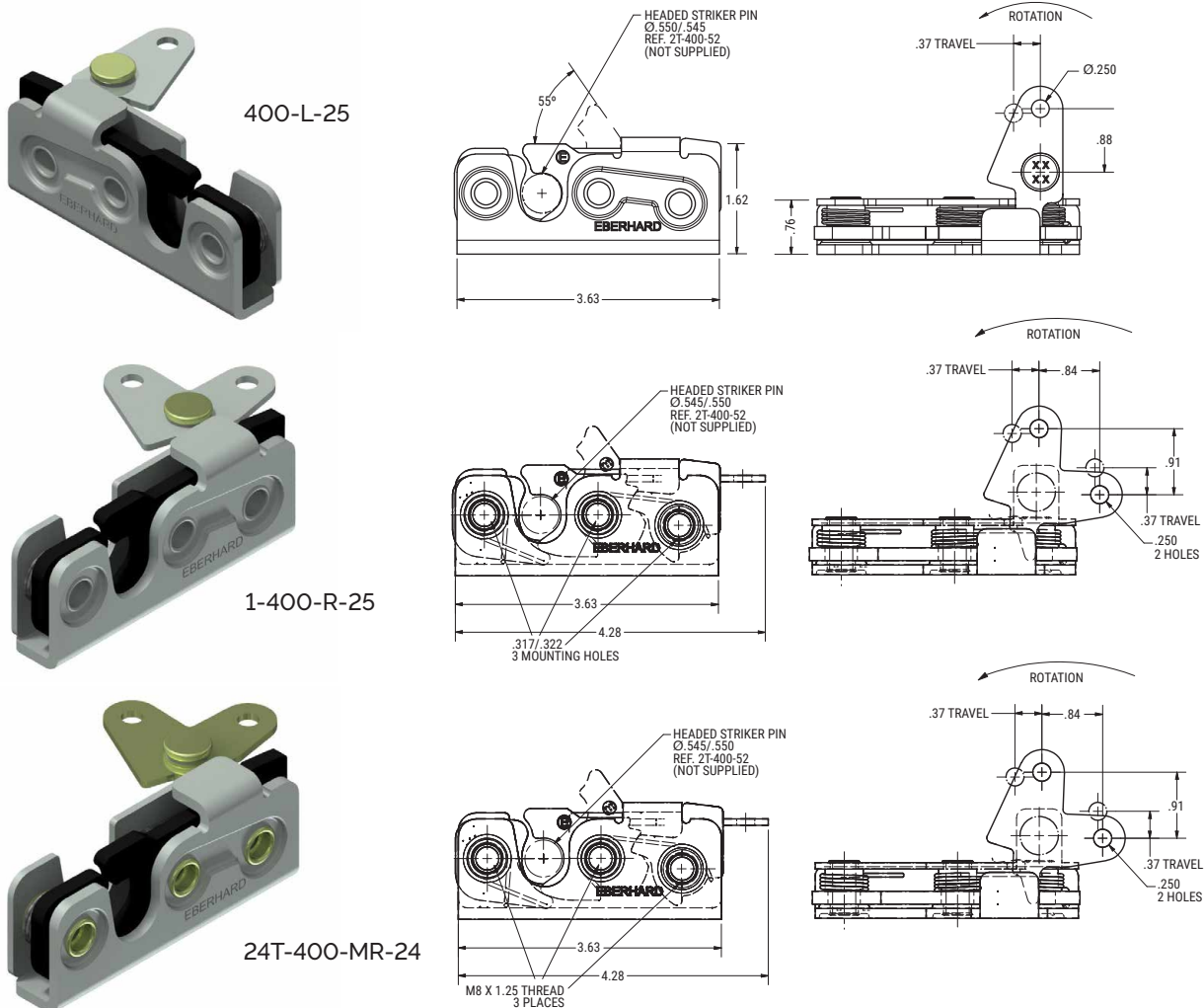
DUAL STAGE ROTARY LATCH

| PART # | HAND | LEVER ARM | MOUNTING | STRIKER SIZE |
|---------------|------|-------------------------------|--------------------------|--------------|
| 400-L-25 | LH | Horizontal | .31" thru holes | .55" |
| 1-400-L-25 | LH | Two point | .31" thru holes | .55" |
| 1-400-R-25 | RH | Two point | .31" thru holes | .55" |
| 24T-400-MR-24 | RH | Two point | M8 x 1.25 threaded holes | .55" |
| 42T-400-L-25 | LH | Two point | 1/4" x 20 threaded holes | .55" |
| 42T-400-R-25 | RH | Two point | 1/4" x 20 threaded holes | .55" |
| 9D-400-L-25 | LH | Independent two point | .31" thru holes | .55" |
| 9D-400-R-25 | RH | Independent two point | .31" thru holes | .55" |
| 2T-475-L-64 | LH | Offset two point | 1/4" x 20 threaded holes | .50" |
| 2T-475-R-64 | RH | Offset two point | 1/4" x 20 threaded holes | .50" |
| 44T-476-L-21 | LH | Two point w/emergency release | 1/4" x 20 threaded holes | .50" |

- Dual stage
- To be used with a .50" or .55" diameter striker
- Rated to a max load of 750 lbs
- Meets FMVSS 206 Passenger Restraint standards when used and tested with an Eberhard certified striker.

MATERIAL: Steel

FINISH: Zinc plated with fluorocarbon latch pawls

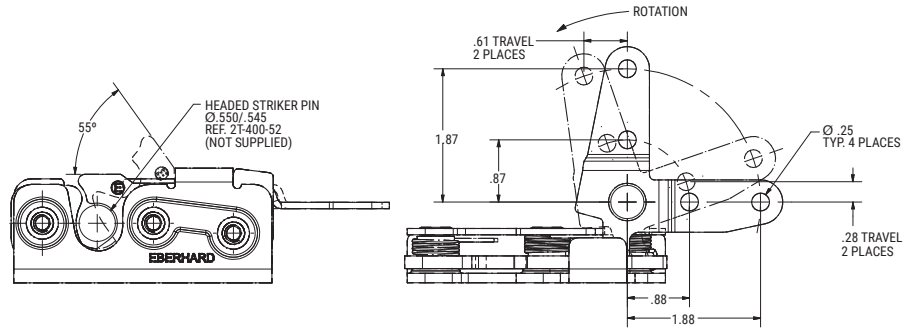


FMVSS LARGE SERIES ROTARY LATCH

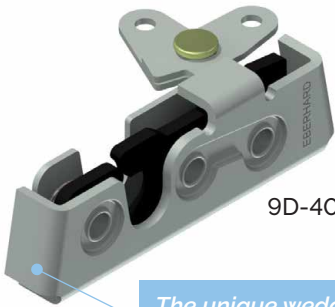
DUAL STAGE ROTARY LATCH



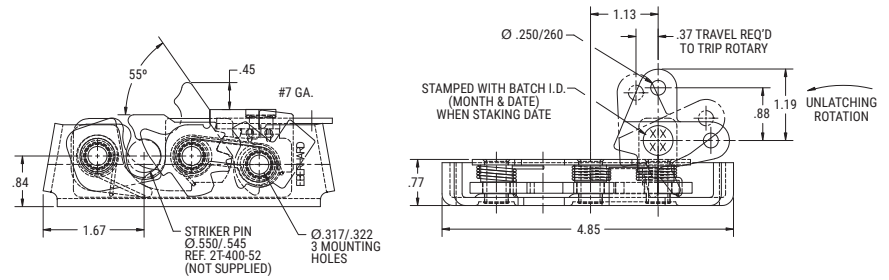
42T-400-R-25



DOVETAIL DESIGN TO BE USED WITH STRIKER BRACKET D-400-53-25 & .55" DIAMETER STRIKER. (see pg 31 for additional details)

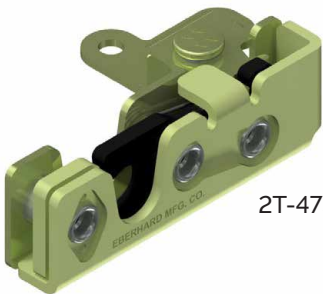


9D-400-R-25

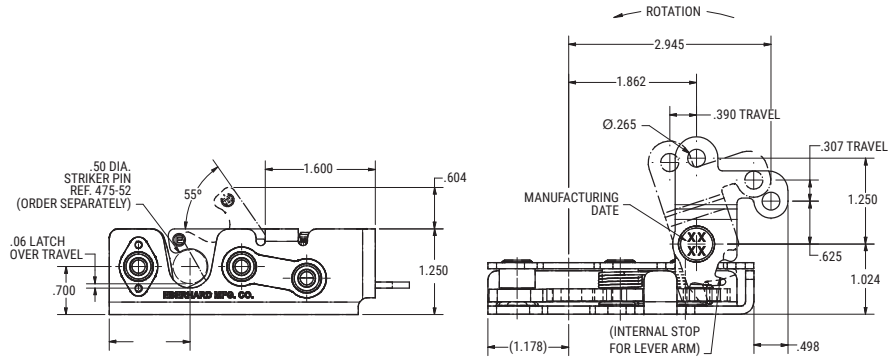


The unique wedge design improves door alignment when slammed closed. This dovetail reduces door sag and assures better latch engagement.

LOW PROFILE DESIGN



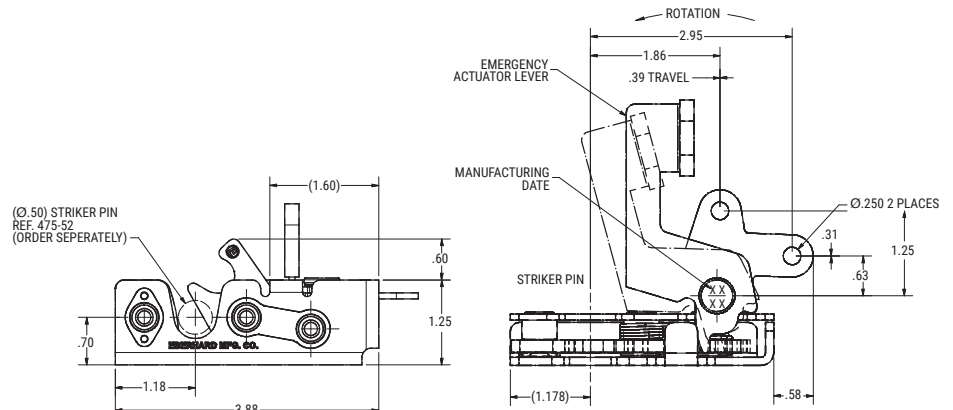
2T-475-R-64



LOW PROFILE DESIGN



44T-476-L-21



EXTRA LARGE ROTARY LATCHES



EXTRA LARGE SERIES ROTARY LATCH

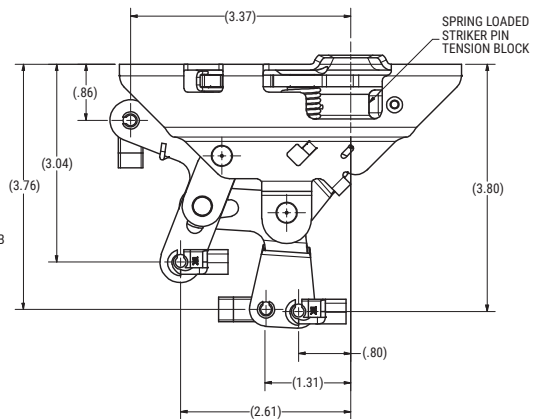
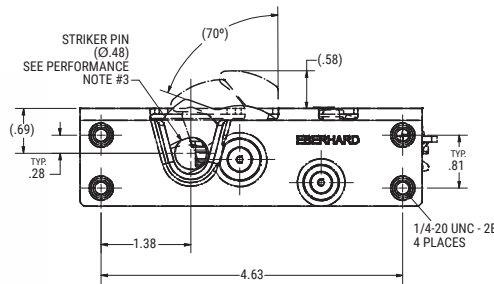
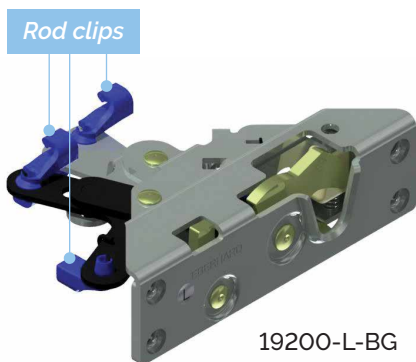
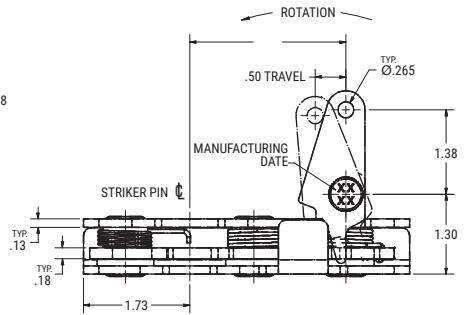
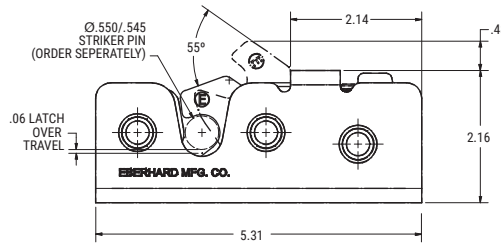
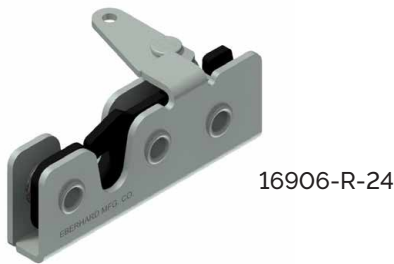
DUAL STAGE ROTARY LATCH

| PART # | HAND | LEVER ARM | MOUNTING | STRIKER SIZE |
|--------------|------|-------------------|-----------------------------|--------------|
| 16906-R-24 | RH | Horizontal | 3/8" thru holes | .55" |
| 16906-L-24 | LH | Horizontal | 3/8" thru holes | .55" |
| 19200-R-BG | RH | Multiple release | 1/4" x 20 threaded holes | .48" |
| 19200-L-BG | LH | Multiple release | 1/4" x 20 threaded holes | .48" |
| 19300-R-BG | RH | Dual release | 1/4" thru holes | .48" |
| 19300-L-BG | LH | Dual release | 1/4" thru holes | .48" |
| 1-19401-R-BG | RH | Multiple release | Mount w/19400 series rotary | n/a |
| 1-19401-L-BG | LH | Multiple release | Mount w/19400 series rotary | n/a |
| 19400-R-BG | RH | n/a | .33" thru holes | .62" |
| 19400-L-BG | LH | n/a | .33" thru holes | .62" |
| 19411-R-65 | RH | 2.3" extended arm | Mount w/19410 series rotary | n/a |
| 19411-L-65 | LH | 2.3" extended arm | Mount w/19410 series rotary | n/a |
| 19410-R-65 | RH | n/a | .27" thru holes | .62" |
| 19410-L-65 | LH | n/a | .27" thru holes | .62" |
| 19421-L-65 | LH | Single | Mount w/19420 series rotary | n/a |
| 19420-L-BG | LH | n/a | .29" thru holes | .62" |

- Dual stage
- Rated to a max load of 750 lbs
- Meets FMVSS 206 Passenger Restraint standards (except 19411 & 19410) when used and tested with an Eberhard certified striker.

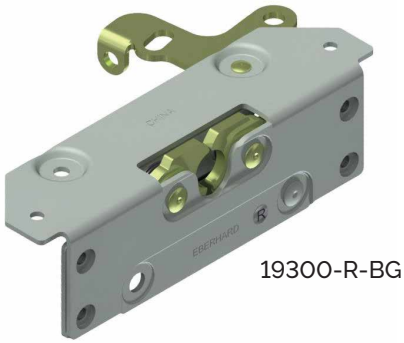
MATERIAL: Steel

FINISH: Zinc plated with fluorocarbon latch pawls

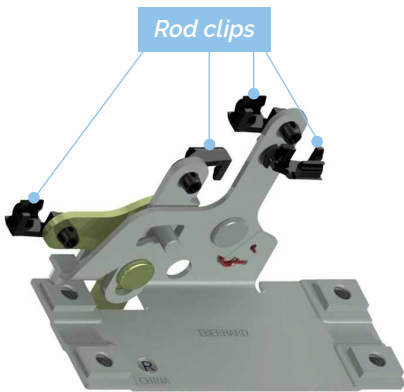
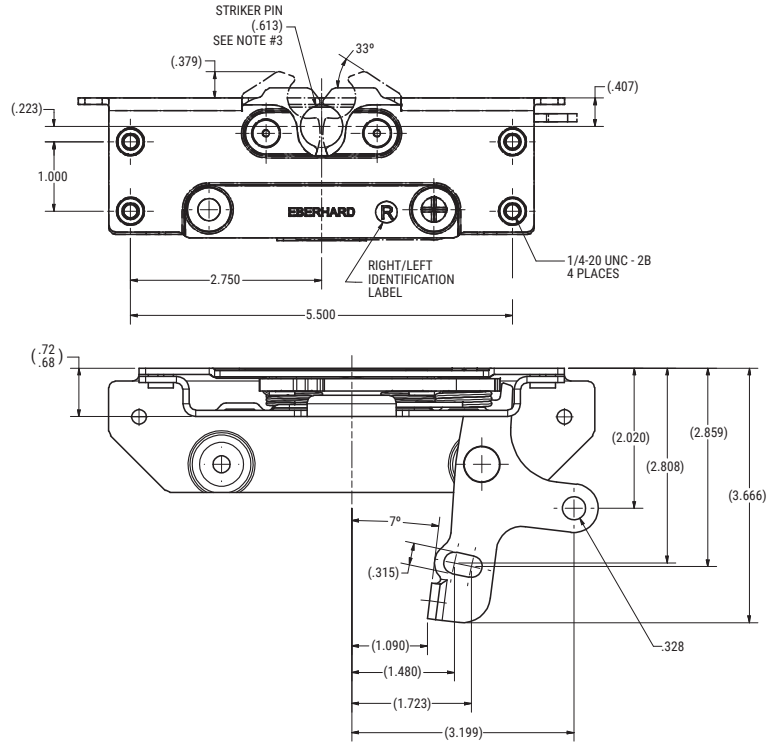


EXTRA LARGE SERIES ROTARY LATCH

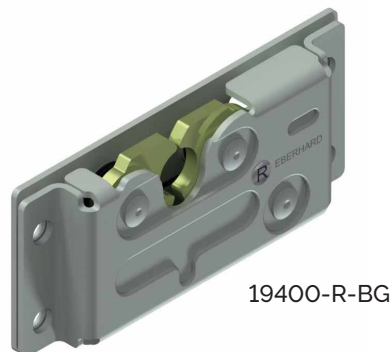
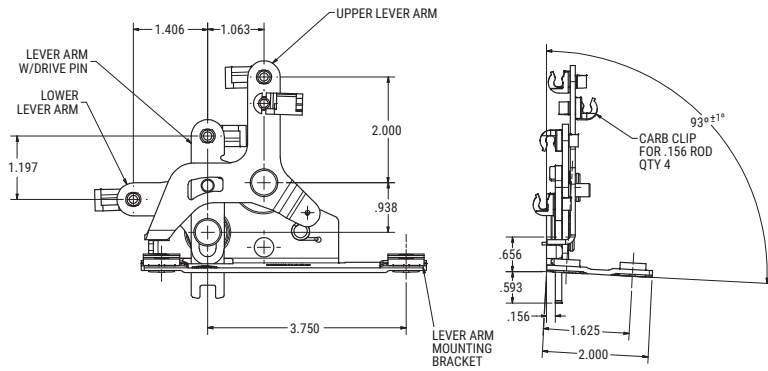
DUAL STAGE ROTARY LATCH



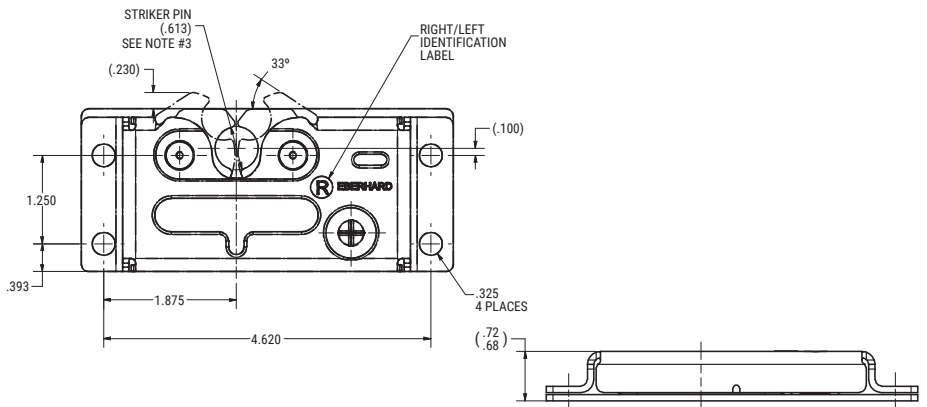
19300-R-BG



1-19401-R-BG

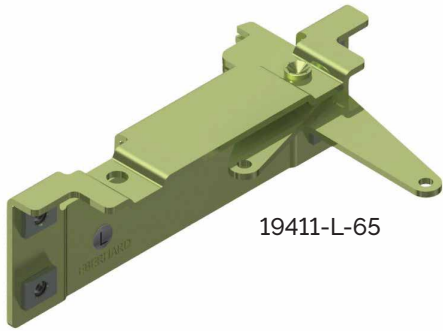


19400-R-BG

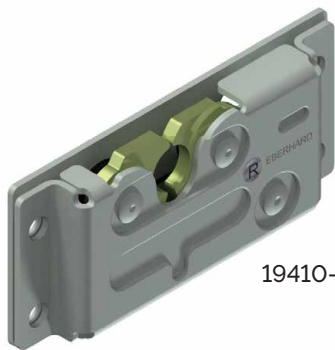
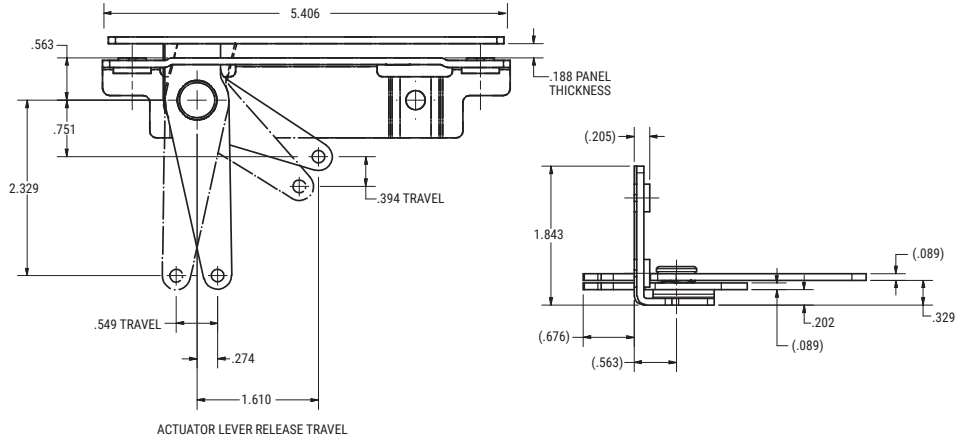


EXTRA LARGE SERIES ROTARY LATCH

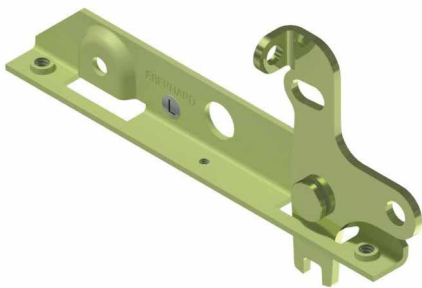
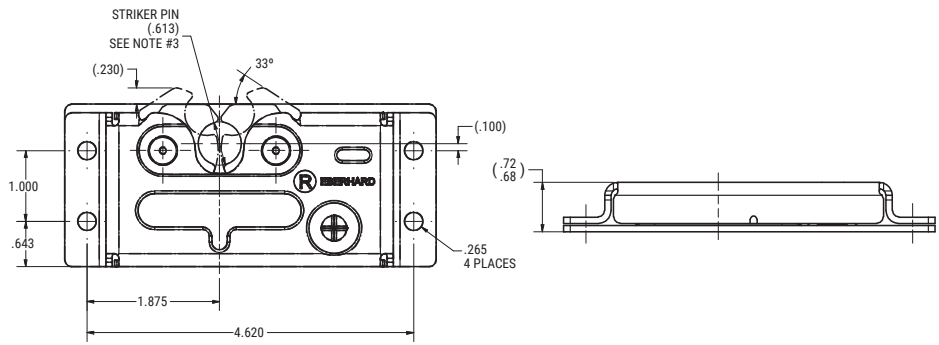
DUAL STAGE ROTARY LATCH



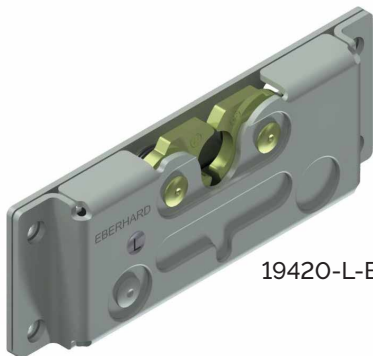
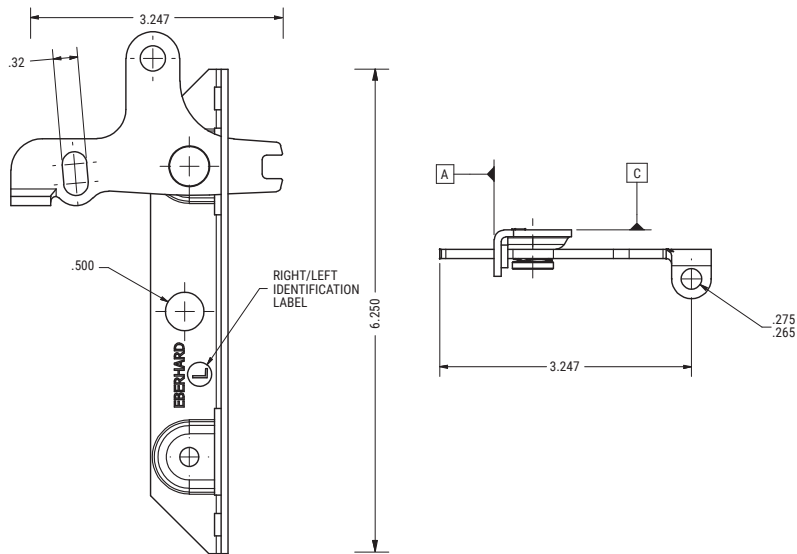
19411-L-65



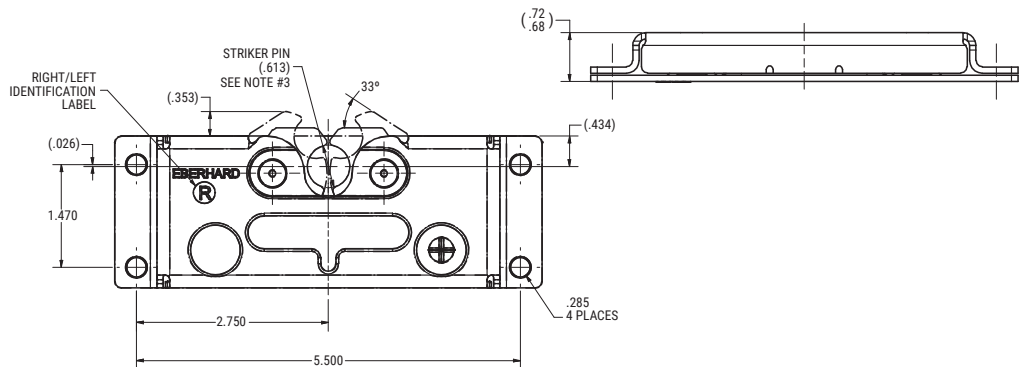
19410-R-BG



19421-L-65



19420-L-BG



ELECTRONIC ROTARY LATCHES



POWER UP SERIES ROTARY LATCH

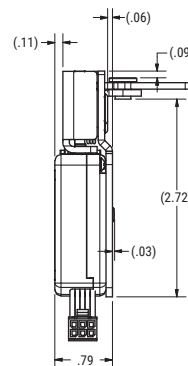
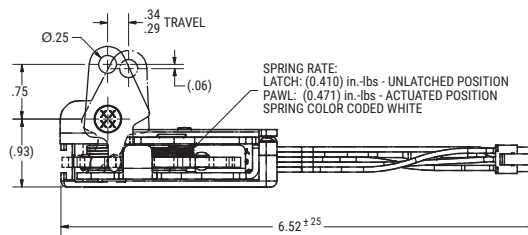
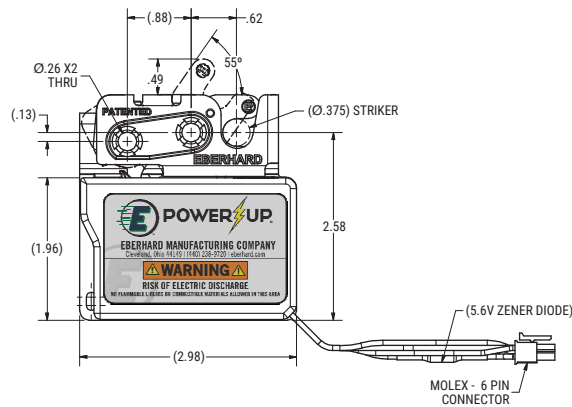
SINGLE OR DUAL STAGE ELECTRONIC ROTARY LATCH

| PART # | HAND | MOUNTING | STRIKER SIZE |
|-------------------|------|-----------------|--------------|
| CM1-16240-NTAL-BG | LH | 1/4" thru holes | .38" |

- To be used with a 3/8" diameter striker
- Operating current 12V DC
- ROHS compliant
- Operating temperature range of -40 degrees Celsius to +80 degrees Celsius.
- Internal micro switch can detect locked position, unlocked position, or locked and unlocked position.
- Single or dual stage
- Does not meet FMVSS 206 Passenger Restraint standards

MATERIAL: Steel

FINISH: Zinc plated with fluorocarbon latch pawls



POWER UP/T-17241 SERIES ROTARY LATCH

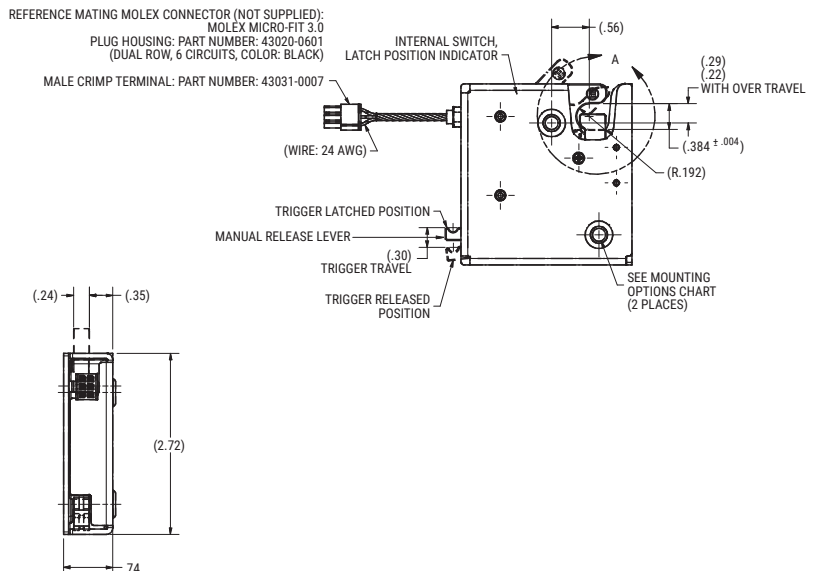
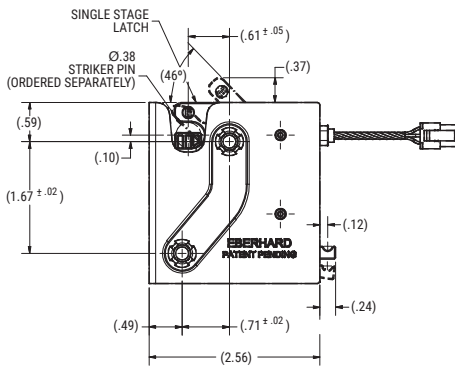
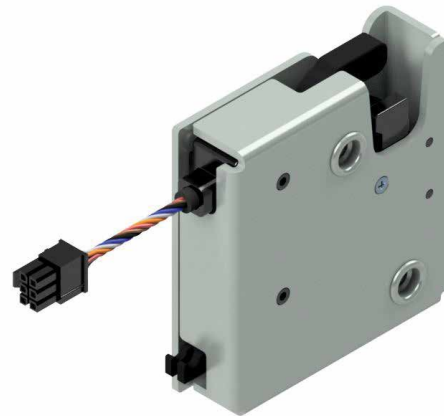
SINGLE STAGE ELECTRONIC ROTARY LATCH

| PART # | RELEASE TYPE | MANUAL TRIGGER | MOUNTING | STRIKER PLUNGER | FEEDBACK RELAY | CONNECTOR | STRIKER SIZE |
|-----------------------|---------------|----------------|--------------------------|-----------------|----------------|-----------|--------------|
| T-17241-PSA-PR1-PK-BG | Power release | Side trigger | 1/4" x 20 threaded holes | Yes | Yes | Yes | .38" |
| T-17241-PSB-PR1-PK-BG | Power release | Side trigger | M6 x 1 threaded holes | Yes | Yes | Yes | .38" |
| 17241-PSC-PR1-PK-BG | Power release | Side trigger | 1/4" thru holes | Yes | Yes | Yes | .38" |
| T-17241-PRA-PR1-PK-BG | Power release | Rear trigger | 1/4" x 20 threaded holes | Yes | Yes | Yes | .38" |
| T-17241-PRB-PR1-PK-BG | Power release | Rear trigger | M6 x 1 threaded holes | Yes | Yes | Yes | .38" |
| 17241-PRC-PR1-PK-BG | Power release | Rear trigger | 1/4" thru holes | Yes | Yes | Yes | .38" |

- Single stage
- To be used with a 3/8" diameter striker
- Works with the i-Lock remote Bluetooth system
- Operating current less than 250 mA at 12V DC
- ROHS and Reach compliant
- Operating temperature range of -20 degrees Celsius to +70 degrees Celsius.
- Internal spring plunger feature to help with releasing the striker pin from the assembly.
- Feedback relay that advises if latch is OPEN or CLOSED.
- Does not meet FMVSS 206 Passenger Restraint standards

MATERIAL: Steel

FINISH: Zinc plated with fluorocarbon latch pawls



LOAD N LOCK SERIES COMPACT ROTARY LATCH

HIGH STRENGTH ELECTRONIC ROTARY LATCH

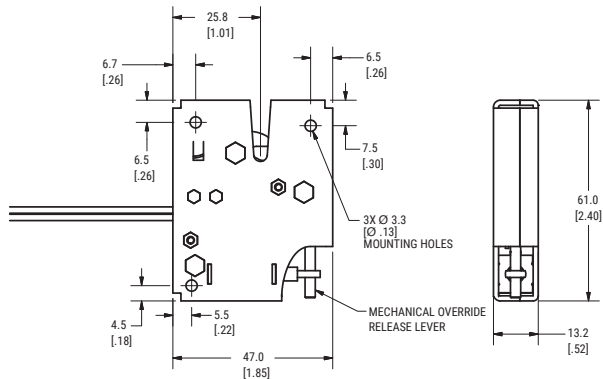
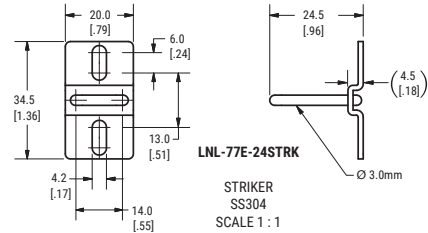
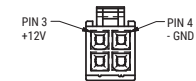
| PART # | CONNECTOR |
|----------------|-----------|
| LNL-77E-4761-3 | Yes |
| LNL-77E-4761-5 | No |

- Operating current 12V DC
- Ultimate tensile load 200 lbs
- Integrated mechanical release
- Versatile concealed latching
- High cycle life
- Operating temperature range of -20 degrees Celsius to +80 degrees Celsius.
- Striker included
- Does not meet FMVSS 206 Passenger Restraint standards

MATERIAL: Steel; Stainless steel striker
FINISH: Black E-coat



MOLEX 39-01-2040 CONNECTOR
SCALE 1.5 : 1



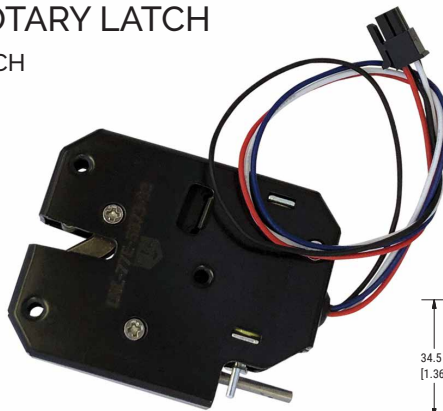
LOAD N LOCK SERIES MEDIUM ROTARY LATCH

HIGH PERFORMANCE ELECTRONIC ROTARY LATCH

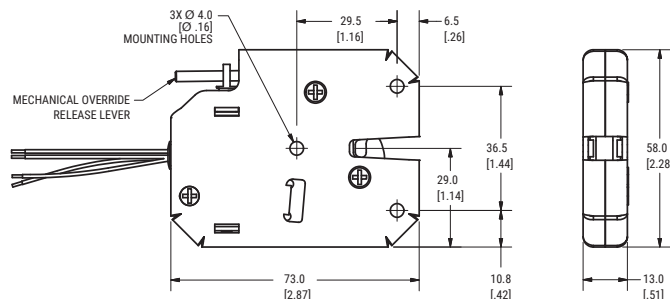
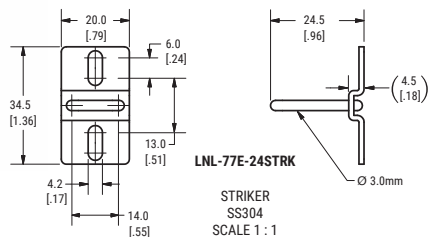
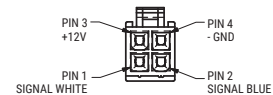
| PART # | SENSOR | CONNECTOR |
|-----------------|--------|-----------|
| LNL-77E-5873-73 | No | Yes |
| LNL-77E-5873-75 | No | No |
| LNL-77E-5873-93 | Yes | Yes |
| LNL-77E-5873-95 | Yes | No |

- Operating current 12V DC
- Ultimate tensile load 500 lbs
- Sensor option detects closed position
- Integrated mechanical override
- High cycle life
- Operating temperature range of -20 degrees Celsius to +80 degrees Celsius.
- Striker included
- Does not meet FMVSS 206 Passenger Restraint standards

MATERIAL: Steel; Stainless steel striker
FINISH: Black E-coat



MOLEX 39-01-2040 CONNECTOR
SCALE 1.5 : 1



LOAD N LOCK SERIES LARGE ROTARY LATCH

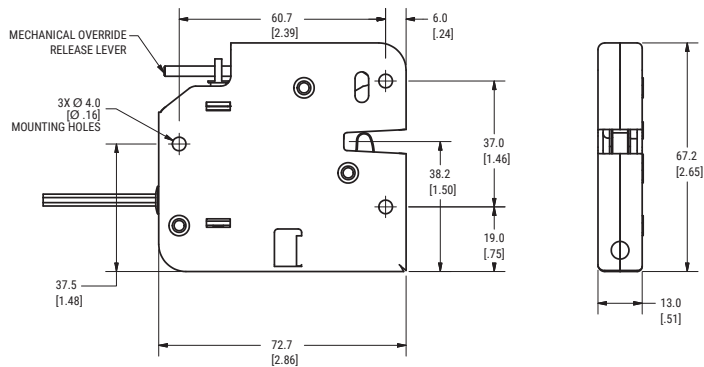
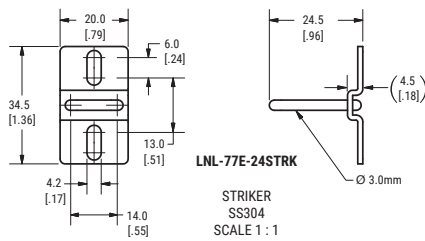
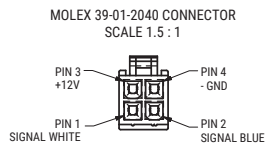
HEAVY DUTY ELECTRONIC ROTARY LATCH

| PART # | SENSOR | CONNECTOR |
|-----------------|--------|-----------|
| LNL-77E-6772-73 | No | Yes |
| LNL-77E-6772-75 | No | No |
| LNL-77E-6772-93 | Yes | Yes |
| LNL-77E-6772-95 | Yes | No |

- Operating current 12V DC
- Ultimate tensile load 600 lbs
- Sensor option detects closed position
- Integrated mechanical override
- High cycle life
- Operating temperature range of -20 degrees Celsius to +80 degrees Celsius.
- Striker included
- Does not meet FMVSS 206 Passenger Restraint standards

MATERIAL: Steel; Stainless steel striker

FINISH: Black E-coat



NON-FMVSS RATED STRIKERS



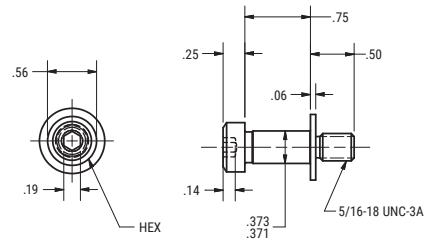
- Does not meet FMVSS 206 Passenger Restraint standards

MATERIAL: Steel

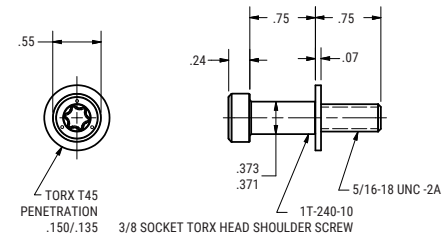
FINISH: Zinc plated; Black E-coat



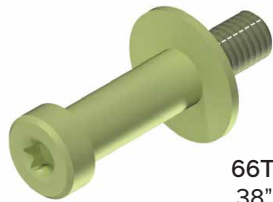
240-52U-25
 .38" diameter, hex drive striker pin & washer assembly.



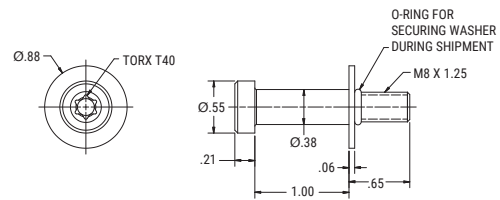
1T-240-52U-64
 .38" diameter, Torx® drive striker pin with washer.



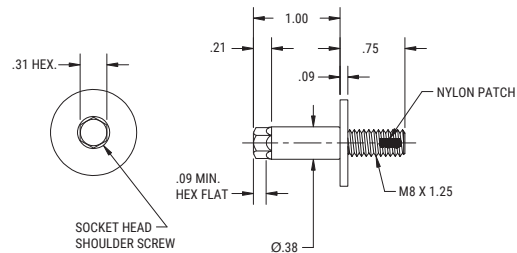
1T-240-10-64
 .38" diameter, Torx® drive striker pin without washer.



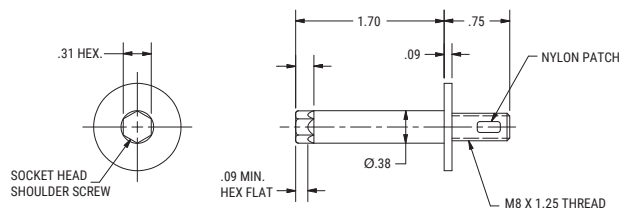
66T-240-52M-64
 .38" diameter, Torx® drive striker pin with washer & O-ring.



63-240-52M-23
 .38" diameter, socket head striker pin with washer & nylon patch. 1" shaft length.

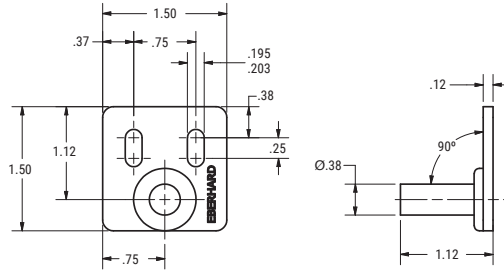


65-240-52M-23
 .38" diameter, socket head striker pin with washer & nylon patch. 1.70" shaft length.

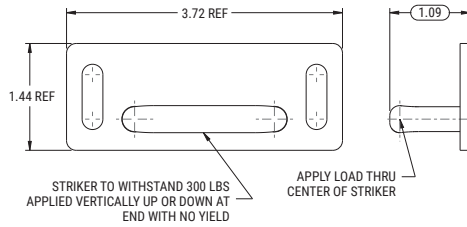




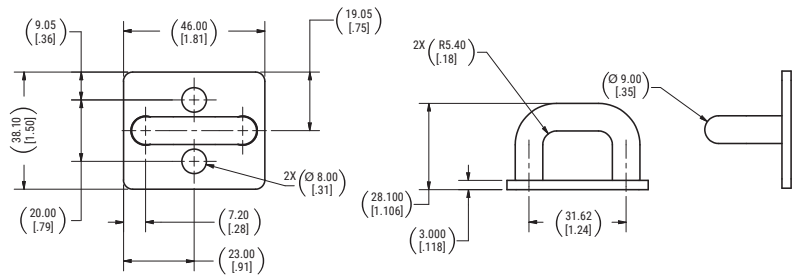
16-240-52-25
 .38" diameter striker pin with adjustable slotted mounting bracket.



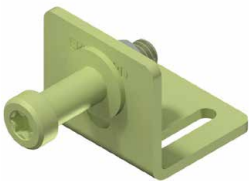
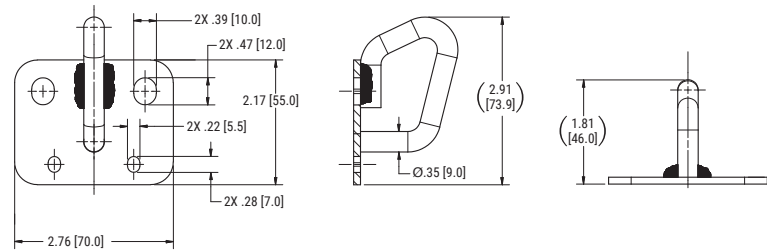
LNL-77-00627
 .365" diameter striker pin & mounting bracket assembly.



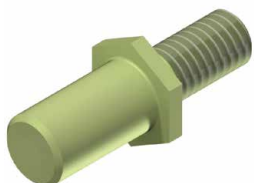
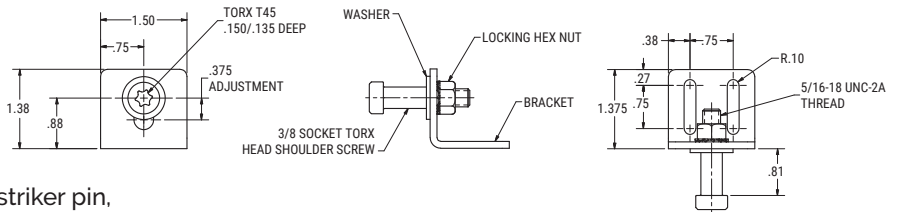
4-16905-37-24
 .35" diameter striker & mounting bracket assembly. Two mounting holes.



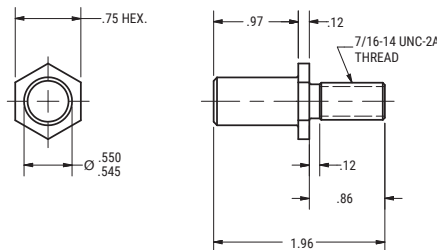
3-16905-37-CZ
 .35" diameter striker & mounting bracket assembly. Four mounting holes.



1-16645-PK-64
 Striker assembly with a .38" diameter, Torx® drive striker pin, .75" horizontal adjustment, & .38" vertical adjustment.



16642-10-64
 .55" diameter headless striker pin with washer.



FMVSS RATED STRIKERS



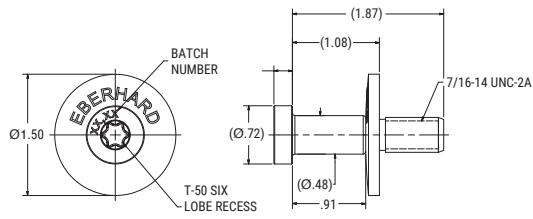
- Meets FMVSS 206 Passenger Restraint standards when used and tested with an Eberhard certified latch assembly.

MATERIAL: Steel

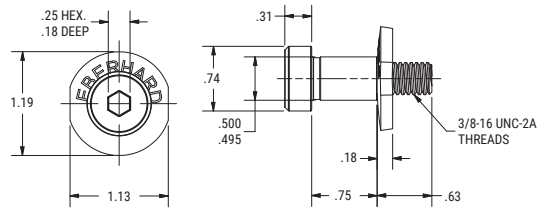
FINISH: Zinc plated



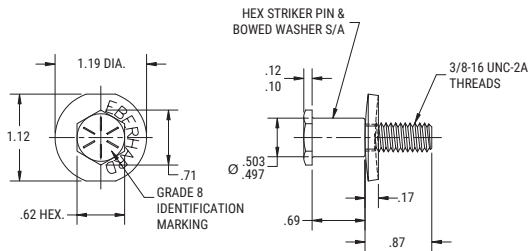
T-19200-52-24
 .48" diameter, six lobe headed
 striker pin & washer assembly.



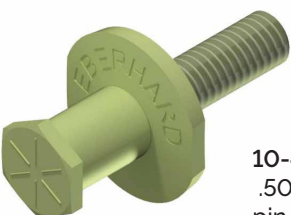
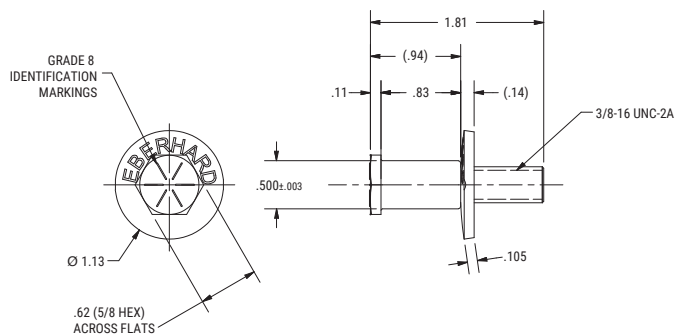
475-52-64
 .50" diameter, hex drive
 striker pin & washer assembly.



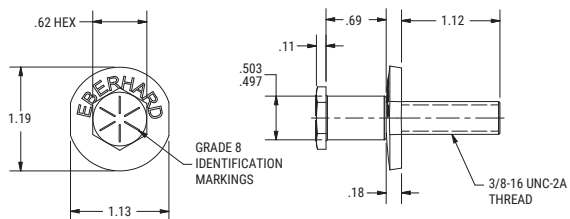
3-475-52-64
 .50" diameter, hex head striker pin
 & washer assembly. 1.67" long.

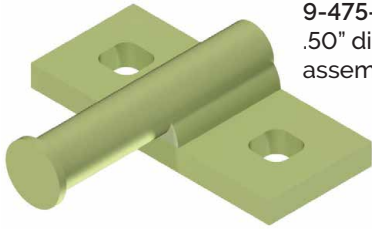


13-475-52-24
 .50" diameter, hex head striker
 pin & washer assembly. 1.81" long.

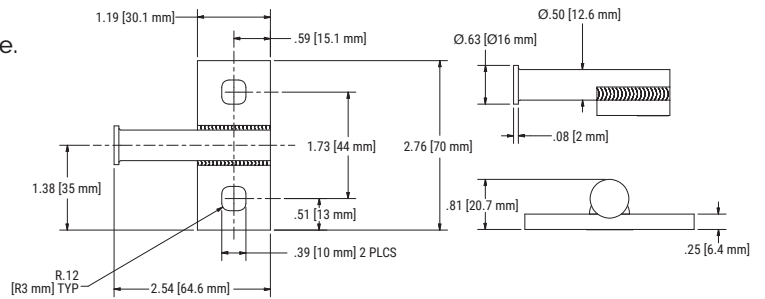


10-475-52-64
 .50" diameter, hex head striker
 pin assembly. 2.10" long.

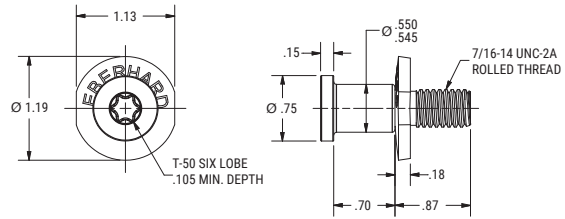




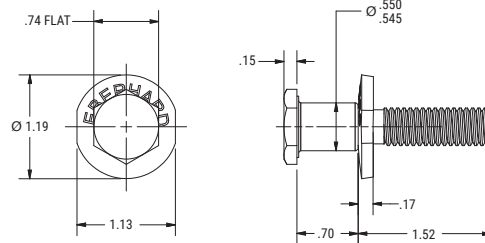
9-475-52-64
 .50" diameter, welded striker assembly with mounting plate.



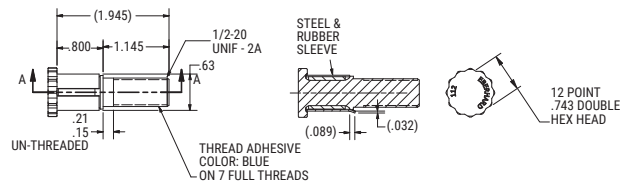
2T-400-52-65
 .55" diameter, six lobe headed striker pin & washer assembly.



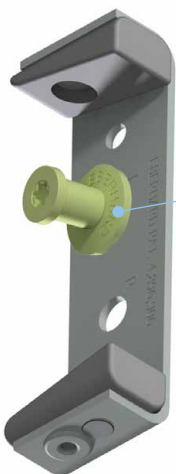
18T-400-52-25
 .55" diameter, hex head striker pin & washer assembly.



12PT-19400-52-65
 .63" diameter, 12 point head, striker pin with sleeve.



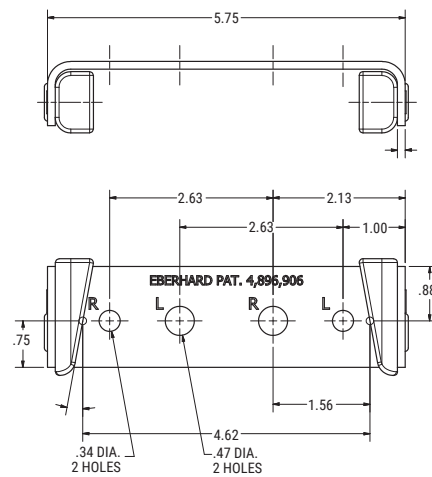
TO BE USED WITH ROTARY 9D-400-R/L-25 & .55" DIAMETER STRIKER.
 (SEE PAGE 16 FOR ROTARY & ABOVE FOR STRIKERS)



D-400-53-25
 Dovetail striker bracket assembly.
 Designed to improve door alignment and assure better latch engagement.

*Striker supplied separately.
 Image for reference only.*

- Mounting holes marked "R" to be used with right hand rotary.
- Mounting holes marked "L" to be used with left hand rotary.
- .47" diameter hole is also locator for striker pin. (To be used with a .55" diameter striker to meet FMVSS standards)



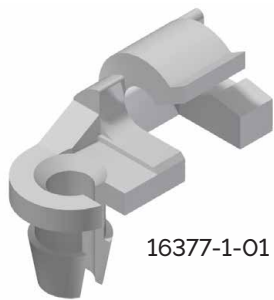
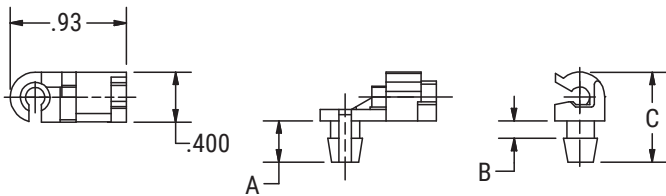
ACCESSORIES



ROD CLIPS

16377 SERIES

| PART # | HAND | COLOR | A | B | C |
|---------|------|---------------|------|------|------|
| 16377-1 | RH | White/Natural | .33" | .14" | .71" |
| 16377-2 | LH | Black | .33" | .14" | .71" |
| 16377-3 | RH | Red | .28" | .08" | .66" |
| 16377-4 | LH | Green | .28" | .08" | .66" |



16377-1-01



16377-2-01



16377-3-01

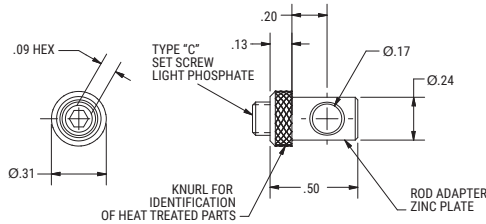


16377-4-01

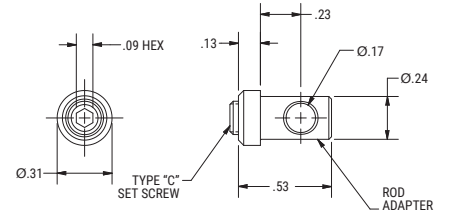
ROD/CABLE ADAPTERS



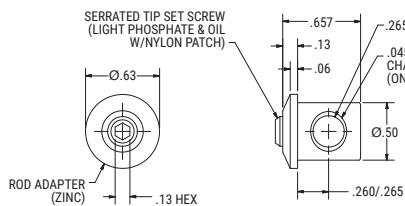
16619-15PK-25



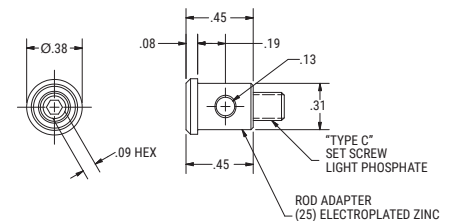
1-16619-15PK-27



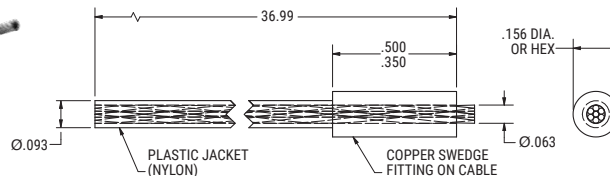
16619-25PK-25



17009-12PK-25



565698-5-01



CONVERSION CHARTS

| FRACTION | INCHES | MM |
|----------|--------|-------|
| 1/32 | .0312 | 0.79 |
| 1/16 | .0625 | 1.58 |
| 3/32 | .0937 | 2.38 |
| 1/8 | .1250 | 3.17 |
| 5/32 | .1562 | 3.97 |
| 3/16 | .1875 | 4.76 |
| 7/32 | .2187 | 5.55 |
| 1/4 | .25 | 6.35 |
| 9/32 | .2812 | 7.14 |
| 5/16 | .3125 | 7.93 |
| 11/32 | .3437 | 8.73 |
| 3/8 | .3750 | 9.52 |
| 13/32 | .4062 | 10.31 |
| 7/16 | .4375 | 11.11 |
| 15/32 | .4687 | 11.90 |
| 1/2 | .5 | 12.70 |

| FRACTION | INCHES | MM |
|----------|--------|-------|
| 17/32 | .5312 | 13.49 |
| 9/16 | .5625 | 14.28 |
| 19/32 | .5937 | 15.08 |
| 5/8 | .6250 | 15.87 |
| 21/32 | .6562 | 16.66 |
| 11/16 | .6875 | 17.46 |
| 23/32 | .7187 | 18.25 |
| 3/4 | .75 | 19.05 |
| 25/32 | .7812 | 19.84 |
| 13/16 | .8125 | 20.63 |
| 27/32 | .8437 | 21.43 |
| 7/8 | .8750 | 22.22 |
| 29/32 | .9062 | 23.01 |
| 15/16 | .9375 | 23.81 |
| 31/32 | .9687 | 24.60 |
| 1 | 1.00 | 25.40 |

Equivalents:
 1 in = 2.54 cm
 1 cm = .3937 in

| TO CONVERT | INTO | MULTIPLY BY | TO CONVERT | INTO | MULTIPLY BY |
|-------------------|---------------|-------------|----------------|-------------------|-------------|
| FEET | INCHES | 12 | METERS | INCHES | 39.37 |
| FEET | MILLIMETERS | 304.8 | METERS | FEET | 3.281 |
| FEET | METERS | 0.3048 | MILLIMETERS | METERS | 0.001 |
| FOOT-POUNDS | NEWTON-METERS | 1.356 | MILLIMETERS | INCHES | 0.03937 |
| INCHES | MILLIMETERS | 25.4 | MILLIMETERS | FEET | 0.003281 |
| INCHES | METERS | 0.0254 | NEWTONS | KILOGRAMS (FORCE) | 0.102 |
| INCHES | FEET | 0.08333 | NEWTONS | POUNDS (FORCE) | 0.2248 |
| INCH-POUNDS | NEWTON-METERS | 0.113 | NEWTON-METERS | INCH-POUNDS | 8.851 |
| KILOGRAMS (FORCE) | NEWTONS | 9.807 | NEWTON-METERS | FOOT-POUNDS | 0.7376 |
| KILOGRAMS (MASS) | POUNDS (MASS) | 2.205 | POUNDS (MASS) | KILOGRAMS (MASS) | 0.4536 |
| METERS | MILLIMETERS | 1000 | POUNDS (FORCE) | NEWTONS | 4.448 |

FINISH CODES

| CODE | FINISH | CODE | FINISH | CODE | FINISH |
|------|----------------------------|------|----------------------------|------|--------------------|
| 64 | Zinc with yellow converter | 23 | E-coat (electrocoat) | 24 | Electroplated zinc |
| 36 | Electroplated zinc, black | 54 | Fluorocarbon | 25 | Electroplated zinc |
| BG | Bearing grease | 22 | Passivated stainless steel | 21 | Plastisol finish |

TERMS & CONDITIONS

Pricing. Prices and specifications are subject to change without notice and are valid only on the day the order is placed. Eberhard Website prices, e-mail offers and other advertisements are subject to correction. Published prices do not include shipping, sales tax and insurance. Proof of purchase and postage may be required for rebates.

Shipment. Delivery dates are estimates only and are based on manufacturer inventory and normal shipping conditions (shipping conditions and actual ship dates may vary). Shipping and handling charges will be added to the price of any products and/or services purchased by Internet Purchase Order via the Eberhard Website. Eberhard reserves the right to make partial shipments until a purchase order is shipped complete. Eberhard will notify you if products and/or services have been discontinued and/or are no longer available, and such products and/or services will be cancelled from pending purchase orders with a credit for any paid, but unshipped products and/or services.

Risk of Loss. All products and/or services purchased from the Eberhard Website are made pursuant to a shipment contract. This means that the risk of loss and title for such items pass to you upon Eberhard's delivery to the carrier, at Eberhard's shipping point. Eberhard will not be responsible for goods lost in transit. Purchaser is solely responsible for filing claims with the carrier for losses. Claims for shortages in shipment not chargeable to the carrier must be reported within ten (10) days from receipt of merchandise.

Eberhard Products and Services. Eberhard reserves the right to modify and/or discontinue products and/or services, at any time, and at Eberhard's sole discretion.

Return Policy. If you are not satisfied with your purchase and you return products within thirty (30) days of receipt, you may exchange the product or receive a refund or credit, according to this Return Policy, provided the returned products are in the same condition as the date shipped ("as new" condition), and returned in the original box and packaging, along with a copy of the Internet Purchase Order, shipping documents, proof of delivery, and any warranty cards. No Eberhard product or part can be returned for credit unless written authorization has been given in advance. Merchandise returned must be identified as to the original date of purchase, purchase order number, and shipper's name and address. Service and handling charge is 15% of net billing price, except in the case of defective parts. Any freight paid by Illinois Lock will be deducted from the amount of credit issued, except in the case of defective parts. Merchandise returned in unsaleable condition will not be acceptable. The return of obsolete, discontinued, modified or special parts is not permissible. Eberhard reserves the right to charge for all work completed or materials purchased when an order is canceled or reduced prior to shipment, where special or modified parts are involved. Eberhard reserves the right to assess an additional cancellation charge, other than the normal 15% handling charge, in the event the quantity canceled is in excess of our normal stock requirements. Prices are subject to change in the event purchaser receives original order quantity.

Limited Warranty. Eberhard strives to produce quality products at reasonable prices. If you are not satisfied with our product because of a defect, we will repair or replace the defective part or parts free of charge for a period of one year from the date of purchase. In the event you claim that the product contains a defect, simply notify Eberhard of the defect, and we will arrange for repair or replacement. The sole and exclusive remedy against Eberhard relating in any way to a product defect shall be the repair or replacement of defective parts as provided for under this LIMITED WARRANTY. No other remedy, including, but not limited to, incidental or consequential loss, is available. This LIMITED WARRANTY shall not be deemed to have failed of its essential purpose so long as Eberhard is willing and able to repair or replace defective parts in the manner prescribed in this LIMITED WARRANTY. Any action for breach relating to the sale of an Eberhard product must be commenced within one year after the cause of action has accrued. This LIMITED WARRANTY IS IN LIEU OF ANY OTHER WARRANTY, EXPRESS OR IMPLIED, AND ALL SUCH WARRANTIES ARE EXCLUDED, INCLUDING, BUT NOT LIMITED TO, ANY IMPLIED WARRANTY OF MERCHANTABILITY OR FITNESS FOR A PARTICULAR PURPOSE.

INTERESTED IN LEARNING MORE?

**Schedule a solution seminar with our expert staff.
Email sales@eberhard.com for more information.**



EBERHARD®

ROTARY LATCH CATALOG 2022

21944 Drake Road | Strongsville, OH 44149-9712 | 800-334-6706 | eberhard.com | sales@eberhard.com | 10.22