



# EBERHARD®

[ ENGINEERED : ACCESS : SOLUTIONS ]



ELECTRONIC



FMVSS



DOVETAIL



MINI



## ROTARY LATCH & STRIKER

PRODUCT CATALOG 2022



# EBERHARD MANUFACTURING

Established in 1877, The Eberhard Manufacturing Company is a global leader in the engineering and manufacturing of access & security hardware. We have a standard product line of rotary latches, compression latches, draw latches, hinges, cam locks, key switches, padlocks, and handles to name a few. We also offer full development and program management services for custom electromechanical and mechanical systems designed for specific OEM's and customer applications. Our products are found in an expansive range of applications and products globally, virtually unnoticed in our everyday lives. Typically, you are never more than 6 feet from one of our solutions.

The Eberhard Manufacturing Company is a registered ISO9001:2015 and ISO14001:2015 company based in Strongsville, Ohio. Our core manufacturing capabilities are in die-casting, injection molding, stamping, machining and final assembly. Our passion for engineering drives us forward. Developing new products to meet our customer's design challenges is our main objective. Adding haptics and functionality to our products ultimately supports our customer's brand equity and increases the value of their end products.

Eberhard is a division of The Eastern Company (Nasdaq stock ticker EML).

## LOCATIONS

### USA

**Design & Manufacturing Center**  
Eberhard Manufacturing Company  
21944 Drake Road  
Strongsville, OH 44149-9712

**Sales & Engineering**  
Eberhard Manufacturing Company  
3930 N Ventura Drive  
Arlington Heights, IL 60004

### CHINA

**Manufacturing**  
Eberhard – Dongguan  
Building 13, No. 199 Pulong Road, Tangxia Town  
Shenzhen Shi Guangdong Sheng Dongguan City,  
Guangdong Province 523719, China

**Manufacturing**  
Eberhard – Eastern Industrial, Ltd. (Shanghai)  
20 Lane 2248 Liuxiang Road  
Shanghai, China 201801

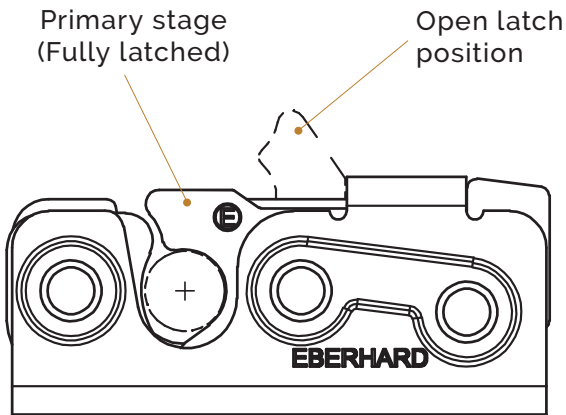
### MEXICO

**Manufacturing**  
Eberhard – IGS Reynosa  
Pharr Br Bldg 1-B  
Avenida Mike Allen #1011-B  
Fraccionamiento Parque Industrial Reynosa  
Tamaulipas, MX

## COMPACT ROTARY LATCHES

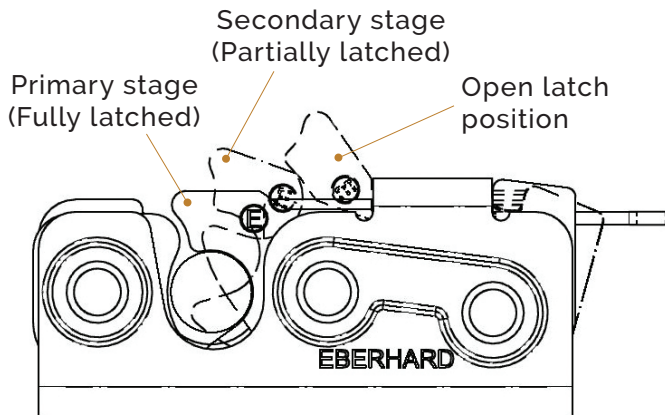


## SINGLE STAGE ROTARY vs DUAL STAGE ROTARY



### Single Stage latch

The latch has one latched position. The latch is either open or fully latched.



### Dual Stage latch

The latch has two latched positions. The fully latched position and the partially latched position to prevent a false latching condition.

See pages 27-28 for recommended 3/8" diameter strikers

## 200 SERIES COMPACT ROTARY LATCH

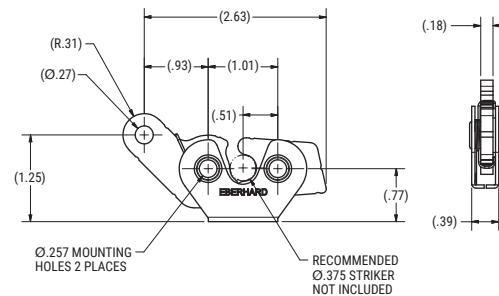
### SINGLE STAGE ROTARY LATCH

PART #	MOUNTING	STRIKER SIZE
200-64	1/4" thru holes	.38"

- Single stage
- To be used with a 3/8" diameter striker
- Rated to a max load of 500 lbs
- Does not meet FMVSS 206 Passenger Restraint standards

**MATERIAL:** Steel

**FINISH:** Zinc plated with fluorocarbon latch pawls



200-64

## MINI ROTARY LATCHES



## 231 SERIES MINI ROTARY LATCH

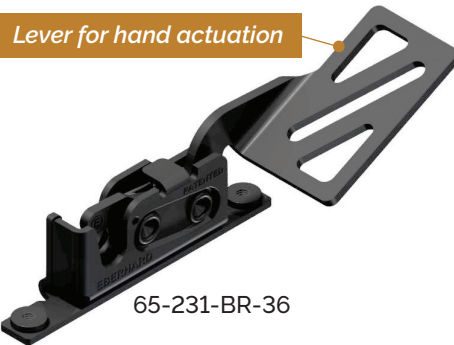
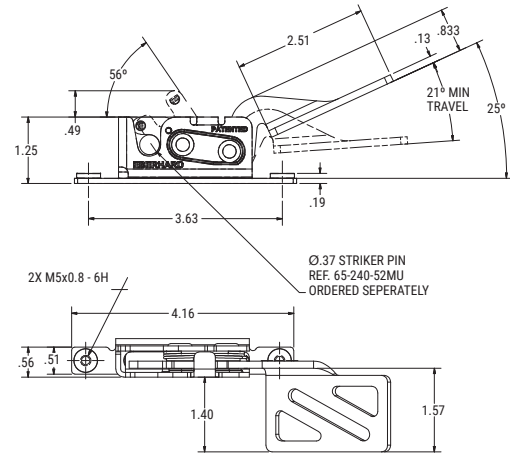
### SINGLE STAGE ROTARY LATCH

PART #	HAND	MOUNTING	STRIKER SIZE
65-231-BR-36	RH	M5 x .8 threaded holes	.38"
65-231-BL-36	LH	M5 x .8 threaded holes	.38"
77-231-MR-BG	RH	M6 x 1 threaded holes	.38"
77-231-ML-BG	LH	M6 x 1 threaded holes	.38"
79-231-ML-BG	LH	M6 x 1 threaded holes	.38"

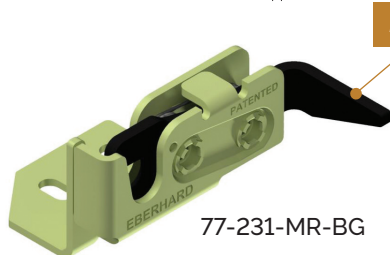
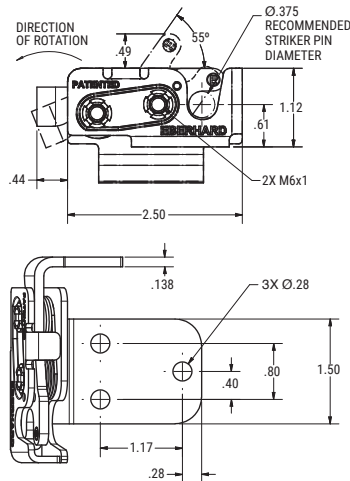
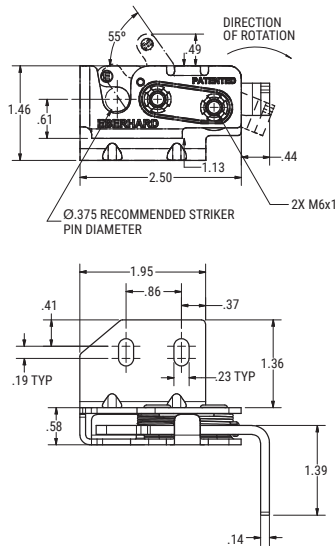
- Single stage
- To be used with a 3/8" diameter striker
- Rated to a max load of 750 lbs
- Does not meet FMVSS 206 Passenger Restraint standards

**MATERIAL:** Steel

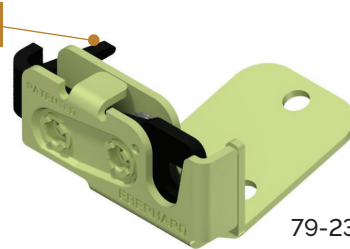
**FINISH:** Zinc plated with fluorocarbon latch pawls



65-231-BR-36



77-231-MR-BG



79-231-ML-BG

## 231 SERIES MINI ROTARY LATCH

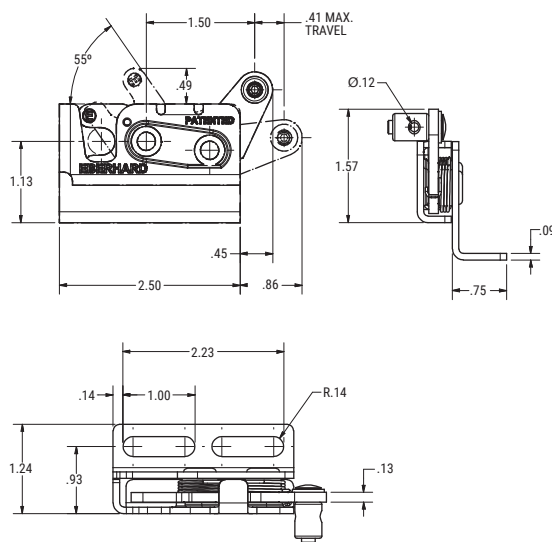
### SINGLE STAGE ROTARY LATCH

PART #	HAND	MOUNTING	STRIKER SIZE
88-231-R-64	RH	Mounting bracket	.38"
58B-231-R-23	RH	Mounting bracket	.38"
58B-231-L-23	LH	Mounting bracket	.38"

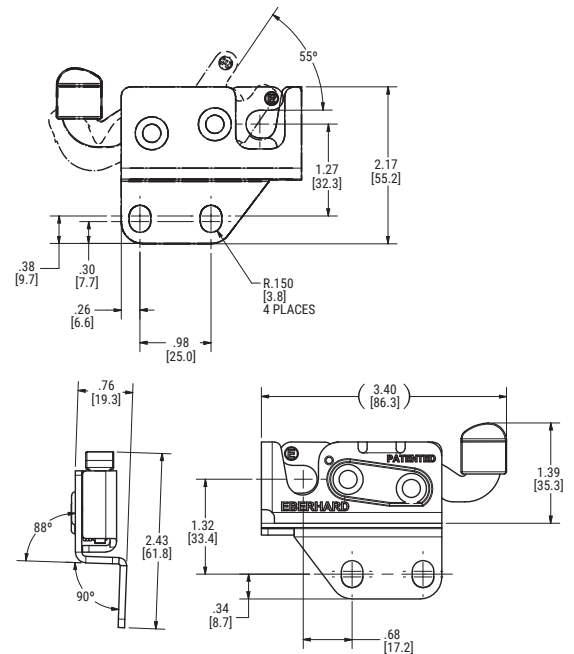
- Single stage
- To be used with a 3/8" diameter striker
- Rated to a max load of 750 lbs
- Does not meet FMVSS 206 Passenger Restraint standards

**MATERIAL:** Steel

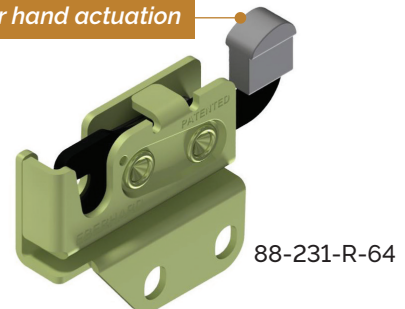
**FINISH:** Zinc plated with fluorocarbon latch pawls; Black E-coat



Cable/rod adapter  
with set screw



Lever for hand actuation



## 240 SERIES MINI ROTARY LATCH

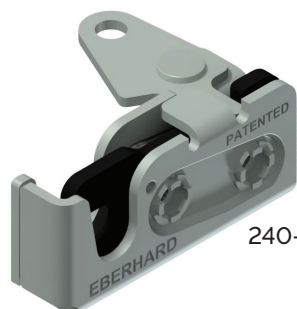
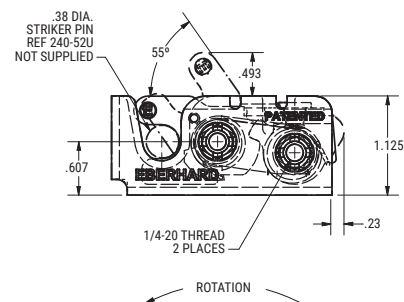
### SINGLE & DUAL STAGE ROTARY LATCHES

PART #	HAND	MATERIAL	FINISH	LEVER ARM	MOUNTING	SINGLE/DUAL STAGE	SPRING	STRIKER SIZE
240-L-54	LH	Steel	Zinc	Horizontal	1/4" x 20 threaded holes	Dual	Standard	.38"
240-R-54	RH	Steel	Zinc	Horizontal	1/4" x 20 threaded holes	Dual	Standard	.38"
241-SSL-22	LH	Stainless steel	Passivated	Horizontal	1/4" x 20 threaded holes	Single	Standard	.38"
1-240-L-54	LH	Steel	Zinc	Horizontal w/bend	1/4" x 20 threaded holes	Dual	Standard	.38"
1-240-R-54	RH	Steel	Zinc	Horizontal w/bend	1/4" x 20 threaded holes	Dual	Standard	.38"
1-241-L-54	LH	Steel	Zinc	Horizontal w/bend	1/4" x 20 threaded holes	Single	Standard	.38"
1-241-R-54	RH	Steel	Zinc	Horizontal w/bend	1/4" x 20 threaded holes	Single	Standard	.38"
1-241-NTR-54	RH	Steel	Zinc	Horizontal w/bend	1/4" thru holes	Single	Standard	.38"
2-241-NTL-54	LH	Steel	Zinc	Horizontal	1/4" x thru holes	Single	Standard	.38"
2-241-NTR-54	RH	Steel	Zinc	Horizontal	1/4" x thru holes	Single	Standard	.38"
8-240-L-54	LH	Steel	Zinc	Vertical	1/4" x 20 threaded holes	Dual	Standard	.38"
8-240-R-54	RH	Steel	Zinc	Vertical	1/4" x 20 threaded holes	Dual	Standard	.38"
8-241-L-54	LH	Steel	Zinc	Vertical	1/4" x 20 threaded holes	Single	Standard	.38"
8-241-R-54	RH	Steel	Zinc	Vertical	1/4" x 20 threaded holes	Single	Standard	.38"
8-240-ML-54	LH	Steel	Zinc	Vertical	M6 x 1 threaded holes	Dual	Standard	.38"
8-240-MR-54	RH	Steel	Zinc	Vertical	M6 x 1 threaded holes	Dual	Standard	.38"
8-240-SSL-22	LH	Stainless steel	Passivated	Vertical	1/4" x 20 threaded holes	Dual	Standard	.38"
8-240-SSR-22	RH	Stainless steel	Passivated	Vertical	1/4" x 20 threaded holes	Dual	Standard	.38"
11-240-L-54	LH	Steel	Zinc	Horizontal	1/4" x 20 threaded holes	Dual	Standard	.38"
11-240-R-54	RH	Steel	Zinc	Horizontal	1/4" x 20 threaded holes	Dual	Standard	.38"
12-240-L-24	LH	Steel	Zinc	4.25" ext. horizontal	1/4" x 20 threaded holes	Dual	Standard	.38"
12-240-R-24	RH	Steel	Zinc	4.25" ext. horizontal	1/4" x 20 threaded holes	Dual	Standard	.38"
76-241-ML-BG	LH	Steel	Zinc	Vertical	M6 x 1 threaded holes	Single	Standard	.38"
8-247-BL-54	LH	Steel	Zinc	Vertical	1/4" x 20 threaded holes	Single	Heavy	.38"
8-247-BR-54	RH	Steel	Zinc	Vertical	1/4" x 20 threaded holes	Single	Heavy	.38"
33-248-MBR-36	RH	Steel	Zinc	Horizontal, stepped	M6 x 1 threaded holes	Dual	Standard	.38"

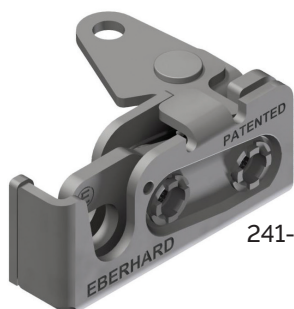
- Single or dual stage
- To be used with a 3/8" diameter striker
- Rated to a max load of 750 lbs
- Optional rubber snubber
- Does not meet FMVSS 206 Passenger Restraint standards

**MATERIAL:** Steel; Stainless steel

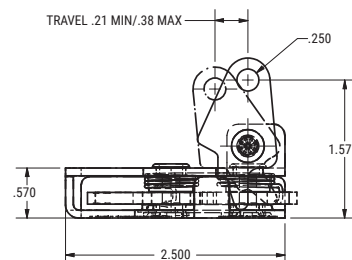
**FINISH:** Zinc or polished with fluorocarbon latch pawls



240-R-54

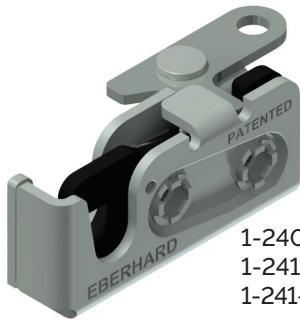


241-SSR-22

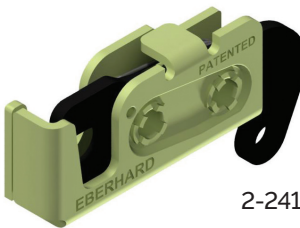
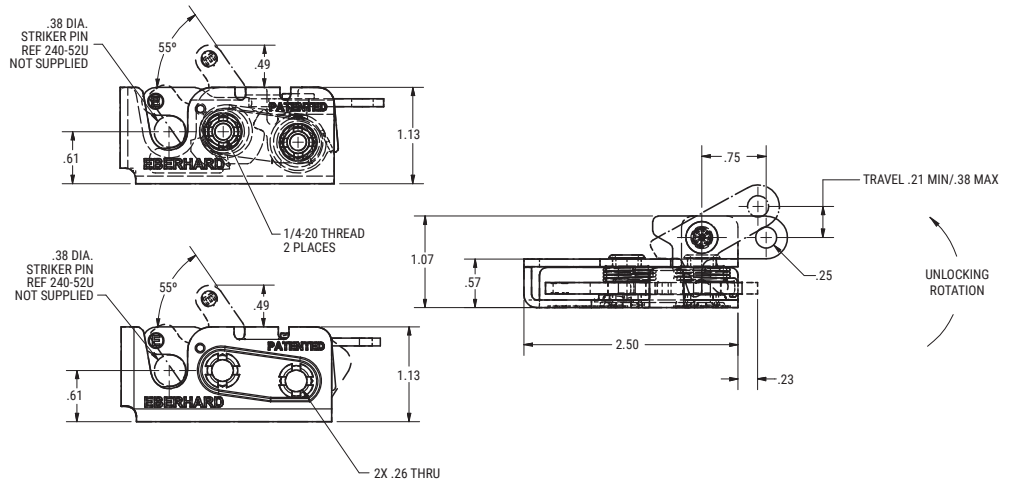


## 240 SERIES MINI ROTARY LATCH

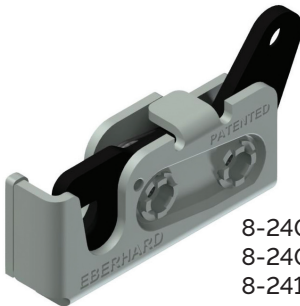
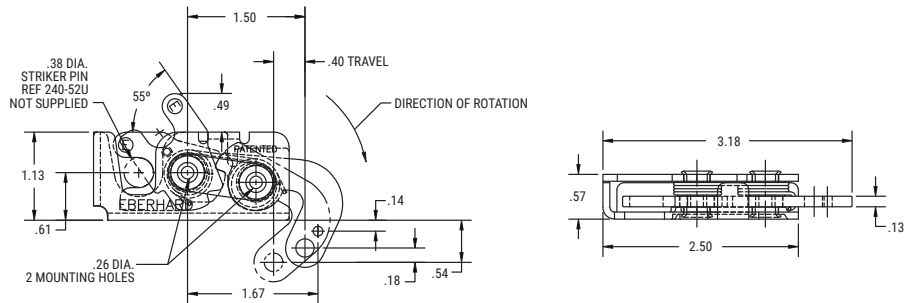
SINGLE & DUAL STAGE ROTARY LATCHES



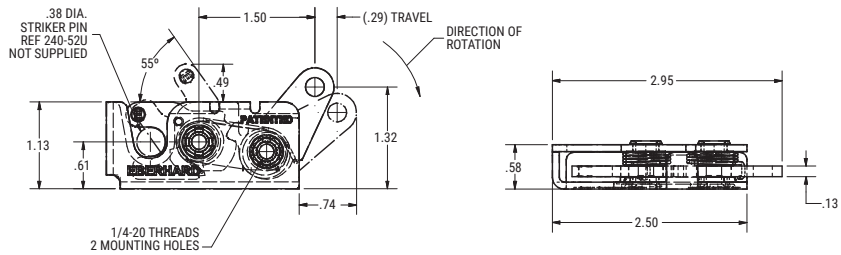
1-240-R-54  
1-241-R-54  
1-241-NTR-54



2-241-NTR-54



8-240-R-54  
8-240-MR-54  
8-241-R-54

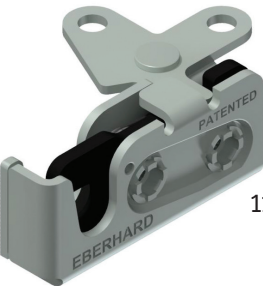


8-240-SSR-22

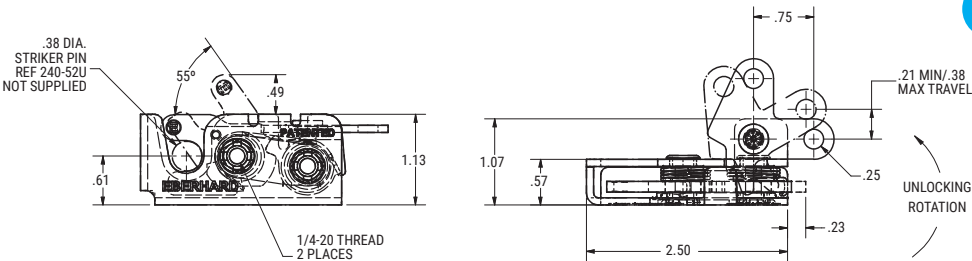
STAINLESS STEEL TO HELP PREVENT CORROSION

# 240 SERIES MINI ROTARY LATCH

## SINGLE & DUAL STAGE ROTARY LATCHES

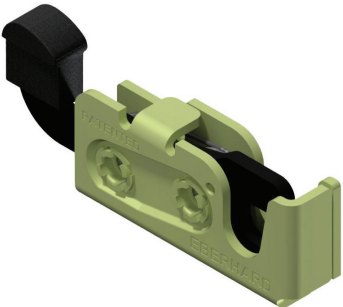
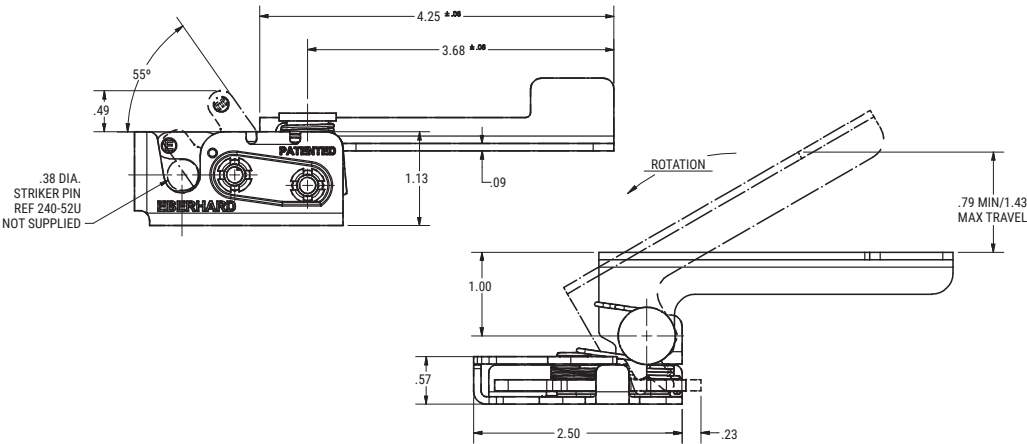


11-240-R-54

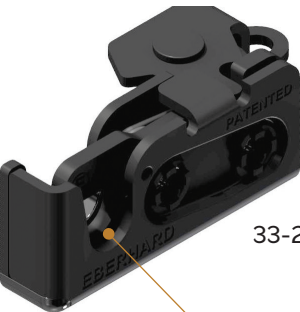
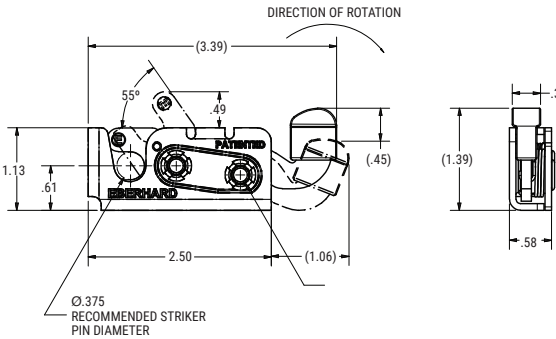


12-240-R-24

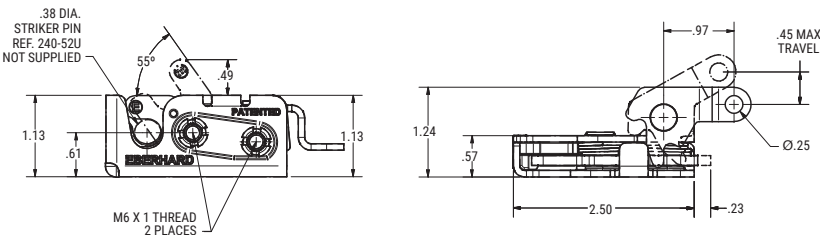
Lever for hand actuation



76-241-ML-BG



33-248-MBR-36



RUBBER SNUBBER FOR ANTI-RATTLE  
Can be added to any 230/231/240/241 Series rotaries

## LOAD N LOCK MINI SERIES ROTARY LATCH

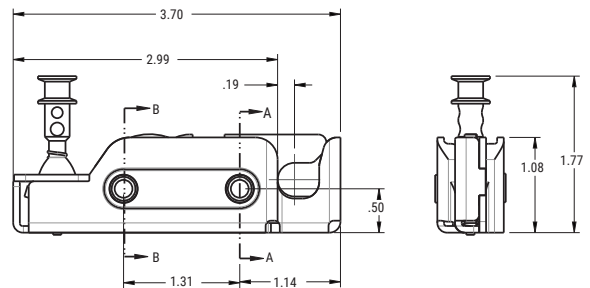
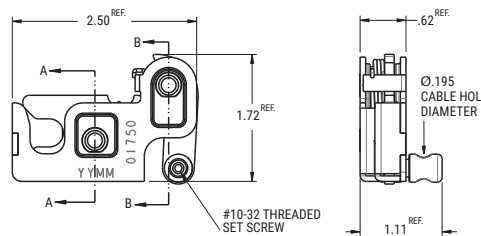
### SINGLE STAGE ROTARY LATCH

PART #	HAND	LEVER ARM	MOUNTING	SPRING	STRIKER SIZE
LNL-77-01751	LH	Bottom eyelet & set screw	1/4" x 20 threaded holes	Light	.38"
LNL-77-01750	RH	Bottom eyelet & set screw	1/4" x 20 threaded holes	Light	.38"
LNL-77-00751	LH	Bottom eyelet & set screw	1/4" x 20 threaded holes	Standard	.38"
LNL-77-00750	RH	Bottom eyelet & set screw	1/4" x 20 threaded holes	Standard	.38"
LNL-77-00046	n/a	360° Joystick	1/4" x 20 threaded holes	Standard	.38"
LNL-77-00289	LH	Bottom eyelet & set screw	1/4" x 20 threaded holes	Standard	.38"
LNL-77-00287	RH	Bottom eyelet & set screw	1/4" x 20 threaded holes	Standard	.38"
LNL-77-01945	LH	Bottom eyelet & set screw	Mounting bracket	Heavy	.38"
LNL-77-01944	RH	Bottom eyelet & set screw	Mounting bracket	Heavy	.38"
LNL-77-01956	LH	Bottom eyelet & set screw	Mounting bracket	Heavy	.38"
LNL-77-01955	RH	Bottom eyelet & set screw	Mounting bracket	Heavy	.38"
LNL-77-00791	LH	Bottom eyelet & set screw	1/4" x 20 threaded holes	Heavy	.38"
LNL-77-00790	RH	Bottom eyelet & set screw	1/4" x 20 threaded holes	Heavy	.38"

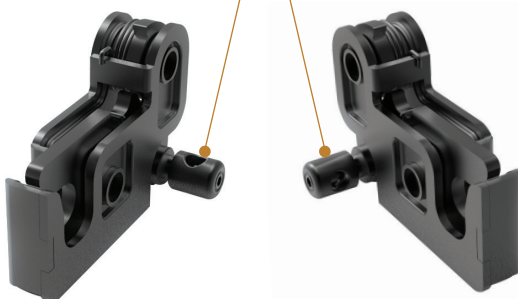
- Single stage
- To be used with a 3/8" diameter striker
- Rated to a max load of 750 lbs
- Does not meet FMVSS 206 Passenger Restraint standards
- This design features intuitive adapters, keeping the cables/rods in line with the actuator and close to the panel surface, which reduces the activation angle and trigger force.

**MATERIAL:** Steel

**FINISH:** Fluorocarbon latch pawls; Black E-coat



Cable/rod adapters with set screw



LNL-77-01750 (RH, shown)  
LNL-77-01751 (LH)

LNL-77-00751 (LH, shown)  
LNL-77-00750 (RH)

Joystick actuator



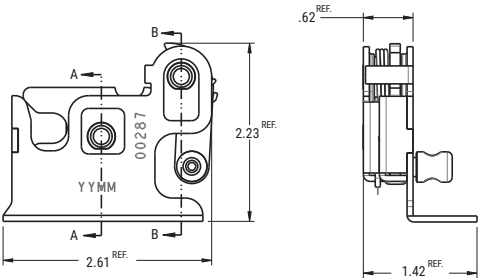
LNL-77-00046

# LOAD N LOCK MINI SERIES ROTARY LATCH

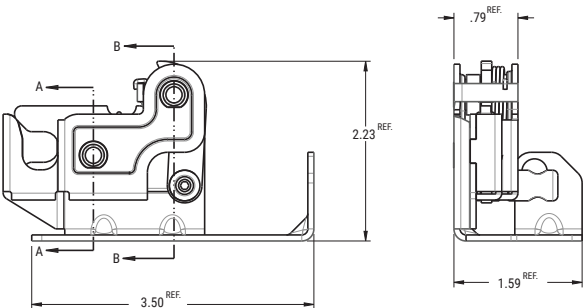
## SINGLE STAGE ROTARY LATCH



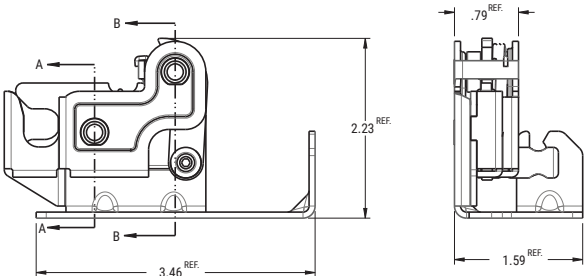
LNL-77-00287 (RH, shown)  
LNL-77-00289 (LH)



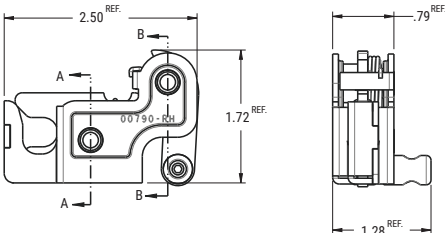
LNL-77-01944 (RH, shown)  
LNL-77-01945 (LH)



LNL-77-01955 (RH, shown)  
LNL-77-01956 (LH)



LNL-77-00790 (RH, shown)  
LNL-77-00791 (LH)



## LARGE ROTARY LATCHES



## LARGE SERIES ROTARY LATCH

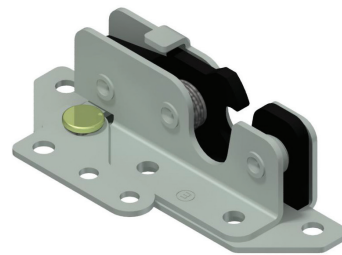
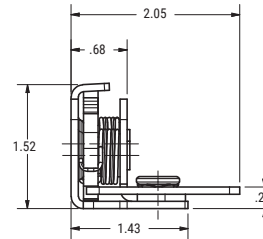
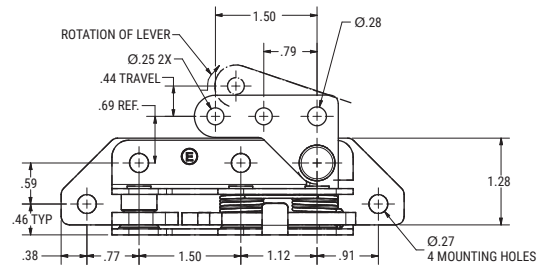
### DUAL STAGE ROTARY LATCH

PART #	HAND	MOUNTING	STRIKER SIZE
1-300-R-25	RH	Mounting bracket	.55"
1-300-L-25	LH	Mounting bracket	.55"
20X-17400-SSR-BG	RH	.32" thru holes	.55"
16898-SSBXL-23	LH	.33" thru holes	.55"

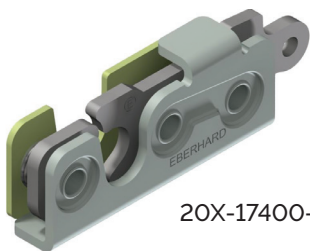
- Dual stage
- To be used with a .55" diameter striker
- Rated to a max load of 750 lbs
- Does not meet FMVSS 206 Passenger Restraint standards

**MATERIAL:** Steel; Stainless steel

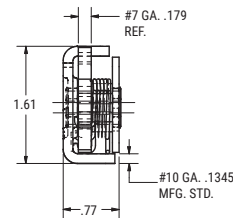
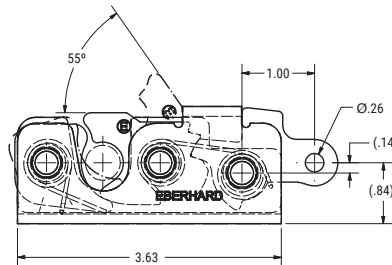
**FINISH:** Zinc plated with fluorocarbon latch pawls; Black E-coat



1-300-R-25



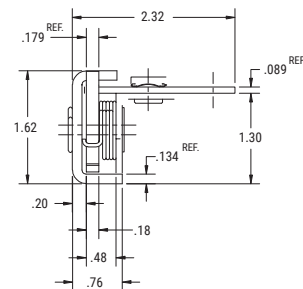
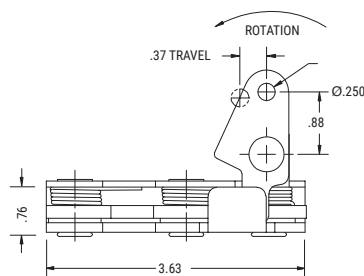
20X-17400-SSR-BG



STAINLESS STEEL TO HELP PREVENT CORROSION



16898-SSBXL-23



STAINLESS STEEL TO HELP PREVENT CORROSION

# FMVSS LARGE SERIES ROTARY LATCH

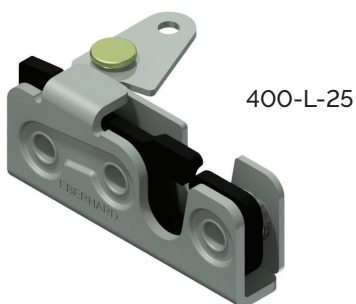
## DUAL STAGE ROTARY LATCH

PART #	HAND	LEVER ARM	MOUNTING	STRIKER SIZE
400-L-25	LH	Horizontal	.31" thru holes	.55"
1-400-L-25	LH	Two point	.31" thru holes	.55"
1-400-R-25	RH	Two point	.31" thru holes	.55"
24T-400-MR-24	RH	Two point	M8 x 1.25 threaded holes	.55"
42T-400-L-25	LH	Two point	1/4" x 20 threaded holes	.55"
42T-400-R-25	RH	Two point	1/4" x 20 threaded holes	.55"
9D-400-L-25	LH	Independent two point	.31" thru holes	.55"
9D-400-R-25	RH	Independent two point	.31" thru holes	.55"
2T-475-L-64	LH	Offset two point	1/4" x 20 threaded holes	.50"
2T-475-R-64	RH	Offset two point	1/4" x 20 threaded holes	.50"
44T-476-L-21	LH	Two point w/emergency release	1/4" x 20 threaded holes	.50"

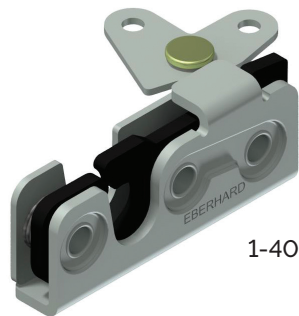
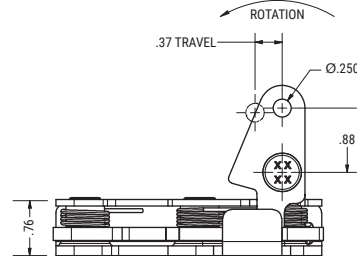
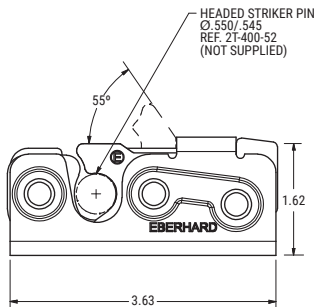
- Dual stage
- To be used with a .50" or .55" diameter striker
- Rated to a max load of 750 lbs
- Meets FMVSS 206 Passenger Restraint standards when used and tested with an Eberhard certified striker.

**MATERIAL:** Steel

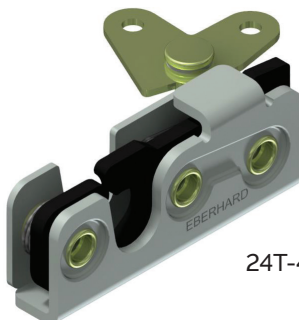
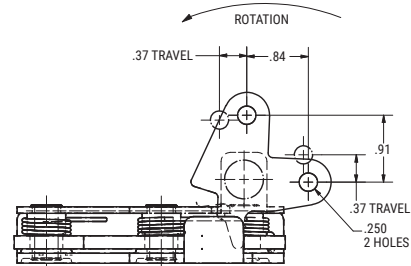
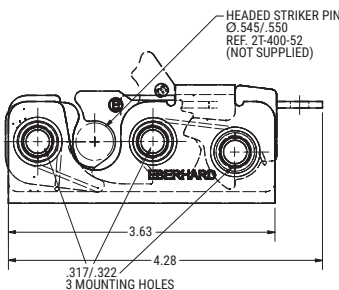
**FINISH:** Zinc plated with fluorocarbon latch pawls



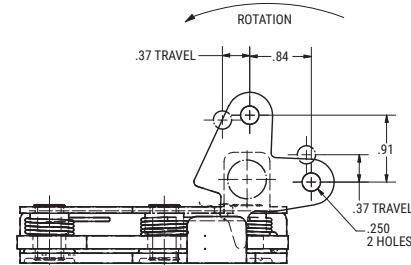
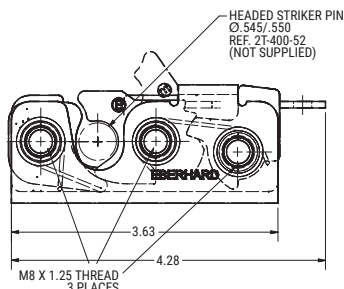
400-L-25



1-400-R-25

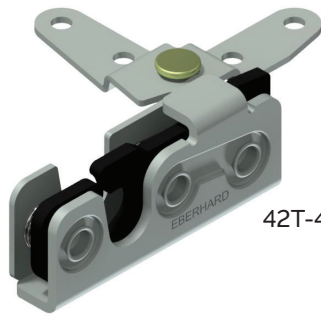


24T-400-MR-24

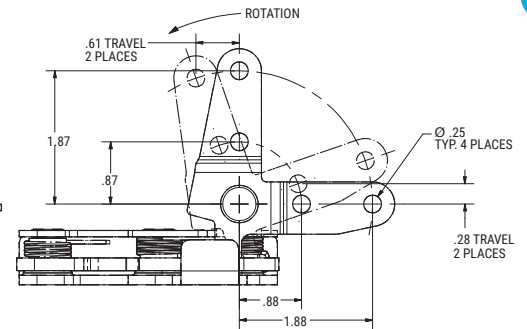
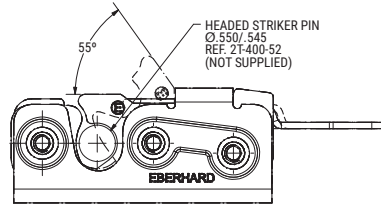


# FMVSS LARGE SERIES ROTARY LATCH

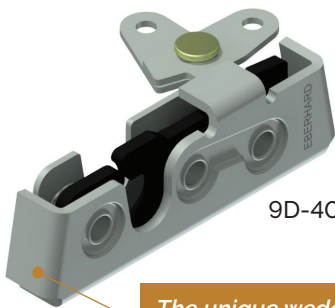
## DUAL STAGE ROTARY LATCH



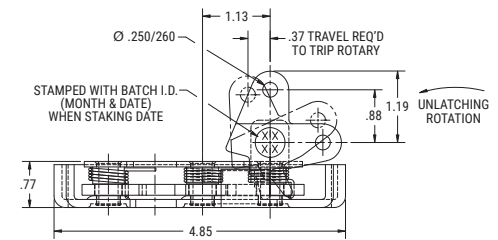
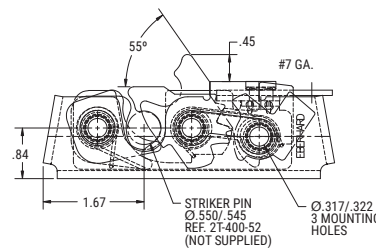
42T-400-R-25



DOVETAIL DESIGN TO BE USED WITH STRIKER BRACKET D-400-53-25 & .55" DIAMETER STRIKER. (see pg 31 for additional details)

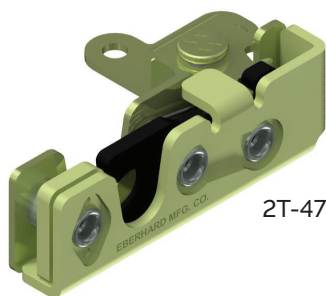


9D-400-R-25

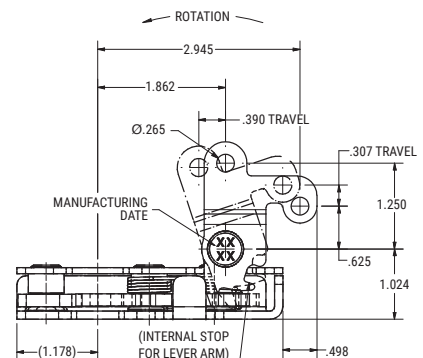
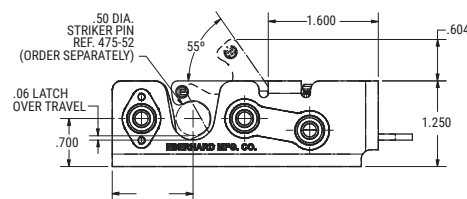


The unique wedge design improves door alignment when slammed closed. This dovetail reduces door sag and assures better latch engagement.

## LOW PROFILE DESIGN



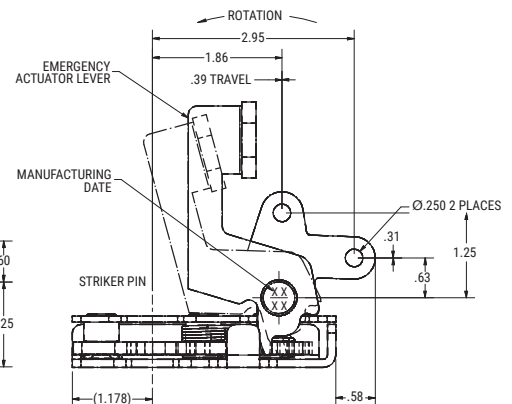
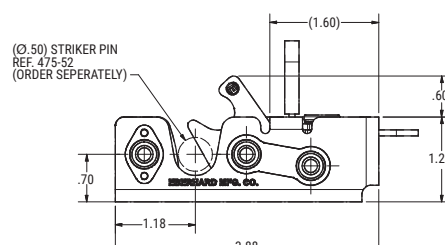
2T-475-R-64



## LOW PROFILE DESIGN



44T-476-L-21



EXTRA LARGE ROTARY LATCHES



## EXTRA LARGE SERIES ROTARY LATCH

### DUAL STAGE ROTARY LATCH

PART #	HAND	LEVER ARM	MOUNTING	STRIKER SIZE
16906-R-24	RH	Horizontal	3/8" thru holes	.55"
16906-L-24	LH	Horizontal	3/8" thru holes	.55"
19200-R-BG	RH	Multiple release	1/4" x 20 threaded holes	.48"
19200-L-BG	LH	Multiple release	1/4" x 20 threaded holes	.48"
19300-R-BG	RH	Dual release	1/4" thru holes	.48"
19300-L-BG	LH	Dual release	1/4" thru holes	.48"
1-19401-R-BG	RH	Multiple release	Mount w/19400 series rotary	n/a
1-19401-L-BG	LH	Multiple release	Mount w/19400 series rotary	n/a
19400-R-BG	RH	n/a	.33" thru holes	.62"
19400-L-BG	LH	n/a	.33" thru holes	.62"
19411-R-65	RH	2.3" extended arm	Mount w/19410 series rotary	n/a
19411-L-65	LH	2.3" extended arm	Mount w/19410 series rotary	n/a
19410-R-65	RH	n/a	.27" thru holes	.62"
19410-L-65	LH	n/a	.27" thru holes	.62"
19421-L-65	LH	Single	Mount w/19420 series rotary	n/a
19420-L-BG	LH	n/a	.29" thru holes	.62"

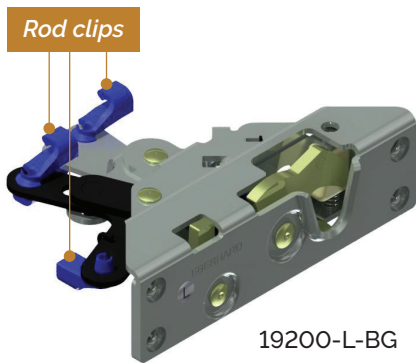
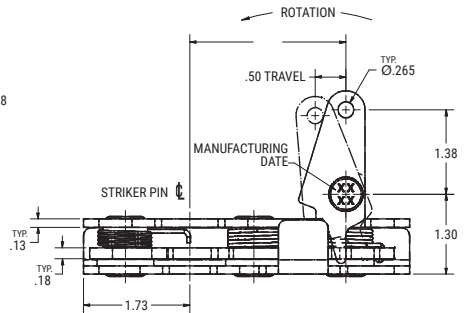
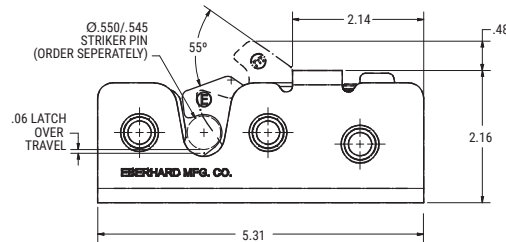
- Dual stage
- Rated to a max load of 750 lbs
- Meets FMVSS 206 Passenger Restraint standards (except 19411 & 19410) when used and tested with an Eberhard certified striker.

**MATERIAL:** Steel

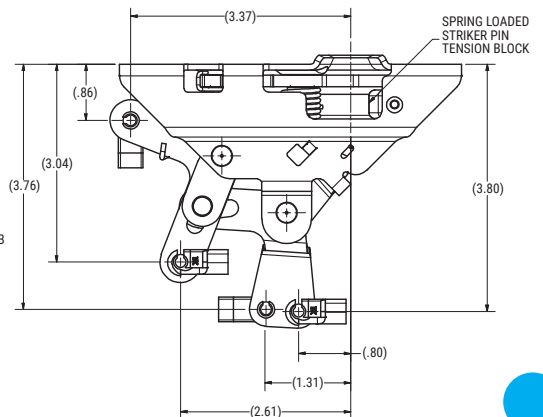
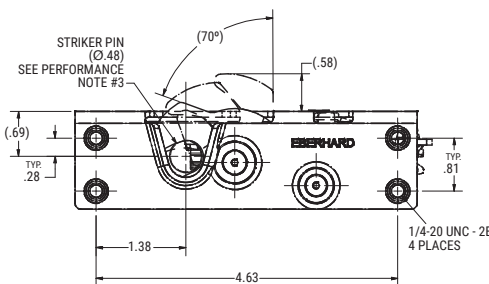
**FINISH:** Zinc plated with fluorocarbon latch pawls



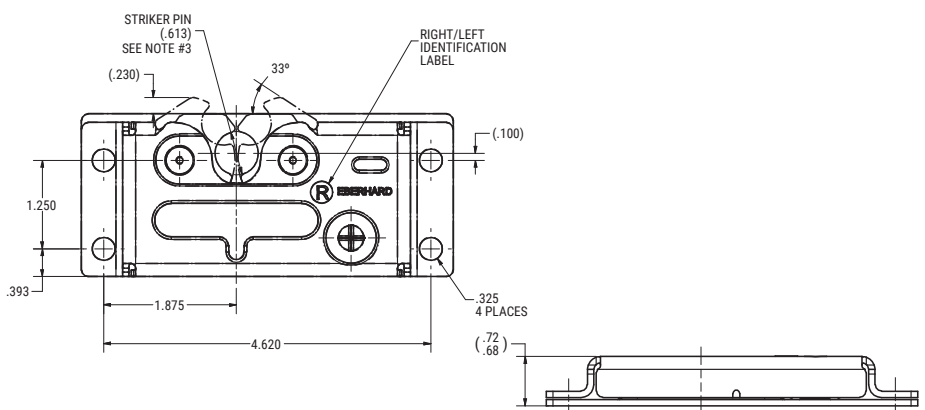
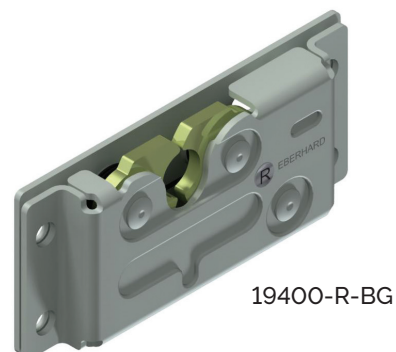
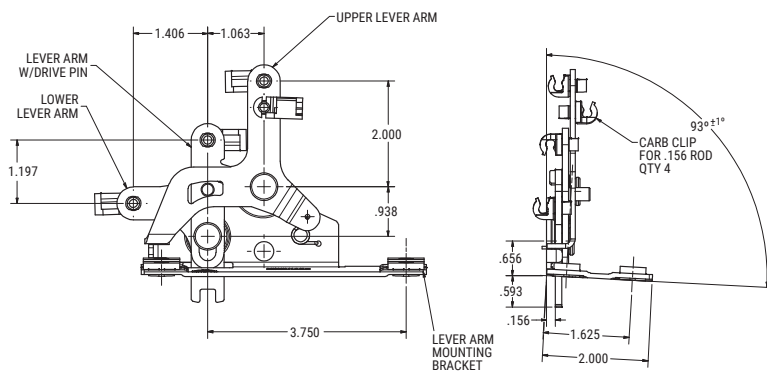
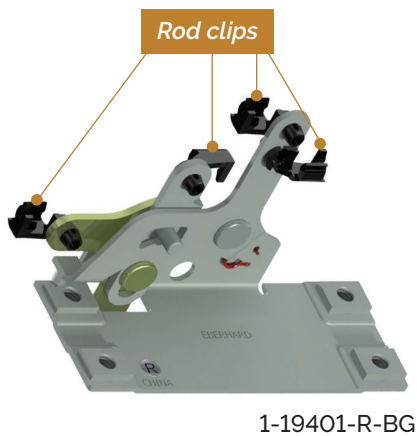
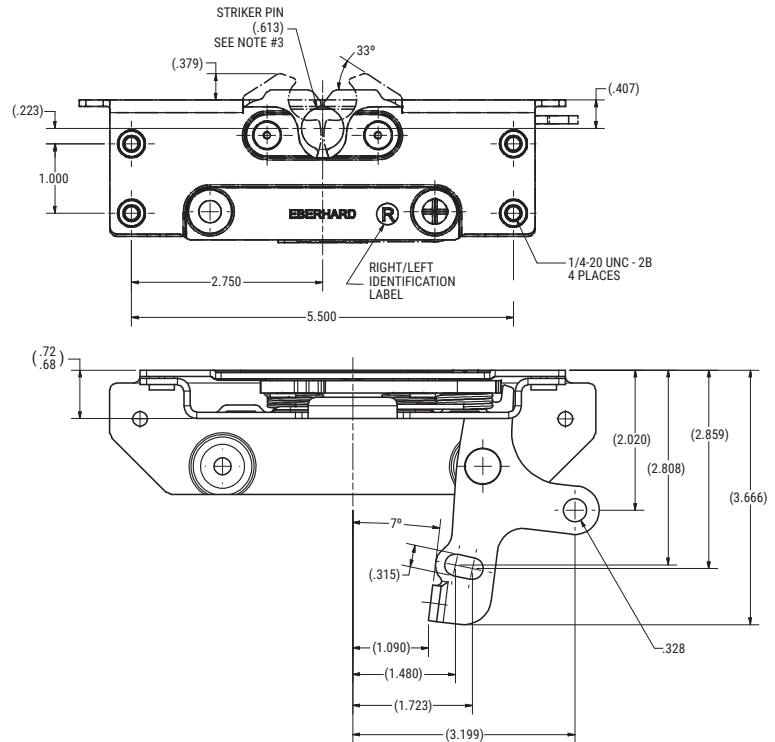
16906-R-24



19200-L-BG

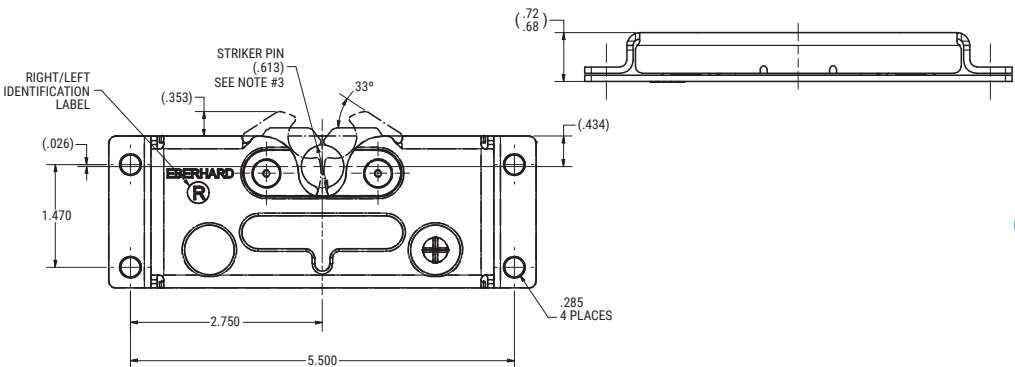
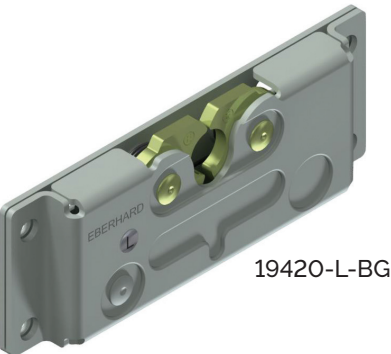
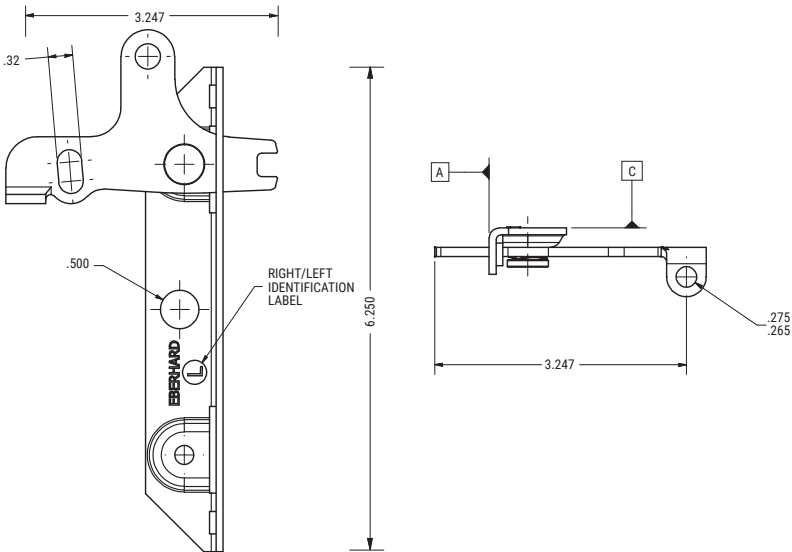
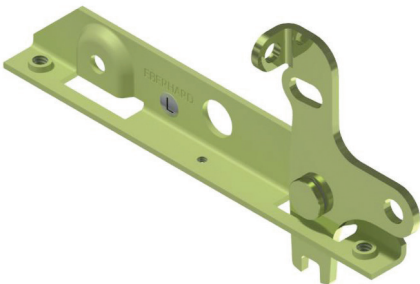
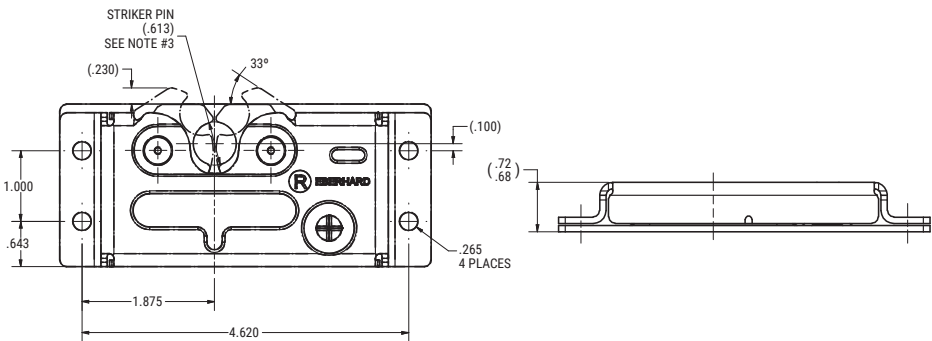
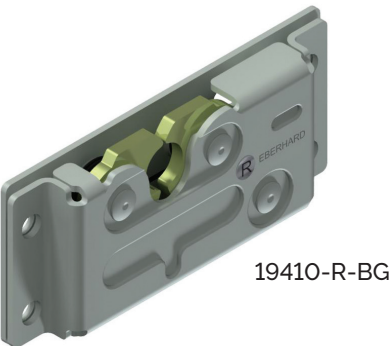
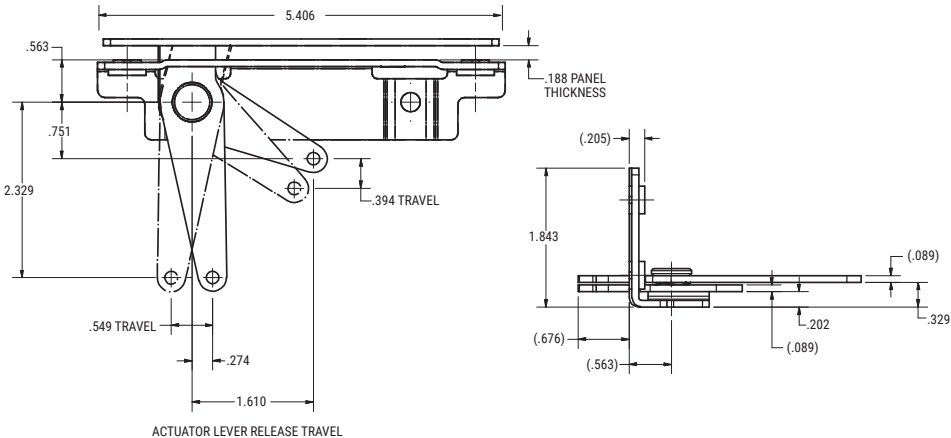
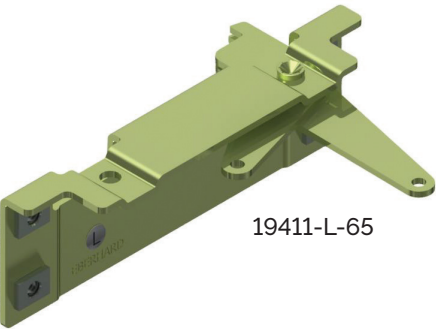


19300-R-BG



# EXTRA LARGE SERIES ROTARY LATCH

## DUAL STAGE ROTARY LATCH



## ELECTRONIC ROTARY LATCHES



## POWER UP SERIES ROTARY LATCH

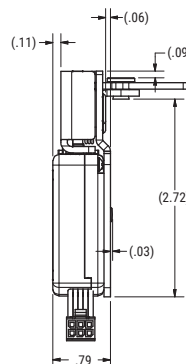
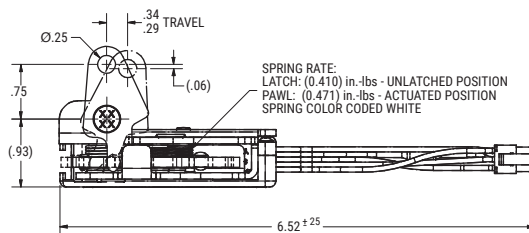
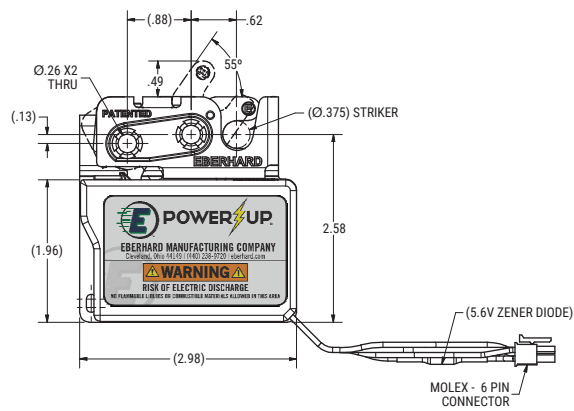
### SINGLE OR DUAL STAGE ELECTRONIC ROTARY LATCH

PART #	HAND	MOUNTING	STRIKER SIZE
CM1-16240-NTAL-BG	LH	1/4" thru holes	.38"

- To be used with a 3/8" diameter striker
- Operating current 12V DC
- ROHS compliant
- Operating temperature range of -40 degrees Celsius to +80 degrees Celsius.
- Internal micro switch can detect locked position, unlocked position, or locked and unlocked position.
- Single or dual stage
- Does not meet FMVSS 206 Passenger Restraint standards

**MATERIAL:** Steel

**FINISH:** Zinc plated with fluorocarbon latch pawls



## POWER UP/T-17241 SERIES ROTARY LATCH

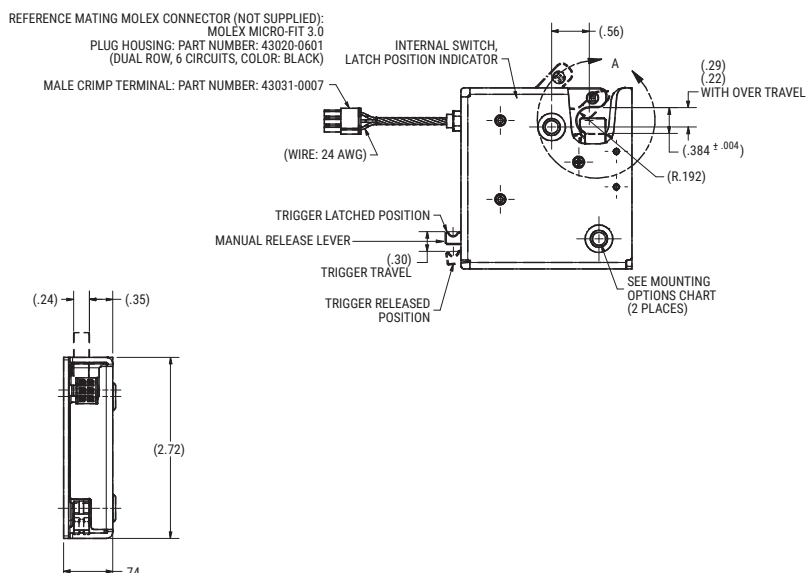
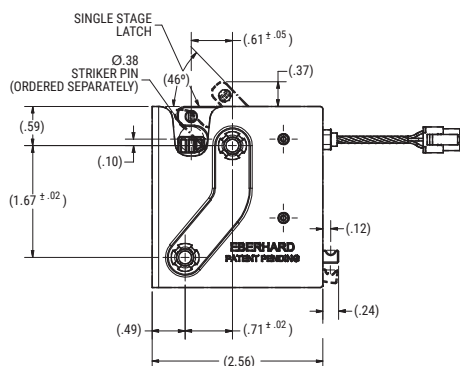
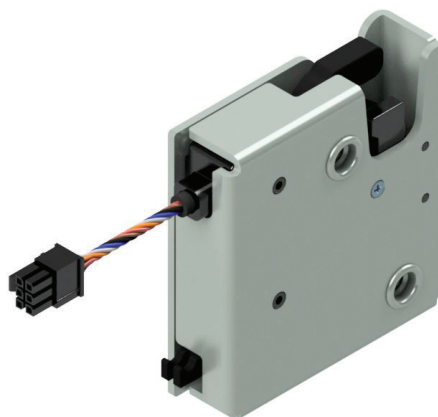
### SINGLE STAGE ELECTRONIC ROTARY LATCH

PART #	RELEASE TYPE	MANUAL TRIGGER	MOUNTING	STRIKER PLUNGER	FEEDBACK RELAY	CONNECTOR	STRIKER SIZE
T-17241-PSA-PR1-PK-BG	Power release	Side trigger	1/4" x 20 threaded holes	Yes	Yes	Yes	.38"
T-17241-PSB-PR1-PK-BG	Power release	Side trigger	M6 x 1 threaded holes	Yes	Yes	Yes	.38"
17241-PSC-PR1-PK-BG	Power release	Side trigger	1/4" thru holes	Yes	Yes	Yes	.38"
T-17241-PRA-PR1-PK-BG	Power release	Rear trigger	1/4" x 20 threaded holes	Yes	Yes	Yes	.38"
T-17241-PRB-PR1-PK-BG	Power release	Rear trigger	M6 x 1 threaded holes	Yes	Yes	Yes	.38"
17241-PRC-PR1-PK-BG	Power release	Rear trigger	1/4" thru holes	Yes	Yes	Yes	.38"

- Single stage
- To be used with a 3/8" diameter striker
- Works with the i-Lock remote Bluetooth system
- Operating current less than 250 mA at 12V DC
- ROHS and Reach compliant
- Operating temperature range of -20 degrees Celsius to +70 degrees Celsius.
- Internal spring plunger feature to help with releasing the striker pin from the assembly.
- Feedback relay that advises if latch is OPEN or CLOSED.
- Does not meet FMVSS 206 Passenger Restraint standards

**MATERIAL:** Steel

**FINISH:** Zinc plated with fluorocarbon latch pawls



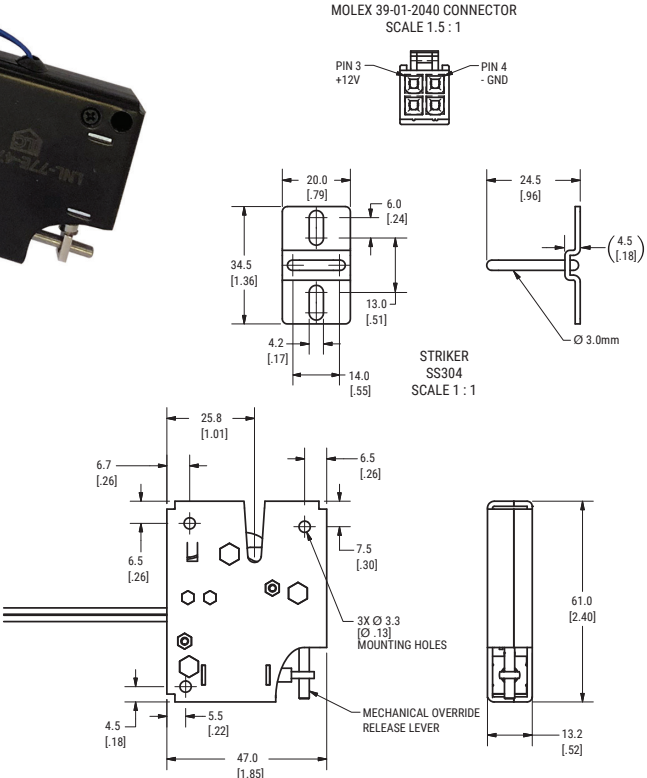
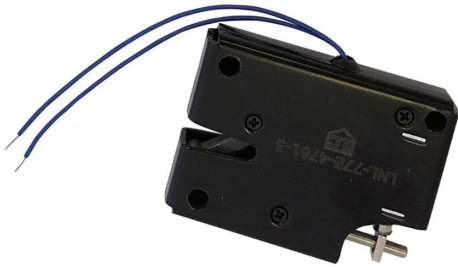
# LOAD N LOCK SERIES COMPACT ROTARY LATCH

## HIGH STRENGTH ELECTRONIC ROTARY LATCH

PART #	CONNECTOR
LNL-77E-4761-3	Yes
LNL-77E-4761-5	No

- Operating current 12V DC
- Ultimate tensile load 200 lbs
- Integrated mechanical release
- Versatile concealed latching
- High cycle life
- Operating temperature range of -20 degrees Celsius to +80 degrees Celsius.
- Striker included
- Does not meet FMVSS 206 Passenger Restraint standards

MATERIAL: Steel; Stainless steel striker  
FINISH: Black E-coat



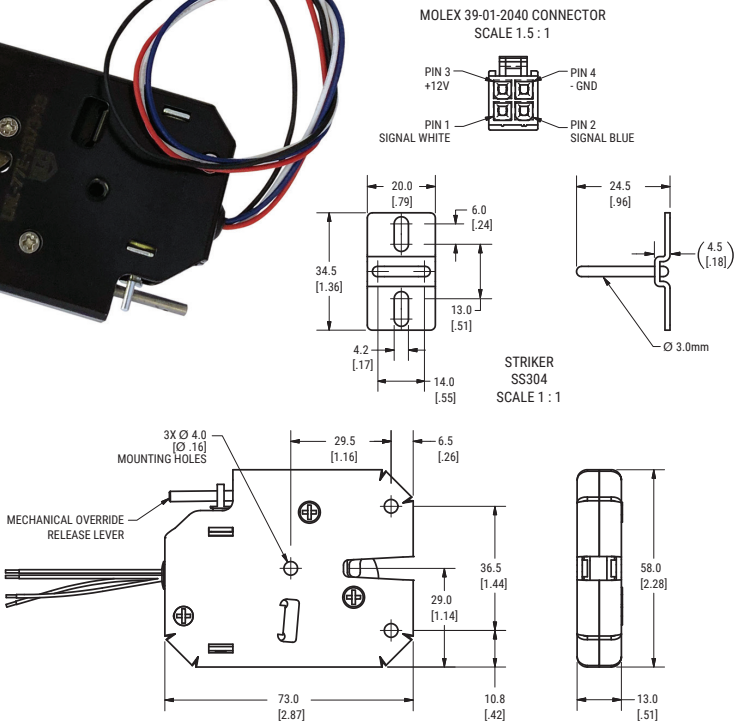
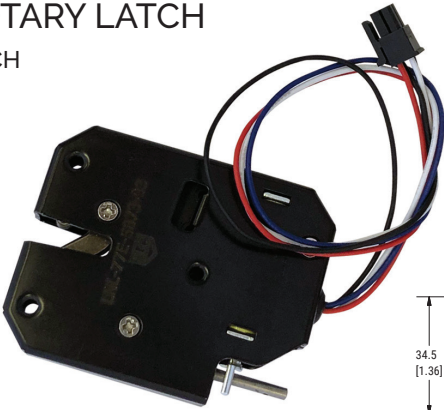
# LOAD N LOCK SERIES MEDIUM ROTARY LATCH

## HIGH PERFORMANCE ELECTRONIC ROTARY LATCH

PART #	SENSOR	CONNECTOR
LNL-77E-5873-73	No	Yes
LNL-77E-5873-75	No	No
LNL-77E-5873-93	Yes	Yes
LNL-77E-5873-95	Yes	No

- Operating current 12V DC
- Ultimate tensile load 500 lbs
- Sensor option detects closed position
- Integrated mechanical override
- High cycle life
- Operating temperature range of -20 degrees Celsius to +80 degrees Celsius.
- Striker included
- Does not meet FMVSS 206 Passenger Restraint standards

MATERIAL: Steel; Stainless steel striker  
FINISH: Black E-coat



# LOAD N LOCK SERIES LARGE ROTARY LATCH

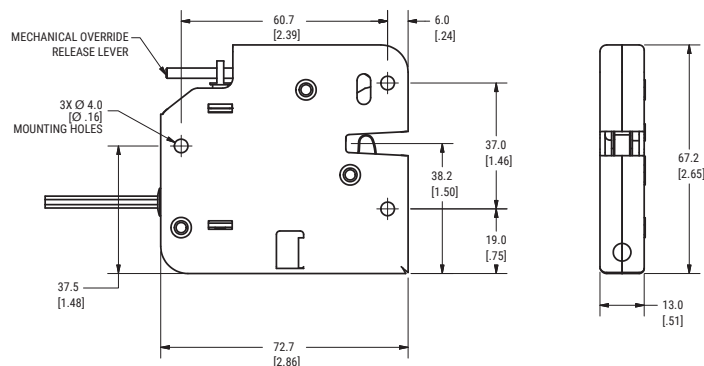
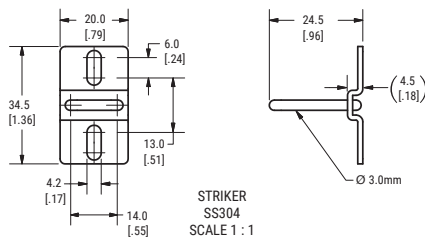
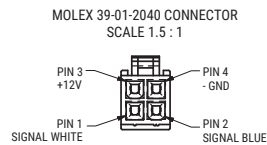
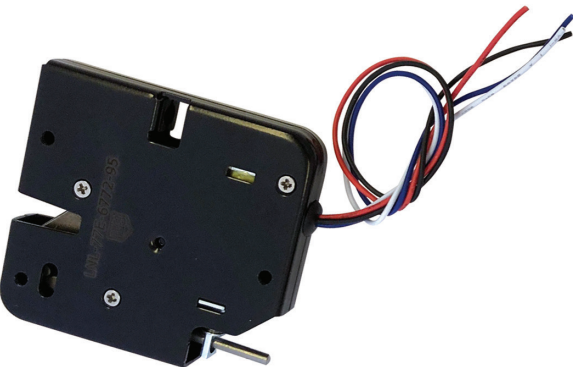
## HEAVY DUTY ELECTRONIC ROTARY LATCH

PART #	SENSOR	CONNECTOR
LNL-77E-6772-73	No	Yes
LNL-77E-6772-75	No	No
LNL-77E-6772-93	Yes	Yes
LNL-77E-6772-95	Yes	No

- Operating current 12V DC
- Ultimate tensile load 600 lbs
- Sensor option detects closed position
- Integrated mechanical override
- High cycle life
- Operating temperature range of -20 degrees Celsius to +80 degrees Celsius.
- Striker included
- Does not meet FMVSS 206 Passenger Restraint standards

MATERIAL: Steel; Stainless steel striker

FINISH: Black E-coat



## NON-FMVSS RATED STRIKERS



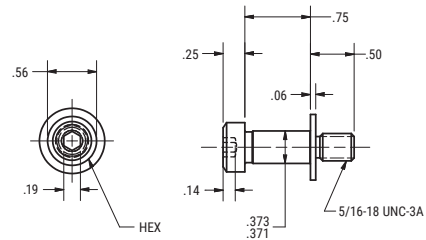
- Does not meet FMVSS 206 Passenger Restraint standards

**MATERIAL:** Steel

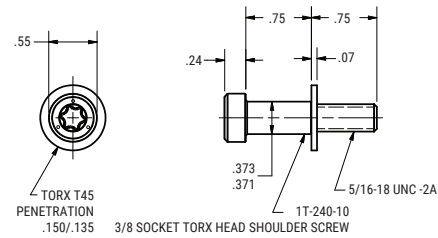
**FINISH:** Zinc plated; Black E-coat



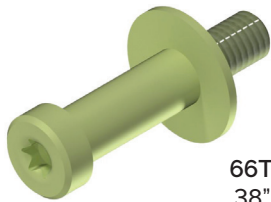
**240-52U-25**  
.38" diameter, hex drive striker pin  
& washer assembly.



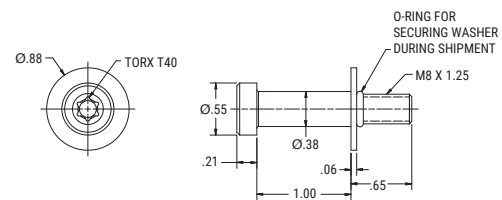
**1T-240-52U-64**  
.38" diameter, Torx® drive  
striker pin with washer.



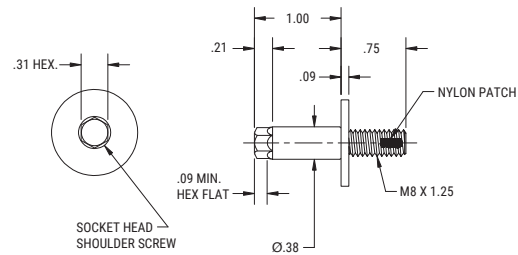
**1T-240-10-64**  
.38" diameter, Torx® drive  
striker pin without washer.



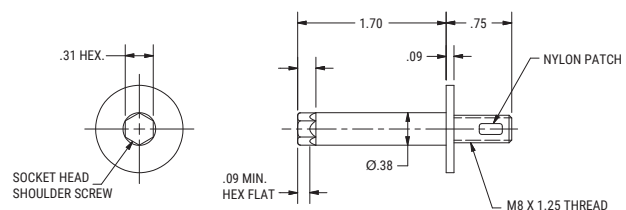
**66T-240-52M-64**  
.38" diameter, Torx® drive  
striker pin with washer & O-ring.



**63-240-52M-23**  
.38" diameter, socket head  
striker pin with washer & nylon patch.  
1" shaft length.

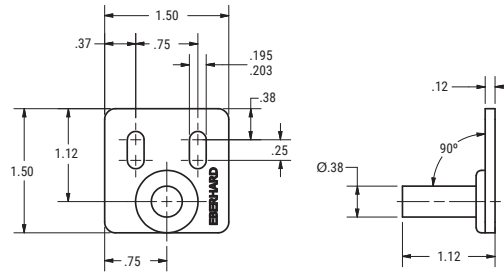


**65-240-52M-23**  
.38" diameter, socket head striker  
pin with washer & nylon patch.  
1.70" shaft length.

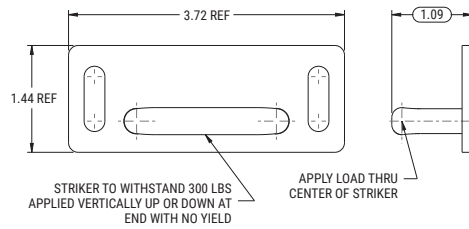




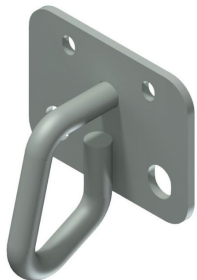
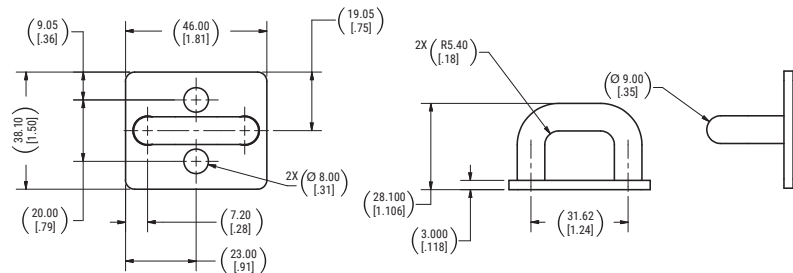
**16-240-52-25**  
 .38" diameter striker pin with  
 adjustable slotted mounting bracket.



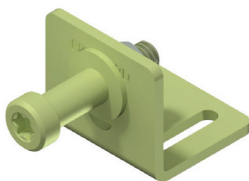
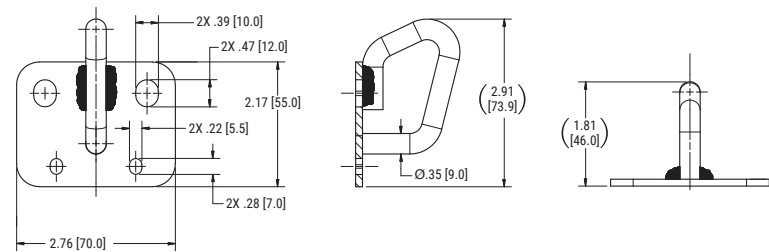
**LNL-77-00627**  
 .365" diameter striker pin &  
 mounting bracket assembly.



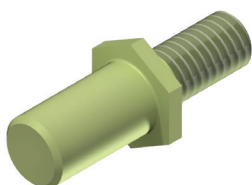
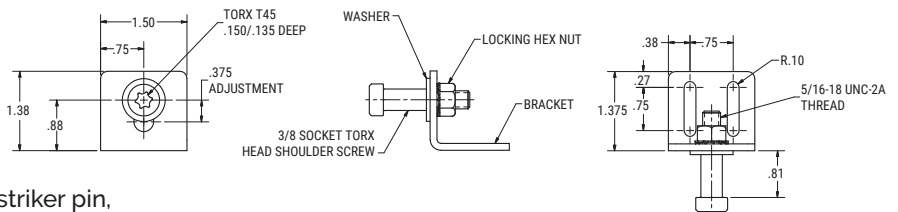
**4-16905-37-24**  
 .35" diameter striker &  
 mounting bracket assembly.  
 Two mounting holes.



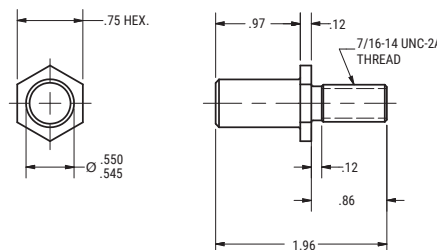
**3-16905-37-CZ**  
 .35" diameter striker &  
 mounting bracket assembly.  
 Four mounting holes.



**1-16645-PK-64**  
 Striker assembly with a  
 .38" diameter, Torx® drive striker pin,  
 .75" horizontal adjustment,  
 & .38" vertical adjustment.



**16642-10-64**  
 .55" diameter headless  
 striker pin with washer.



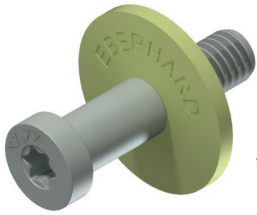
## FMVSS RATED STRIKERS



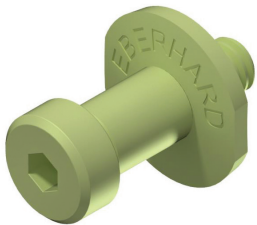
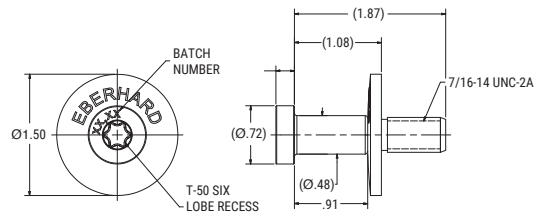
- Meets FMVSS 206 Passenger Restraint standards when used and tested with an Eberhard certified latch assembly.

**MATERIAL:** Steel

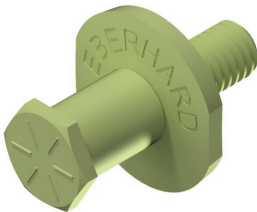
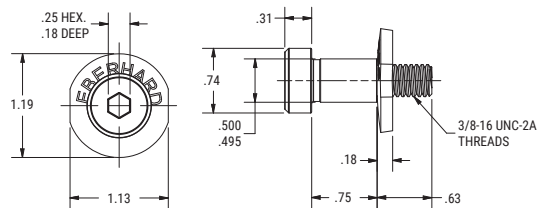
**FINISH:** Zinc plated



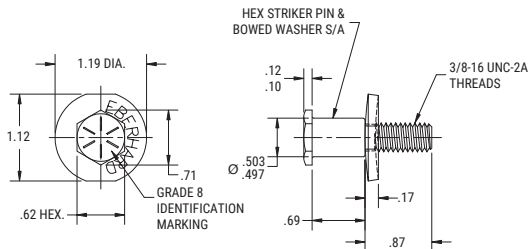
**T-19200-52-24**  
.48" diameter, six lobe headed  
striker pin & washer assembly.



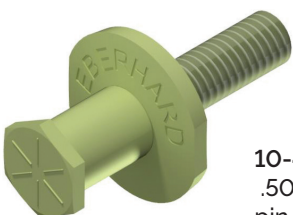
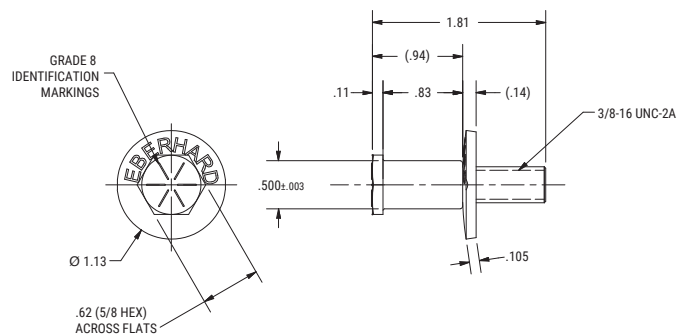
**475-52-64**  
.50" diameter, hex drive  
striker pin & washer assembly.



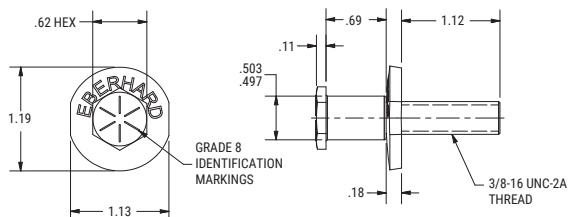
**3-475-52-64**  
.50" diameter, hex head striker pin  
& washer assembly. 1.67" long.



**13-475-52-24**  
.50" diameter, hex head striker  
pin & washer assembly. 1.81" long.

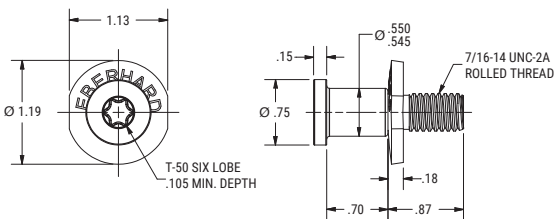


**10-475-52-64**  
.50" diameter, hex head striker  
pin assembly. 2.10" long.

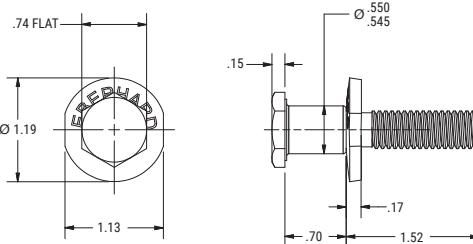




.50" diameter, welded striker  
assembly with mounting plate.



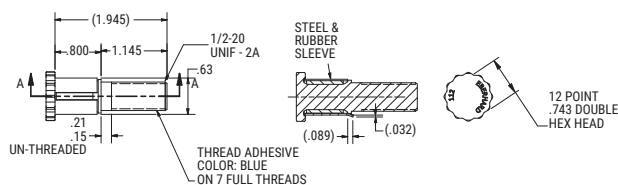
.55" diameter, six lobe headed  
striker pin & washer assembly.



.55" diameter, hex head  
striker pin & washer assembly.



.63" diameter, 12 point head,  
striker pin with sleeve.



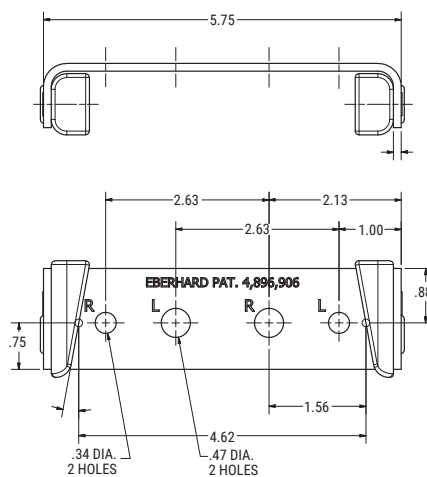
TO BE USED WITH ROTARY 9D-400-R/L-25 & .55" DIAMETER STRIKER.  
(SEE PAGE 16 FOR ROTARY & ABOVE FOR STRIKERS)



Dovetail striker bracket assembly.  
Designed to improve door alignment  
and assure better latch engagement.

*Striker supplied separately.  
Image for reference only.*

- Mounting holes marked "R" to be used with right hand rotary.
- Mounting holes marked "L" to be used with left hand rotary.
- .47" diameter hole is also locator for striker pin. (To be used with a .55" diameter striker to meet FMVSS standards)



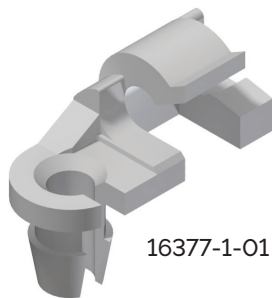
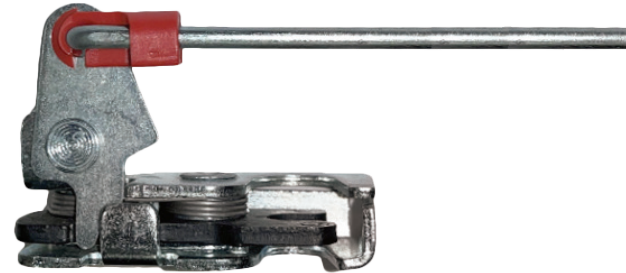
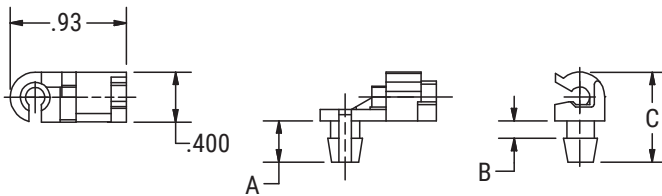
## ACCESSORIES



## ROD CLIPS

### 16377 SERIES

PART #	HAND	COLOR	A	B	C
16377-1	RH	White/Natural	.33"	.14"	.71"
16377-2	LH	Black	.33"	.14"	.71"
16377-3	RH	Red	.28"	.08"	.66"
16377-4	LH	Green	.28"	.08"	.66"



16377-1-01



16377-2-01

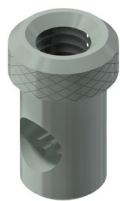


16377-3-01

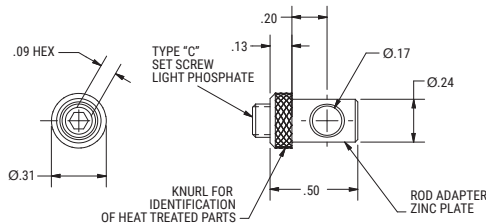


16377-4-01

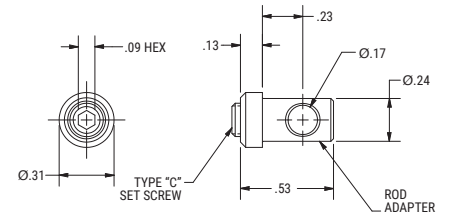
## ROD/CABLE ADAPTERS



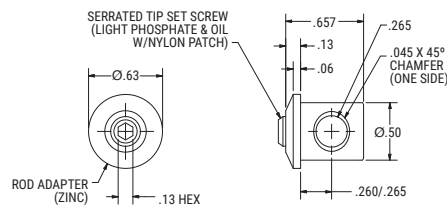
16619-15PK-25



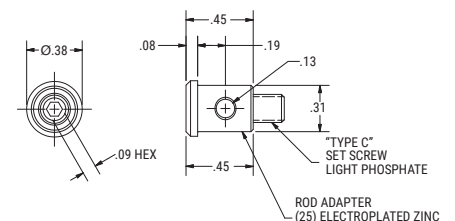
1-16619-15PK-27



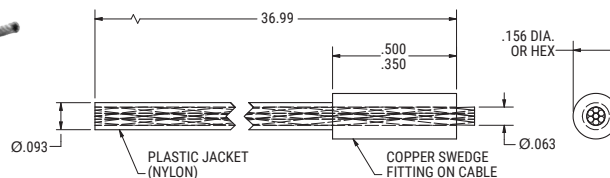
16619-25PK-25



17009-12PK-25



565698-5-01



## CONVERSION CHARTS

FRACTION	INCHES	MM
1/32	.0312	0.79
1/16	.0625	1.58
3/32	.0937	2.38
1/8	.1250	3.17
5/32	.1562	3.97
3/16	.1875	4.76
7/32	.2187	5.55
1/4	.25	6.35
9/32	.2812	7.14
5/16	.3125	7.93
11/32	.3437	8.73
3/8	.3750	9.52
13/32	.4062	10.31
7/16	.4375	11.11
15/32	.4687	11.90
1/2	.5	12.70

FRACTION	INCHES	MM
17/32	.5312	13.49
9/16	.5625	14.28
19/32	.5937	15.08
5/8	.6250	15.87
21/32	.6562	16.66
11/16	.6875	17.46
23/32	.7187	18.25
3/4	.75	19.05
25/32	.7812	19.84
13/16	.8125	20.63
27/32	.8437	21.43
7/8	.8750	22.22
29/32	.9062	23.01
15/16	.9375	23.81
31/32	.9687	24.60
1	1.00	25.40

Equivalents:  
 1 in = 2.54 cm  
 1 cm = .3937 in

TO CONVERT	INTO	MULTIPLY BY	TO CONVERT	INTO	MULTIPLY BY
FEET	INCHES	12	METERS	INCHES	39.37
FEET	MILLIMETERS	304.8	METERS	FEET	3.281
FEET	METERS	0.3048	MILLIMETERS	METERS	0.001
FOOT-POUNDS	NEWTON-METERS	1.356	MILLIMETERS	INCHES	0.03937
INCHES	MILLIMETERS	25.4	MILLIMETERS	FEET	0.003281
INCHES	METERS	0.0254	NEWTONS	KILOGRAMS (FORCE)	0.102
INCHES	FEET	0.08333	NEWTONS	POUNDS (FORCE)	0.2248
INCH-POUNDS	NEWTON-METERS	0.113	NEWTON-METERS	INCH-POUNDS	8.851
KILOGRAMS (FORCE)	NEWTONS	9.807	NEWTON-METERS	FOOT-POUNDS	0.7376
KILOGRAMS (MASS)	POUNDS (MASS)	2.205	POUNDS (MASS)	KILOGRAMS (MASS)	0.4536
METERS	MILLIMETERS	1000	POUNDS (FORCE)	NEWTONS	4.448

## FINISH CODES

CODE	FINISH	CODE	FINISH	CODE	FINISH
64	Zinc with yellow converter	23	E-coat (electrocoat)	24	Electroplated zinc
36	Electroplated zinc, black	54	Fluorocarbon	25	Electroplated zinc
BG	Bearing grease	22	Passivated stainless steel	21	Plastisol finish

## TERMS & CONDITIONS

**Pricing.** Prices and specifications are subject to change without notice and are valid only on the day the order is placed. Eberhard Website prices, e-mail offers and other advertisements are subject to correction. Published prices do not include shipping, sales tax and insurance. Proof of purchase and postage may be required for rebates.

**Shipment.** Delivery dates are estimates only and are based on manufacturer inventory and normal shipping conditions (shipping conditions and actual ship dates may vary). Shipping and handling charges will be added to the price of any products and/or services purchased by Internet Purchase Order via the Eberhard Website. Eberhard reserves the right to make partial shipments until a purchase order is shipped complete. Eberhard will notify you if products and/or services have been discontinued and/or are no longer available, and such products and/or services will be cancelled from pending purchase orders with a credit for any paid, but unshipped products and/or services.

**Risk of Loss.** All products and/or services purchased from the Eberhard Website are made pursuant to a shipment contract. This means that the risk of loss and title for such items pass to you upon Eberhard's delivery to the carrier, at Eberhard's shipping point. Eberhard will not be responsible for goods lost in transit. Purchaser is solely responsible for filing claims with the carrier for losses. Claims for shortages in shipment not chargeable to the carrier must be reported within ten (10) days from receipt of merchandise.

**Eberhard Products and Services.** Eberhard reserves the right to modify and/or discontinue products and/or services, at any time, and at Eberhard's sole discretion.

**Return Policy.** If you are not satisfied with your purchase and you return products within thirty (30) days of receipt, you may exchange the product or receive a refund or credit, according to this Return Policy, provided the returned products are in the same condition as the date shipped ("as new" condition), and returned in the original box and packaging, along with a copy of the Internet Purchase Order, shipping documents, proof of delivery, and any warranty cards. No Eberhard product or part can be returned for credit unless written authorization has been given in advance. Merchandise returned must be identified as to the original date of purchase, purchase order number, and shipper's name and address. Service and handling charge is 15% of net billing price, except in the case of defective parts. Any freight paid by Illinois Lock will be deducted from the amount of credit issued, except in the case of defective parts. Merchandise returned in unsaleable condition will not be acceptable. The return of obsolete, discontinued, modified or special parts is not permissible. Eberhard reserves the right to charge for all work completed or materials purchased when an order is canceled or reduced prior to shipment, where special or modified parts are involved. Eberhard reserves the right to assess an additional cancellation charge, other than the normal 15% handling charge, in the event the quantity canceled is in excess of our normal stock requirements. Prices are subject to change in the event purchaser receives original order quantity.

**Limited Warranty.** Eberhard strives to produce quality products at reasonable prices. If you are not satisfied with our product because of a defect, we will repair or replace the defective part or parts free of charge for a period of one year from the date of purchase. In the event you claim that the product contains a defect, simply notify Eberhard of the defect, and we will arrange for repair or replacement. The sole and exclusive remedy against Eberhard relating in any way to a product defect shall be the repair or replacement of defective parts as provided for under this LIMITED WARRANTY. No other remedy, including, but not limited to, incidental or consequential loss, is available. This LIMITED WARRANTY shall not be deemed to have failed of its essential purpose so long as Eberhard is willing and able to repair or replace defective parts in the manner prescribed in this LIMITED WARRANTY. Any action for breach relating to the sale of an Eberhard product must be commenced within one year after the cause of action has accrued. This LIMITED WARRANTY IS IN LIEU OF ANY OTHER WARRANTY, EXPRESS OR IMPLIED, AND ALL SUCH WARRANTIES ARE EXCLUDED, INCLUDING, BUT NOT LIMITED TO, ANY IMPLIED WARRANTY OF MERCHANTABILITY OR FITNESS FOR A PARTICULAR PURPOSE.

### INTERESTED IN LEARNING MORE?

Schedule a solution seminar with our expert staff.  
Email [sales@eberhard.com](mailto:sales@eberhard.com) for more information.



**EBERHARD®**  
[ ENGINEERED : ACCESS : SOLUTIONS ]

ROTARY LATCH CATALOG 2022

21944 Drake Road | Strongsville, OH 44149-9712 | 440-238-9720 | [eberhard.com](http://eberhard.com) | [sales@eberhard.com](mailto:sales@eberhard.com) | 10.22