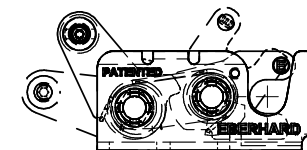
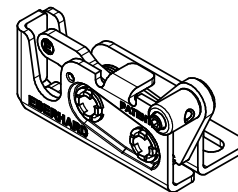
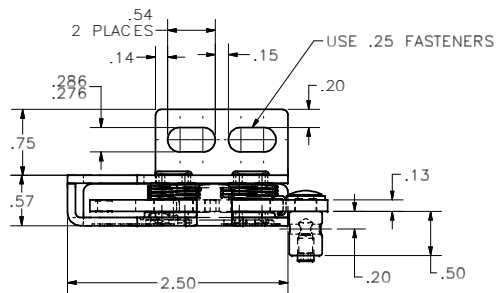
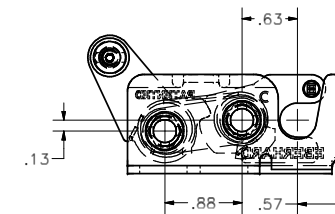
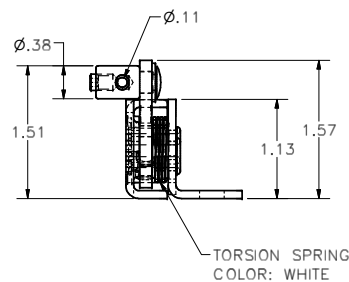
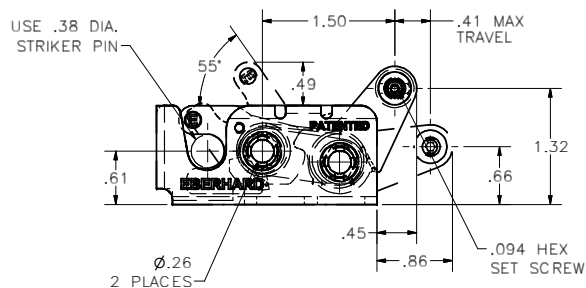


**CONFIDENTIAL NOTICE:** This drawing and the designs, specifications and engineering information disclosed hereon are the property of Eberhard Manufacturing Company and are not to be disseminated or reproduced without express written consent. The drawing is loaned in confidence and then only for consideration of the matter disclosed hereon. In accepting loan of this drawing, recipient agrees to keep it and the matter disclosed hereon in confidence and not to use nor permit their use in any way detrimental to Eberhard Manufacturing Company, Division of the Eastern Company, 21844 Drake Road, Cleveland, Ohio 44149-9712. © 2012 EBERHARD MFG. CO.

REVISION HISTORY			
REV	DESCRIPTION	EN	DATE
	REVISED, REDRAWN AND CONVERTED TO 3D	5674	10-9-12



18X-231-AL  
LEFT HAND  
MINI-ROTARY LOCK



- NOTES:  
1. FINISHES:  
A. E-COAT WITH EVERLUBE INTERNAL COMPONENTS, FC (23)  
B. EVERLUBE INTERNAL COMPONENTS, FC (54)  
C. BEARING GREASE WITH EVERLUBE INTERNAL COMPONENTS, FC (BG)  
2. SPRING RATE:  
LATCH: .410 lbs.\*in. - UNLATCHED POSITION.  
PAWL: .471 lbs.\*in. - ACTUATED POSITION.

**WARNING**  
THIS PRODUCT MUST NOT BE USED FOR PERSONAL RESTRAINT APPLICATIONS

MINI-ROTARY IS A TRADEMARK OF EBERHARD MFG. CO., DIVISION OF THE EASTERN COMPANY.

SUPERSEDES DRAWING 18X-231-A RL SH1 DATED 10-26-99.

PATENTED

THIS DOCUMENT IS IN ACCORDANCE WITH ASME Y14.15-2009		DATE	10-9-2012
UNLESS OTHERWISE SPECIFIED TOLERANCES ARE AS FOLLOWS:	DRYBY	NAME	SINGLE STAGE MINI-ROTARY LOCK W/CABLE ADAPTER AND LIGHT TORSION SPRING
ANGLES: 1/8" 1/16"	FLP	MATERIAL	-----
2 PLACE DEC.: ±.03 ±.06	SCALE	CHECKBY	18X-231-AR/L
3 PLACE DEC.: ±.015 ±.03	FULL		
ALL HOLES: ±.005 ±.13			

EBERHARD MANUFACTURING CO. DIVISION OF THE EASTERN COMPANY CLEVELAND, OHIO 44149-9712	
PART NUMBER	18X-231-AR/L

CUSTOMER PRINT  
SHEET 1 OF 3  
RIGHT HAND SHOWN  
LEFT HAND OPPOSITE