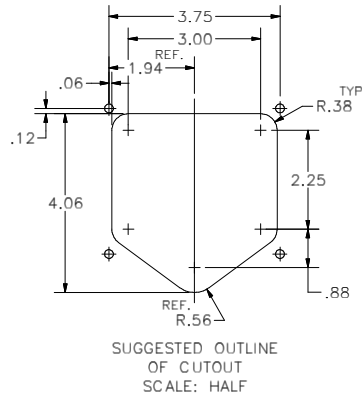
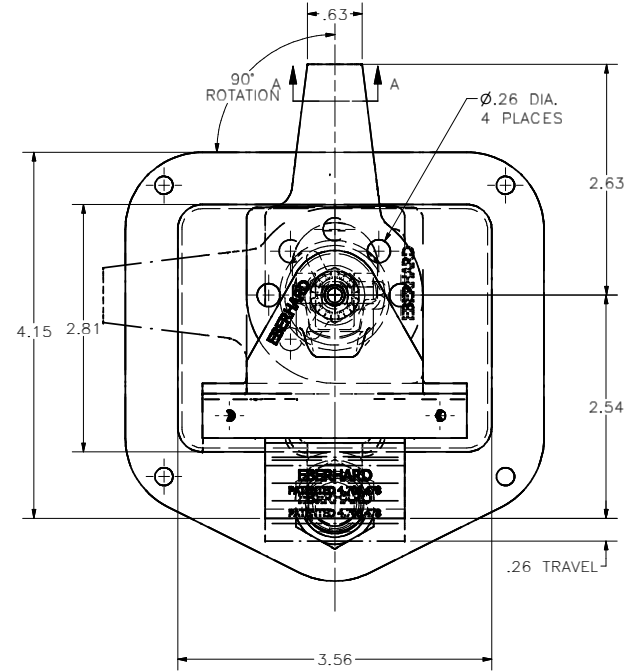
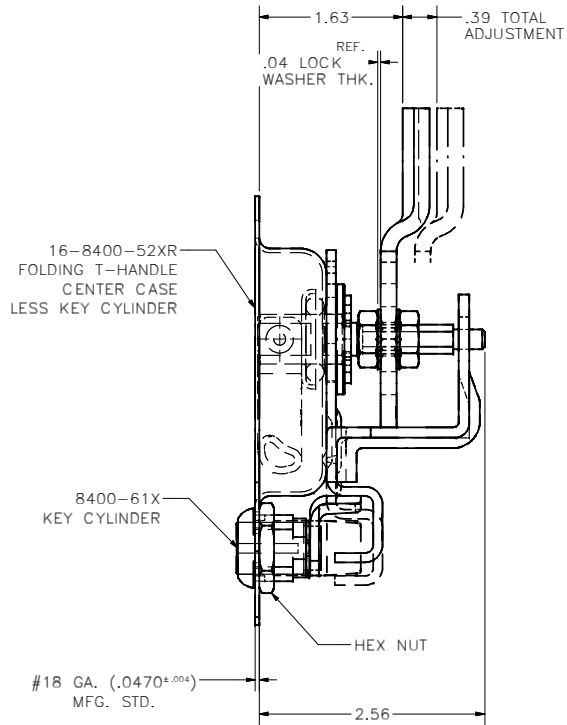
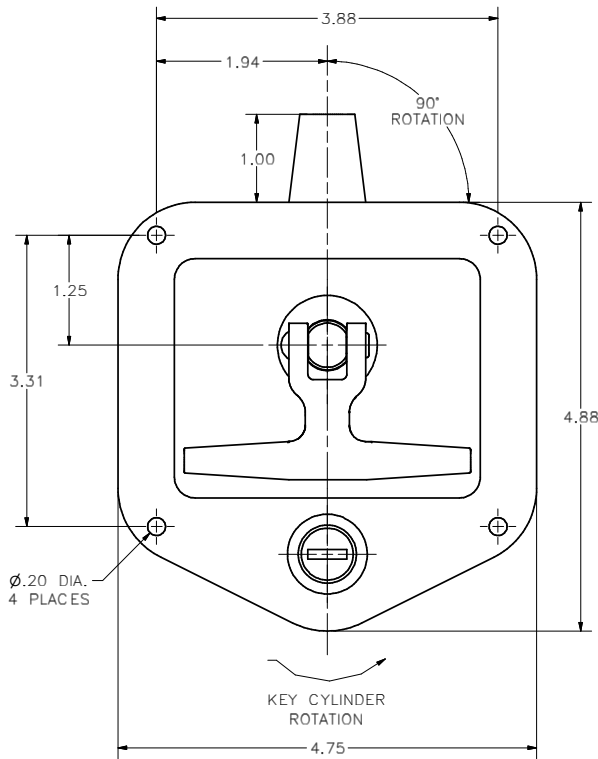


CONFIDENTIAL NOTICE: This drawing and the designs, specifications and engineering information disclosed herein are the property of Eberhard Manufacturing Company and are not to be disseminated or reproduced without express written consent. The drawing is loaned in confidence and then only for consideration of the matter disclosed herein. In accepting loan of this drawing, recipient agrees to keep it and the matter disclosed herein in confidence and not to use nor permit their use in any way detrimental to Eberhard Manufacturing Company, Division of the Eastern Company, 21044 Drake Road, Cleveland, Ohio 44149-9712. © 2011 EBERHARD MFG. CO.

REVISION HISTORY			
REV.	DESCRIPTION	EN	DATE
1	REVISED & REDRAWN, CONVERTED TO 3D	EN 9519	9-2-2011



NOTE:
 OPTIONAL GASKET AVAILABLE
 ORDER P/N: 16553
 MATERIAL: EPDM CLOSED CELL SPONGE
 THICKNESS: .19
 COLOR: BLACK

RIGHT HAND SHOWN
 LEFT HAND OPPOSITE

SUPERSEDES DRAWING 16-8400-R/L DATED 6-27-08.

UNLESS OTHERWISE SPECIFIED TOLERANCES ARE AS FOLLOWS:		DATE 9-2-2011	NAME KEY LOCKING SINGLE POINT RECESSED FOLDING T-HANDLE W/ADJUSTABLE LATCH AND WATER RESISTANT FEATURE
ANGLES: # 2	2 PLACE DEC.: # .03	CHK BY MJH	MATERIAL -----
3 PLACE DEC.: # .015	ALL HOLES: # .005	SCALE 1:1	PART NUMBER 16-8400-R/L
		CHK BY	

EBERHARD MANUFACTURING CO.
 DIVISION OF
 THE EASTERN COMPANY
 CLEVELAND, OHIO 44149-9712

C:\Working_Folder\Archive\Pro8\8400\16-8400 R.L.dwg